

RECOMMENDED P.C.B. LAYOUT (T=1.6mm/2.0mm/2.4mm)

NOTES:

1. MATERIAL:

HOUSING: THERMAL PLASTIC, UL94V-0, COLOR: SEE SHEET2  
 TERMINAL/PEG: COPPER ALLOY, THICKNESS=0.25MM

2. TERMINAL PLATING:

- CONTACT AREA: (a) GOLD FLASH
- (b) 0.76 MICRON GOLD PLATED
- (c) 0.38 MICRON GOLD PLATED

SOLDER TAIL:

1.27 MICRON MIN. MATTE TIN PLATED

UNDER PLATE:

1.27 MICRON MIN. NICKEL PLATED

3. PEG PLATING:

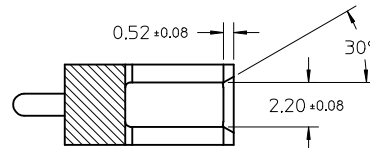
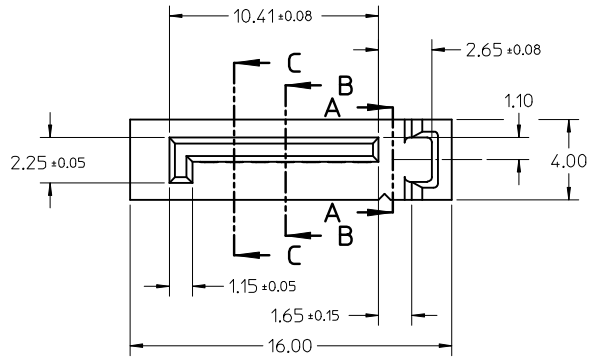
- 1.27 MICRON MIN. MATTE TIN PLATED OVERALL
- 1.27 MICRON MIN. NICKEL UNDER PLATED

4. PACKAGING SPECIFICATION REFER TO PK-67491-001

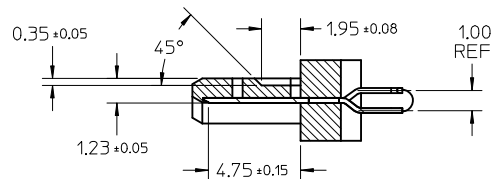
5. PRODUCT SPECIFICATION REFER TO PS-67491-001

6. MATING PART: 67489

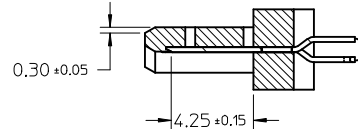
7. RECOMMENDED PROCESS: WAVE SOLDERING



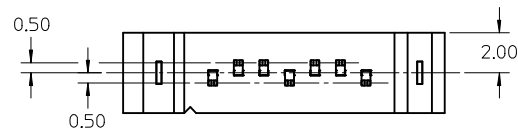
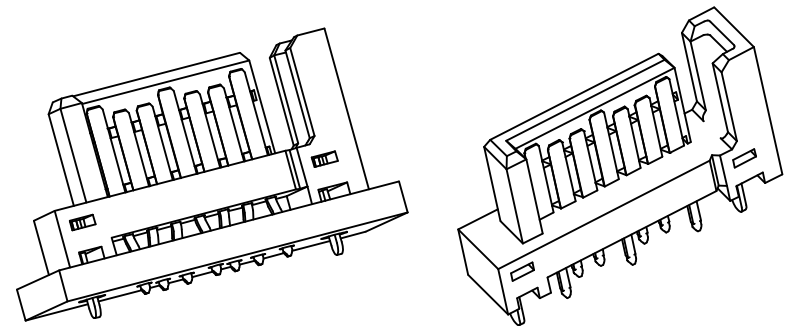
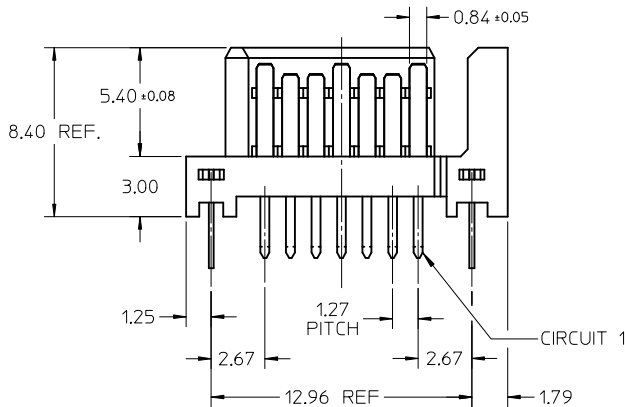
SECTION A-A



SECTION B-B



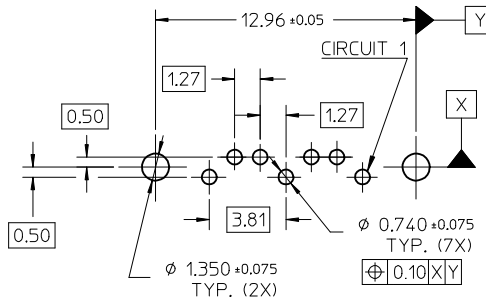
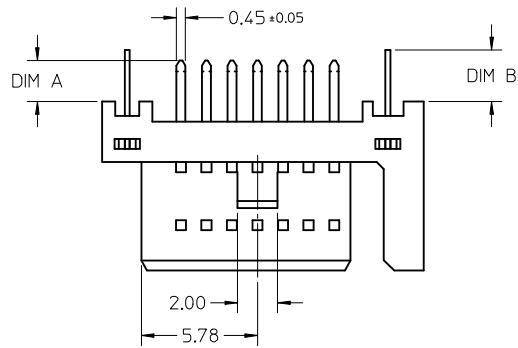
SECTION C-C



SEE SHEET 2 EC NO: S2017-0539 DRW:DBFAN 2017/04/12 CHKD:JKACHLIC 2017/04/12 APPR:JKACHLIC 2017/04/12	QUALITY SYMBOLS $F_A=0$ $F_B=0$ $F_C=0$	GENERAL TOLERANCES (UNLESS SPECIFIED)		DIMENSION STYLE MM ONLY		SCALE 4:1	DESIGN UNITS METRIC	THIRD ANGLE PROJECTION	
			mm	INCH	DRAWN BY GRATE MA	DATE 2004/02/02	TITLE 1.27MM HIGH SPEED PLUG VERTICAL TYPE		
		4 PLACES	± ---	± ---	CHECKED BY YA JUN	DATE 2004/02/02			
		3 PLACES	± ---	± ---	APPROVED BY RZHANG	DATE 2010/11/03	MOLEX INCORPORATED DOCUMENT NO. SD-67491-001		
2 PLACES	± 0.15	± ---	MATERIAL NO.		SHEET NO. 1 OF 2				
1 PLACE	± 0.25	± ---	DRAFT WHERE APPLICABLE MUST REMAIN WITHIN DIMENSIONS		THIS DRAWING CONTAINS INFORMATION THAT IS PROPRIETARY TO MOLEX INCORPORATED AND SHOULD NOT BE USED WITHOUT WRITTEN PERMISSION				

	10	9	8	7	6	5	4	3	2	1
	P/N	PLATING TYPE	DIM 'A'	DIM 'B'	COLOR	SOLDE AREA PLATING				
F	67491-0020	SEE NOTE 2(a)	2.05	2.57	BLACK	PURE TIN MATTE FINISH				
	67491-0021	SEE NOTE 2(b)								
	67491-0022	SEE NOTE 2(c)								
	67491-0025	SEE NOTE 2(a)	2.35							
	67491-2020	SEE NOTE 2(a)	2.05	2.57	BLUE, PANTONE NO. 293C ΔE<3					
	67491-2021	SEE NOTE 2(b)								
E	67491-2025	SEE NOTE 2(a)	2.35							
	67491-2027	SEE NOTE 2(c)								
	67491-3010	SEE NOTE 2(a)	3.00	3.20	BLACK					
	67491-3011	SEE NOTE 2(b)								
	67491-3012	SEE NOTE 2(c)								
	67491-3110	SEE NOTE 2(a)	3.00	3.20	BLUE, PANTONE NO. 293C ΔE<3					

ADD DIM 'B' AT F8 EC NO: S2017-0539 DRW:DBFAN 2017/04/12 CHKD:JKACHLIC 2017/04/12 APPR:JKACHLIC 2017/04/12	QUALITY SYMBOLS   	GENERAL TOLERANCES (UNLESS SPECIFIED)		DIMENSION STYLE MM ONLY		SCALE 4:1	DESIGN UNITS METRIC	THIRD ANGLE PROJECTION		
			mm	INCH	DRAWN BY	DATE	TITLE 1.27MM HIGH SPEED PLUG VERTICAL TYPE			
		4 PLACES	± ---	± ---	GRATE MA	2004/02/02				
		3 PLACES	± ---	± ---	CHECKED BY	DATE	MOLEX INCORPORATED			
2 PLACES	± 0.15	± ---	YA JUN	2004/02/02						
1 PLACE	± 0.25	± ---	APPROVED BY	DATE	DOCUMENT NO.		SHEET NO. 2 OF 2			
ANGULAR ± 3 °		RZHANG		2010/11/03	SD-67491-001					
DRAFT WHERE APPLICABLE MUST REMAIN WITHIN DIMENSIONS			MATERIAL NO. SEE CHART		THIS DRAWING CONTAINS INFORMATION THAT IS PROPRIETARY TO MOLEX INCORPORATED AND SHOULD NOT BE USED WITHOUT WRITTEN PERMISSION					



RECOMMENDED P.C.B. LAYOUT (T=1.6mm/2.0mm/2.4mm)

NOTES:

1. MATERIAL:

HOUSING: THERMAL PLASTIC, UL94V-0, COLOR: SEE SHEET2  
 TERMINAL/PEG: COPPER ALLOY, THICKNESS=0.25MM

2. TERMINAL PLATING:

CONTACT AREA: (a) GOLD FLASH  
 (b) 0.76 MICRON GOLD PLATED  
 (c) 0.38 MICRON GOLD PLATED

SOLDER TAIL:

1.27 MICRON MIN. MATTE TIN PLATED

UNDER PLATE:

1.27 MICRON MIN. NICKEL PLATED

3. PEG PLATING:

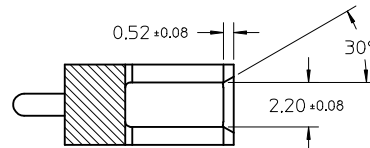
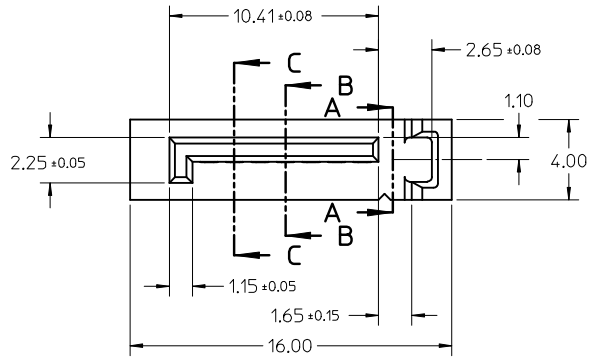
1.27 MICRON MIN. MATTE TIN PLATED OVERALL  
 1.27 MICRON MIN. NICKEL UNDER PLATED

4. PACKAGING SPECIFICATION REFER TO PK-67491-001

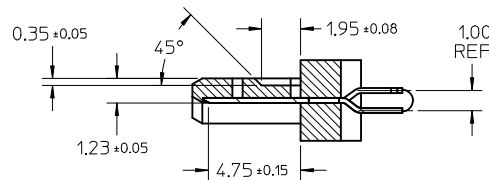
5. PRODUCT SPECIFICATION REFER TO PS-67491-001

6. MATING PART: 67489

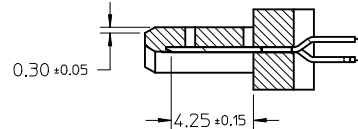
7. RECOMMENDED PROCESS: WAVE SOLDERING



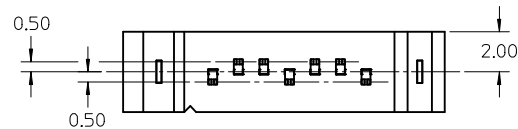
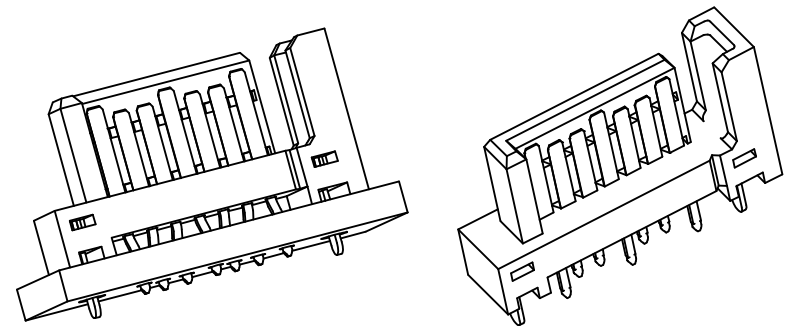
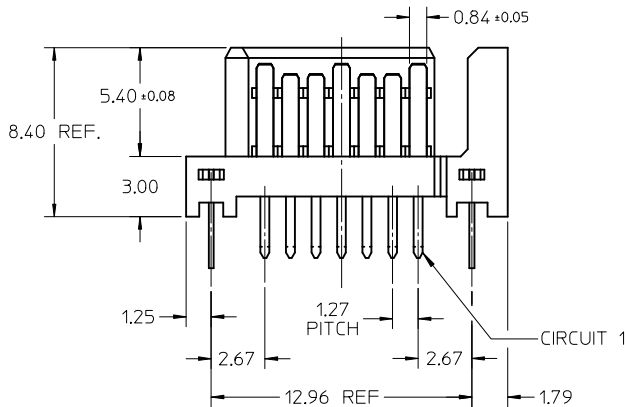
SECTION A-A



SECTION B-B

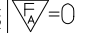
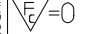
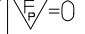


SECTION C-C



SEE SHEET 2 EC NO: S2017-0539 DRW:DBFAN 2017/04/12 CHKD:JKACHLIC 2017/04/12 APPR:JKACHLIC 2017/04/12	QUALITY SYMBOLS $F_{\Delta} = 0$ $F_{\square} = 0$ $F_{\nabla} = 0$	GENERAL TOLERANCES (UNLESS SPECIFIED)		DIMENSION STYLE MM ONLY		SCALE 4:1	DESIGN UNITS METRIC	THIRD ANGLE PROJECTION	
			mm	INCH	DRAWN BY	DATE	TITLE 1.27MM HIGH SPEED PLUG VERTICAL TYPE		
		4 PLACES	± ---	± ---	GRATE MA	2004/02/02			
			mm	INCH	CHECKED BY	DATE	MOLEX INCORPORATED DOCUMENT NO. SD-67491-001		
3 PLACES	± ---	± ---	YA JUN	2004/02/02					
	mm	INCH	APPROVED BY	DATE	SHEET NO. 1 OF 2				
2 PLACES	± 0.15	± ---	RZHANG	2010/11/03					
	mm	INCH	MATERIAL NO.	DATE	THIS DRAWING CONTAINS INFORMATION THAT IS PROPRIETARY TO MOLEX INCORPORATED AND SHOULD NOT BE USED WITHOUT WRITTEN PERMISSION				
1 PLACE	± 0.25	± ---	SEE SHEET 2						
DRAFT WHERE APPLICABLE MUST REMAIN WITHIN DIMENSIONS		ANGULAR ± 3°		SIZE A3					

	10	9	8	7	6	5	4	3	2	1
	P/N	PLATING TYPE	DIM 'A'	DIM 'B'	COLOR	SOLDE AREA PLATING				
F	67491-0020	SEE NOTE 2(a)	2.05	2.57	BLACK	PURE TIN MATTE FINISH				
	67491-0021	SEE NOTE 2(b)								
	67491-0022	SEE NOTE 2(c)								
	67491-0025	SEE NOTE 2(a)	2.35							
	67491-2020	SEE NOTE 2(a)	2.05	2.57	BLUE, PANTONE NO. 293C ΔE<3					
	67491-2021	SEE NOTE 2(b)								
E	67491-2025	SEE NOTE 2(a)	2.35							
	67491-2027	SEE NOTE 2(c)								
	67491-3010	SEE NOTE 2(a)	3.00	3.20	BLACK					
	67491-3011	SEE NOTE 2(b)								
	67491-3012	SEE NOTE 2(c)								
	67491-3110	SEE NOTE 2(a)	3.00	3.20	BLUE, PANTONE NO. 293C ΔE<3					

ADD DIM 'B' AT F8 EC NO: S2017-0539 DRW:DBFAN 2017/04/12 CHKD:JKACHLIC 2017/04/12 APPR:JKACHLIC 2017/04/12	QUALITY SYMBOLS  F=0  E=0  B=0	GENERAL TOLERANCES (UNLESS SPECIFIED)		DIMENSION STYLE MM ONLY		SCALE 4:1	DESIGN UNITS METRIC	THIRD ANGLE PROJECTION		
			mm	INCH	DRAWN BY GRATE MA	DATE 2004/02/02	TITLE 1.27MM HIGH SPEED PLUG VERTICAL TYPE			
		4 PLACES	± ---	± ---	CHECKED BY YA JUN	DATE 2004/02/02				
		3 PLACES	± ---	± ---	APPROVED BY RZHANG	DATE 2010/11/03	MOLEX INCORPORATED			
2 PLACES	± 0.15	± ---	MATERIAL NO.	DOCUMENT NO.	SD-67491-001					
1 PLACE	± 0.25	± ---	DRAFT WHERE APPLICABLE MUST REMAIN WITHIN DIMENSIONS		SEE CHART		THIS DRAWING CONTAINS INFORMATION THAT IS PROPRIETARY TO MOLEX INCORPORATED AND SHOULD NOT BE USED WITHOUT WRITTEN PERMISSION			
ANGULAR ± 3 °										