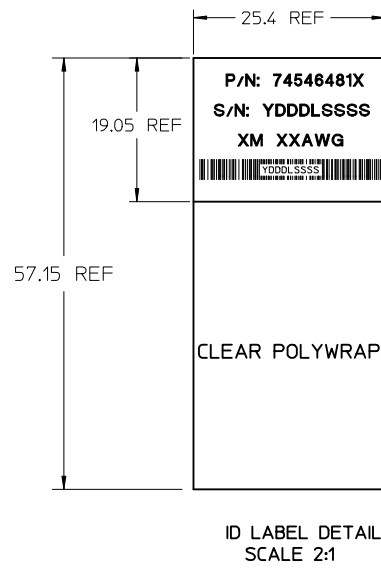
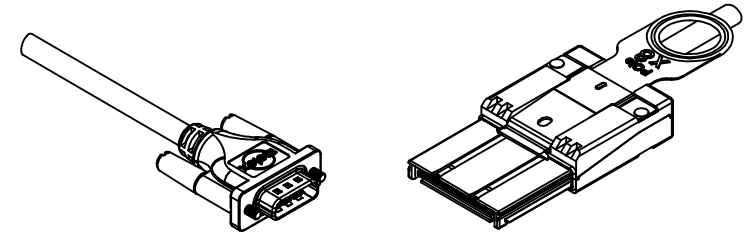
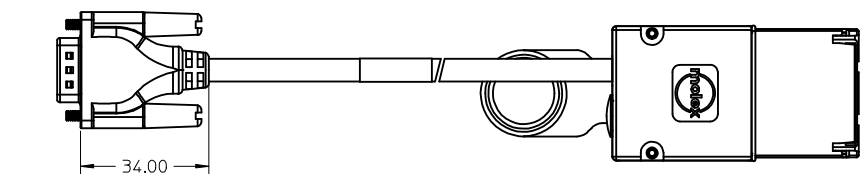
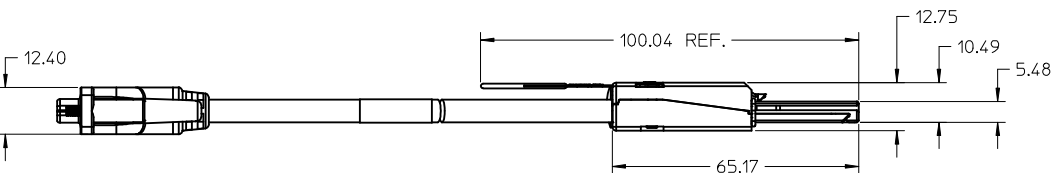


1X ID LABEL, 1 REQUIRED TEXT RIGHT SIDE UP SEE LABEL DETAIL

8X



LABEL TO CONTAIN THE FOLLOWING INFORMATION:  
 YDDLSSSS  
 Y = LAST DIGIT OF YEAR  
 DDD = DAY OF THE YEAR  
 L = LOCATION (1 = HPC, 2 = GUAD, 3 = DG)  
 SSSS = SERIAL NUMBER

MOLEX P/N	LENGTH	AWG	TOLERANCE
745464810	0.5M	28	0.025M
745464811	1M	28	0.025M
745464812	2M	28	0.025M
745464813	3M	28	0.025M
745464814	4M	26	0.05M
745464815	5M	26	0.05M
745464816	6M	24	0.08M
745464817	7M	24	0.08M

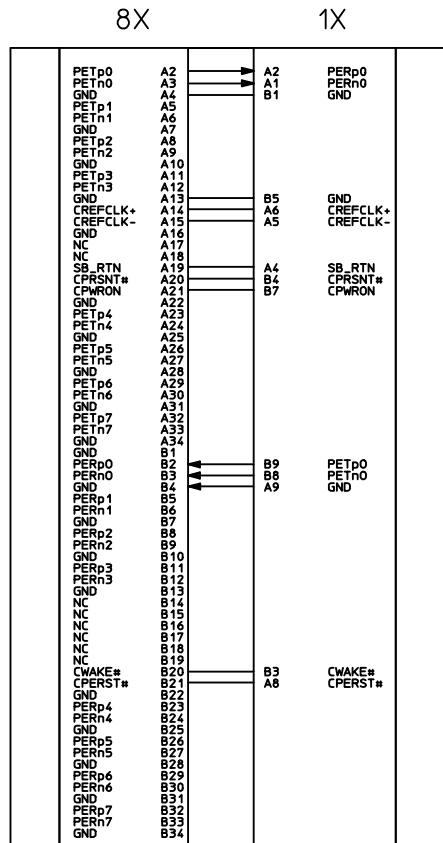
- NOTES:
- MATERIAL= BACKSHELLS - ZINC DIECAST  
PULL - DUPONT ZYTEL ST801 NYLON 6/6
  - LENGTH AND TOLERANCE - SEE TABLE
  - ELECTRICAL PERFORMANCE PER PCI EXPRESS EXTERNAL CABLING SPEC.
  - PLUG MATES TO RECEPTACLE 755860002, AND EMI GUIDE HOUSING ASSY. 745400100
  - LEAD FREE, NO ROHS EXEMPTIONS.
  - NOT COMPLIANT WITH INSERTION LOSS SPEC PER PCIe EXTERNAL CABLING SPECIFICATION.

<b>BAR CODE ON LABEL</b> EC NO: CPG2015-3293 DRWIN:CHIRSCHY 2014/08/14 CHKD:JMARTINEZ 2014/12/18 APPR:CHIRSCHY 2014/12/18	QUALITY SYMBOLS 	GENERAL TOLERANCES (UNLESS SPECIFIED)		DIMENSION STYLE <b>MM ONLY</b>		SCALE <b>1:1</b>	DESIGN UNITS <b>METRIC</b>	THIRD ANGLE PROJECTION	
		4 PLACES ± --- ± --- 3 PLACES ± --- ± --- 2 PLACES ± 0.13 ± --- 1 PLACE ± 0.25 ± --- 0 PLACE ± --- ± ---	mm INCH DRAWN BY DATE JERWIN 2008/01/28 CHECKED BY DATE BSCHOESTER 2008/01/28 APPROVED BY DATE DDOYE 2008/01/28	MATERIAL NO. <b>SEE CHART</b>		DOCUMENT NO. <b>SD-74546-481</b>		SHEET NO. <b>1 OF 2</b>	
DRAFT WHERE APPLICABLE MUST REMAIN WITHIN DIMENSIONS		ANGULAR ±1/2°		THIS DRAWING CONTAINS INFORMATION THAT IS PROPRIETARY TO MOLEX INCORPORATED AND SHOULD NOT BE USED WITHOUT WRITTEN PERMISSION					

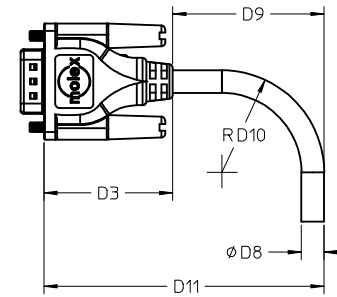
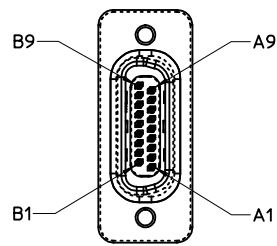
IPASS™ IS A TRADEMARK OF MOLEX

8X TO 1X PCIe IPASS CABLE ASSEMBLY

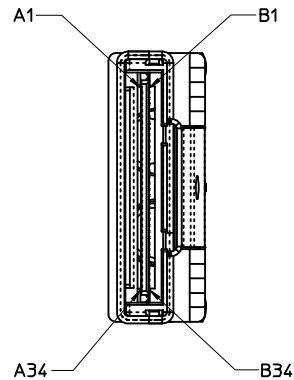
**molex**



A3, A7, B2, B6 NO CONNECT.  
FOR 1X SIDE

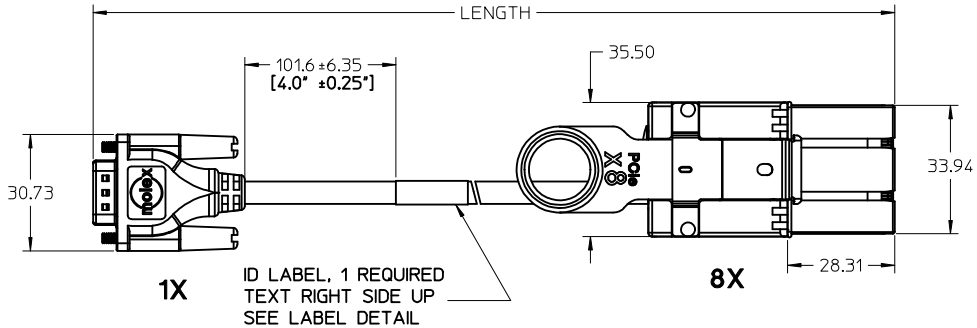


AWG	24	28	TOLERANCE
D3	34.00	34.00	REF
D8	6.5	5.80	REF
D9	35.6	32.45	MIN
D10	29.25	26.10	MIN
D11	75.95	72.80	MIN



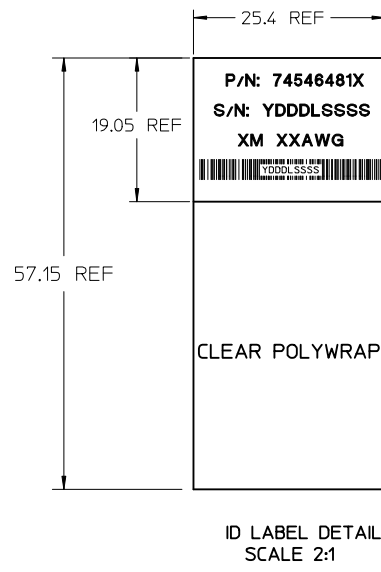
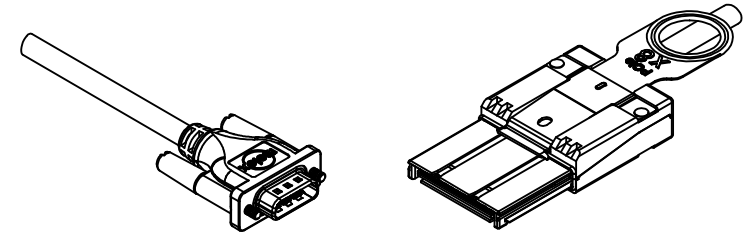
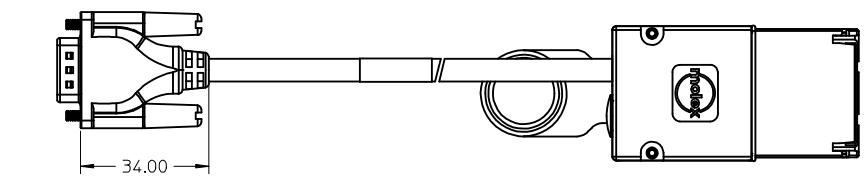
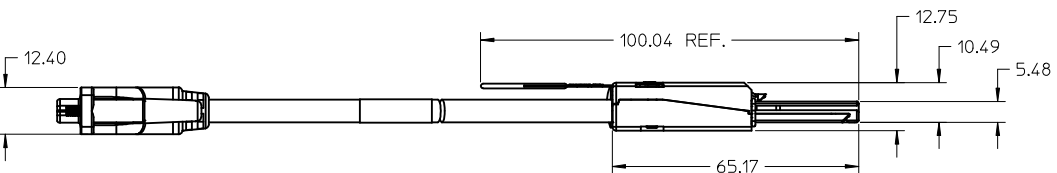
IPASS™ IS A TRADEMARK OF MOLEX

<b>BAR CODE ON LABEL</b> EC NO: CFG2015-3293 DRWIN:CHRSCHY 2014/08/14 CHKD:JMARTINEZ 2014/12/18 APPR:CHRSCHY 2014/12/18	<b>QUALITY SYMBOLS</b> 	<b>GENERAL TOLERANCES (UNLESS SPECIFIED)</b>		<b>DIMENSION STYLE</b> MM ONLY	<b>SCALE</b> 1:1	<b>DESIGN UNITS</b> METRIC	THIRD ANGLE PROJECTION		
		4 PLACES ± --- ± --- 3 PLACES ± --- ± --- 2 PLACES ± 0.13 ± --- 1 PLACE ± 0.25 ± --- 0 PLACE ± --- ± ---	m/m INCH	DRAWN BY JERWIN	DATE 2008/01/28	<b>TITLE</b> 8X TO 1X PCIE IPASS CABLE ASSEMBLY			
		DRAFT WHERE APPLICABLE MUST REMAIN WITHIN DIMENSIONS		APPROVED BY DDOYE	DATE 2008/01/28				
		ANGULAR ±1/2°		MATERIAL NO. SEE CHART	DOCUMENT NO. SD-74546-481	SHEET NO. 2 OF 2			



1X ID LABEL, 1 REQUIRED TEXT RIGHT SIDE UP SEE LABEL DETAIL

8X



LABEL TO CONTAIN THE FOLLOWING INFORMATION:  
 YDDLSSSS  
 Y = LAST DIGIT OF YEAR  
 DDD = DAY OF THE YEAR  
 L = LOCATION (1 = HPC, 2 = GUAD, 3 = DG)  
 SSSS = SERIAL NUMBER

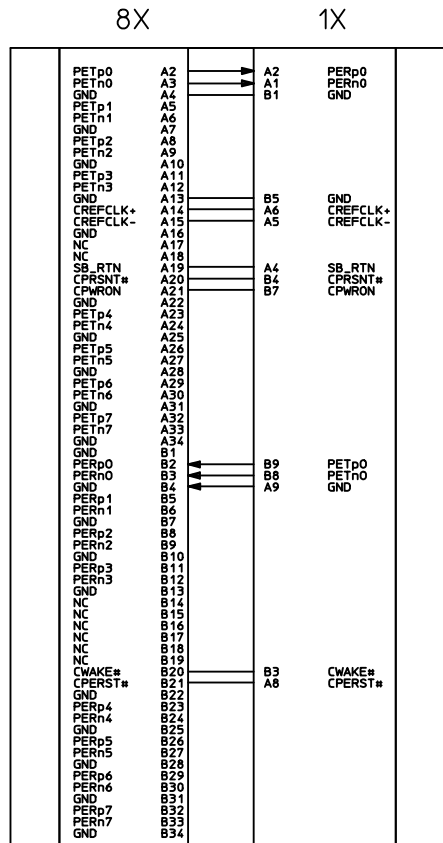
MOLEX P/N	LENGTH	AWG	TOLERANCE
745464810	0.5M	28	0.025M
745464811	1M	28	0.025M
745464812	2M	28	0.025M
745464813	3M	28	0.025M
745464814	4M	26	0.05M
745464815	5M	26	0.05M
745464816	6M	24	0.08M
745464817	7M	24	0.08M

- NOTES:
- MATERIAL= BACKSHELLS - ZINC DIECAST  
PULL - DUPONT ZYTEL ST801 NYLON 6/6
  - LENGTH AND TOLERANCE - SEE TABLE
  - ELECTRICAL PERFORMANCE PER PCI EXPRESS EXTERNAL CABLING SPEC.
  - PLUG MATES TO RECEPTACLE 755860002, AND EMI GUIDE HOUSING ASSY. 745400100
  - LEAD FREE, NO ROHS EXEMPTIONS.
  - NOT COMPLIANT WITH INSERTION LOSS SPEC PER PCIe EXTERNAL CABLING SPECIFICATION.

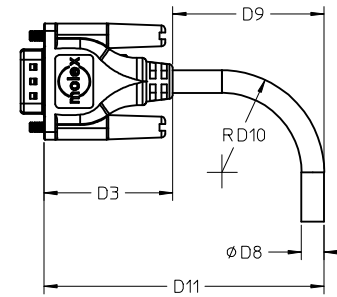
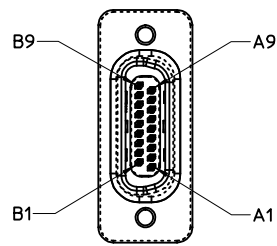
<b>BAR CODE ON LABEL</b> EC NO: CPG2015-3293 DRWIN:CHIRSCHY 2014/08/14 CHKD:JMARTINEZ 2014/12/18 APPR:CHIRSCHY 2014/12/18	QUALITY SYMBOLS 	GENERAL TOLERANCES (UNLESS SPECIFIED)		DIMENSION STYLE <b>MM ONLY</b>		SCALE <b>1:1</b>	DESIGN UNITS <b>METRIC</b>	THIRD ANGLE PROJECTION	
		mm INCH	DRAWN BY JERWIN	DATE 2008/01/28	TITLE <b>8X TO 1X PCIe IPASS CABLE ASSEMBLY</b>		MATERIAL NO. <b>SEE CHART</b>		DOCUMENT NO. <b>SD-74546-481</b>
DRAFT WHERE APPLICABLE MUST REMAIN WITHIN DIMENSIONS		ANGULAR ±1/2°		APPROVED BY DDOYE		DATE 2008/01/28		THIS DRAWING CONTAINS INFORMATION THAT IS PROPRIETARY TO MOLEX. INCORPORATED AND SHOULD NOT BE USED WITHOUT WRITTEN PERMISSION	

IPASS™ IS A TRADEMARK OF MOLEX

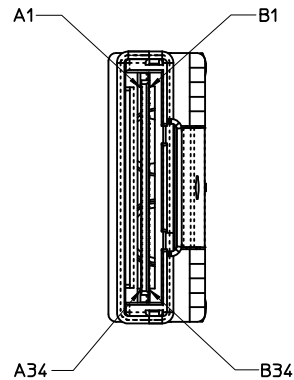
**molex**



A3, A7, B2, B6 NO CONNECT.  
FOR 1X SIDE



AWG	24	28	TOLERANCE
D3	34.00	34.00	REF
D8	6.5	5.80	REF
D9	35.6	32.45	MIN
D10	29.25	26.10	MIN
D11	75.95	72.80	MIN



IPASS™ IS A TRADEMARK OF MOLEX

<b>BAR CODE ON LABEL</b> EC NO: CFG2015-3293 DRWIN:CHRSCHY 2014/08/14 CHKD:JMARTINEZ 2014/12/18 APPR:CHRSCHY 2014/12/18	<b>QUALITY SYMBOLS</b> 	<b>GENERAL TOLERANCES (UNLESS SPECIFIED)</b>		<b>DIMENSION STYLE</b> MM ONLY	<b>SCALE</b> 1:1	<b>DESIGN UNITS</b> METRIC	THIRD ANGLE PROJECTION		
		4 PLACES ± --- ± --- 3 PLACES ± --- ± --- 2 PLACES ± 0.13 ± --- 1 PLACE ± 0.25 ± --- 0 PLACE ± --- ± ---	mmm INCH	DRAWN BY JERWIN	DATE 2008/01/28	<b>TITLE</b> 8X TO 1X PCIE IPASS CABLE ASSEMBLY			
		DRAFT WHERE APPLICABLE MUST REMAIN WITHIN DIMENSIONS		APPROVED BY DDOYE	DATE 2008/01/28				
		ANGULAR ±1/2°		MATERIAL NO. <b>SEE CHART</b>	DOCUMENT NO. SD-74546-481	SHEET NO. 2 OF 2			