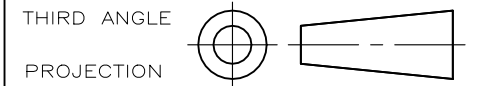


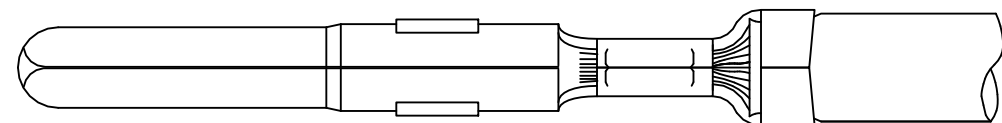
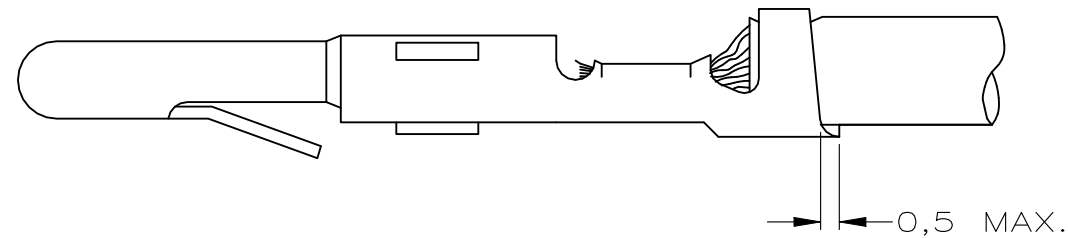
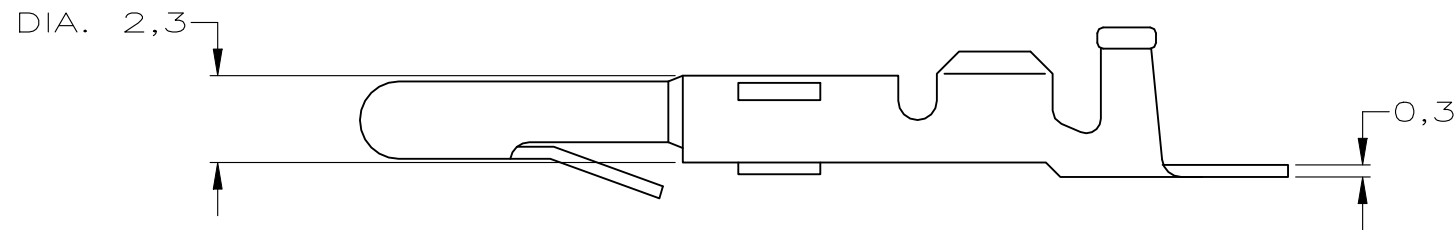
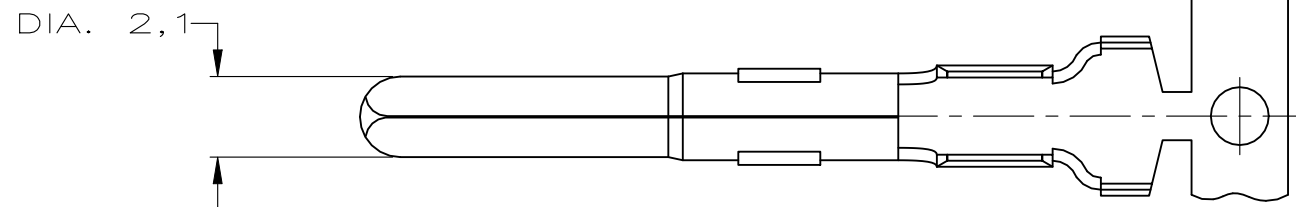
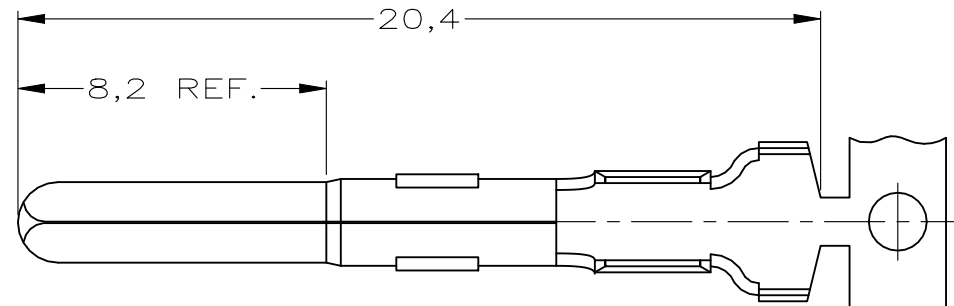
DO NOT SCALE
DIMENSIONS IN mm

METRIC



NOTES:

- ① FOR USE ON STANDARD APPLICATORS (RIGHT- LEFT FEED).
- ② FOR USE ON MINIATURE APPLICATORS (LEFT- RIGHT FEED)
- ③ OBSOLETE



WIRE RANGE :
0,3-0,75mm
INSULATION RANGE :
1,4-2,4 DIA.

		-	-	-
		-	-	-
		-	-	-
		-	-	-
	②	PRE-TINPLATED	PHOSPHOR BR.	163555-8
	②	UNPLATED	PHOSPHOR BR.	163555-7
	②	PRE-TINPLATED	BRASS	163555-6
	②	UNPLATED	BRASS	163555-5
	①	PRE-TINPLATED	PHOSPHOR BR.	163555-4 ③
	①	UNPLATED	PHOSPHOR BR.	163555-3 ③
	①	PRE-TINPLATED	BRASS	163555-2 ③
	①	UNPLATED	BRASS	163555-1 ③

NOTES	PLATING	MATERIAL	PARTNUMBER
CUSTOMER DRAWING FOR REFERENCE ONLY WILL NOT BE UPDATED			
© COPYRIGHT 19 - BY AMP HOLLAND B.V. ALL INTERNATIONAL RIGHTS RESERVED. AMP PRODUCTS MAY BE COVERED BY U.S. AND FOREIGN AND/OR PATENTS PENDING. THIS DRAWING IS UNPUBLISHED RELEASED FOR PUBLICATION .19			
B2	ECR-23-195825	WLS VS 03FEB2023	AMP HOLLAND B.V. 's-Hertogenbosch, The Netherlands.
B1	ECR-21-101087	PJ VS 11MAY2021	
B	EH-1221-96	JvL AB 24-10-96	
LTR.	REVISION RECORD	DR. CHK. DATE	NAME PIN MATE-N-LOK.
DR.: J.v.LIEMPT	CHK.: A.BIJNEN.	APP.: M.v.DRIEL	DWG.No. C-163555
DATE: 24 OCT 96	DATE: -	DATE: -	REV.LTR. B2 SHEET 1 OF 1 A3