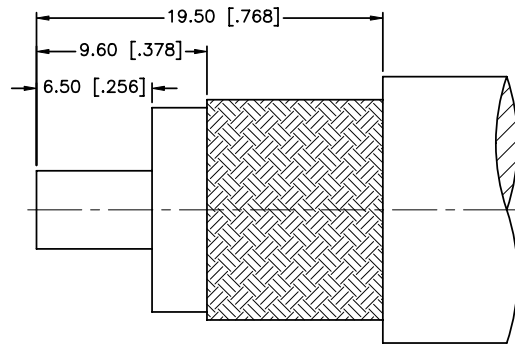
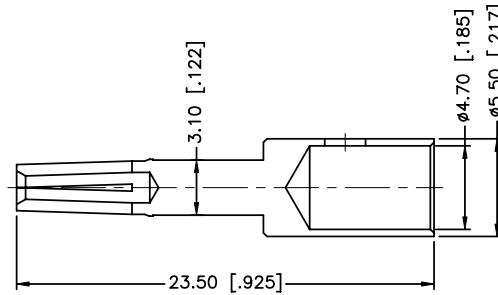
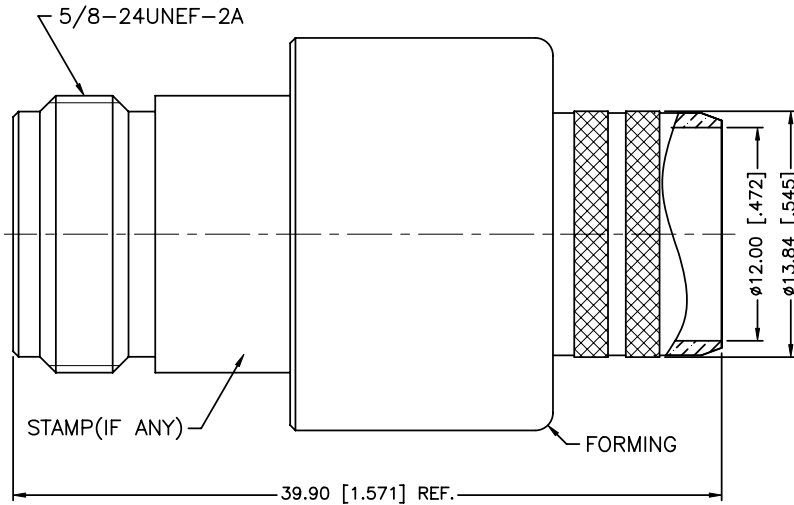


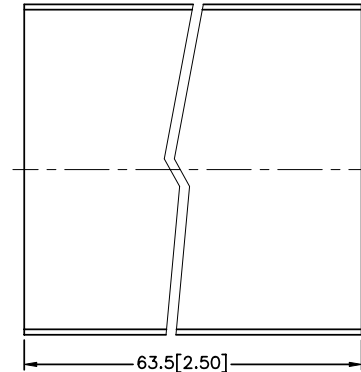
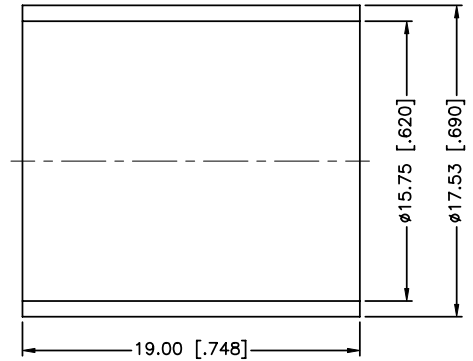
REV.	DATE	ECR NO.	DESCRIPTION
NC	03/18/98	XXXXXX	INITIAL RELEASE
A	02/19/07	XXXXXX	UPDATE DRAWING FORMAT
B	12/Jul/11	2198	THE PLATING NEXCOTE WAS NICKEL & CHANGED THE KNURL DESIGN ON BARREL



RECOMMENDED  
CABLE STRIPPING DIM'S



- 1.CRIMPED FERRULE  
HEX CRIMP SIZE .610"
- 2.CONTACT PIN TO SOLDER



QTY	DESCRIPTION	MATERIAL	FINISH
1	BODY	BRASS	NEXCOTE
1	INSULATOR	PTFE	NATURAL
1	BARREL	BRASS	NEXCOTE
1	CONTACT PIN	PHOSPHOR BRONZE	GOLD
1	FERRULE	BRASS	NEXCOTE
6	HEAT SHRINK TUBING		

UNLESS OTHERWISE SPECIFIED DIMENSIONS ARE IN MILLIMETERS. DIMENSIONS IN [ ] ARE IN INCHES AND FOR CUSTOMER REFERENCE ONLY.

UNLESS OTHERWISE SPECIFIED TOLERANCES FOR MILLIMETERS ARE:  
0.5 - 8mm ± 0.20mm  
8 - 30mm ± 0.40mm  
30 - 120mm ± 0.50mm

UNLESS OTHERWISE SPECIFIED TOLERANCES FOR INCHES ARE:  
.020 - .315 = ± 0.007"  
.315 - 1.180 = ± 0.015"  
1.180 - 4.724 = ± 0.020"

DO NOT SCALE DRAWING

APPROVALS	DATE
DRAWN R.MAO	12/Jul/11
CHECKED	
ISSUED	
SHEET 1 OF 1	
CAD FILE	C:/CONNEX/172207.DWG

# Amphenol Connex

PART DESCRIPTION N CRIMP JACK-LMR 600 CABLE			
PART NO. 172207			
DWG. NO.	172207.DWG	REV.	B
SIZE	A	SCALE	NA