



Electrical specifications

Center Frequency: 829.5 MHz
Bandwidth: 11 MHz
Input / Output Impedance: 50 Ohms
Passband: 824-835 MHz
Passband Insertion Loss: 3.6 dB Max
Passband Ripple: 0.18 dB Max / 1 MHz
Rejection: 1-700 MHz 32.0 dB Min
Rejection 2: 700-806 MHz 37.0 dB Min
Rejection 3: 806-815 MHz 27.0 dB Min
Rejection 4: 851-869 MHz 52.0 dB Min
Rejection 5: 869-880 MHz 52.0 dB Min
Rejection 6: 880-1500 MHz 32.0 dB Min
Power Handling: 3.0 W Max

Mechanical

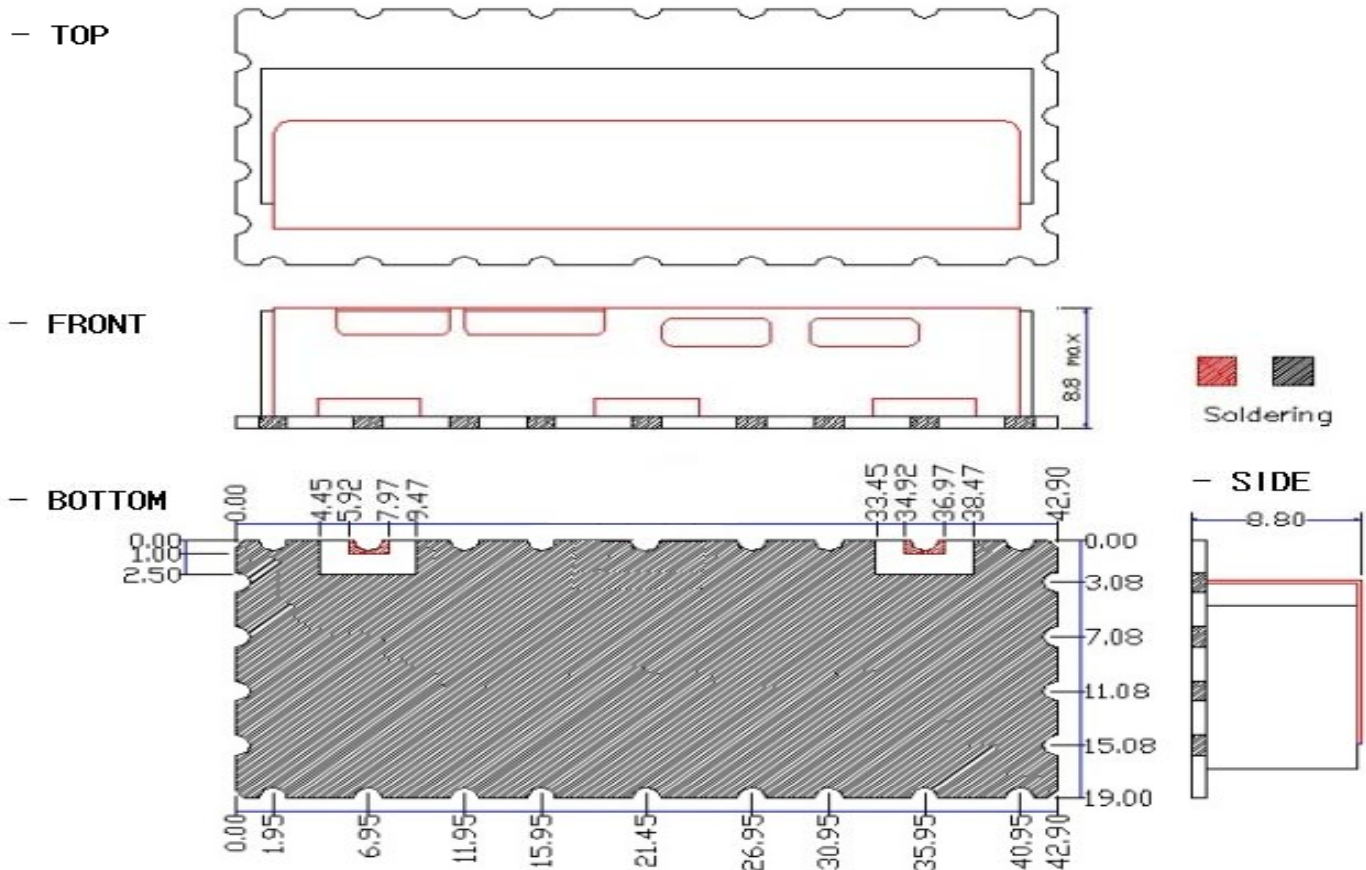
Mounting Method: SMT
Dimensions: 42.90 x 19 x 8.8 mm

Environmental

Operating Temperature: -40°C to +85°C
Storage Temperature: -50°C to +90°C

This product is RoHs compliant.

Outline Drawing:





ANATECH ELECTRONICS INC
RF & Microwave Filters & Products

829.5 MHz Ceramic Bandpass Filter

Part Number: AM829B1230



Response Plot:

