

# EVBUM2671/D

## RSL10-COIN-GEVB Programming

### Overview

RSL10-COIN-GEVB is a Bluetooth® beacon board featuring RSL10, the industry's lowest power [Bluetooth 5 SoC](#), and [N34TS108](#), a low-energy temperature sensor. This board is battery powered and advertises temperature, UID and URL as beacon packets. Furthermore, RSL10-COIN-GEVB supports Firmware over-the-air (FOTA) and is CMSIS-Pack compliant.

### Required Hardware & Equipment

**Table 1. HARDWARE DETAILS RSL10-COIN-GEVB**

Chip Variant	RSL10 6x6 QFN NCH- RSL10-101Q48-ABG
Antenna Type	PCB Antenna
Debugging Options	6-pin needle connector 1-pin from Interface header (UART TX) No reset button
User Input	Battery holder button
IO Header	3 V, GND, I <sup>2</sup> C, 1xGPIO
External Wake-up Sources (for down to 25nA operation)	Batt. holder button N34TS108 /ALERT signal GIO_SPARE
Temperature Sensor	<a href="#">N34TS108</a>
Board Supply Range	1.4–3.6 V

### Software

The RSL10-COIN-GEVB software is based on B-IDK and CMSIS pack which allow for rapid development of various use cases. In order to set up the package refer to the Prerequisites section of the Bluetooth Low Energy IoT Development Kit (B-IDK) Getting Started Guide <https://www.onsemi.com/pub/Collateral/EVBUM2589-D.PDF>

### Firmware

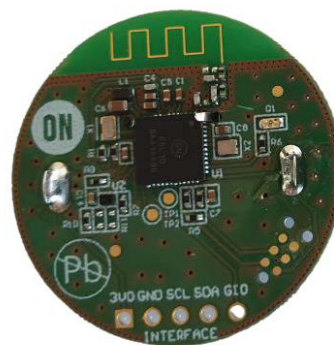
This section outlines the several existing use cases for the firmware, its dependencies and how to set it up to begin using RSL10-COIN-GEVB.



**ON Semiconductor®**

[www.onsemi.com](http://www.onsemi.com)

## EVAL BOARD USER'S MANUAL



**Figure 1. Top View**



**Figure 2. Bottom View**

**Eddystone Beacon Application**

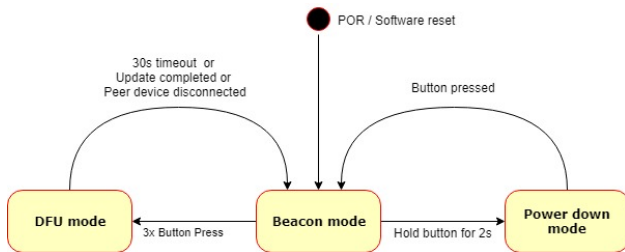
Initial firmware application for the board with basic Eddystone Beacon functionality.

Features:

- FOTA enabled
- Non-connectable advertising mode with up to 3 Eddystone Beacon slots
- Power-off mode with minimal power consumption

Dependencies:

- FOTA library
- Bootloader



**Figure 3. Eddystone Beacon Application Power Modes**

Default operation mode of the board is to act as an Eddystone Beacon with non-connectable advertising. Based on compile time configuration the board will be able to transmit any combination of the following Eddystone frames:

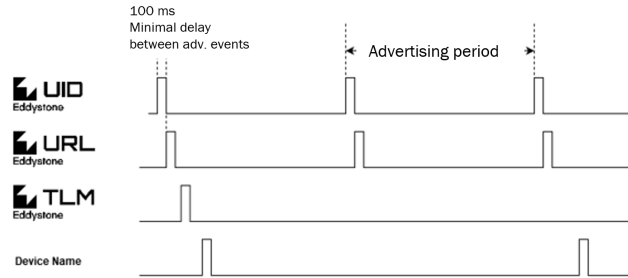
- Eddystone URL – Contains encoded URL that points to a single web page. Default URL will be pointing to <https://onsemi.com/b-idk> web page. This packet frame is recognized by both Android™ and iOS® as a physical web beacon.
- Eddystone UID – Transmits a unique identifier of given device and consists of 10 byte Namespace ID and 6-byte Instance ID. By default the namespace will be generated from truncated hash of fully-qualified domain name of beacon.rsl10-coin-gevb.onsemi.com and instance id will be identical to BD address. This can be configured to other values.
- Eddystone TLM – Unencrypted telemetry frame is used to periodically transmit battery voltage, measured beacon temperature, number of transmitted adv. Packets and time since power-on.

Eddystone is configured using slots. Each slot is standalone and has its own configuration that allows to set:

- Eddystone packet type – URL, UID or TLM along with type specific parameters.
- Slot Advertising interval – From 0.1 s up to 5 seconds.
- TX power level – From -17 dBm up to 6 dBm.

All of these parameters are customizable per slot. By default the application will come with 3 slots, one for URL, UID and TLM, that will be configurable using CMSIS Configuration Wizard. Slots can be easily customized directly in code to fit any other scenarios like advertising multiple URL beacons.

*Custom Device Name packet* format will be also available to transmit user-friendly device name.



**Figure 4. Example Beacon Slot Configuration with 4 Active Slots Transmitting UID, URL, TLM and Device Name Frames**

*Temperature measurements* will be carried out only if Eddystone TLM frames are enabled. To reduce power consumption the temperature will be updated at separate low-duty sampling rate which will be higher than BLE advertising interval. Temperature sampling rate will be configurable from 1 up to 60 minutes. Temperature will be measured during first advertising interval after sample interval expires. Optionally high-duty temperature measurement option can be provided to measure on every TLM advertising event.

*Power Down mode* is available to minimize power consumption when advertising is not required and board can remain idle. Power down mode can be entered by pressing the battery holder button for more than 2 seconds. Power down mode can be exited only by external interrupt caused by press of battery holder button. No state is retained during power-down mode (no RAM retention, boot from flash) and is treated similarly to PoR when returning to normal operation. Number of adv. packets and time since power-on will be reset upon wake-up.

Optionally the state and time since power on can be retained during power down mode at the cost of enabling RTC and 8 kB RAM retention (increase of deep sleep current of RSL10 from 25 nA to 100 nA).

*Beacon mode* enters deep sleep mode between advertising intervals. During deep sleep 32 kHz oscillator, RTC counter will be enabled and at least 32 kB of RAM retained or 16 kB if light BLE stack is used.

*DFU mode* is used to update device firmware using FOTA protocol provided by RSL10 SDK. DFU mode can be entered from Beacon mode by pressing the battery holder

button three times in quick succession (max 1 s between button presses). When DFU mode is entered the board is restarted and DFU component takes full control for 30 seconds allowing any device to connect and initiate the firmware update process. If no update attempt or connection is made in 30 seconds the board resets and returns back to Beacon mode. Number of send adv. packets and time since power on will be reset. DFU mode timeout can be increased as necessary. The application will return back to Beacon Mode as well if peer device disconnects or FOTA firmware update was successful.

**Reading Eddystone Frames with Mobile App**

Eddystone data frames can be captured by generically available beacon apps. RSL10 Sensor Beacon [https://play.google.com/store/apps/details?id=com.onsemi\\_ble\\_on\\_v0\\_3&hl=en\\_US](https://play.google.com/store/apps/details?id=com.onsemi_ble_on_v0_3&hl=en_US) is available for Android. Other examples can be and BLE Scanner, or Beacon scanner for Android and iOS.



Figure 5. RSL10 Sensor Beacon App

**CMSIS Pack Configuration Wizard**

Within the CMSIS software package the Configuration Wizard is available for RSL10-COIN-GEVB allowing the modification of the firmware and advertising patterns with a GUI without need for programming as shown in Figure 5 and Figure 7.

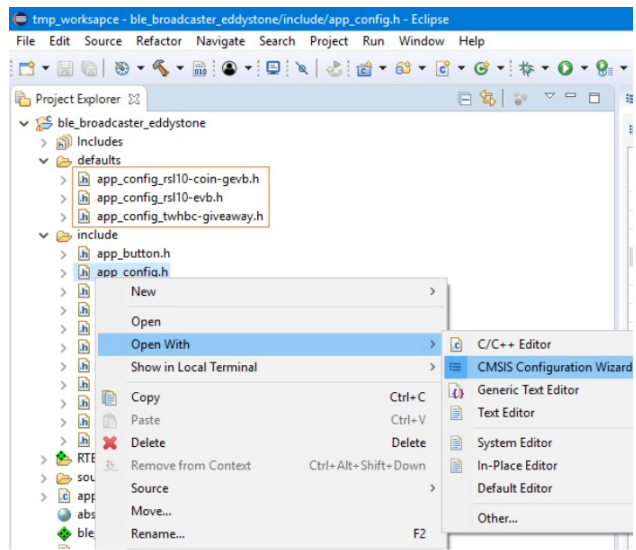


Figure 6. app\_config.h File Opened in CMSIS

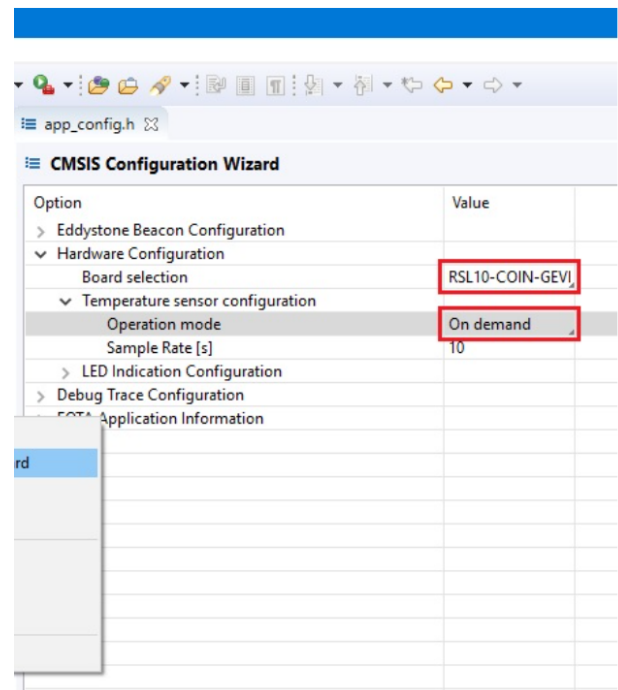


Figure 7. CMSIS Configuration Wizard

**FOTA Library**

This library is required to enable FOTA functionality and reduces the size of application image by reusing BLE stack functions from FOTA image. Custom build of FOTA image will be required to adjust for different pin mappings of the

board. If possible the FOTA image will be reconfigured to use Light version of BLE stack to reduce BLE stack size and number of RAM blocks that need to be retained during deep sleep cycles of Beacon mode.

**Updating Firmware over FOTA**

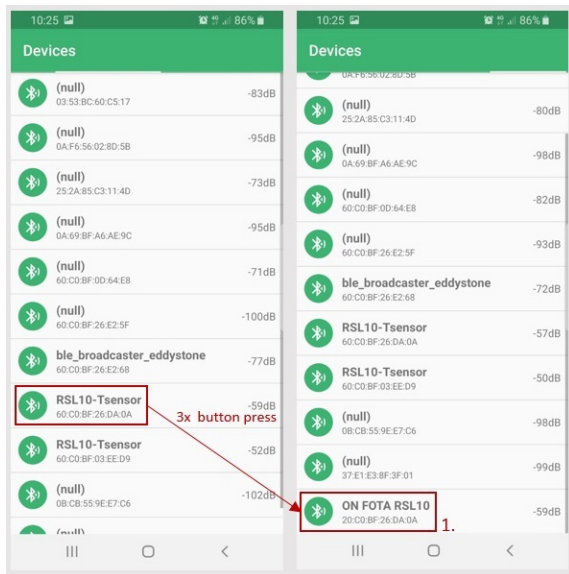
This section describes how to update device firmware by using FOTA and second BLE capable device that initiates the process.

• **Using RSL10 FOTA Mobile Application**

This method requires an Android or iOS device with RSL10 FOTA application installed. See [Additional Resources](#) section for download links for both apps or scan below QR Code from an Android or iOS device.

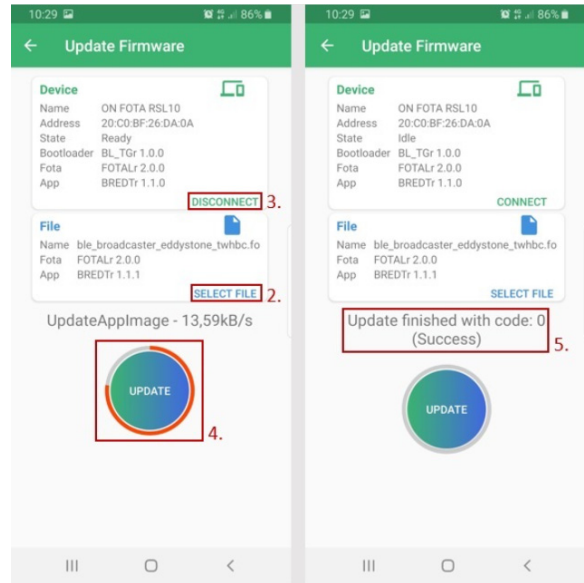
Steps:

1. Build project.
2. Copy the generated ble\_broadcaster\_eddystone.fota file (or any other .fota image to be loaded) into your mobile phone. This FOTA image as well as others are available on the RSL10-COIN-GEVB website <https://www.onsemi.com/support/evaluation-board/rsl10-coin-gevb> . Different images can be loaded to test FOTA functionality.
3. Open the RSL10 FOTA application in your phone.
4. Switch the RSL10-COIN-GEVB board into DFU mode by quickly pressing the button 3 times. Transition to DFU mode will be indicated by 0.5 s flash of green LED
5. Find device named ON FOTA RSL10 in the list of scanned devices in RSL10 FOTA app [https://play.google.com/store/apps/details?id=com.onsemi.fota&hl=en\\_US](https://play.google.com/store/apps/details?id=com.onsemi.fota&hl=en_US).



**Figure 8. Update Process of a Temperature Coin with the RSL10 FOTA Application (1/2)**

6. Click on it to go to firmware update screen and in File section click SELECT FILE and select the copied ble\_broadcaster\_eddystone.fota
7. Click on CONNECT to connect to target device. Versions of firmware in the device and in Fota image will be shown.
8. Click UPDATE button to start the DFU process and wait until it is completed.



**Figure 9. Update Process of a Temperature Coin with the RSL10 FOTA Application (2/2)**

**Updating Firmware with Bootloader and Debugger**

This section describes how to generate and flash an image into an empty or erased development board with a SEGGER J-Flash (part of J-Link debugger installation).

The RSL10 Standalone Flash Loader utility from the RSL10 Software Utility Apps package is also required. It can be downloaded from <https://www.onsemi.com/rsl10>.

Using SEGGER J-Flash to merge images.

1. Build project and copy generated ble\_broadcaster\_eddystone.fota file into your preferred working directory.
2. Rename the .fota file by changing the file extension into .bin
3. Copy bootloader image file bootloader.bin for your board from Device/RSL10/bootloader\_image/\$BOARD\_NAME folder of SDK CMSIS-Pack and place it inside your working directory.
4. Open J-Flash by searching J-Flash in start menu or launching it from J-Link installation directory.
5. Select Create a new project and click Start J-Flash.

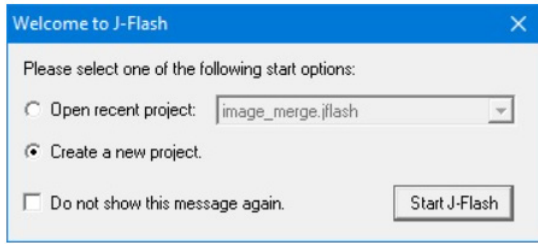


Figure 10. Start J-Flash

6. Select ON Semiconductor RSL10-COIN-GEVB as Target Device and leave other settings as is.

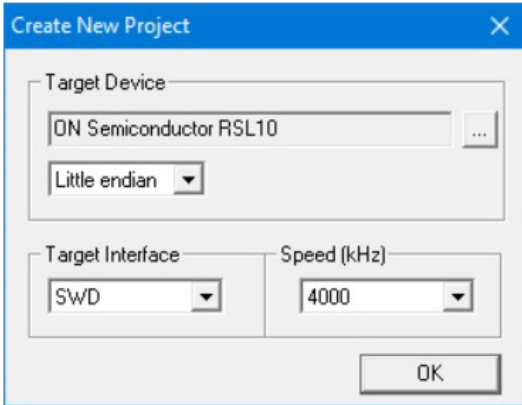


Figure 11. Selecting ON Semiconductor RSL10 Target Device

7. Use File → Open data file... menu, select bootloader.bin from your working directory and enter 0x100000 as start address.

8. Use File → Merge data file...menu, select the renamed ble\_broadcaster\_eddystone.bin file from your working directory and enter 0x102000 as start address.
9. Use File → Save data file as... menu, select Intel Hex file (.hex) as file type and save it as flash\_image.hex file.
10. Load the flash\_image.hex file into development board using the RSL10 Standalone Flash Loader Utility and J-Link debug probe with respective debugging adapter or On-Board Debugger in case of RSL10 Evaluation Board.

**Additional Resources**

For additional information about the use of FOTA refer to: readme\_ble\_peripheral\_server\_hrp\_fota.md file in the ble\_peripheral\_server\_fota sample application for more details about FOTA implementation.

- RSL10 Firmware Over The Air Users Guide PDF in the documentation folder of RSL10 CMSIS-Pack
- [RSL10 FOTA](#) mobile application for Android devices
- [RSL10 FOTA](#) mobile application for iOS devices
- [RSL10 Sensor Beacon](#) mobile application for Android for displaying of Eddystone beacon data
- [Eddystone Specification](#)
- [Eddystone URL](#) frame specification
- [Eddystone UID](#) frame specification
- [Unencrypted Eddystone TLM](#) frame specification

Android is a trademark of Google LLC.  
 Bluetooth is a registered trademark of Bluetooth SIG.  
 iOS is a trademark or registered trademark of Cisco in the U.S. and other countries and is used under license.  
 ON Semiconductor is licensed by the Philips Corporation to carry the I<sup>2</sup>C bus protocol.  
 All other brand names and product names appearing in this document are registered trademarks or trademarks of their respective holders.

**onsemi**, **Onsemi**, and other names, marks, and brands are registered and/or common law trademarks of Semiconductor Components Industries, LLC dba "**onsemi**" or its affiliates and/or subsidiaries in the United States and/or other countries. **onsemi** owns the rights to a number of patents, trademarks, copyrights, trade secrets, and other intellectual property. A listing of **onsemi**'s product/patent coverage may be accessed at [www.onsemi.com/site/pdf/Patent-Marking.pdf](http://www.onsemi.com/site/pdf/Patent-Marking.pdf). **onsemi** is an Equal Opportunity/Affirmative Action Employer. This literature is subject to all applicable copyright laws and is not for resale in any manner.

The evaluation board/kit (research and development board/kit) (hereinafter the "board") is not a finished product and is not available for sale to consumers. The board is only intended for research, development, demonstration and evaluation purposes and will only be used in laboratory/development areas by persons with an engineering/technical training and familiar with the risks associated with handling electrical/mechanical components, systems and subsystems. This person assumes full responsibility/liability for proper and safe handling. Any other use, resale or redistribution for any other purpose is strictly prohibited.

**THE BOARD IS PROVIDED BY ONSEMI TO YOU "AS IS" AND WITHOUT ANY REPRESENTATIONS OR WARRANTIES WHATSOEVER. WITHOUT LIMITING THE FOREGOING, ONSEMI (AND ITS LICENSORS/SUPPLIERS) HEREBY DISCLAIMS ANY AND ALL REPRESENTATIONS AND WARRANTIES IN RELATION TO THE BOARD, ANY MODIFICATIONS, OR THIS AGREEMENT, WHETHER EXPRESS, IMPLIED, STATUTORY OR OTHERWISE, INCLUDING WITHOUT LIMITATION ANY AND ALL REPRESENTATIONS AND WARRANTIES OF MERCHANTABILITY, FITNESS FOR A PARTICULAR PURPOSE, TITLE, NON-INFRINGEMENT, AND THOSE ARISING FROM A COURSE OF DEALING, TRADE USAGE, TRADE CUSTOM OR TRADE PRACTICE.**

**onsemi** reserves the right to make changes without further notice to any board.

You are responsible for determining whether the board will be suitable for your intended use or application or will achieve your intended results. Prior to using or distributing any systems that have been evaluated, designed or tested using the board, you agree to test and validate your design to confirm the functionality for your application. Any technical, applications or design information or advice, quality characterization, reliability data or other services provided by **onsemi** shall not constitute any representation or warranty by **onsemi**, and no additional obligations or liabilities shall arise from **onsemi** having provided such information or services.

**onsemi** products including the boards are not designed, intended, or authorized for use in life support systems, or any FDA Class 3 medical devices or medical devices with a similar or equivalent classification in a foreign jurisdiction, or any devices intended for implantation in the human body. You agree to indemnify, defend and hold harmless **onsemi**, its directors, officers, employees, representatives, agents, subsidiaries, affiliates, distributors, and assigns, against any and all liabilities, losses, costs, damages, judgments, and expenses, arising out of any claim, demand, investigation, lawsuit, regulatory action or cause of action arising out of or associated with any unauthorized use, even if such claim alleges that **onsemi** was negligent regarding the design or manufacture of any products and/or the board.

This evaluation board/kit does not fall within the scope of the European Union directives regarding electromagnetic compatibility, restricted substances (RoHS), recycling (WEEE), FCC, CE or UL, and may not meet the technical requirements of these or other related directives.

FCC WARNING – This evaluation board/kit is intended for use for engineering development, demonstration, or evaluation purposes only and is not considered by **onsemi** to be a finished end product fit for general consumer use. It may generate, use, or radiate radio frequency energy and has not been tested for compliance with the limits of computing devices pursuant to part 15 of FCC rules, which are designed to provide reasonable protection against radio frequency interference. Operation of this equipment may cause interference with radio communications, in which case the user shall be responsible, at its expense, to take whatever measures may be required to correct this interference.

**onsemi** does not convey any license under its patent rights nor the rights of others.

LIMITATIONS OF LIABILITY: **onsemi** shall not be liable for any special, consequential, incidental, indirect or punitive damages, including, but not limited to the costs of requalification, delay, loss of profits or goodwill, arising out of or in connection with the board, even if **onsemi** is advised of the possibility of such damages. In no event shall **onsemi**'s aggregate liability from any obligation arising out of or in connection with the board, under any theory of liability, exceed the purchase price paid for the board, if any.

The board is provided to you subject to the license and other terms per **onsemi**'s standard terms and conditions of sale. For more information and documentation, please visit [www.onsemi.com](http://www.onsemi.com).

## PUBLICATION ORDERING INFORMATION

### LITERATURE FULFILLMENT:

Email Requests to: [orderlit@onsemi.com](mailto:orderlit@onsemi.com)

**onsemi Website:** [www.onsemi.com](http://www.onsemi.com)

### TECHNICAL SUPPORT

**North American Technical Support:**

Voice Mail: 1 800-282-9855 Toll Free USA/Canada

Phone: 011 421 33 790 2910

**Europe, Middle East and Africa Technical Support:**

Phone: 00421 33 790 2910

For additional information, please contact your local Sales Representative