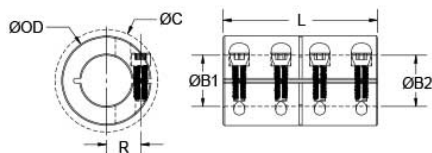




## CLX-19-16-SS

Ruland CLX-19-16-SS, 1-3/16" x 1" Rigid Coupling, 303 Stainless Steel, One-Piece Clamp Style, 2 1/16" OD, 3 1/4" Length



### Description

Ruland CLX-19-16-SS is a one-piece rigid coupling with 1.1875" x 1.0000" bores, 2 1/16" OD, and 3 1/4" length. Proprietary Nypatch® anti-vibration coating on hardware allows for even seating of the screw, repeated screw installations, prevents galling, and maintains high holding power. It eliminates the need to treat screws upon receipt greatly reducing installation time. Forged screws test beyond ANSI standards to ensure maximum holding power. Tightly controlled bore tolerance of +.002"/+.0005" is maintained. CLX-19-16-SS is made from 303 stainless steel with hardware of like material for consistent corrosion resistance. It is machined from solid bar stock that is sourced exclusively from North American mills and is RoHS3 and REACH compliant. CLX-19-16-SS is manufactured in our Marlborough, MA factory under strict controls using proprietary processes.

### Product Specifications

<b>Bore (B1)</b>	1.1875 in	<b>Small Bore (B2)</b>	1.0000 in
<b>B1 Max Shaft Penetration</b>	1.625 in	<b>B2 Max Shaft Penetration</b>	1.625 in
<b>Outer Diameter (OD)</b>	2 1/16 in	<b>Bore Tolerance</b>	+0.0020 in / +0.0005 in
<b>Length (L)</b>	3 1/4 in	<b>Clearance Diameter (C) MAX</b>	2.242 in
<b>Recommended Shaft Tolerance</b>	+0.0000 in / -0.0005 in	<b>Forged Clamp Screw</b>	1/4-28
<b>Screw Material</b>	18-8 300 Series Stainless Steel with <a href="#">Nypatch®</a>	<b>Hex Wrench Size</b>	3/16 in
<b>Screw Finish</b>	Bright	<b>Seating Torque</b>	110 lb-in
<b>Screw Location (R)</b>	0.807 in	<b>Number of Screws</b>	4 ea
<b>Rated Torque</b>	Rating Coming Soon	<b>Moment of Inertia</b>	1.4597 lb-in <sup>2</sup>
<b>Maximum Speed</b>	4,000 RPM	<b>Full Bearing Support Required?</b>	No
<b>Nypatch® Anti-Vibration Hardware?</b>	Yes	<b>Zero-Backlash?</b>	Yes
<b>Material Specification</b>	Type 303 Austenitic, Non-Magnetic Bar	<b>Temperature</b>	-40°F to 350°F (-40°C to 176°C)
<b>Finish Specification</b>	Bright, No Plating	<b>Manufacturer</b>	Ruland Manufacturing
<b>Country of Origin</b>	USA	<b>Weight (lbs)</b>	2.138900
<b>UPC</b>	634529112281	<b>Tariff Code</b>	8483.60.8000
<b>UNSPC</b>	31163009		
<b>Note 1</b>	Performance ratings are for guidance only. The user must determine suitability for a particular application.		
<b>Prop 65</b>	⚠️ <b>WARNING</b> This product can expose you to the chemical Nickel (metallic), known to the State of California to cause cancer. For more information go to <a href="http://www.P65Warnings.ca.gov">www.P65Warnings.ca.gov</a> .		

### Installation Instructions

1. Align the CLX-19-16-SS one-piece rigid coupling on the two shafts to be connected. There should be no misalignment.
2. Tighten the Nypatch® screws in two stages, starting with the inside screws. Using a 3/16 in torque wrench, tighten the inside screws to 55 lb-in which is half the recommended seating torque. Repeat for the outside screws, again tightening to half of the recommended seating torque.
3. Tighten the screws to the full recommended seating torque of 110 lb-in following the same pattern, starting with the inside screws first.