

MATERIALS AND FINISHES:

SEE PSD-85305-0232

73415-6183	85305-0232, TAPE AND REEL WITH KAPTON TAPE	1K PER REEL	1K PER CARTON
73415-6182	85305-0232, TAPE AND REEL	1K PER REEL	1K PER CARTON
73415-6181	85305-0232, TAPE AND REEL WITH KAPTON TAPE	1K PER REEL	7K PER CARTON
73415-6180	85305-0232, ONE PER BAG	ONE PER BAG	500 PER CARTON
PART NO.	PACKAGING	QUANTITY	

A4	2019/11/26	ADD -6183 PER EWR #13478-A
REV	DATE	DESCRIPTION

THIS DRAWING CONTAINS INFORMATION THAT IS PROPRIETARY TO MOLEX ELECTRONIC TECHNOLOGIES, LLC AND SHOULD NOT BE USED WITHOUT WRITTEN PERMISSION

DIMENSION UNITS	SCALE	CURRENT REV DESC:		<b>molex</b>				
INCH/MM	NTS							
GENERAL TOLERANCES (UNLESS SPECIFIED)		EC NO: 628191		SMP, PLUG SMT LIMITED DETENT SMP-P/PCB				
ANGULAR TOL ± 2.0°		DRWN: RYEH 2019/11/26						
4 PLACES ±		CHK'D: YCHENG 2019/12/06		PRODUCT CUSTOMER DRAWING				
3 PLACES ±		APPR: YCHENG 2019/12/06						
2 PLACES ± 0.25		INITIAL REVISION:		DOCUMENT NUMBER <b>SD-73415-618</b>				
1 PLACE ±		DRWN: SSHAH 2007/05/11						
0 PLACES ±		APPR: JWIENER 2007/05/11		DOC TYPE PSD		DOC PART 001	REVISION A4	
DRAFT WHERE APPLICABLE MUST REMAIN WITHIN DIMENSIONS		THIRD ANGLE PROJECTION	DRAWING C-SIZE	SERIES 73415	MATERIAL NUMBER SEE TABLE		CUSTOMER GENERAL MARKET	SHEET NUMBER 1 OF 1

DOCUMENT STATUS	P1	RELEASE DATE	2019/12/06 07:42:40
-----------------	----	--------------	---------------------

**MATERIALS AND FINISHES:**

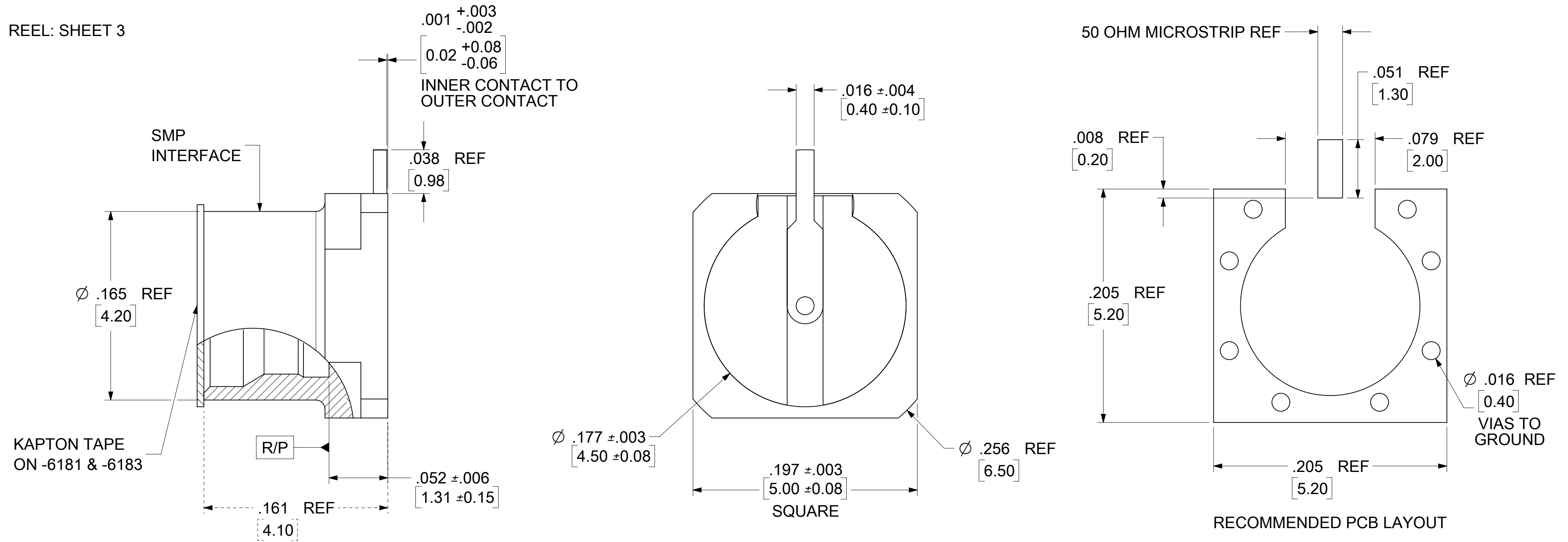
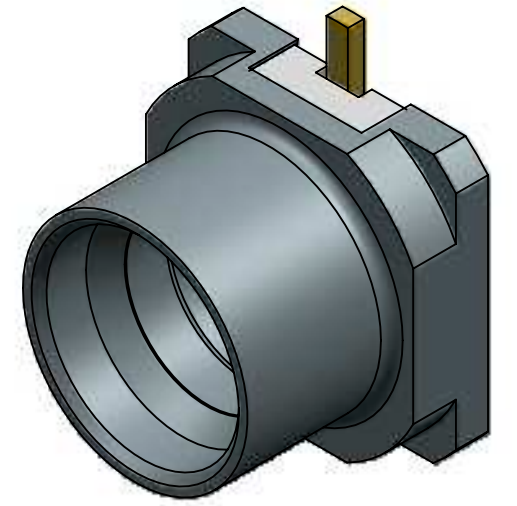
INNER & OUTER CONTACT: BRASS  
 PLATED: GOLD (30µ-in MIN)  
 OVER NICKEL (100µ-in MIN)

INSULATOR: LCP  
 UL FLAMMABILITY RATING 94 V-0

KAPTON: POLYAMIDE  
 COLOR: AMBER

TAPE: SHEET 2

REEL: SHEET 3



73415-6183	85305-0232, TAPE AND REEL WITH KAPTON TAPE	1K PER REEL	1K PER CARTON
73415-6182	85305-0232, TAPE AND REEL	1K PER REEL	1K PER CARTON
73415-6181	85305-0232, TAPE AND REEL WITH KAPTON TAPE	1K PER REEL	7K PER CARTON
73415-6180	85305-0232, ONE PER BAG	ONE PER BAG	500 PER CARTON
85305-0232	TAPE AND REEL	1K PER REEL	7K PER CARTON
PART NO.	PACKAGING	QUANTITY	

PS-89675-3320	PRODUCT SPECIFICATION
MIL-STD-248B, FIG 326-3	INTERFACE, SMP, LIMITED DETENT
SPECIFICATION	DESCRIPTION

B15	2020/5/29	KAPTON ON -6181 & -6183 PER EWR #13478-C
REV	DATE	DESCRIPTION

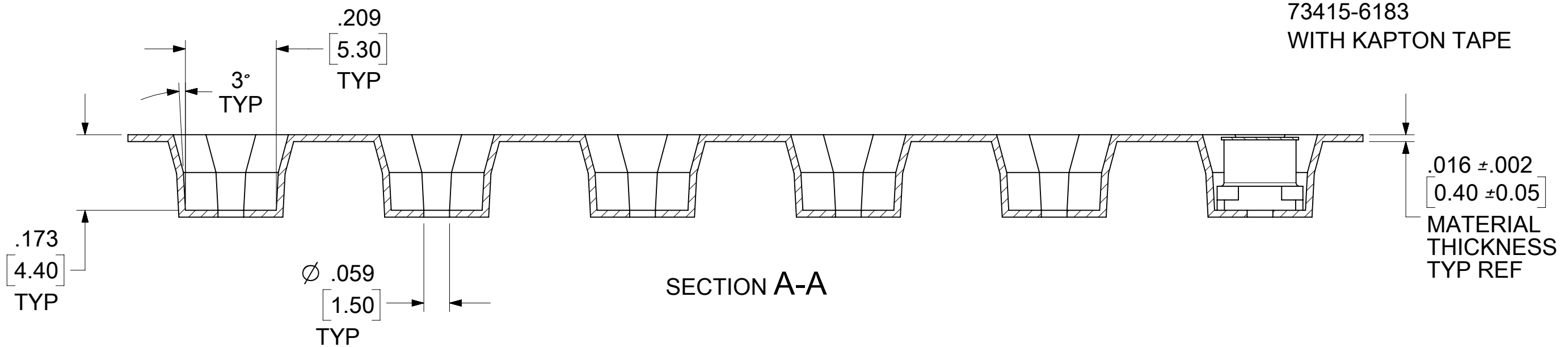
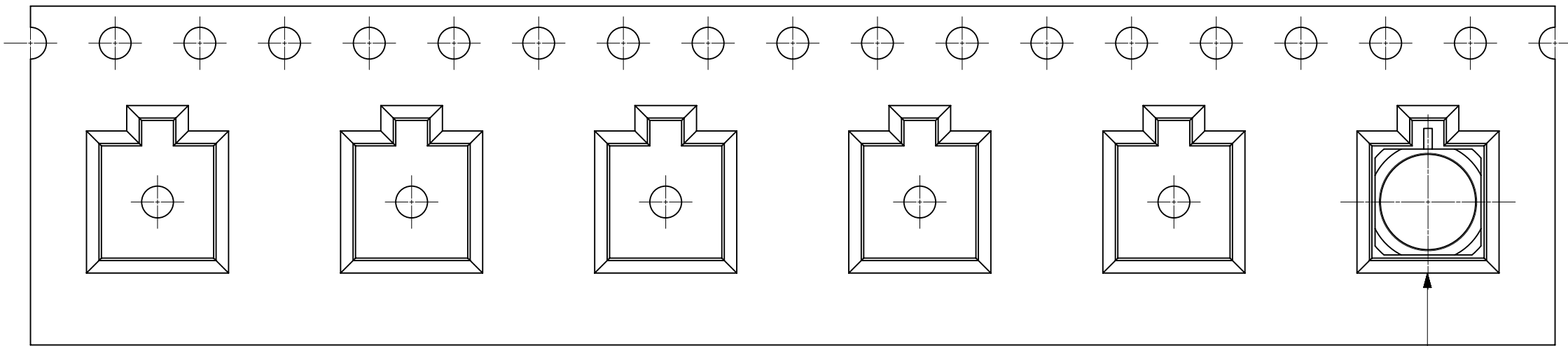
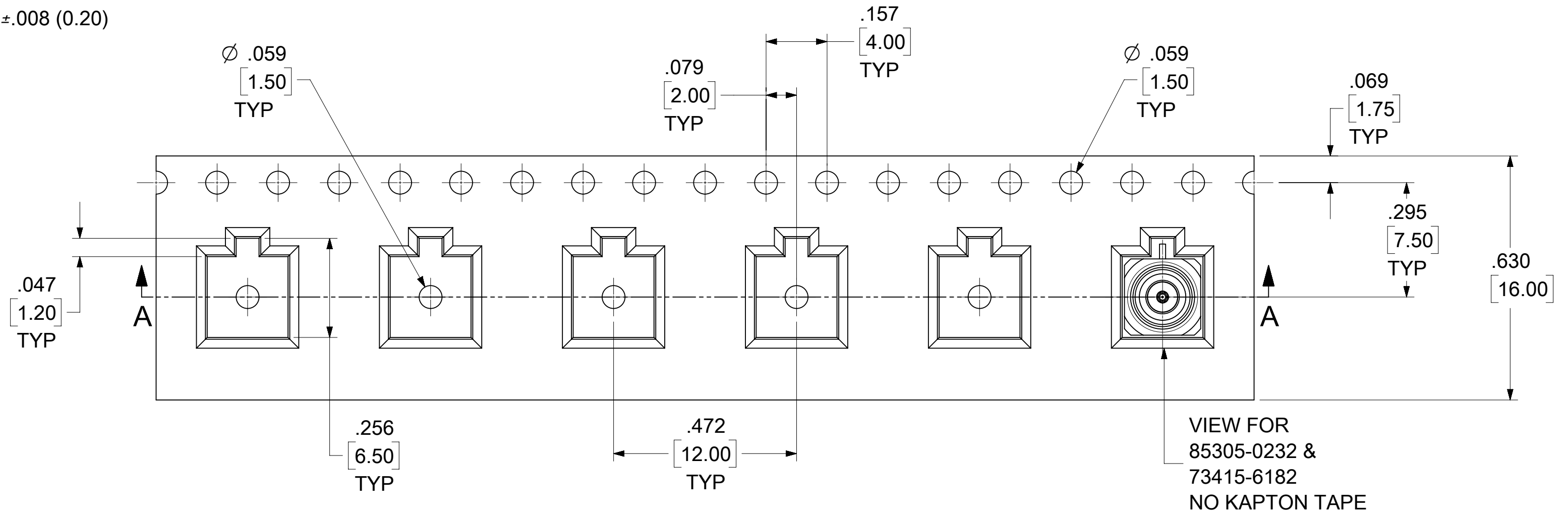
DOCUMENT STATUS	P1	RELEASE DATE	2020/07/08 08:32:10
-----------------	----	--------------	---------------------

THIS DRAWING CONTAINS INFORMATION THAT IS PROPRIETARY TO MOLEX ELECTRONIC TECHNOLOGIES, LLC AND SHOULD NOT BE USED WITHOUT WRITTEN PERMISSION

DIMENSION UNITS <b>INCH/MM</b>	SCALE <b>NTS</b>	CURRENT REV DESC:	<b>molex</b>			
GENERAL TOLERANCES (UNLESS SPECIFIED)	ANGULAR TOL ± 2.0°	EC NO: 638738				
4 PLACES ±	3 PLACES ±	DRWN: RYEH 2020/05/29	SMP, PLUG SMT LIMITED DETENT SMP-P/PCB, EWR-11818			
2 PLACES ± 0.25	1 PLACE ±	CHK'D: YCHENG 2020/07/08				
0 PLACES ±		APPR: YCHENG 2020/07/08	PRODUCT CUSTOMER DRAWING			
		INITIAL REVISION:				
DRAFT WHERE APPLICABLE MUST REMAIN WITHIN DIMENSIONS	THIRD ANGLE PROJECTION	DRWN: AROBERTSON 2005/07/29	DOCUMENT NUMBER	DOC TYPE	DOC PART	REVISION
		APPR: JWIENER 2005/08/01	<b>SD-85305-0232</b>	PSD	001	<b>B15</b>
		DRAWING SERIES	MATERIAL NUMBER	CUSTOMER	SHEET NUMBER	
		<b>C-SIZE 85305</b>	SEE TABLE		1 OF 3	

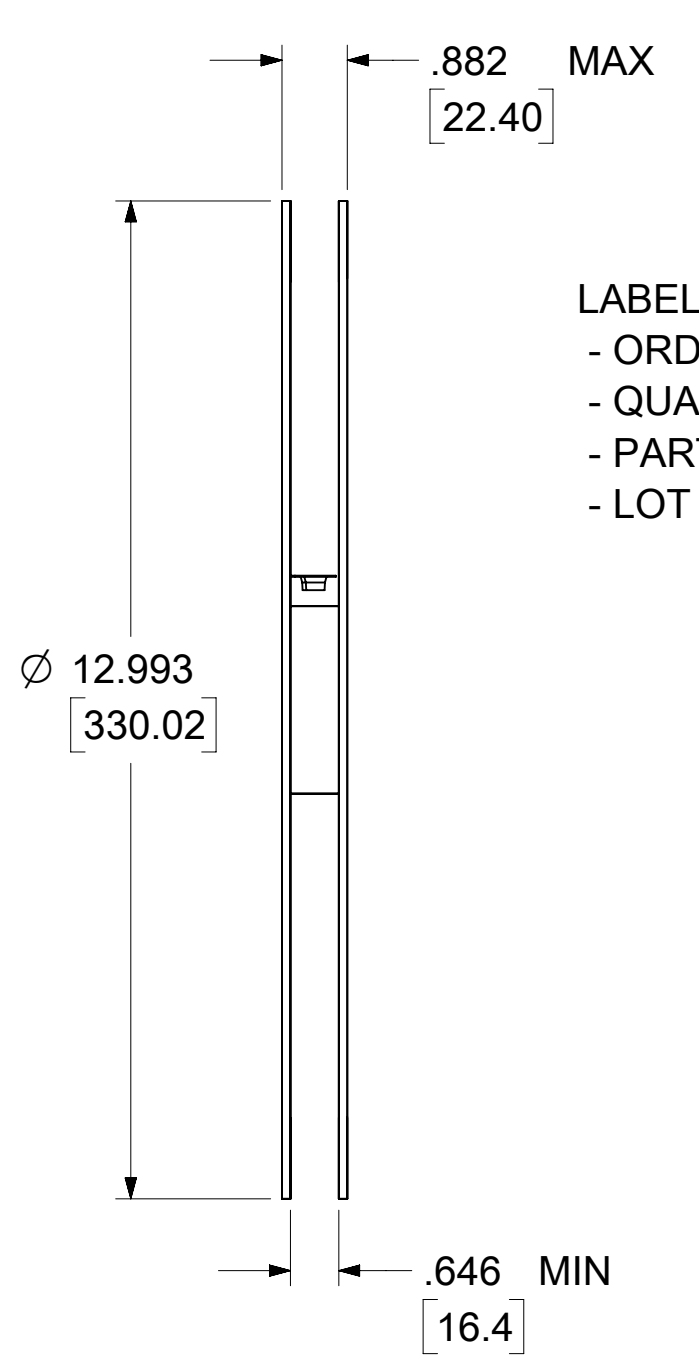
NOTE:

1. 10 PITCH CUMULATIVE TOLERANCE: ±.008 (0.20)

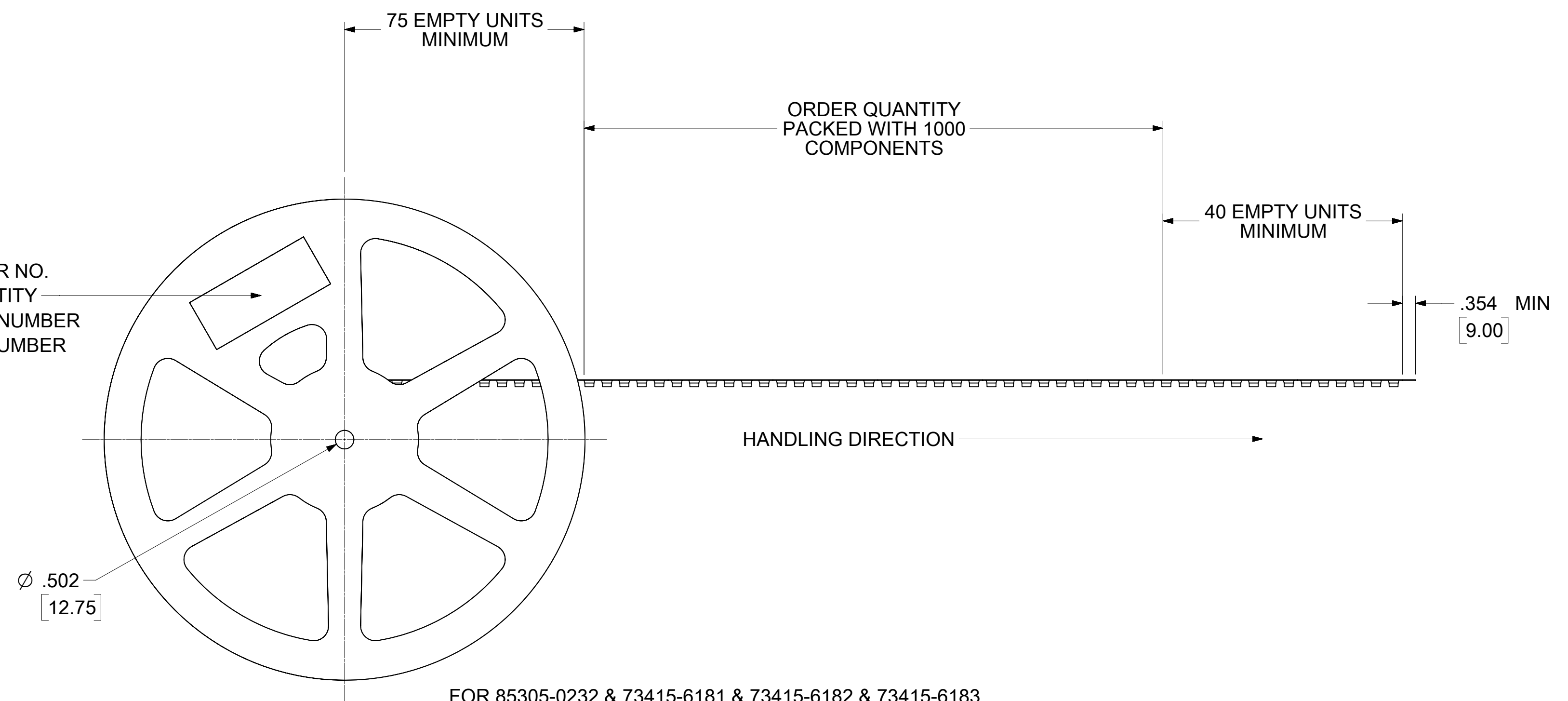


MATERIAL: POLYSTYRENE  
COLOR: BLACK  
.016 ±.002 [0.40 ±0.05] THICK

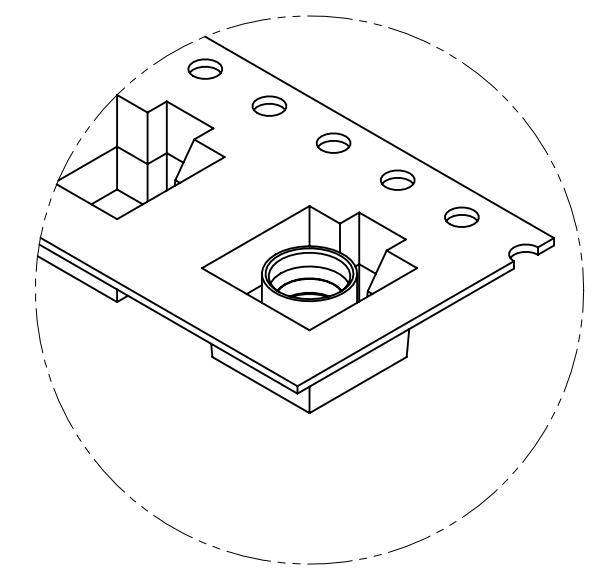
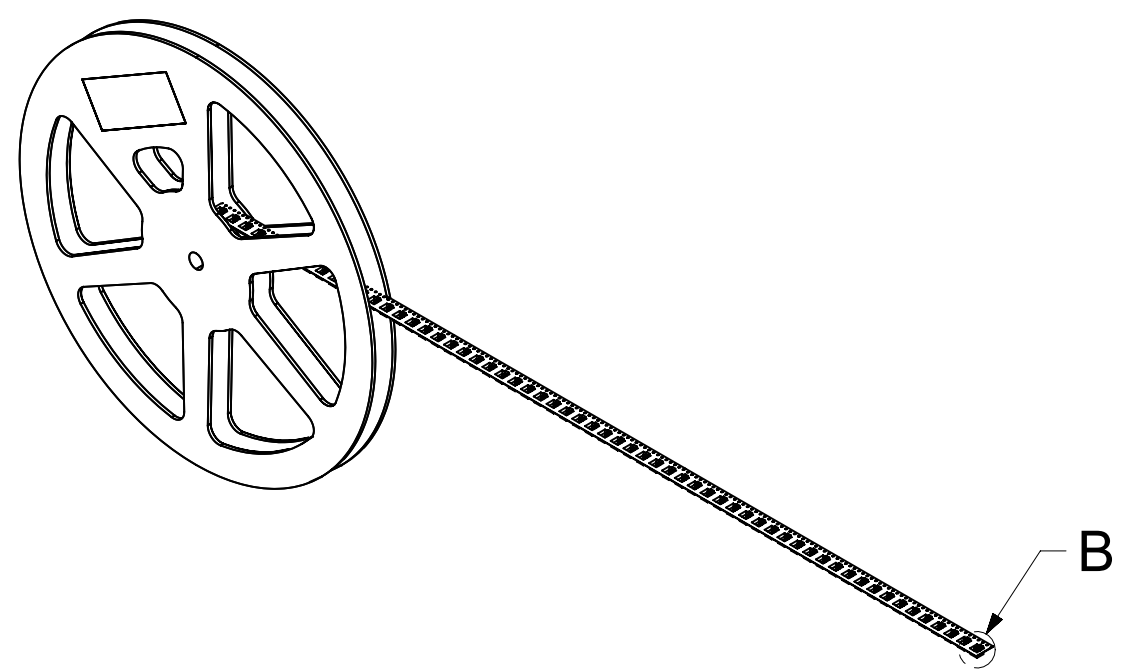
THIS DRAWING CONTAINS INFORMATION THAT IS PROPRIETARY TO MOLEX ELECTRONIC TECHNOLOGIES, LLC AND SHOULD NOT BE USED WITHOUT WRITTEN PERMISSION									
DIMENSION UNITS		SCALE		CURRENT REV DESC:					
INCH/MM		NTS							
GENERAL TOLERANCES (UNLESS SPECIFIED)									
ANGULAR TOL ± 2.0°				EC NO: 638738					
4 PLACES ±				DRWN: RYEH		2020/05/29			
3 PLACES ±				CHK'D: YCHENG		2020/07/08			
2 PLACES ± 0.25				APPR: YCHENG		2020/07/08			
1 PLACE ±				INITIAL REVISION:					
0 PLACES ±				DRWN: AROBERTSON		2005/07/29			
				APPR: JWIENER		2005/08/01			
DRAFT WHERE APPLICABLE MUST REMAIN WITHIN DIMENSIONS				THIRD ANGLE PROJECTION		DRAWING		SERIES	
						C-SIZE		85305	
DOCUMENT STATUS				P1		RELEASE DATE		2020/07/08 08:32:10	
DOCUMENT NUMBER				DOC TYPE		DOC PART		REVISION	
SD-85305-0232				PSD		001		B15	
MATERIAL NUMBER				CUSTOMER		SHEET NUMBER			
SEE TABLE						2 OF 3			



LABEL:  
 - ORDER NO.  
 - QUANTITY  
 - PART NUMBER  
 - LOT NUMBER



FOR 85305-0232 & 73415-6181 & 73415-6182 & 73415-6183



DETAIL B  
 SCALE 3:1

THIS DRAWING CONTAINS INFORMATION THAT IS PROPRIETARY TO MOLEX ELECTRONIC TECHNOLOGIES, LLC AND SHOULD NOT BE USED WITHOUT WRITTEN PERMISSION									
DIMENSION UNITS		SCALE		CURRENT REV DESC:				<b>molex</b>	
INCH/MM		NTS							
GENERAL TOLERANCES (UNLESS SPECIFIED)				EC NO: 638738				SMP, PLUG SMT LIMITED DETENT SMP-P/PCB, EWR-11818	
ANGULAR TOL ± 2.0°				DRWN: RYEH 2020/05/29					
4 PLACES ±				CHK'D: YCHENG 2020/07/08				PRODUCT CUSTOMER DRAWING	
3 PLACES ±				APPR: YCHENG 2020/07/08					
2 PLACES ± 0.25				INITIAL REVISION:				DOCUMENT NUMBER	
1 PLACE ±				DRWN: AROBERTSON 2005/07/29					
0 PLACES ±				APPR: JWIENER 2005/08/01				SD-85305-0232	
DRAFT WHERE APPLICABLE MUST REMAIN WITHIN DIMENSIONS		THIRD ANGLE PROJECTION		DRAWING		SERIES		MATERIAL NUMBER	
				C-SIZE		85305		SEE TABLE	
DOCUMENT STATUS		RELEASE DATE		CUSTOMER		SHEET NUMBER		REVISION	
P1		2020/07/08 08:32:10				3 OF 3		B15	