



America

CERTIFICATE

No. B 16 01 57396 407

Holder of Certificate: XP Power LLC.



15641 Red Hill Avenue, Suite 100
Tustin CA 92780
USA

Production
Facility(ies):

77041, 61661

Certification Mark:



Product:

Power supply

Model(s):

ECL25US05-XB0232A, ECL25US24-XE0526, ECL25USxx-y
(where xx can be number between 03 to 48
designating the output voltage; y can be E, P,
S, SD, T or blank, for different connector and
enclosure configurations "-" provided optionally).

Parameters:

Rated Input: ECL25USxx-y, ECL25US05-XB0232A:
100-240 VAC, 0.8 A, 50-60 Hz
ECL25US24, ECL25US24-XE0526:
100-240 VAC, 50-60 Hz, 0.8 A; or
40-85 VDC, 0.8 A

DC Output Ratings: See attachment
Protection Class: Class I or Class II at end use
Temperature, Ambient:

ECL25USxx-y, ECL25US24-XE0526:
50°C at 100% rated output
70°C at 50% rated output
ECL25US05-XB0232A:
50°C at 100% rated output
85°C at 50% rated output

Elevation for use: 0-3048 m above sea level
See attachment for further information.

Tested according to: EN 60950-1:2006/A2:2013

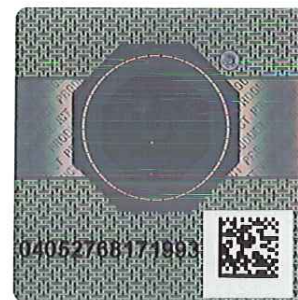
The product was tested on a voluntary basis and complies with the essential requirements. The certification mark shown above can be affixed on the product. It is not permitted to alter the certification mark in any way. In addition the certification holder must not transfer the certificate to third parties. See also notes overleaf.

Test report no.: 095-72110365108-000

Valid until: 2019-06-20

Date, 2016-01-19

Page 1 of 3





America

ATTACHMENT TO CERTIFICATE NO. B 16 01 57396 407 FOR XP POWER LLC

POWER SUPPLY

General Product information:

Models below are component type open frame or potted power supplies intended for use in IT equipment. They are power supplies intended for building-in.

Approved models and Rated Outputs:

Model Number	OUTPUT RATING	
	Voltage (VDC)	Current (A)
ECL25US03	3.3	6
ECL25US05, ECL25US05-XB0232A	5	5
ECL25US09	9	2.8
ECL25US12	12	2.1
ECL25US15	15	1.67
ECL25US24, ECL25US24-XE0526	24	1.04
ECL25US48	48	0.52
ECL25US24, ECL25US24-XE0526 (with DC input)	24	0.625

Model Differences:

Model ECL25US24-XE0526 is identical to ECL25US24, the different model No. is for marketing purpose.

Model ECL25USxx-T is similar to ECL25USxx-P except for ECL25USxx-T has I/O terminals and ECL25USxx-P has I/O pins.

Model ECL25USxx-T is similar to Model ECL25USxx-E except for ECL25USxx-E is housed in plastic enclosure with epoxy. xx can be 03 to 48 to represent the output voltage.

Secondary heat sink H1 provided on Models ECL25US03-Y, ECL25US05-Y, and ECL25US09-Y.

Model ECL25USxx-S is similar to Model ECL25USxx-E except for Model ECL25USxx-S with I/O terminal blocks, ECL25USxx-E with I/O pins, enclosure shape, PWB layout, and model designation.

Model ECL25USxx-SD is similar to Model ECL25USxx-S except for Model ECL25USxx-SD is provided with a DIN rail clip.

Model ECL25US05-XB0232A is similar to Model ECL25USxx-T except for Model ECL25US05-XB0232A is rated for 50% of rated output at 85°C ambient.

**ATTACHMENT TO CERTIFICATE NO. B 16 01 57396 407
FOR XP POWER LLC**



America

Conditions of Acceptability:

The models require:

- A suitable electrical and fire enclosure must be provided in the end use equipment.
- When installed in end product, the clearance and creepage distance between the hazardous voltage circuitry and accessible parts shall meet the standard(s) requirements. Hi-pot test, touch current test and ground bond test (for Class I end product) shall be conducted at end use.
- Terminal block type ELK508 suitable for solid/stranded copper wiring only, 30-14 AWG, 4.5 lbs.-in. torque. Terminal block type ETB33 suitable for solid/stranded copper wiring only, 22-14 AWG, 3.48 lbs.-in. torque.
- For DC supplied models, the input shall be isolated from primary circuit by double or reinforced insulation.