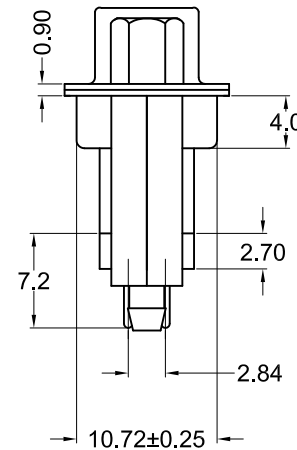
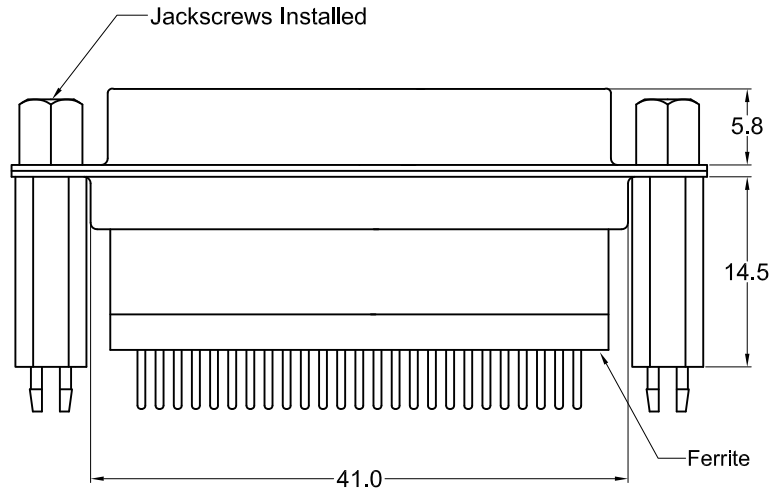


Recommended PCB Layout
(Top View)



Material and Finish

- Shell: Steel, Nickel plated
- Insulator: PBT with glass-fiber reinforcement, UL 94V-0, color-black
- Contact Material: Socket - Phosphor Bronze
- Contact Plating Options:
 - Standard Option: Gold flash on mating end, Tin on termination end, with entire contact Nickel
 - 15 Option: 0.000015" Gold on mating end, Tin on termination end, with entire contact Nickel
 - 30 Option: 0.000030" Gold on mating end, Tin on termination end, with entire contact Nickel

Electrical Specifications

- Rated Current: 2A
- Rated Voltage: 30V RMS
- Dielectric Withstanding Voltage: 500 V (rms) AC for 1 minute
- Insulation Resistance: more than 1000 Megohm at 500 V DC
- Contact Resistance: 13 milliohm Max
- Temperature Rating: -55°C to +105°C

Ferrite Specifications	
Measured Value(OHM)	Test Frequency
20 MIN.	25 MHz.
50 MIN.	100 MHz.

Ordering Information	
Part Number	Contact Area Plating Finish
KF88X-BD-25S-BRJ	Gold Flash (standard option)
KF88X-BD-25S-BRJ15	15u" Gold (15 option)
KF88X-BD-25S-BRJ30	30u" Gold (30 option)



Tolerances
X.X ± 0.25
X.XX ± 0.15
Unless Stated Otherwise

REV.	DATE	DESCRIPTION	REV. BY	CHK. BY	DRAWN BY	DATE
A1	07/28/06	New Drawing	R. Aguirre	H. MA	R. Aguirre	07/27/06
A2	1/21/08	ECO# 07-052	WILL H.	H. MA		
A3	12/17/10	ECO #10-098	S. Vien	H. MA		
A4	12/31/17	ECO #17-035	J. Elbanna	C. Furumasu		

KF88X-BD-25S-BRJ

Vertical 25 pos. Female D-Sub w/ Ferrite, RoHS Compliant
Precision Formed Contacts, Boardlocks w/ Jackscrews

