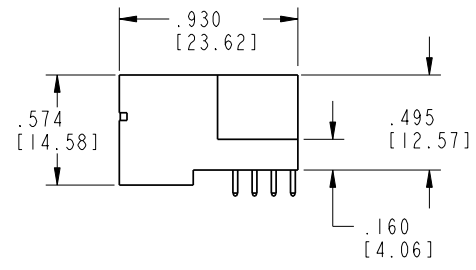
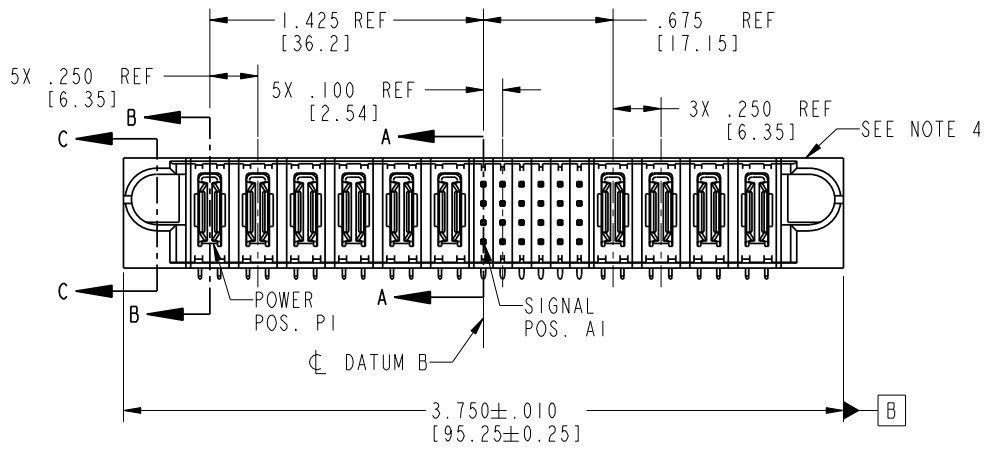
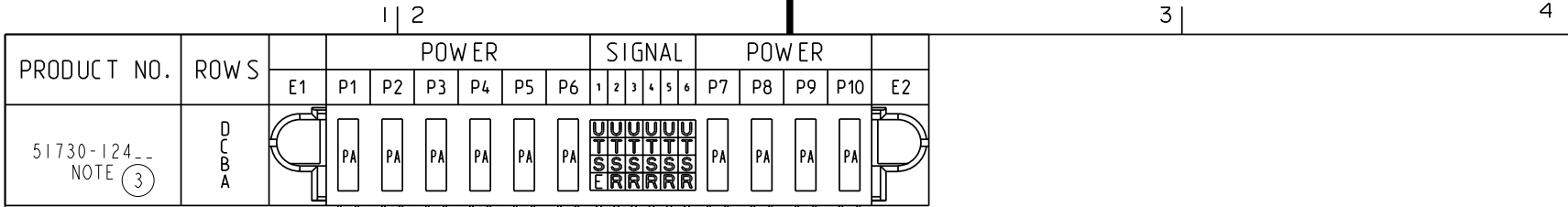


Tous droits strictement réservés. Reproduction ou communication à des tiers interdite sous quelque forme que ce soit sans autorisation écrite du propriétaire. Propriété de c FCI. Droits de reproduction FCI.

All rights strictly reserved. Reproduction or issue to third parties in any form whatever is not permitted without written authority from the proprietor. Property of FCI. Copyright FCI.



CODE	DIM "M" MATING LENGTH	CONTACT TYPE
U	.270 [6.86]	SIGNAL
T	.270 [6.86]	SIGNAL
S	.270 [6.86]	SIGNAL
R	.270 [6.86]	SIGNAL
PA	N/A [N/A]	POWER
E	.220 [5.59]	SIGNAL

mat'l code				SEE NOTE 2		tolerances unless otherwise specified		CUSTOMER	
lir	ecn no.	dr	date	linear	.XX±.01/0.X±0.3	COPY		FCI	
A	DG06-0158	JMG	04/10/06	angles	.XXX±.005/0.XX±0.13	projection		www.fciconnect.com	
					.XXX±.0020/0.XXX±0.051	INCH/MM		title	
				dr	0°±2°	scale		6P + 24S + 4P	
				enr	JM GUO 04/10/06	1:1		RIGHT ANGLE SOLDER HEADER	
				chr	SLUO 04/10/06			product family	
				appd	BEER FU 04/10/06			PwrBlade	
					JOSEPH HSIA 04/10/06			code	
sheet index	revision sheet	A	A	A	A			213	
		1	2	3	4			sheet	
								1 of 4	

size		dwg no		code	
A		51730-124		213	
				sheet	
				1 of 4	

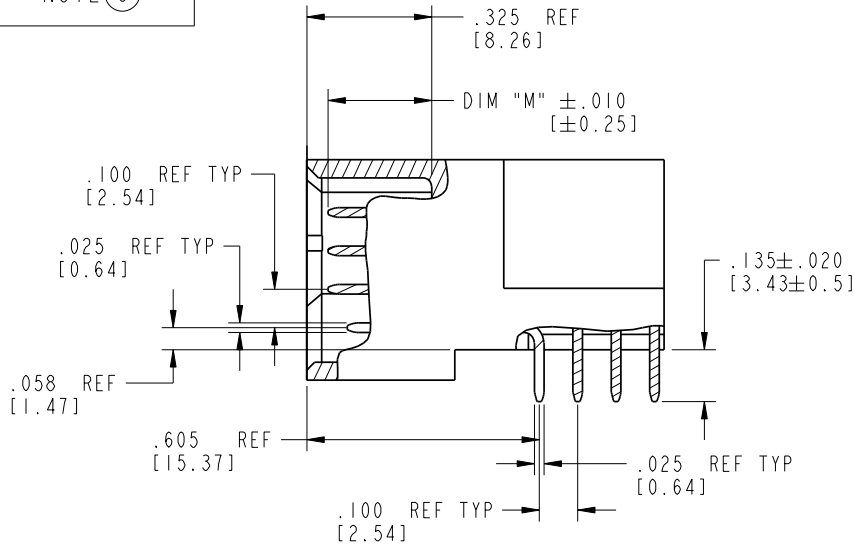
Tous droits strictement réservés. Reproduction ou communication à des tiers interdite sous quelque forme que ce soit sans autorisation écrite du propriétaire. Propriété de c.FCI. Droits de reproduction FCI.

All rights strictly reserved. Reproduction or issue to third parties in any form whatever is not permitted without written authority from the proprietor. Property of FCI. Copyright FCI.

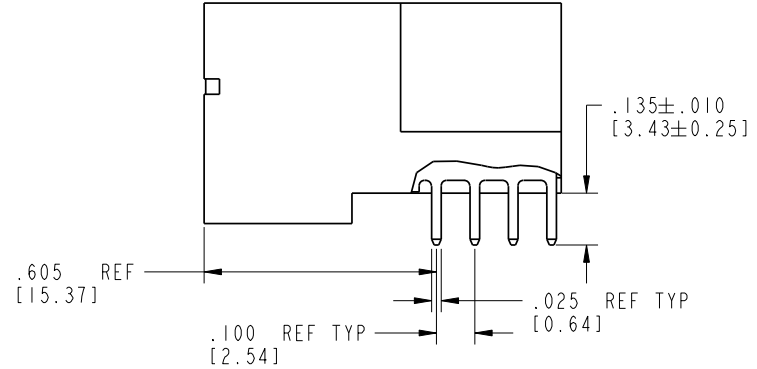


PRODUCT NUMBER

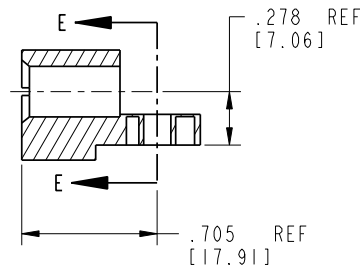
51730-124
NOTE ③



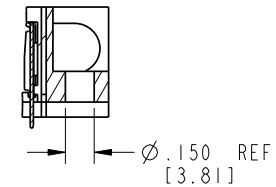
BROKEN-OUT SECTION A-A
SCALE 2:1



BROKEN-OUT SECTION B-B
SCALE 2:1



SECTION C-C



PARTIAL SECTION E-E

mat'l code		SEE NOTE 2		tolerances unless otherwise specified		CUSTOMER		FCI	
lir	ecn no.	dr	date	linear	.XX±.01/0.X±0.3	COPY		www.fciconnect.com	
A				projection	.XX±.005/0.XX±0.13	INCH/MM		title 6P + 24S + 4P	
				angles	.XXX±.0020/0.XXX±0.051	1:1		RIGHT ANGLE SOLDER HEADER	
				dr	JM GUO 04/10/06	scale		product family PwrBlade code	
				engr	SLUO 04/10/06			size dwg no 213	
				chr	BEER FU 04/10/06			sheet	
				appd	JOSEPH HSIA 04/10/06			A 51730-124 2 of 4	
sheet index	revision sheet								

cage code 2856

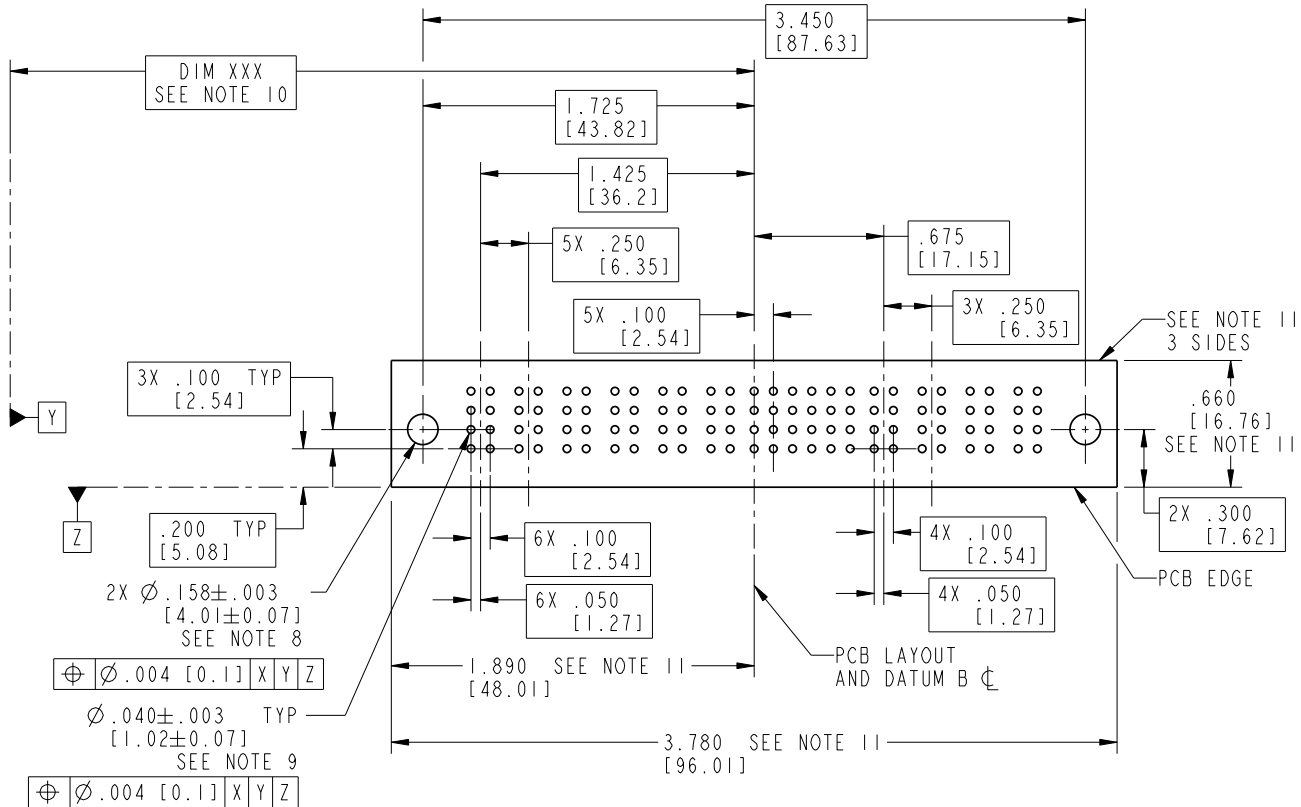
Tous droits strictement reserves. Reproduction ou communication a des tiers interdite sous quelque forme que ce soit sans autorisation écrite du propriétaire. Propriete de c FCI. Droits de reproduction FCI.

All rights strictly reserved. Reproduction or issue to third parties in any form whatever is not permitted without written authority from the proprietor. Property of FCI. Copyright FCI.



PRODUCT NUMBER

51730-124__
NOTE ③



RECOMMENDED PCB LAYOUT

mat'l code		SEE NOTE 2		tolerances unless otherwise specified		CUSTOMER		FCI	
lfr	ecn no.	dr	date	linear	.XX±.01/0.X±0.3	projection	www.fciconnect.com		
A				angles	.XXY±.005/0.XX±0.13	INCH/MM	title 6P + 24S + 4P		
				dr	.XXX±.0020/0.XXX±0.051	scale	RIGHT ANGLE SOLDER HEADER		
				enr	0°+2°	1:1	product family PwrBlade		code 213
				chr	JM GUO 04/10/06		size A	dwg no 51730-124	sheet 3 of 4
				appd	SLUO 04/10/06				
					BEER FU 04/10/06				
					JOSEPH HSIA 04/10/06				
sheet index	revision sheet								

cage code 28516

Tous droits strictement reserves. Reproduction ou communication a des tiers interdite sous quelque forme que ce soit sans autorisation écrite du propriétaire. Propriete de c FCI. Droits de reproduction FCI.



All rights strictly reserved. Reproduction or issue to third parties in any form whatever is not permitted without written authority from the proprietor. Property of FCI. Copyright FCI.

1 | 2

3 |

4

PRODUCT NUMBER

51730-124__
NOTE ③

NOTES:

1. DIMENSIONS AND TOLERANCES ARE IN ACCORDANCE WITH ASME Y14.5M, 1994 UNLESS OTHERWISE SPECIFIED.

CONNECTOR NOTES:

- ② HOUSING MATERIAL: UL 94 V-0 GLASS FILLED HIGH-TEMP THERMOPLASTIC
POWER CONTACT MATERIAL: COPPER ALLOY
SIGNAL PIN MATERIAL: COPPER ALLOY
- 3. PLATING:
51730-124, 51730-124LF, 51730-124GLF PLATING SPEC. WAS SHOWN IN THE PRINT OF 10064183.
- ④ MANUFACTURER'S NAME, P/N, AND DATE CODE TO APPEAR ON THIS SURFACE.
- 5. PRODUCT SPECIFICATION GS-12-149.
APPLICATION SPECIFICATION BUS-20-067.
- 6. PACKAGED IN TRAYS.

PCB NOTES:

- 7. ALL HOLE DIAMETERS ARE FINISHED HOLE SIZE.
- ⑧ MOUNTING HOLES, WHERE APPLICABLE, ARE UNPLATED.
- ⑨ $\varnothing .0453 \pm .0010$ [1.151 \pm 0.025] DRILLED HOLES PLATED WITH .0003 [0.008] MIN SnPb OVER .001 [0.03] TO .003 [0.08] Cu PLATING TO ACHIEVE $\varnothing .040 \pm .003$ [1.02 \pm .07] HOLE.
- ⑩ "DIM XXX" TO BE DETERMINED BY THE CUSTOMER.
- ⑪ CONNECTOR KEEP-OUT ZONE.

A

A

B

B

mol'l code		SEE NOTE 2		tolerances unless otherwise specified		CUSTOMER		FCI	
lir	ecn no.	dr	date	linear	.XX±.01/0.X±0.3	COPY		www.fciconnect.com	
A				linear	.XXX±.005/0.XX±0.13	projection		title 6P + 24S + 4P	
				angles	.XXXX±.0020/0.XXX±0.051	INCH/MM		RIGHT ANGLE SOLDER HEADER	
				dr	JM GUO 04/10/06	scale		product family PwrBlade code	
				engr	SLUO 04/10/06	1:1		size dwg no 213	
				chr	BEER FU 04/10/06			sheet 4 of 4	
				appd	JOSEPH HSIA 04/10/06			A 51730-124	
sheet index	revision sheet								

1 | 2

Pro/E

PDM: Rev: A

STAT US: Released

Printed: Dec 20, 2010