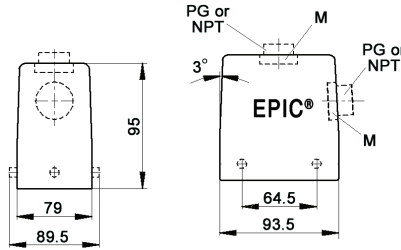


## EPIC® HA 48 standard hood

Hood with double lever bolts



all dimensions are in mm

**Technical data**

**IP Protection class:** NEMA 4, NEMA 12  
IP65

**Complete the installation**

HA dust covers page 429

**Approvals**

**PG**

| PG hood           |             | SKINTOP® gland |          |
|-------------------|-------------|----------------|----------|
| size              | part number | plastic        | metal    |
| <b>Top entry</b>  |             |                |          |
| PG 29             | 106318      | 53015060       | 52015760 |
| <b>Side entry</b> |             |                |          |
| PG 29             | 106308      | 53015060       | 52015760 |

PG hood provided with EPIC® SM/SP gland

**NPT**

| NPT hood          |             | SKINTOP® gland |          |
|-------------------|-------------|----------------|----------|
| size              | part number | plastic        | metal    |
| <b>Top entry</b>  |             |                |          |
| 1"                | 106318NP    | S1101          | 53112044 |
| <b>Side entry</b> |             |                |          |
| 1"                | 106308NP    | S1101          | 53112044 |

NPT hood provided with NPT fitting

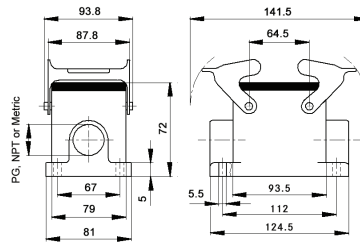
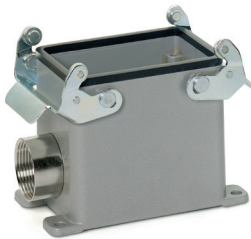
**metric**

| Metric hood*      |             | SKINTOP® gland |          |
|-------------------|-------------|----------------|----------|
| size              | part number | plastic        | metal    |
| <b>Top entry</b>  |             |                |          |
| M32               | 19631800    | 53111040       | 53112040 |
| M40               | 19636600    | 53111050       | 53112050 |
| <b>Side entry</b> |             |                |          |
| M32               | 19630800    | 53111040       | 53112040 |
| M40               | 19635600    | 53111050       | 53112050 |

\* Metric hoods do not come with a neck

## EPIC® HA 48 surface mount base

Surface mount base with double levers



all dimensions are in mm

**Technical data**

**IP Protection class:** NEMA 4, NEMA 12  
IP65

**Complete the installation**

HA dust covers page 429

**Approvals**

**PG**

| PG base          |             | SKINTOP® gland |          |
|------------------|-------------|----------------|----------|
| size             | part number | plastic        | metal    |
| <b>One entry</b> |             |                |          |
| PG 29            | 106338      | 53015060       | 52015760 |

PG base provided with EPIC® SM/SP gland

**NPT**

| NPT base         |             | SKINTOP® gland |          |
|------------------|-------------|----------------|----------|
| size             | part number | plastic        | metal    |
| <b>One entry</b> |             |                |          |
| 1"               | 106338NP    | S1101          | 53112044 |

NPT base provided with NPT fitting

**metric**

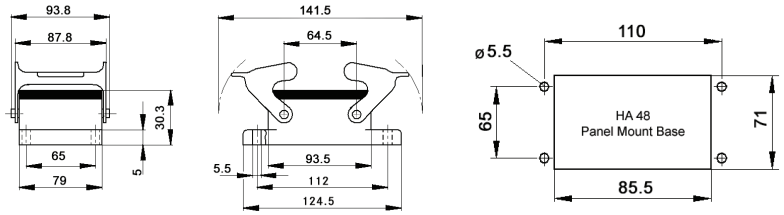
| Metric base*       |             | SKINTOP® gland |          |
|--------------------|-------------|----------------|----------|
| size               | part number | plastic        | metal    |
| <b>One entry</b>   |             |                |          |
| M32                | 19633800    | 53111040       | 53112040 |
| M40                | 19638600    | 53111050       | 53112050 |
| <b>Two entries</b> |             |                |          |
| M40                | 19639600    | 53111050       | 53112050 |

\* Metric bases do not come with a neck

If not otherwise specified, all values relating to the product are nominal values.  
Photographs are not to scale and are not true representations of the products in question.

# EPIC® HA 48 panel mount base

Panel mount base with double levers




all dimensions are in mm

**Technical data**

**IP Protection class:** NEMA 4, NEMA 12  
IP65

**Complete the installation**

 HA dust covers  
page 429

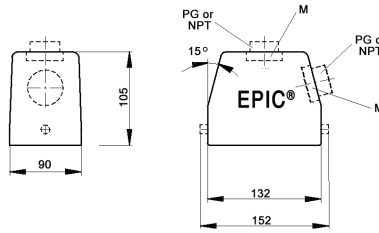
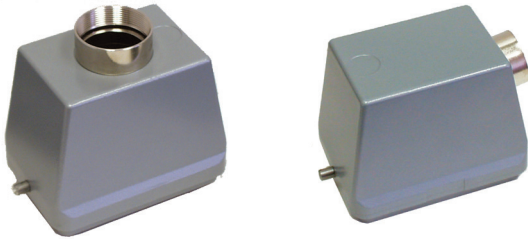
**Approvals**



| Dust cover included | Part number |
|---------------------|-------------|
| no                  | 106255C0    |

# EPIC® HA 64 standard hood

Hood with single lever bolts




all dimensions are in mm

**Technical data**

**IP Protection class:** NEMA 4, NEMA 12  
IP65

**Complete the installation**

 HA dust covers  
page 429

**Approvals**



**PG**

| size              | PG hood     |          | SKINTOP® gland |          |
|-------------------|-------------|----------|----------------|----------|
|                   | part number | plastic  | plastic        | metal    |
| <b>Top entry</b>  |             |          |                |          |
| PG 29             | 101550HA    | 53015060 | 53015060       | 52015760 |
| PG 36             | 101560HA    | 53015070 | 53015070       | 52015765 |
| PG 42             | 101570HA    | 53015080 | 53015080       | 52015766 |
| <b>Side entry</b> |             |          |                |          |
| PG 29             | 101580HA    | 53015060 | 53015060       | 52015760 |
| PG 36             | 101590HA    | 53015070 | 53015070       | 52015765 |
| PG 42             | 101600HA    | 53015080 | 53015080       | 52015766 |

PG hood provided with EPIC® SM/SP gland

**NPT**

| size              | NPT hood    |         | SKINTOP® gland |          |
|-------------------|-------------|---------|----------------|----------|
|                   | part number | plastic | plastic        | metal    |
| <b>Top entry</b>  |             |         |                |          |
| 1"                | 101550NP-HA | S 1101  | 53112044       | 53112044 |
| 1 1/4"            | 101560NP-HA | —       | 53112054       | 53112054 |
| <b>Side entry</b> |             |         |                |          |
| 1"                | 101580NP-HA | S 1101  | 53112044       | 53112044 |
| 1 1/4"            | 101590NP-HA | —       | 53112054       | 53112054 |

NPT hood provided with NPT fitting

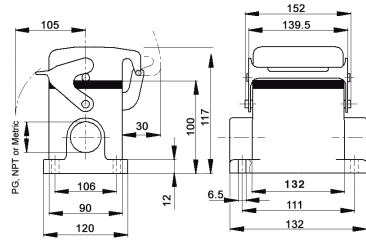
**metric**

| size              | Metric hood* |          | SKINTOP® gland |          |
|-------------------|--------------|----------|----------------|----------|
|                   | part number  | plastic  | plastic        | metal    |
| <b>Top entry</b>  |              |          |                |          |
| M32               | 191550HA     | 53111040 | 53111040       | 53112040 |
| M40               | 191560HA     | 53111050 | 53111050       | 53112050 |
| M50               | 191570HA     | 53111060 | 53111060       | 53112060 |
| <b>Side entry</b> |              |          |                |          |
| M32               | 191580HA     | 53111040 | 53111040       | 53112040 |
| M40               | 191590HA     | 53111050 | 53111050       | 53112050 |
| M50               | 191600HA     | 53111060 | 53111060       | 53112060 |

\* Metric hoods do not come with a neck

# EPIC® HA 64 surface mount base

## Surface mount base with single lever



all dimensions are in mm

**Technical data**

**IP Protection class:** NEMA 4, NEMA 12  
IP65

**Complete the installation**

HA dust covers page 429

**Approvals**

**PG**

| PG base size       | PG base part number | Dust cover | SKINTOP® gland |          |
|--------------------|---------------------|------------|----------------|----------|
|                    |                     |            | plastic        | metal    |
| <b>One entry</b>   |                     |            |                |          |
| 29                 | 101650HA            | no         | 53015060       | 52015760 |
| 29                 | 101670HA            | yes        | 53015060       | 52015760 |
| 36                 | 101651HA            | no         | 53015070       | 52105765 |
| 36                 | 101671HA            | yes        | 53015070       | 52015765 |
| <b>Two entries</b> |                     |            |                |          |
| 29                 | 101660HA            | no         | 53015060       | 52015760 |
| 29                 | 101680HA            | yes        | 53015060       | 52015760 |
| 36                 | 101661HA            | no         | 53015070       | 52105765 |
| 36                 | 101681HA            | yes        | 53015070       | 52015765 |

PG base provided with EPIC® SM/SP gland

**NPT**

| NPT base size      | NPT base part number | Dust cover | SKINTOP® gland |          |
|--------------------|----------------------|------------|----------------|----------|
|                    |                      |            | plastic        | metal    |
| <b>One entry</b>   |                      |            |                |          |
| 1"                 | 101650NP-HA          | no         | S 1101         | 53112044 |
| 1"                 | 101670NP-HA          | yes        | S 1101         | 53112044 |
| 1¼"                | 101651NP-HA          | no         | —              | 53112054 |
| 1¼"                | 101671NP-HA          | yes        | —              | 53112054 |
| <b>Two entries</b> |                      |            |                |          |
| 1"                 | 101660NP-HA          | no         | S 1101         | 53112044 |
| 1"                 | 101680NP-HA          | yes        | S 1101         | 53112044 |
| 1¼"                | 101661NP-HA          | no         | —              | 53112054 |
| 1¼"                | 101681NP-HA          | yes        | —              | 53112054 |

NPT base provided with NPT fitting

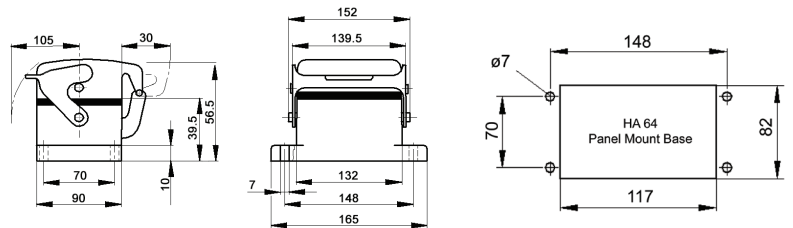
**metric**

| Metric base* size  | Metric base* part number | Dust cover | SKINTOP® gland |          |
|--------------------|--------------------------|------------|----------------|----------|
|                    |                          |            | plastic        | metal    |
| <b>One entry</b>   |                          |            |                |          |
| 32                 | 191650HA                 | no         | 53111040       | 53112040 |
| 32                 | 191670HA                 | yes        | 53111040       | 53112040 |
| 40                 | 191651HA                 | no         | 53111050       | 53112050 |
| 40                 | 191671HA                 | yes        | 53111050       | 53112050 |
| <b>Two entries</b> |                          |            |                |          |
| 32                 | 191660HA                 | no         | 53111040       | 53112040 |
| 32                 | 191680HA                 | yes        | 53111040       | 53112040 |
| 40                 | 191661HA                 | no         | 53111050       | 53112050 |
| 40                 | 191681HA                 | yes        | 53111050       | 53112050 |

\* Metric bases do not come with a neck

# EPIC® HA 64 panel mount base

## Panel mount base with single lever



all dimensions are in mm

**Technical data**

**IP Protection class:** NEMA 4, NEMA 12  
IP65

**Complete the installation**

HA dust covers page 429

**Approvals**

| Dust cover included | Hardware                           | Part number |
|---------------------|------------------------------------|-------------|
| no                  | —                                  | 101610HA    |
| yes                 | dust cover bolts & hold down screw | 101525HA    |
| yes                 | hold down screw                    | 101520HA    |

If not otherwise specified, all values relating to the product are nominal values. Photographs are not to scale and are not true representations of the products in question.