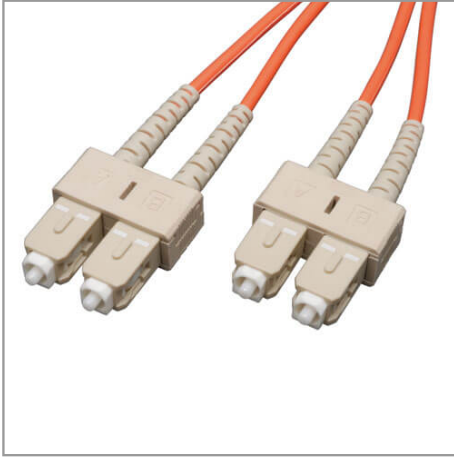


Duplex Multimode 62.5/125 Fiber Patch Cable (SC/SC), 0.3M (1 ft.)

MODEL NUMBER: N306-001



Highlights

- Premium PVC 62.5/125µm multimode patch cables
- Attenuation loss meets or exceeds the latest industry standards

System Requirements

- Any fiber optic hardware or NIC card requiring multimode duplex cable with SC/SC connectors

Package Includes

- 1-ft. (0.31 m) duplex MMF cable SC/SC 62.5/125 fiber

Description

Tripp Lite's 1-ft. (0.31 m) multimode duplex fiber optic SC/SC patch cable is manufactured from 62.5/125 zipcord fiber. The cable has SC connectors on each end, a PVC jacket and is FDDI and OFNR rated. duplex multimode fiber is most commonly used in LAN applications.

Features

- Manufactured from 62.5/125 duplex (zipcord) fiber
- PVC jacket
- Length: 1-ft. (0.31 m) Connectors: 2 SC connectors on each end
- Insertion loss testing performed on every connector (0.2db typical) and provided with cable
- Beveled edge on ends of glass makes insertion of plug a breeze
- Fiber made from glass (not a polymer)
- Fiber optic distributed data interface (FDDI) rated
- OFNR (riser rated)

Specifications

| OVERVIEW | |
|--------------------|--------------|
| UPC Code | 037332135179 |
| Technology | Multimode |
| Optical Mode | OM1 |
| PHYSICAL | |
| Cable Jacket Color | Orange |

| | |
|--------------------------------------|---------------------------------|
| Connector Color | White |
| Cable Jacket Material | LSZH |
| Cable Jacket Rating | OFNR |
| Clad Diameter (microns) | 125 |
| Core Diameter (microns) | 62.5 |
| Number of Fibers | 2 |
| Cable Length (ft.) | 1 |
| Cable Length (m) | 0.30 |
| Cable Length (in.) | 12 |
| Minimum Bend Radius | 20 mm (Dynamic); 10 mm (Static) |
| Shipping Dimensions (hwd / in.) | 9.00 x 7.00 x 0.50 |
| Shipping Dimensions (hwd / cm) | 22.86 x 17.78 x 1.27 |
| Shipping Weight (lbs.) | 0.04 |
| Shipping Weight (kg) | 0.02 |
| Fiber Cable Length | 0.3M (1 ft) |
| ENVIRONMENTAL | |
| Operating Temperature Range | -4° to 140°F (-20° to 60°C) |
| Storage Temperature Range | -4° to 140°F (-20° to 60°C) |
| Operating Humidity Range | 5% to 85% RH, Non-Condensing |
| Storage Humidity Range | 35% to 65% RH, Non-Condensing |
| COMMUNICATIONS | |
| Network Compatibility | 1 Gbps (Gigabit); 10 Gbps |
| Attenuation @ 850NM | 3.0 dB/km |
| Insertion Loss | 0.20 dB |
| CONNECTIONS | |
| Side A - Connector 1 | SC DUPLEX (MALE) |
| Side B - Connector 1 | SC DUPLEX (MALE) |
| Endface Polish | PC |
| FEATURES & SPECIFICATIONS | |
| Push/Pull Tabs | No |
| Breakout | No |
| Trunk | No |

| STANDARDS & COMPLIANCE | |
|-------------------------------------|---------------------------|
| Product Compliance | RoHS; REACH |
| WARRANTY & SUPPORT | |
| Product Warranty Period (Worldwide) | Lifetime limited warranty |