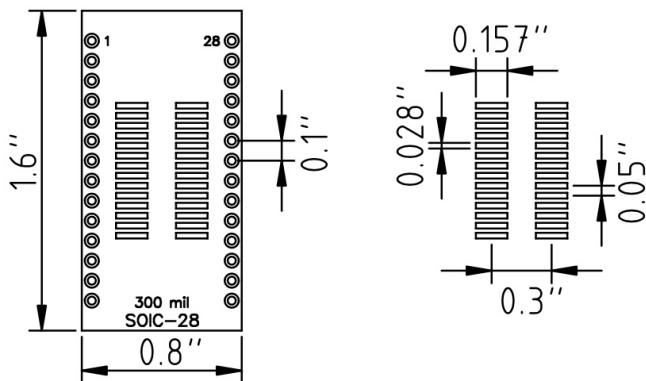
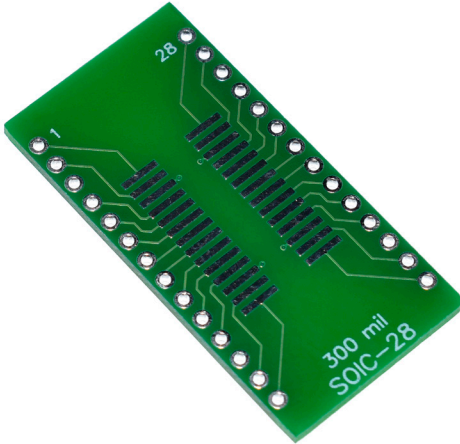


SOIC-28, SOP-28, SMD to DIP Adapter

MPN: ST-126

Description:

These boards allow SOIC-28 and SOP-28 300mil SMD components to be used on a breadboard or perfboard for prototyping. With this board you can easily work with surface mount components in a reconfigurable way.



Key Features:

- Fits SOIC-28 and SOP-28 300mil footprint parts
- Standard 0.1" pin pitch for use with breadboards and protoboards
- Allows surface mount parts to be tested in an easy, re-configurable way
- High quality double sided PCB can withstand re-work