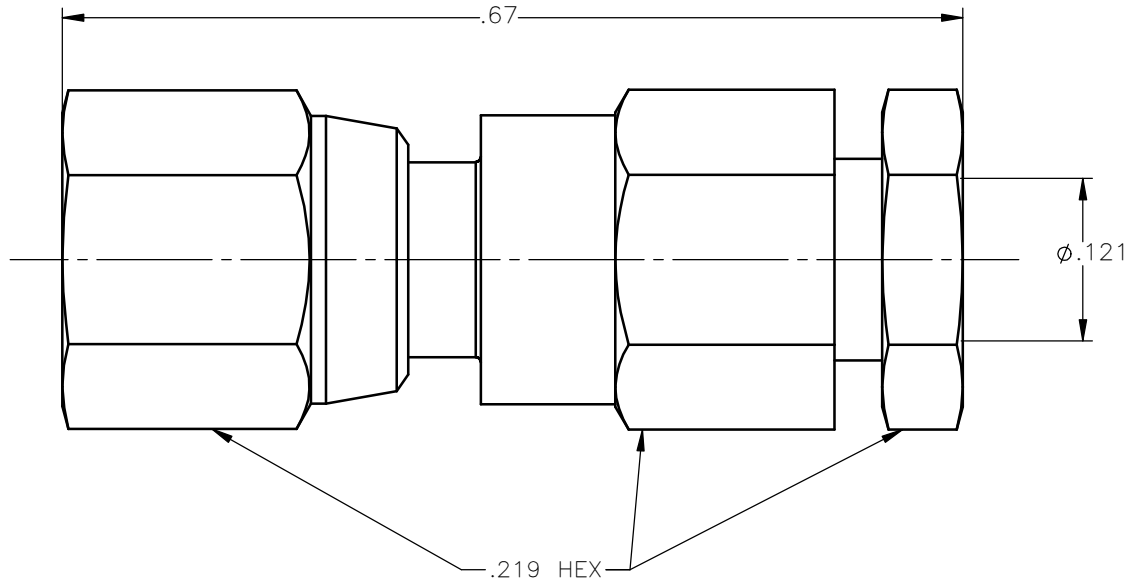


REVISIONS			
REV.	DESCRIPTION	DATE	APPROVED
A	INITIAL RELEASE	04/10/13	J.S.





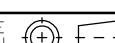
NOTES:

MATERIALS:

- CONTACT = BERYLLIUM COPPER PER ASTM B196, ALLOY C17300, TEMPER TD04.
- INSULATOR = VIRGIN WHITE TEFLON PER ASTM D1710, GRADE 1, TYPE I, CLASS "B".
- ALL OTHER METAL PARTS = BRASS PER ASTM B16, ALLOY C36000, TEMPER H02.

FINISHES:

- CONTACT = GOLD PLATE PER MIL-G-45204, TYPE II, CLASS 1, GRADE C, OVER .00010 TO .00020 STRESS FREE SULFAMATE NICKEL PER QQ-N-290.
- ALL OTHER METAL PARTS = GOLD PLATE PER MIL-G-45204, TYPE II, CLASS 0, GRADE C, OVER .00010 TO .00020 COPPER STRIKE PER MIL-C-14550.

UNLESS OTHERWISE SPECIFIED DIMENSIONS ARE IN INCHES TOLERANCES ON	DWN:	DATE	 Property of Radiall This document cannot be reproduced or communicated to a third party without prior written permission of RADIALL.	
	J.S.	04/10/13		
DECIMAL	ANGLE	CHKD:	DATE	SMC STRAIGHT FEMALE PLUG CLAMP TYPE FOR RG-316 & SIMILAR CABLES
		D.N.	04/10/13	
		APVD:	DATE	
REFERENCE:	MATERIALS & FINISHES:	J.M.	04/10/13	SIZE: A FSCM NO.: 19505 DWG NO.: 1002-1551-003 REV: A
ORIGINATED: J.S. DATE: 04/10/13	SEE NOTES	SCALE: 7:1		THIRD ANGLE PROJECTION  SHEET 1 OF 1

1002-1551-003