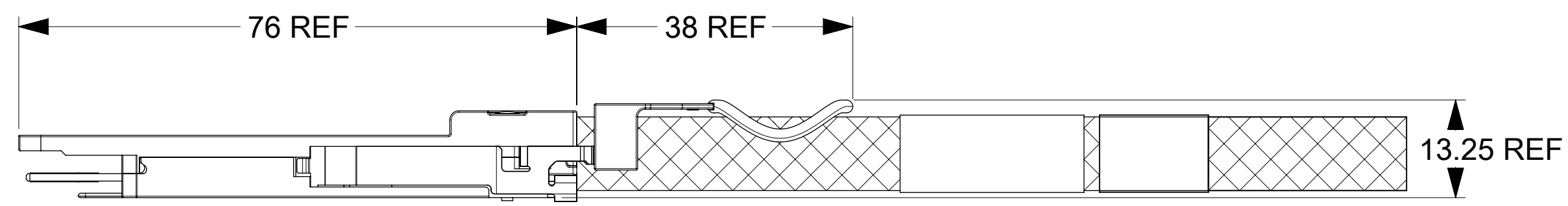
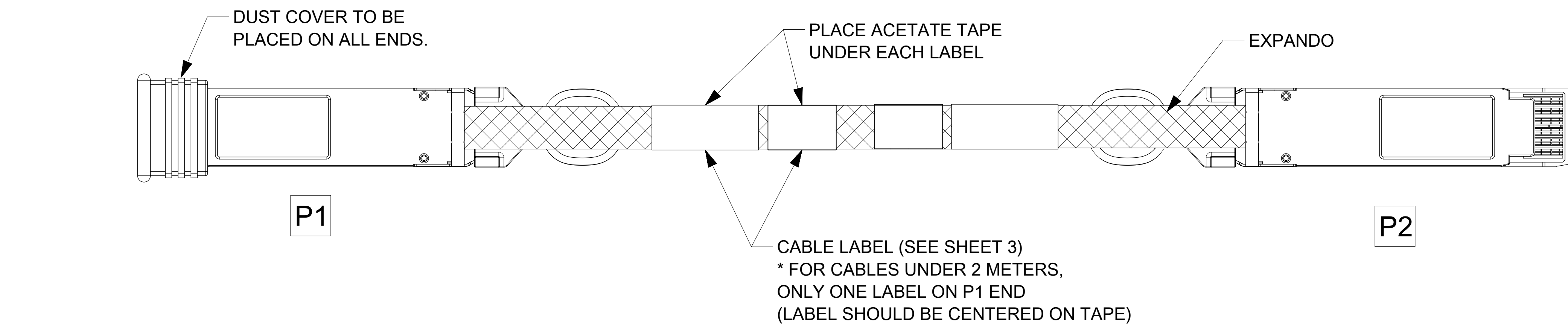


PCB VIEWING HOLES
 DETAIL A
 SCALE 5:1

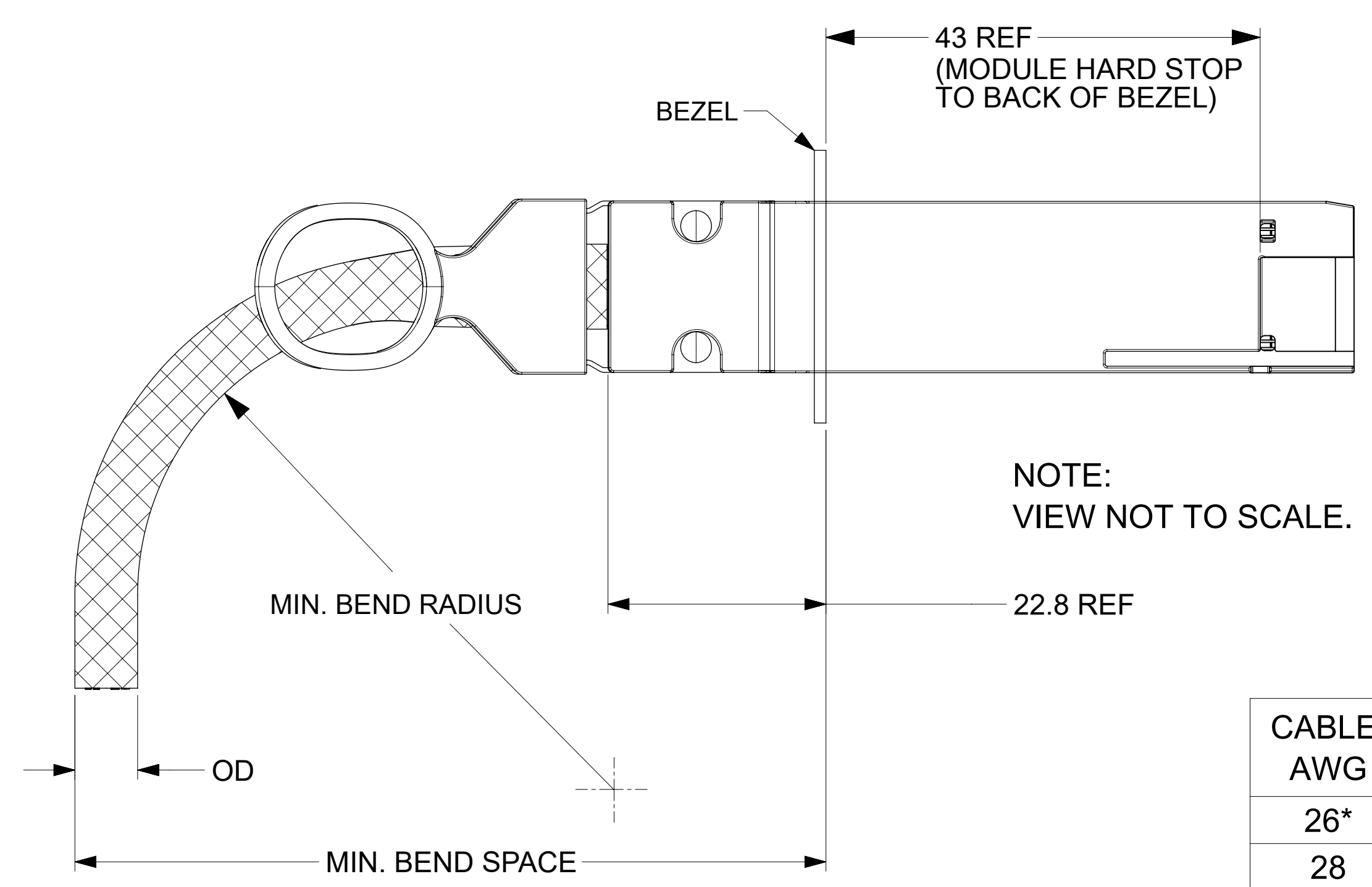


- NOTES:**
- CABLE LENGTH DEPENDS ON WIRE GAUGE, DATA RATE, AND HOST BOARD DRIVER CAPABILITIES
 - MATERIALS:**
 - BACKSHELLS - ZINC DIE CAST WITH BRIGHT NICKEL PLATING
 - DELATCH - STAINLESS STEEL WITH OVERMOLDED NYLON
 - RIVETS - STAINLESS STEEL
 - IMPEDANCE - 100 OHMS DIFFERENTIAL
 - BUNDLED CABLE RATED UL VW-1 FLAME PER UL STYLE 21479
 - EEPROM MAP AVAILABLE UPON REQUEST
 - RoHS COMPLIANT, NO EXEMPTIONS

| | | | | | | |
|--|---|--|--|--|--|---|
| FUNCTIONAL SYMBOLS $F_A = 0$ $F_C = 0$ $F_P = 0$ | DIMENSION UNITS: mm SCALE: 2:1 | | CURRENT REV DESC: SHEET4 : ADDED LENGTH 2M 30AWG IN P/N TABLE | | | |
| | GENERAL TOLERANCES (UNLESS SPECIFIED) | | EC NO: 677116 DRWN: ADITHK 2021/05/24 CHK'D: VITTAD 2021/09/09 APPR: MGARRISON 2021/09/10 | | | PRODUCT CUSTOMER DRAWING |
| | ANGULAR TOL $\pm 5.0^\circ$ | | INITIAL REVISION: DRWN: TPRATT 2016/11/08 APPR: CHIRSCHY 2016/11/10 | | | DOCUMENT NUMBER: 2015911005 DOC TYPE: PSD DOC PART: 000 REVISION: U |
| | 4 PLACES \pm 3 PLACES \pm 2 PLACES ± 0.13 1 PLACE ± 0.25 0 PLACES \pm | | DRAFT WHERE APPLICABLE MUST REMAIN WITHIN DIMENSIONS | | | MATERIAL NUMBER: SEE P/N TABLE CUSTOMER: GENERAL MARKET SHEET NUMBER: 1 OF 4 |

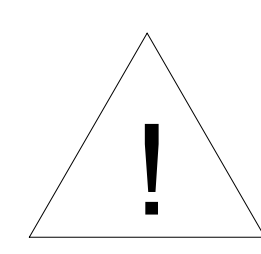
| | | | | |
|-----------------|----|--------------|------------|----------|
| DOCUMENT STATUS | P1 | RELEASE DATE | 2021/09/10 | 01:01:00 |
|-----------------|----|--------------|------------|----------|

CABLE BEND RADIUS

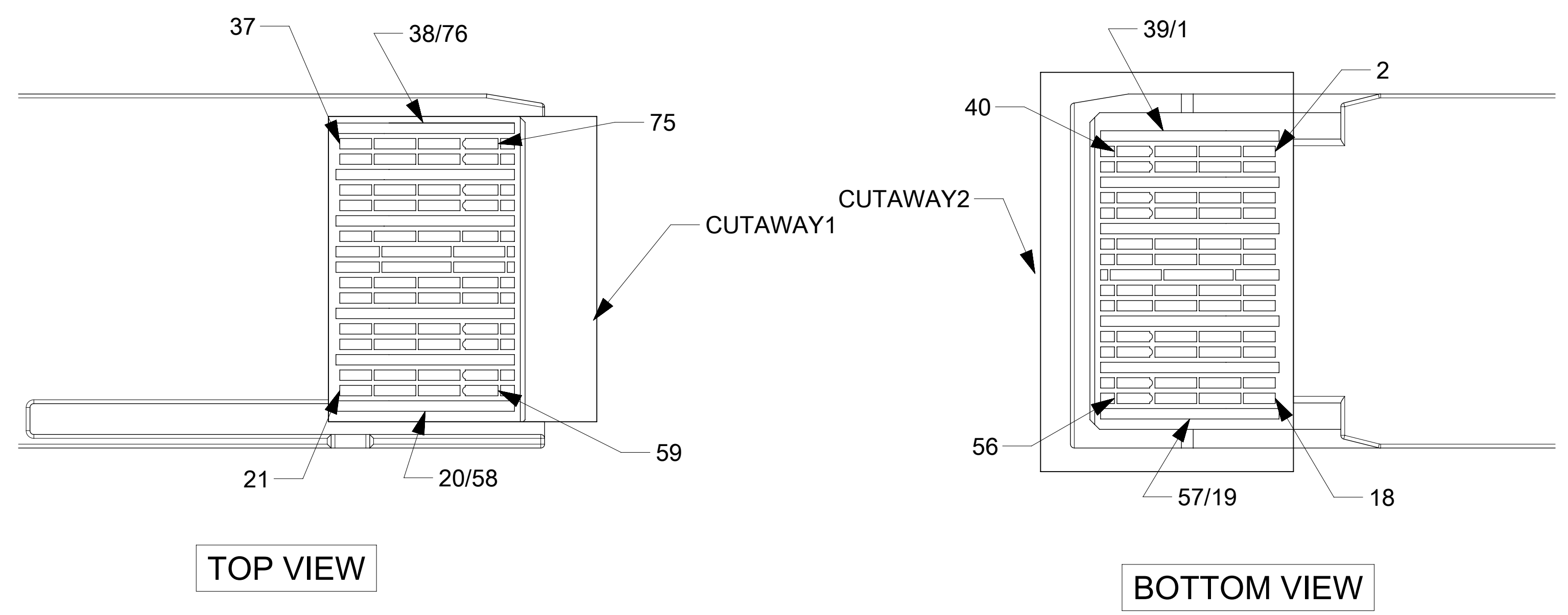


NOTE:
VIEW NOT TO SCALE.

| CABLE AWG | OD (mm) | MIN BEND RADIUS (mm) | MIN BEND SPACE (mm) |
|-----------|---------|----------------------|---------------------|
| 26* | (13) | (65) | (101) |
| 28 | (11) | (55) | (89) |
| 30 | (9.4) | (45) | (77) |



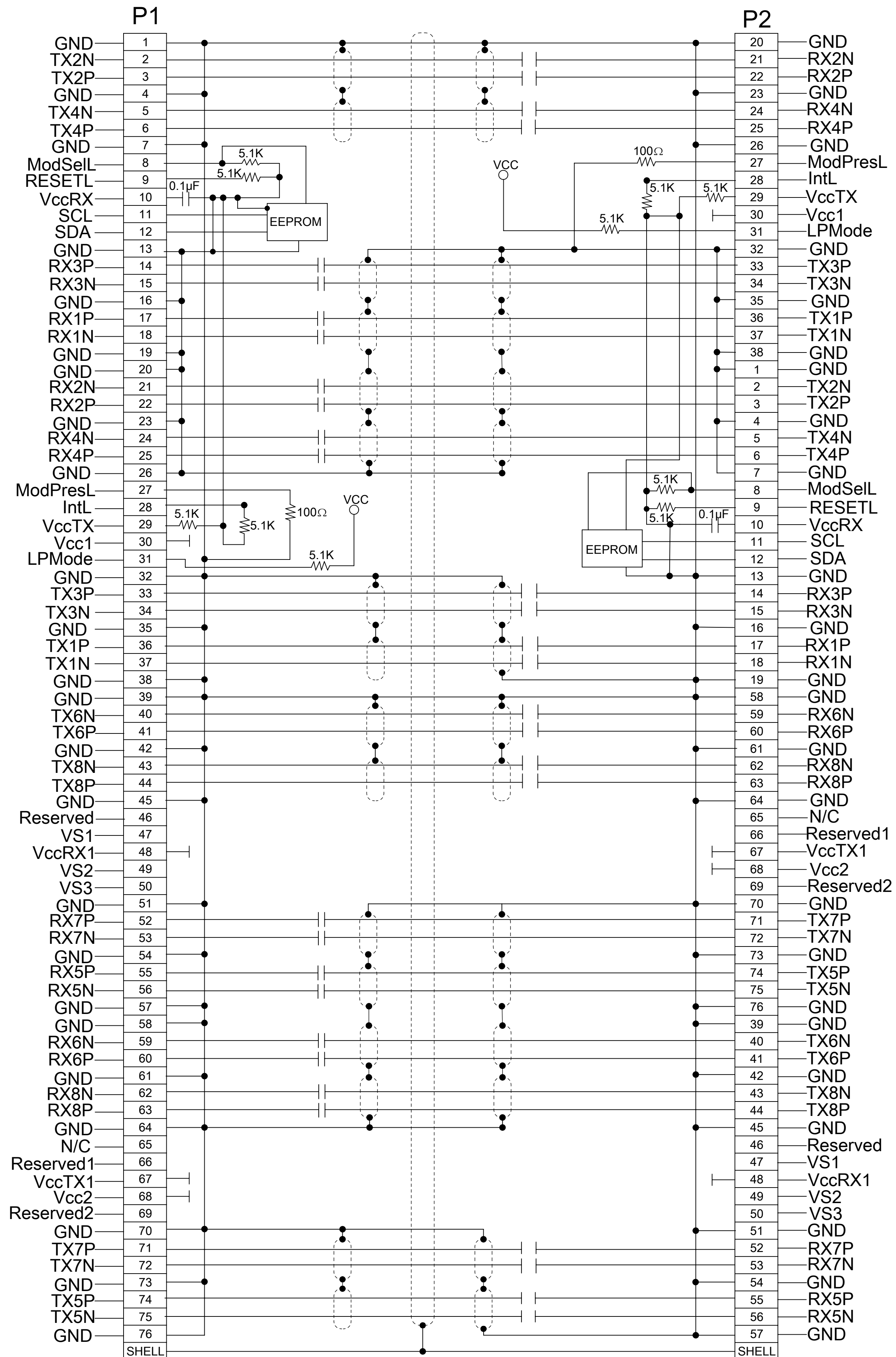
*MINIMUM BEND RADIUS PENDING QUALIFICATION. NUMBERS ABOVE ARE ESTIMATES AND SUBJECT TO CHANGE.



- NOTES:
- DC BLOCKING CAPS ON RECEIVE SIDE ONLY
 - CABLE COILED AND PACKAGED IN BEST FIT ESD BAG AND SEALED WITH ESD LABEL FOR SHIPPING

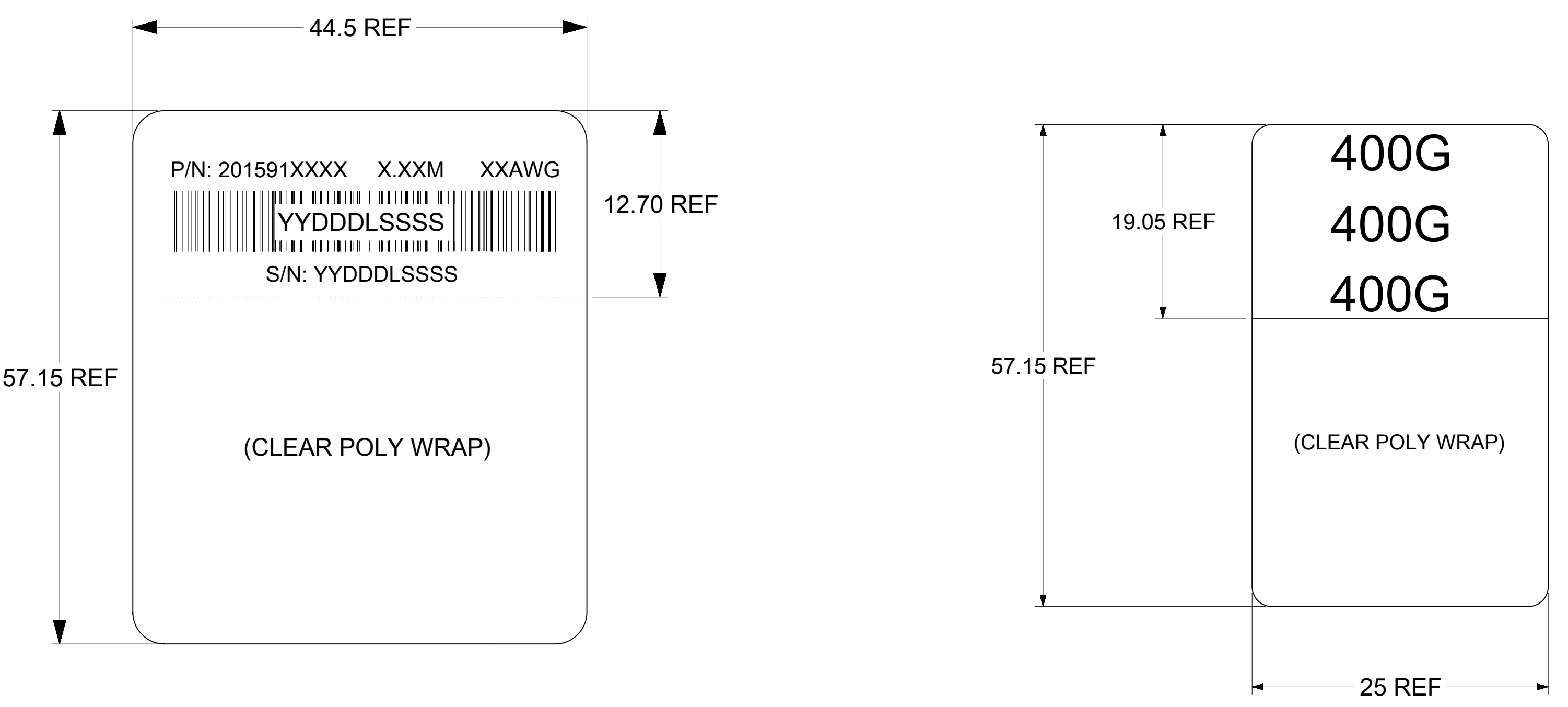
| | | | | | | |
|--|---|--|--|--|--|---|
| FUNCTIONAL SYMBOLS $F_A = 0$ $F_C = 0$ $F_P = 0$ | DIMENSION UNITS: mm SCALE: 20:1 | | CURRENT REV DESC: SHEET4 : ADDED LENGTH 2M 30AWG IN P/N TABLE | | | |
| | GENERAL TOLERANCES (UNLESS SPECIFIED) | | EC NO: 677116 DRWN: ADITHK 2021/05/24 CHK'D: VITTAD 2021/09/09 APPR: MGARRISON 2021/09/10 | | | PRODUCT CUSTOMER DRAWING |
| | ANGULAR TOL $\pm 5.0^\circ$ | | INITIAL REVISION: DRWN: TPRATT 2016/11/08 APPR: CHIRSCHY 2016/11/10 | | | DOCUMENT NUMBER: 2015911005 DOC TYPE: PSD DOC PART: 000 REVISION: U |
| | 4 PLACES \pm 3 PLACES \pm 2 PLACES ± 0.13 1 PLACE ± 0.25 0 PLACES \pm | | DRAFT WHERE APPLICABLE MUST REMAIN WITHIN DIMENSIONS | | | DRAWING: D-SIZE SERIES: 201591 MATERIAL NUMBER: SEE P/N TABLE CUSTOMER: GENERAL MARKET SHEET NUMBER: 2 OF 4 |

WIRING DIAGRAM



| | | | | | | | | |
|---|--|---------------------|--|--|-------------------------|--------------------------------------|----------------------------|-------------------------------|
| FUNCTIONAL SYMBOLS $\nabla_A = 0$ $\nabla_C = 0$ $\nabla_P = 0$ | DIMENSION UNITS mm | SCALE 1:1 | CURRENT REV DESC: SHEET4 : ADDED LENGTH 2M 30AWG IN P/N TABLE | | | | | |
| | GENERAL TOLERANCES (UNLESS SPECIFIED) ANGULAR TOL $\pm 5.0^\circ$ | | | <div style="font-size: 24px; font-weight: bold; margin-bottom: 10px;">molex</div> QSFP-DD TO QSFP-DD 56G PASSIVE CABLE ASY | | | | |
| DIVISIONAL SYMBOLS 4 PLACES \pm 3 PLACES \pm 2 PLACES ± 0.13 1 PLACE ± 0.25 0 PLACES \pm | | | EC NO: 677116 DRWN: ADITHK 2021/05/24 CHK'D: VITTAD 2021/09/09 APPR: MGARRISON 2021/09/10 | | | | | |
| DRAFT WHERE APPLICABLE MUST REMAIN WITHIN DIMENSIONS | | | THIRD ANGLE PROJECTION | DRAWING D-SIZE | SERIES 201591 | MATERIAL NUMBER 2015911005 | CUSTOMER GENERAL MARKET | SHEET NUMBER 3 OF 4 |

LABEL DETAILS



P/N: 201591XXXX - MOLEX PART NUMBER (SEE P/N TABLE)

X.XXM - CABLE LENGTH IN METERS (EXAMPLES - 0.5M, 1.0M, 1.5M)
SEE P/N TABLE FOR THE NUMBER OF DIGITS

XXAWG - CABLE SIZE IN AWG

S/N: YYDDLSSSS - SERIAL NUMBER
 YY = YEAR, THE LAST 2 DIGITS OF YEAR
 DDD = DAY OF THE YEAR
 L = LOCATION
 1 - USA
 2 - MEXICO
 3 - CHINA
 4 - PHILIPPINES
 SSSS = SERIAL NUMBER (0001-9999)

| MOLEX P/N | LENGTH (M) | AWG |
|-------------|-----------------|-----|
| 2015911005* | 0.5M +/- 0.05M | 30 |
| 2015911007 | 0.75M +/- 0.05M | 30 |
| 2015911010 | 1.0M +/- 0.05M | 30 |
| 2015911012 | 1.25M +/- 0.05M | 30 |
| 2015911015 | 1.5M +/- 0.08M | 30 |
| 2015911020 | 2.0M +/- 0.08M | 30 |
| 2015913005* | 0.5M +/- 0.05M | 28 |
| 2015913010 | 1.0M +/- 0.05M | 28 |
| 2015913012 | 1.25M +/- 0.05M | 28 |
| 2015913015 | 1.5M +/- 0.08M | 28 |
| 2015913017 | 1.75M +/- 0.08M | 28 |
| 2015913020 | 2.0M +/- 0.08M | 28 |
| 2015913025 | 2.5M +/- 0.08M | 28 |
| 2015913252 | 2.5M +/- 0.08M | 26 |
| 2015913027 | 2.75M +/- 0.08M | 26 |
| 2015913030 | 3.0M +/- 0.08M | 26 |

*CABLES MAY NOT MEET ALL IEEE 802.3cd 56G PAM4 PARAMETERS

| | | | | | | | |
|--|---|---|---|--------------------------------------|-----------------|----------------|--------------|
| FUNCTIONAL SYMBOLS FA = 0 FE = 0 FP = 0 DIVISIONAL SYMBOLS | THIS DRAWING CONTAINS INFORMATION THAT IS PROPRIETARY TO MOLEX ELECTRONIC TECHNOLOGIES, LLC AND SHOULD NOT BE USED WITHOUT WRITTEN PERMISSION | | CURRENT REV DESC: SHEET4 : ADDED LENGTH 2M 30AWG IN P/N TABLE | | | | |
| | DIMENSION UNITS | SCALE | GENERAL TOLERANCES (UNLESS SPECIFIED) | | | | |
| | mm | 1:1 | ANGULAR TOL ± 5.0° | | | | |
| | 4 PLACES ± | | EC NO: 677116 | | | | |
| 3 PLACES ± | | DRWN: ADITHK 2021/05/24 | | PRODUCT CUSTOMER DRAWING | | | |
| 2 PLACES ± 0.13 | | CHK'D: VITTAD 2021/09/09 | | | | | |
| 1 PLACE ± 0.25 | | APPR: MGARRISON 2021/09/10 | | DOCUMENT NUMBER 2015911005 | | | |
| 0 PLACES ± | | INITIAL REVISION: DRWN: TPRATT 2016/11/08 APPR: CHIRSCHY 2016/11/10 | | | | | |
| DRAFT WHERE APPLICABLE MUST REMAIN WITHIN DIMENSIONS | | THIRD ANGLE PROJECTION | DRAWING | SERIES | MATERIAL NUMBER | CUSTOMER | SHEET NUMBER |
| | | | D-SIZE | 201591 | SEE P/N TABLE | GENERAL MARKET | 4 OF 4 |