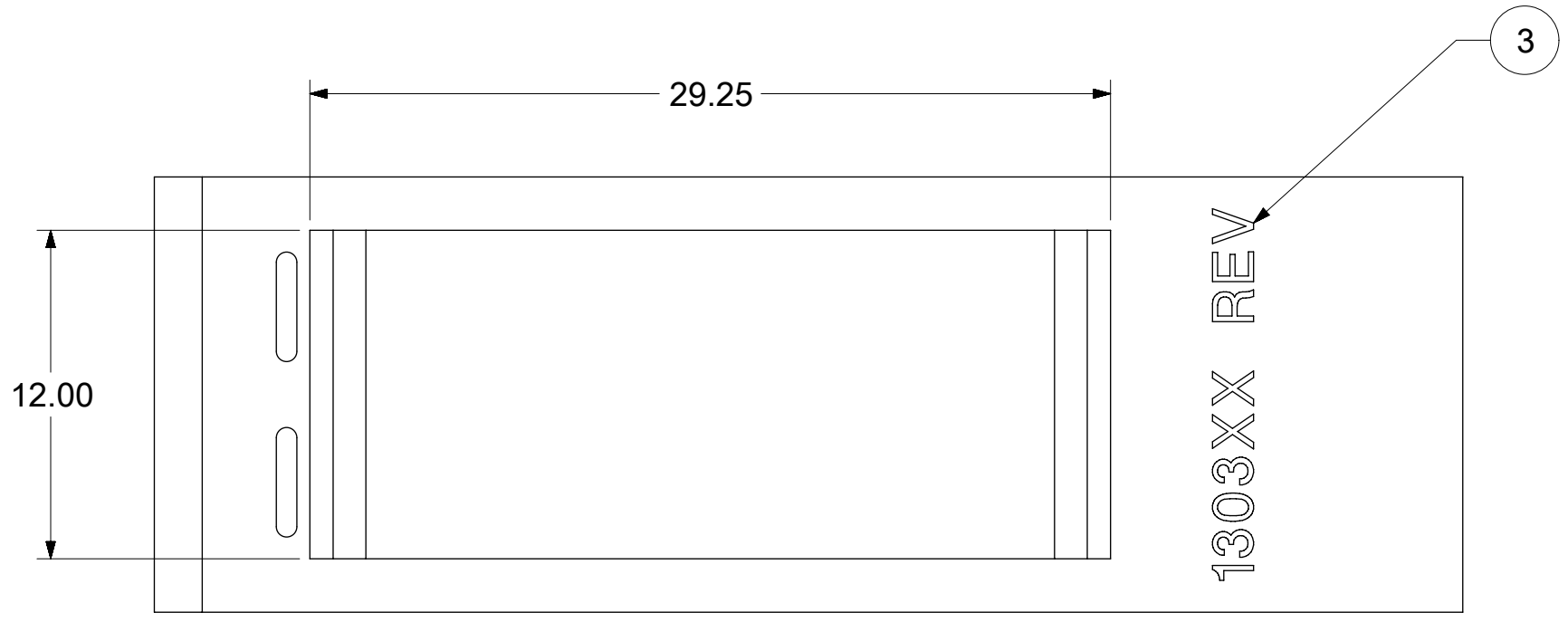
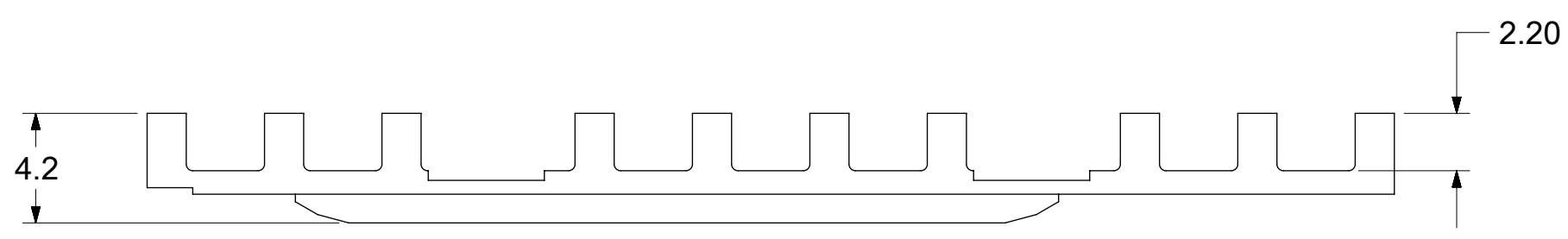
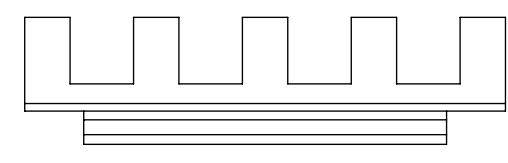
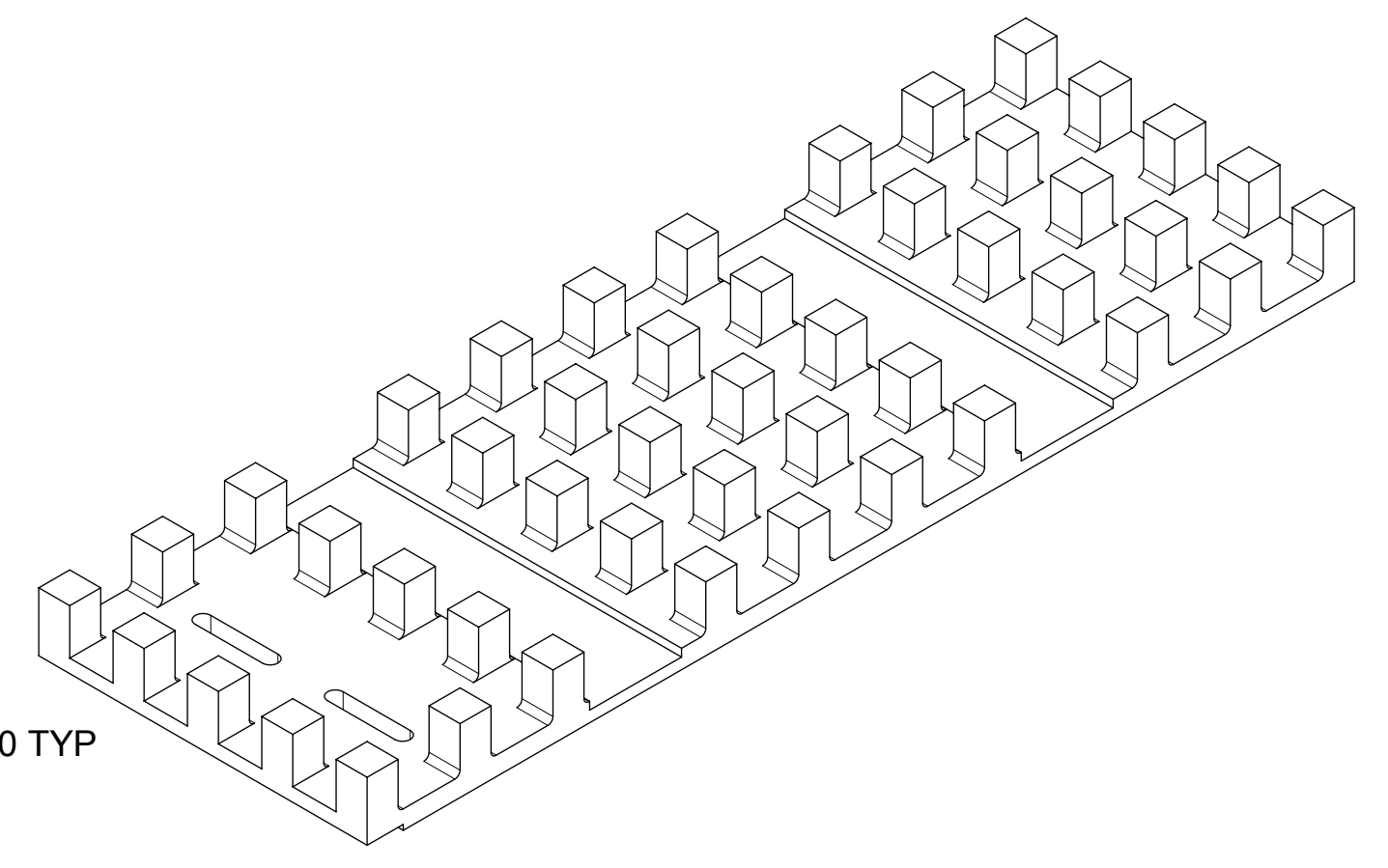
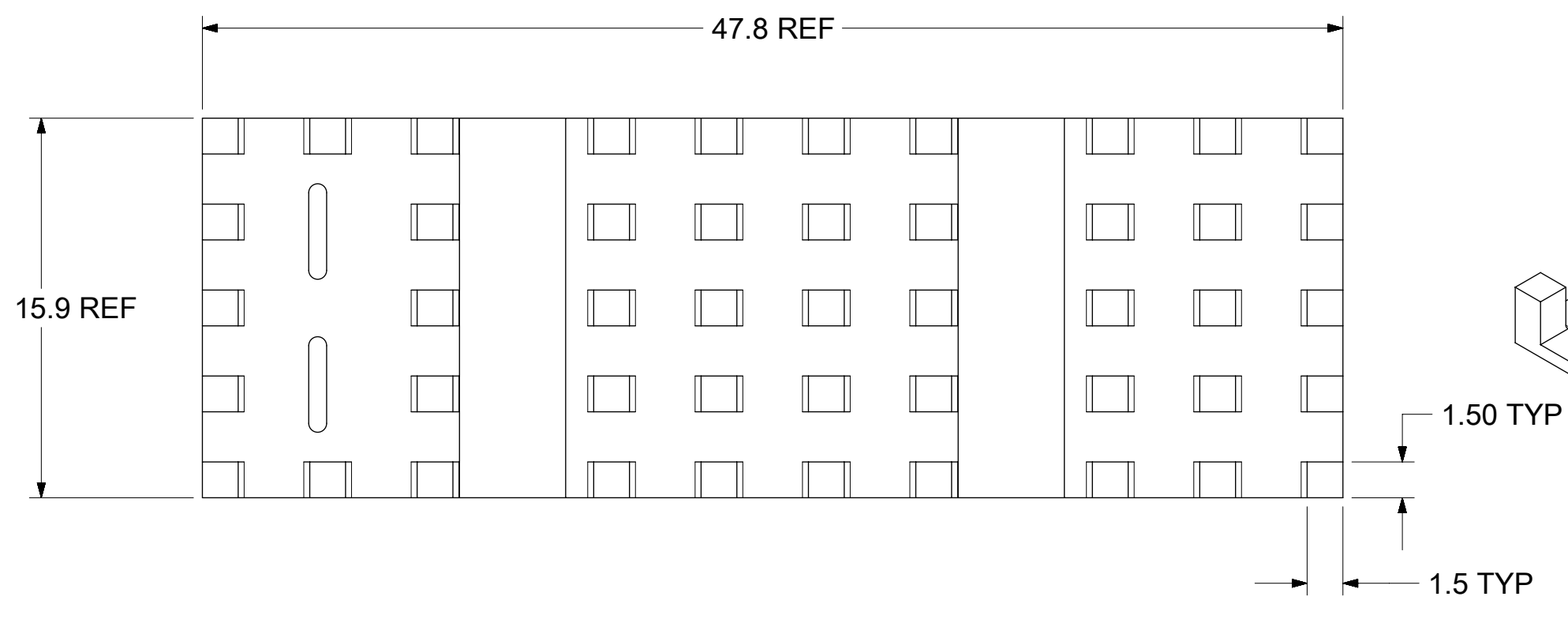


1000130338



- NOTES:
1. MATERIAL: NICKEL PLATED ALUMINUM
  2. PACKAGE: TRAY
  3. PART NUMBER (LAST SIX DIGITS) AND REV. TEXT SIZE WIDTH 1.5mm LASER ETCH OR INK JET REFER TO MODEL FOR POSITION FOR INTERNAL USE.
  4. NO RoHS EXEMPTIONS

THIS DRAWING CONTAINS INFORMATION THAT IS PROPRIETARY TO MOLEX ELECTRONIC TECHNOLOGIES, LLC AND SHOULD NOT BE USED WITHOUT WRITTEN PERMISSION												
SEE REVISION TABLE EC NO: 119796 DRWN: THSU CHKD: EWANG07 REV / APPR: RCHEN08	2017/07/25		GENERAL TOLERANCES (UNLESS SPECIFIED)		DIMENSION UNITS	SCALE						
	2017/07/25		ANGULAR TOL ± °		MM	4:1						
	2017/07/28		4 PLACES ±		DRWN BY	DATE	ZQSFP+ PCI HEAT SINK NO LIGHT PIPE					
			3 PLACES ±		THSU	2017/07/25						
			2 PLACES ± 0.13		CHKD BY	DATE	PRODUCT CUSTOMER DRAWING					
		1 PLACE ± 0.25		EWANG07	2017/07/25							
		0 PLACES ±		APPR BY	DATE	SERIES		MATERIAL NUMBER		CUSTOMER		
		DRAFT WHERE APPLICABLE MUST REMAIN WITHIN DIMENSIONS		RCHEN08	2017/07/28	100013		1000130338				
A		C		THIRD ANGLE PROJECTION		DRAWING SIZE		DOCUMENT NUMBER		DOC TYPE	DOC PART	SHEET NUMBER
				C		C		1000130338		PSD	ASY	1 OF 2

