

COLORS

BODY:  
Metallic

ACTUATOR:  
Black

SPECIFICATIONS

FUNCTION:  
1P2T ON-ON  
Non-Shorting

RATINGS:  
11A 125VAC  
5.5A 250VAC

CONTACT RESISTANCE:  
Initial: 30mΩ Max. at 50VDC

INSULATION RESISTANCE:  
500MΩ Min. at 50VDC

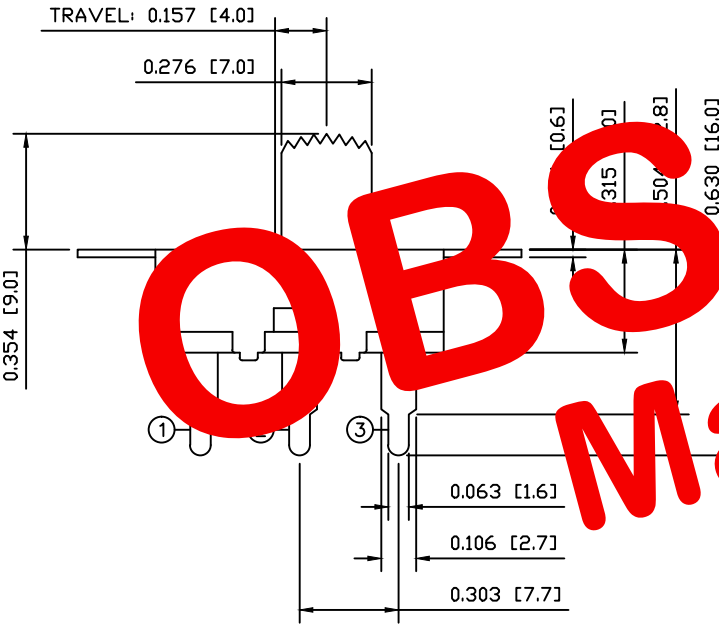
DIELECTRIC STRENGTH:  
1500VAC For 1 Minute

MECHANICAL LIFE:  
10,000 Cycles

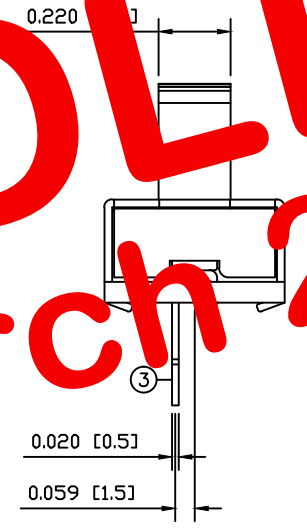
ELECTRICAL LIFE:  
10,000 Cycles

TEMPERATURE:  
-30° to 105°C

APPROVALS:



SUGGESTED PANEL CUTOUT



SUGGESTED PCB LAYOUT

MATERIALS

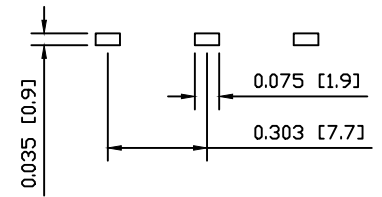
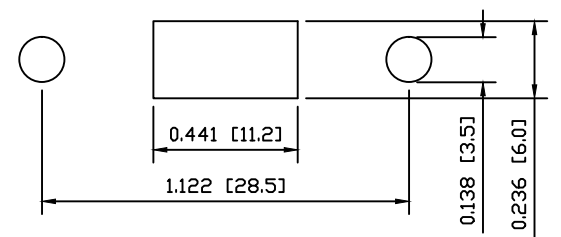
UPPER BODY:  
Steel

BASE:  
Phenolic Board, UL94 V-0

ACTUATOR:  
Polyphenylene Oxide

CONTACTS  
Silver

TERMINALS:  
Silver Plated Copper



UNLESS OTHERWISE SPECIFIED,  
DIMENSIONS ARE IN INCHES [MILLIMETERS]  
TOLERANCES ARE:

DEC .X±0.2	ANG ± 1°
.XXX±0.008	DRAWING NOT TO SCALE
DRAWN BY: STACEY CHRISTIANSON	

	P.O. Box 25110 Portland, OR 97298	LAST REVISION: OCT. 1, 2008
	DRAWING NUMBER: 03-LSU11-120001A9.dwg	
LSU11-120001A9		

