

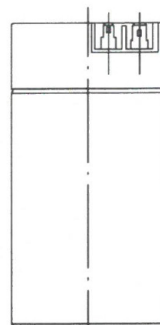
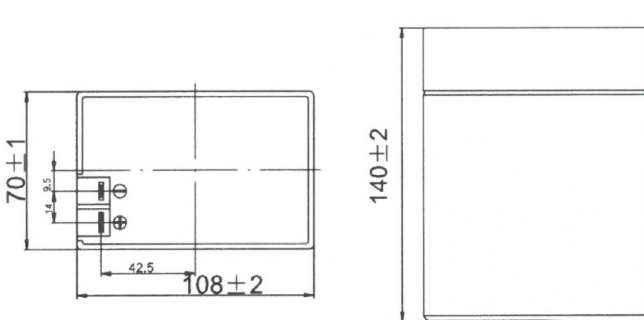
<b>Capacity (25°C)</b>	20HR (0.66A, 10.5V) = 13.2AH 10HR (1.24A, 10.5V) = 12.4AH 5HR (2.21A, 10.5V) = 11.05AH 1HR (7.66A, 10.5V) = 7.66AH
<b>Operating Temperature Range</b>	Charge = 0°C to 45°C Discharge = -15°C to 50°C Storage = -15°C to 40°C
<b>Approx. Weight</b>	2.13Kg
<b>Internal Resistance</b>	Fully charged at 25°C : ≤ 12mΩ
<b>Self Discharge</b>	3% per month at (25°C)
<b>Capacity Affected by Temp. (20HR)</b>	40°C = 102% 25°C = 100% 0°C = 85% -15°C = 65%
<b>Charge Voltage (25°C)</b>	Cycle Use = 7.20 - 7.35V (-15mV/°C) Max Current = 3.6A Float Use = 6.75V-6.90V (-10mV/°C)
<b>Dimensions (Nominal)</b>	Length: 108mm (4.25 in.) Width: 71mm (2.80 in.) Height: 140mm (5.51 in.) Total Height: 140mm (5.51 in.)

- Completely sealed, maintenance-free, low self-discharge
- State of the art AGM and grid alloy formula technology
- Non-spillable, stable quality and high reliability with excellent re-charging performance
- Floating and standby use up to: 5 years
- Cycle use: Up to 260 cycles at 100% DoD
- Cycle use : Up to 500 Cycles at 50% DoD
- Container and Cover Material – ABS UL94-HB (optional UL94-V0)
- Transportation - D.O.T., I.A.T.A. & F.A.A.

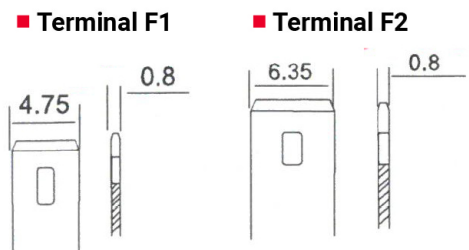


## ■ APPLICATIONS

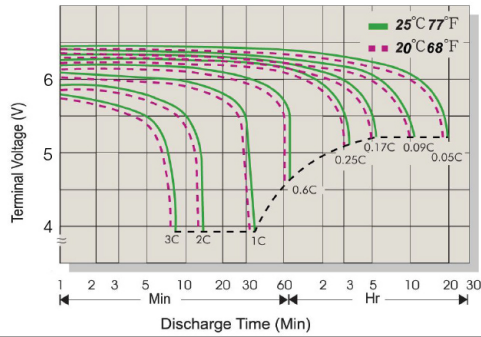
Multipurpose	Alarm & Security System	DC Power Supply
Telecommunications	Comm. Power Supply	Auto Control System
UPS	Elec. Power System (EPS)	Traffic Control Signaling
Medical Equipment	Emergency Backup Power	Emergency Lighting



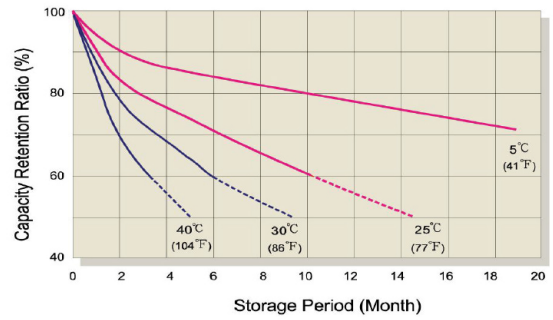
### Terminal Type



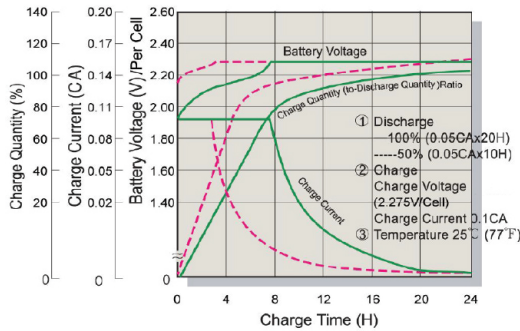
## Terminal Voltage (V) & Discharge Time



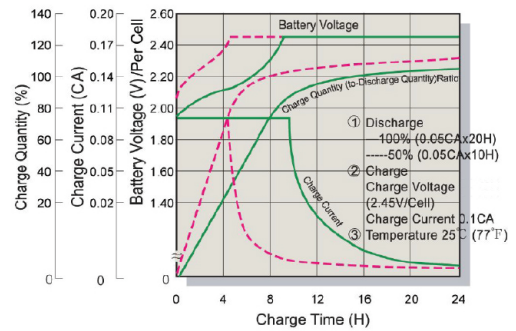
## Capacity Retention Characteristic



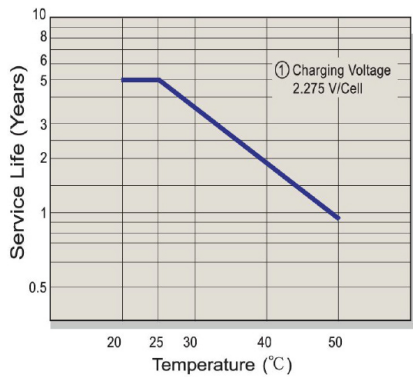
## Battery Voltage & Charge Time For Standby Use



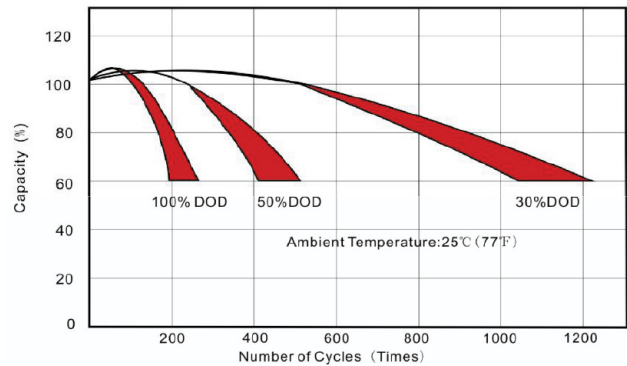
## Battery Voltage & Charge Time for Cycle Use



## Float Service Life



## Cycle Service Life



### Constant Current Discharge (A) at 25°C (77°F)

F.V/Time	5min	10min	15min	30min	1h	2h	3h	4h	5h	8h	10h	20h
1.80V/cell	80.60	59.20	46.85	29.50	18.28	10.354	7.265	5.611	4.651	3.910	2.525	1.388
1.75V/cell	89.08	62.85	49.35	30.08	18.52	10.585	7.416	5.750	4.709	4.003	2.584	1.395
1.70V/cell	96.21	64.79	50.51	30.47	18.71	10.690	7.520	5.796	4.813	4.061	2.623	1.398
1.67V/cell	99.30	65.94	51.10	30.66	18.83	10.724	7.578	5.854	4.859	4.142	2.642	1.400
1.60V/cell	103.92	66.90	51.68	30.85	18.86	10.782	7.635	5.877	4.870	4.223	2.661	1.402

### Constant Power Discharge (W) at 25°C (77°F)

F.V/Time	5min	10min	15min	30min	1h	2h	3h	4h	5h	8h	10h	20h
1.80V/cell	49.28	31.93	23.37	14.69	7.809	4.558	3.667	2.892	2.476	2.001	1.261	0.694
1.75V/cell	50.67	32.28	23.60	14.81	8.191	4.674	3.702	2.950	2.499	2.036	1.273	0.698
1.70V/cell	51.94	32.97	24.06	15.04	8.445	4.789	3.760	3.008	2.522	2.082	1.284	0.699
1.67V/cell	52.64	33.43	25.22	15.25	8.619	4.905	3.818	3.008	2.545	2.140	1.296	0.700
1.60V/cell	53.56	35.75	26.38	15.62	8.723	5.021	3.933	3.124	2.568	2.175	1.307	0.701