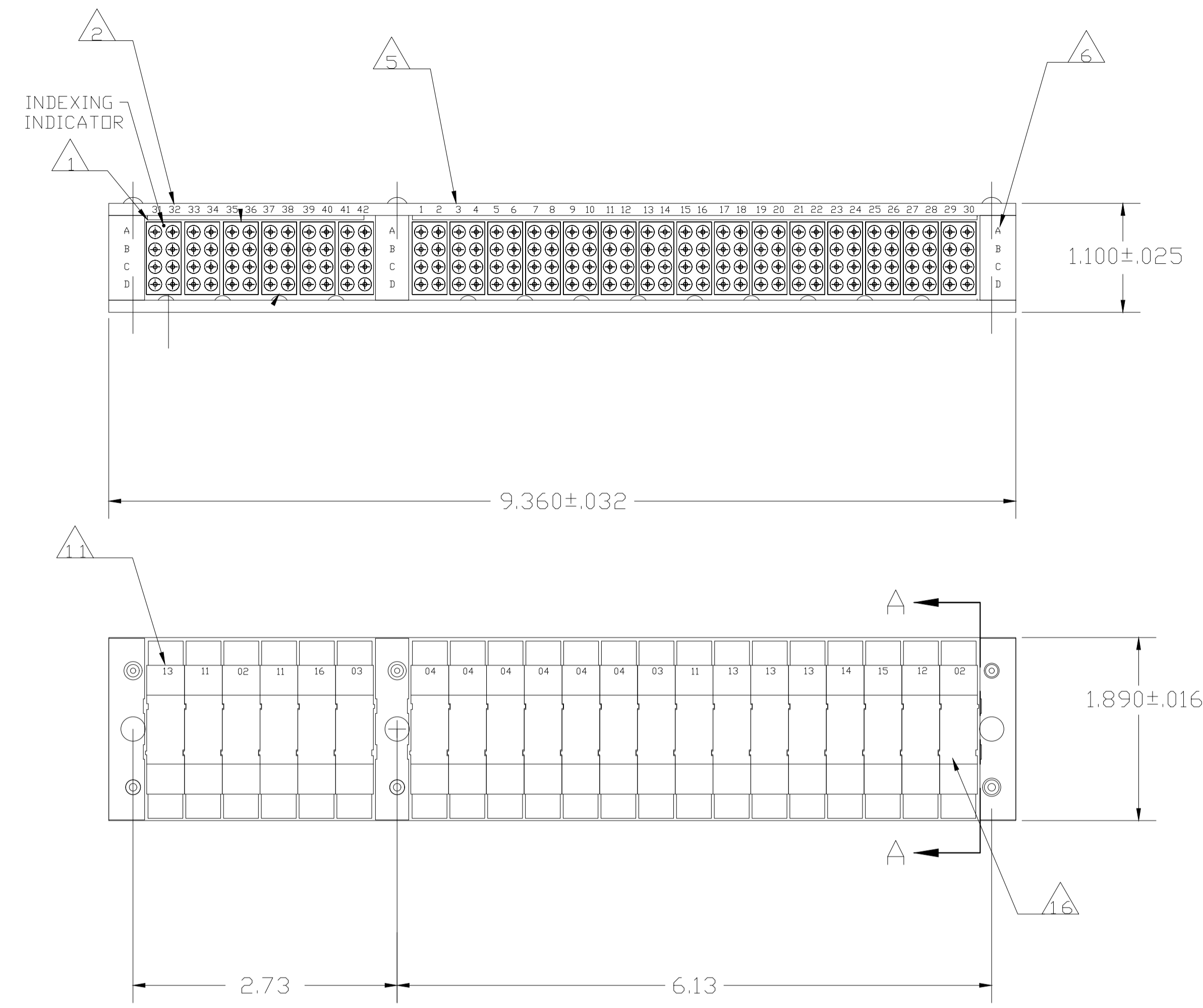
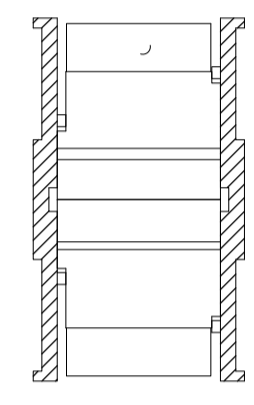


DESCRIPTION	TE PART NO.	MIL PART NO.
CONTACT	1-592404-1	M39029/1-102
SEALING PLUG	592104-2	MS27488-16
INS/EXT TOOL	592155-1	M81969/14-03

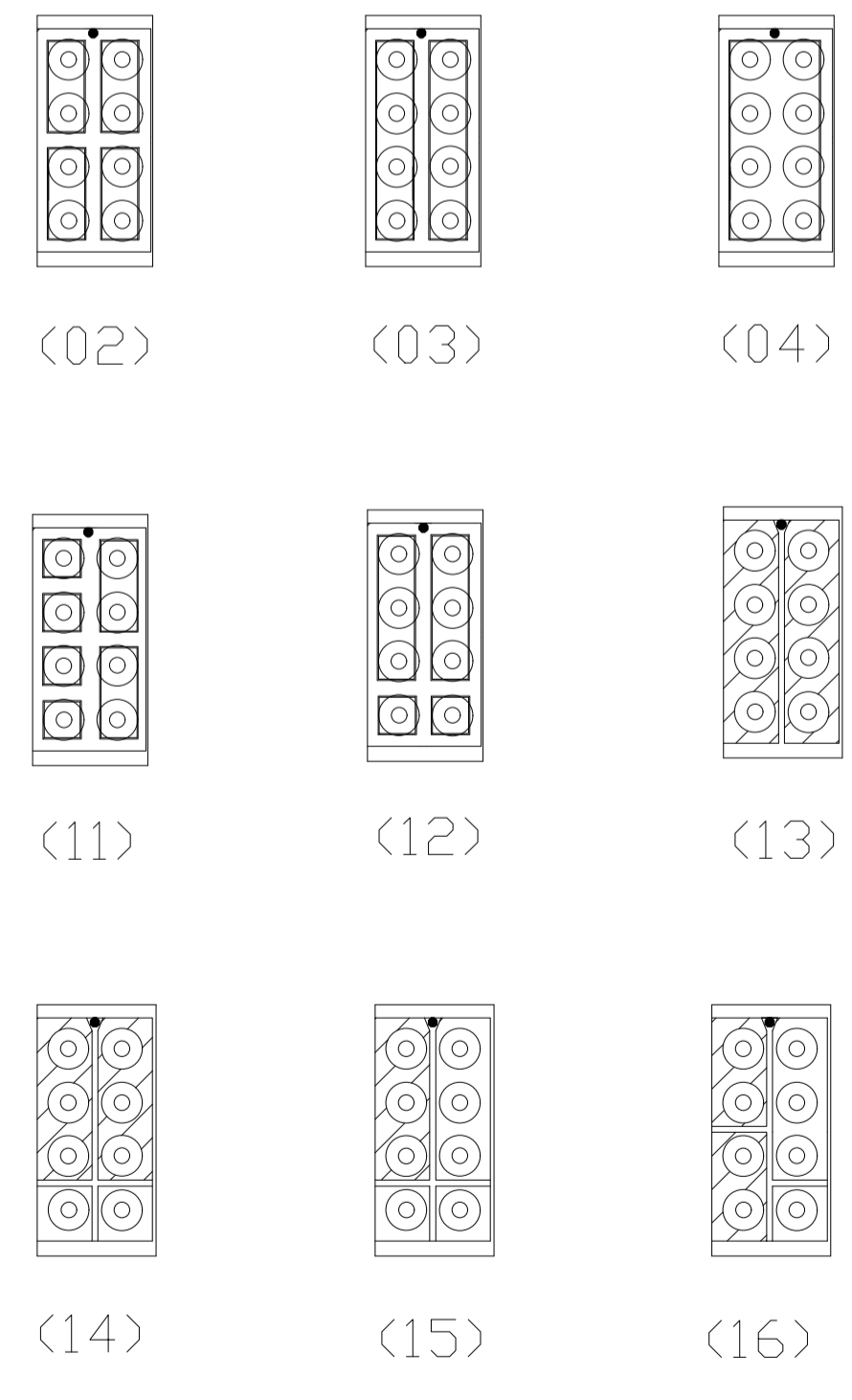
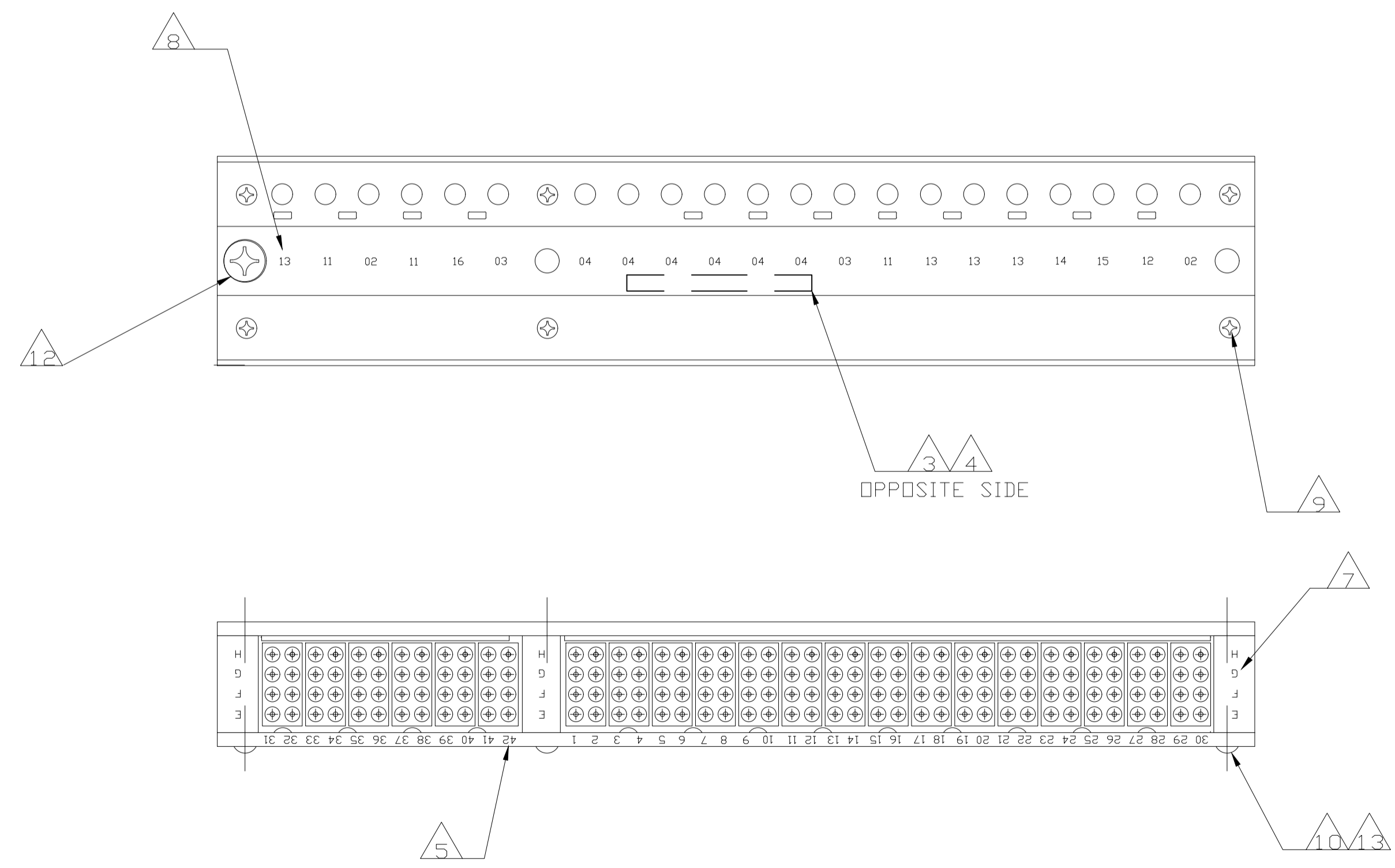
REVISIONS				
REV	DATE	DESCRIPTION	BY	APPD
E	11-25-20	REV PER ECD 20-008727	CT	VR



- 1 MODULE ASSEMBLIES ORIENTATED AS SHOWN FROM LOCATION NO. 31 ON RAIL ASSEMBLY.
- 2 MODULE BLOCK MARKED WITH APPROPRIATE BUSSING ARRANGEMENT.
- 3 CUSTOMER PART NO. 97437-121-01A MARKED IN AREA SHOWN. (<-2 ONLY)
- 4 "TE", TE PART NO. AND DATE CODE MARKED IN AREA SHOWN.
- 5 TOP AND BOTTOM OF RAIL ASSEMBLY MARKED WITH ZONE IDENTIFICATION AS SHOWN.
- 6 TOP OF END BLOCKS AND TIE BLOCK MARKED WITH "ABCD" AT LOCATION SHOWN.
- 7 BOTTOM OF END BLOCKS AND TIE BLOCK MARKED WITH "EFGH" AT LOCATION SHOWN.
- 8 LEFT SIDE RAIL MARKED WITH BUSSING IDENTIFICATION AS SHOWN.
- 9 REF. FLAT HEADED SCREWS MS51959-4.
- 10 REF. PAN HEADED SCREWS MS35206-203.
- 11 EACH APPLICABLE MODULE ASSEMBLY MARKED WITH BUSSING ARRANGEMENT NUMBER IN APPROXIMATE AREA SHOWN.
- 12 REF. FLATHEAD SCREW MS51959-6 2
- 13 LOCK WASHER MS35338-039.
- 14. ROLLS-ROYCE QUALITY SPECIFICATION CQC-103 IS INVOKED FOR THIS PART NUMBER.
- 15 CONTACTS, SEALING PLUGS AND INS/EXT TOOL ARE NOT SUPPLIED, SEE TABLE FOR PART NUMBERS.
- 16 HOUSING MATERIAL: GLASS FILLED EPOXY THERMOSET. COLOR: BLACK ALL MODULES.



SECTION A - A



BUSSING ARRANGEMENT

RoHS COMPLIANT PART	(13) (11) (02) (11) (16) (03) TIE BLDCK (04) (04) (04) (04) (04) (04) (03) (11) (13) (13) (14) (15) (12) (02)	5-591642-2
	(13) (11) (02) (11) (16) (03) TIE BLDCK (04) (04) (04) (04) (04) (03) (11) (13) (13) (13) (14) (15) (12) (02)	591642-2
SUPERCEDED BY 591642-2	(13) (11) (02) (11) (16) (03) TIE BLDCK (04) (04) (04) (04) (04) (03) (11) (13) (13) (13) (14) (15) (12) (02)	591642-1
REMARKS	BUSSING ARRANGEMENT	PART NO

THIS DRAWING IS A CONTROLLED DOCUMENT.		DWG: C. C. THOMAS 19SEP00		TE Connectivity	
DIMENSIONS: INCHES		CHK: D. MILLER 9-16-00		NAME: -	
TOLERANCES UNLESS OTHERWISE SPECIFIED:		APP'D: D. MILLER 9-15-00		PRODUCT SPEC: -	
0 PLC ± -		APPLIC. SPEC: -		SIZE: -	
1 PLC ± -		MATERIAL: -		WEIGHT: 0.000000	
2 PLC ± .02		FINISH: -		A1 00779 C=591642	
3 PLC ± .005		CUSTOMER DRAWING		SCALE: 1:1	
4 PLC ± -		RESTRICTED TO: -		SHEET 1 OF 1	
ANGLES ± -		REV: E		REV: E	