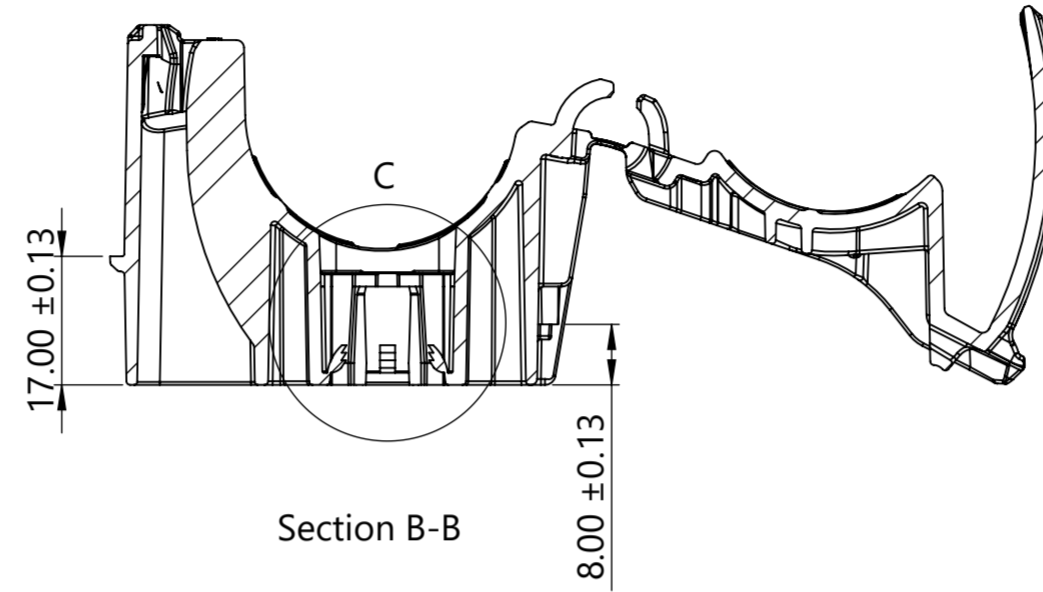
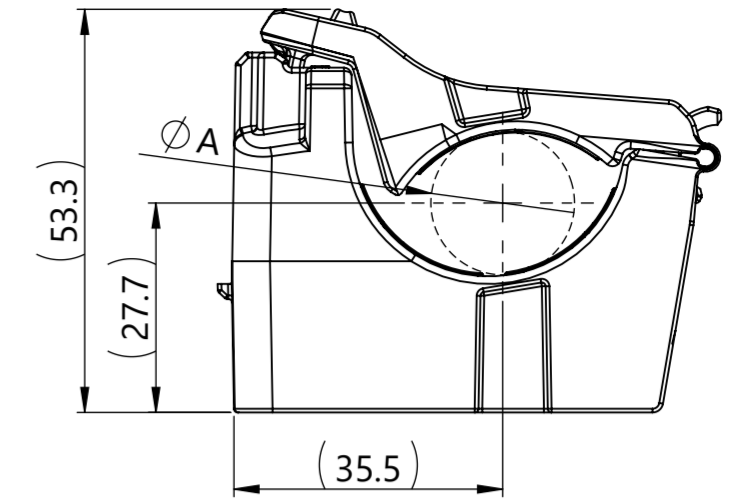


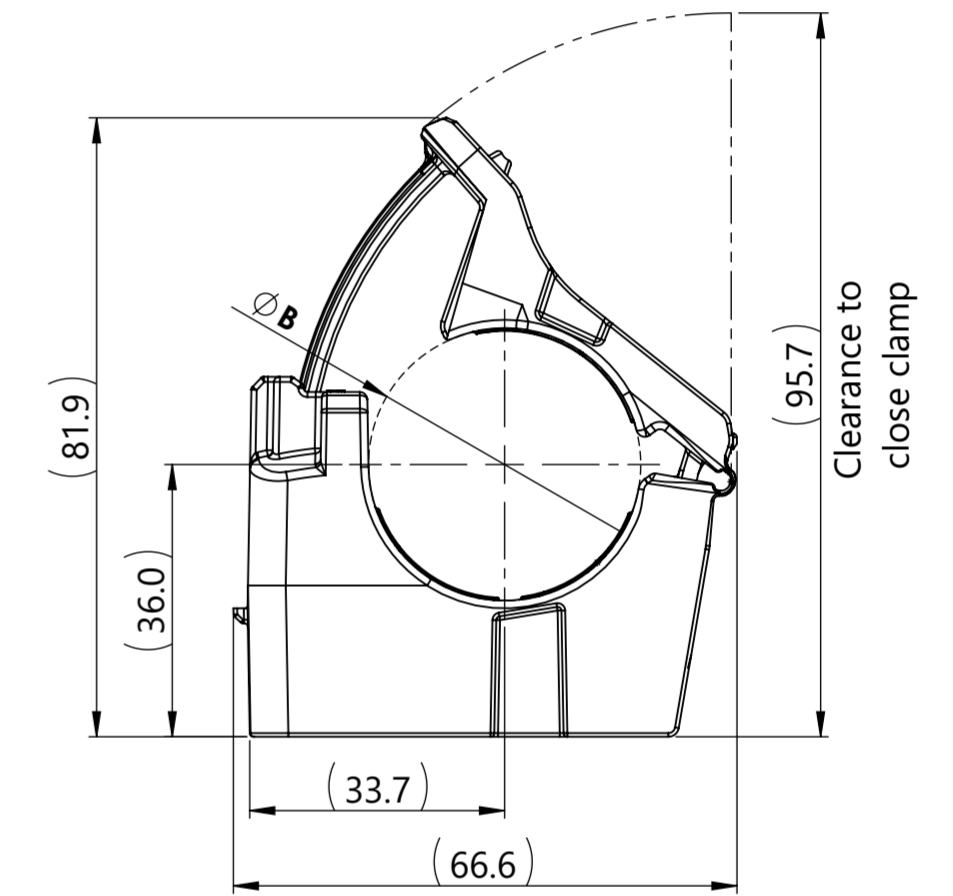
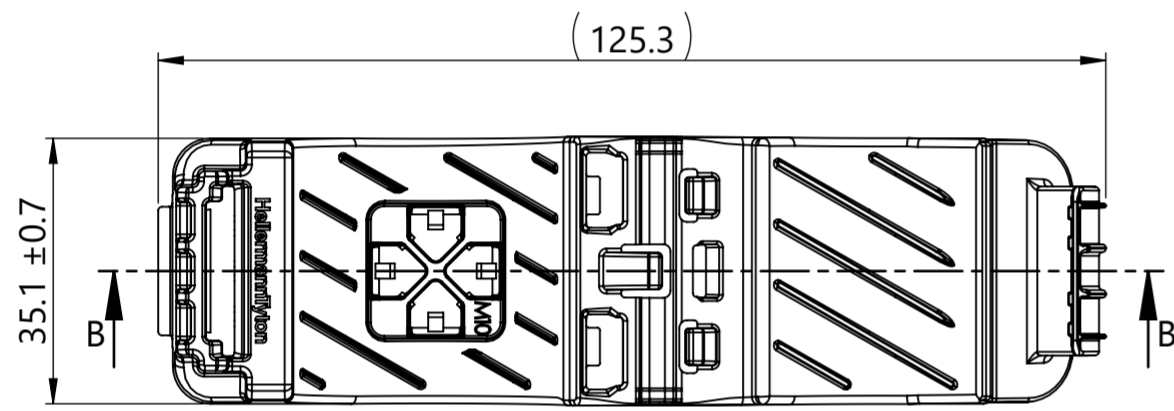
Isometric View
Product shipped in clamp open position



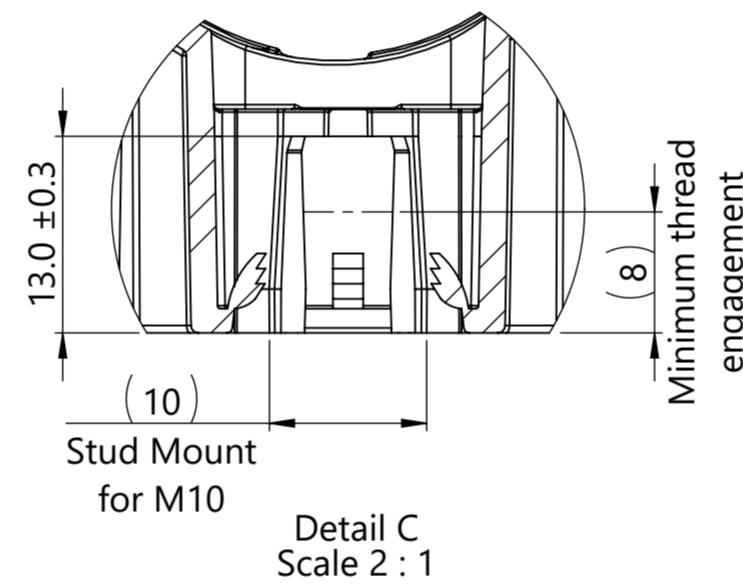
Section B-B



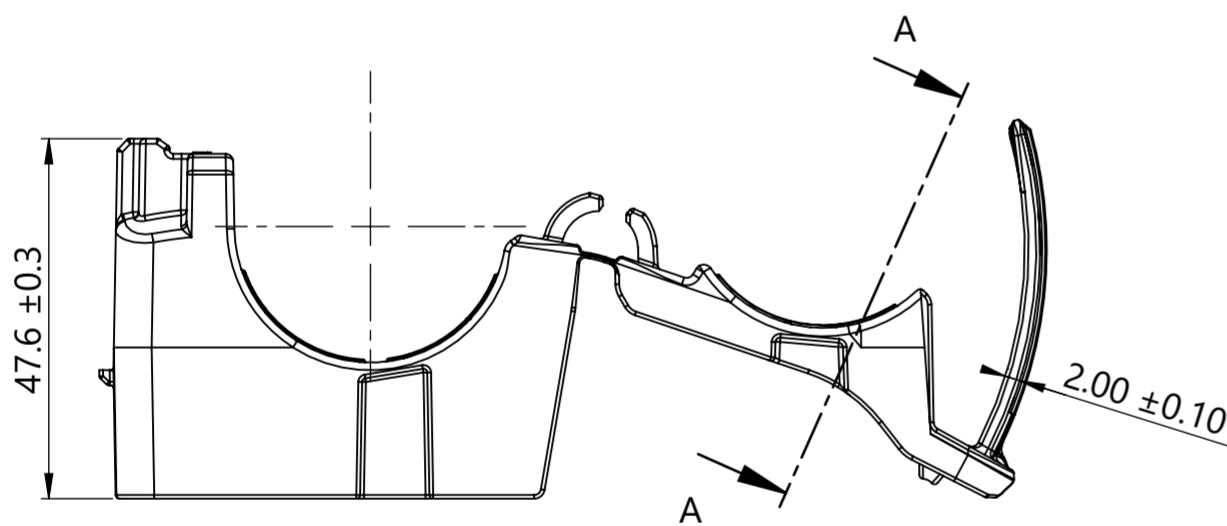
Minimum Bundle Diameter



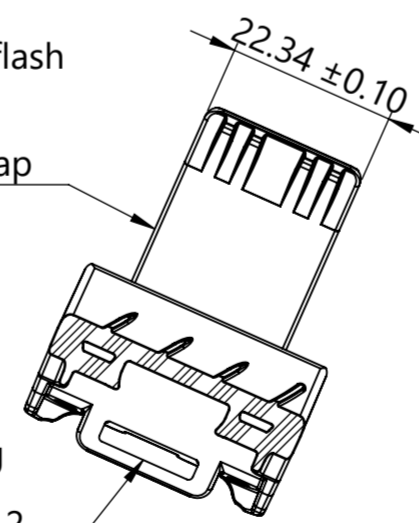
Maximum Bundle Diameter



Stud Mount
for M10
Detail C
Scale 2:1



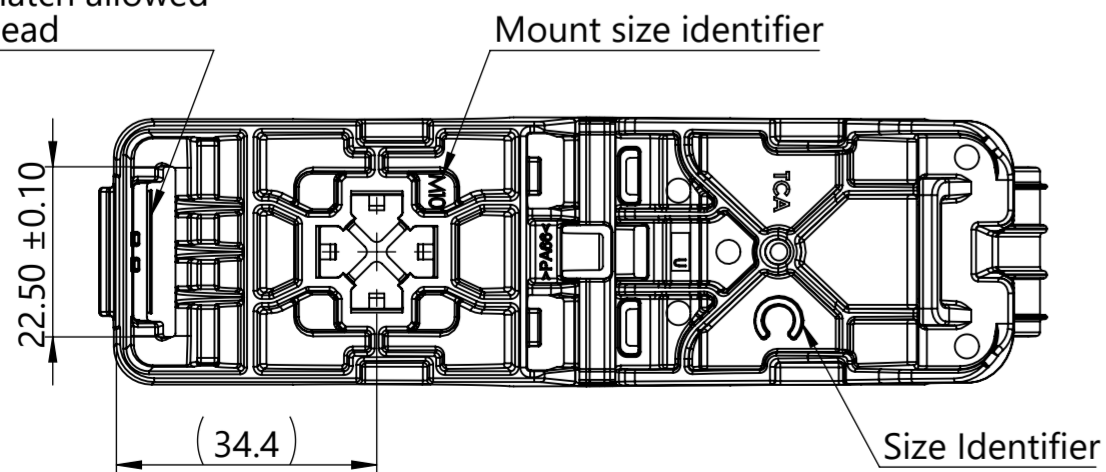
0.10 Maximum flash
or mismatch
allowed around
perimeter of strap



Saddle opening
accommodates
Straps up to 13.2
wide and 2.1 thick

Section A-A

0.10 Maximum flash
or mismatch
allowed
inside head



Mount size identifier

Size Identifier

Performance requirements:
Dry as molded with $\leq 0.5\%$ moisture content:

- ITS-0001 Ratchet Clamp Split Mandrel Test:
445 newtons [100 lbf] minimum at a nominal
bundle diameter of 25.40mm [1.000in]
- ITS-0006 Push On and Pull Off Stud Mount
Push on force: 45 newtons [10 lbf] maximum
Pull off force: 222 newtons [50 lbf] minimum

Notes:

- Material: See chart
- Material color: See chart
- Maximum percent regrind permissible: 25%
- Maximum allowable flash to be: 0.50 "Unless otherwise noted"
- Maximum allowable mismatch to be: 0.15 "Unless otherwise noted"

Bundle Types	A Minimum Diameter	B Maximum Diameter
Soft	19.4 ± 0.3	36.0 ± 0.3
Hard	18.6 ± 0.3	35.2 ± 0.3

Global Part Number	Global Part Description	Mounting Stud Size	Type Number	Material	Color
21-0247	CMRCCSMM10-PA66HIRHSUV-BK	M10	CMRCCSMM10	PA66HIRHSUV	Black

Revision level			Revision Record		
Drawing	State	Part	ECN 016828		
00.0	Design Release	-			
Changed	Date (YYYY/MM/DD)				
Spangler	2022/01/18				
Approved	Date (YYYY/MM/DD)				
Toll	2022/01/18				

The copyright of
this drawing is
reserved by
HellermannTyton.

Drawn
Spangler
Date (YYYY/MM/DD)
2021/04/09
Approved
Date (YYYY/MM/DD)
Toll
2021/04/09

CMRCCSMM10
Title
Center Mount RCC Ratchet P-Clamp, Size C,
Clamp Range 18.9 to 36.0, M10 Stud Mount
Scale 1:1
Global Project Number
21-0247
Drawing-No
21-0247-003-CSU
Format A2
Sheet 1/1

Units
mm
HellermannTyton
www.HellermannTyton.com