

4

3

2

1

THIS DRAWING IS UNPUBLISHED. RELEASED FOR PUBLICATION
© COPYRIGHT ALL RIGHTS RESERVED.

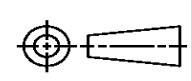
LOC	DIST	REVISIONS			
P	LTR	DESCRIPTION	DATE	DWN	APVD
	A1	ECR-14-003116	03MAR2014	GK	HMR

REPLACED BY OCEAN STYLE APPLICATOR PART NUMBER 2150369-6

FOR REPLACEMENT PARTS FOR APPLICATOR 1911323
REFER TO ADDITIONAL PAGE(S). SPARE PARTS KIT (IF LISTED)
WILL REMAIN AVAILABLE.

THE REPLACEMENT OCEAN STYLE APPLICATOR HAS THE
SAME TERMINATOR/PRESS INTERFACE AS APPLICATOR
1911323

THIS DRAWING IS A CONTROLLED DOCUMENT.		DWN	GOPALAKRISHNA HV														
DIMENSIONS:		CHK	RAGHAVENDRA														
TOLERANCES UNLESS OTHERWISE SPECIFIED:		APVD	RAGHAVENDRA														
<table border="0"> <tr><td>0 PLC</td><td>±</td></tr> <tr><td>1 PLC</td><td>±</td></tr> <tr><td>2 PLC</td><td>±</td></tr> <tr><td>3 PLC</td><td>±</td></tr> <tr><td>4 PLC</td><td>±</td></tr> <tr><td>ANGLES</td><td>±</td></tr> </table>		0 PLC	±	1 PLC	±	2 PLC	±	3 PLC	±	4 PLC	±	ANGLES	±	PRODUCT SPEC	NAME		
0 PLC	±																
1 PLC	±																
2 PLC	±																
3 PLC	±																
4 PLC	±																
ANGLES	±																
MATERIAL		APPLICATION SPEC	END FEED SYSTEM III APPLICATOR														
FINISH		WEIGHT	SIZE	CAGE CODE	DRAWING NO												
			A3		©- 1911323												
		CUSTOMER ACCESSIBLE PRODUCTION DRAWING		SCALE	SHEET 1 OF 2 REV A1												



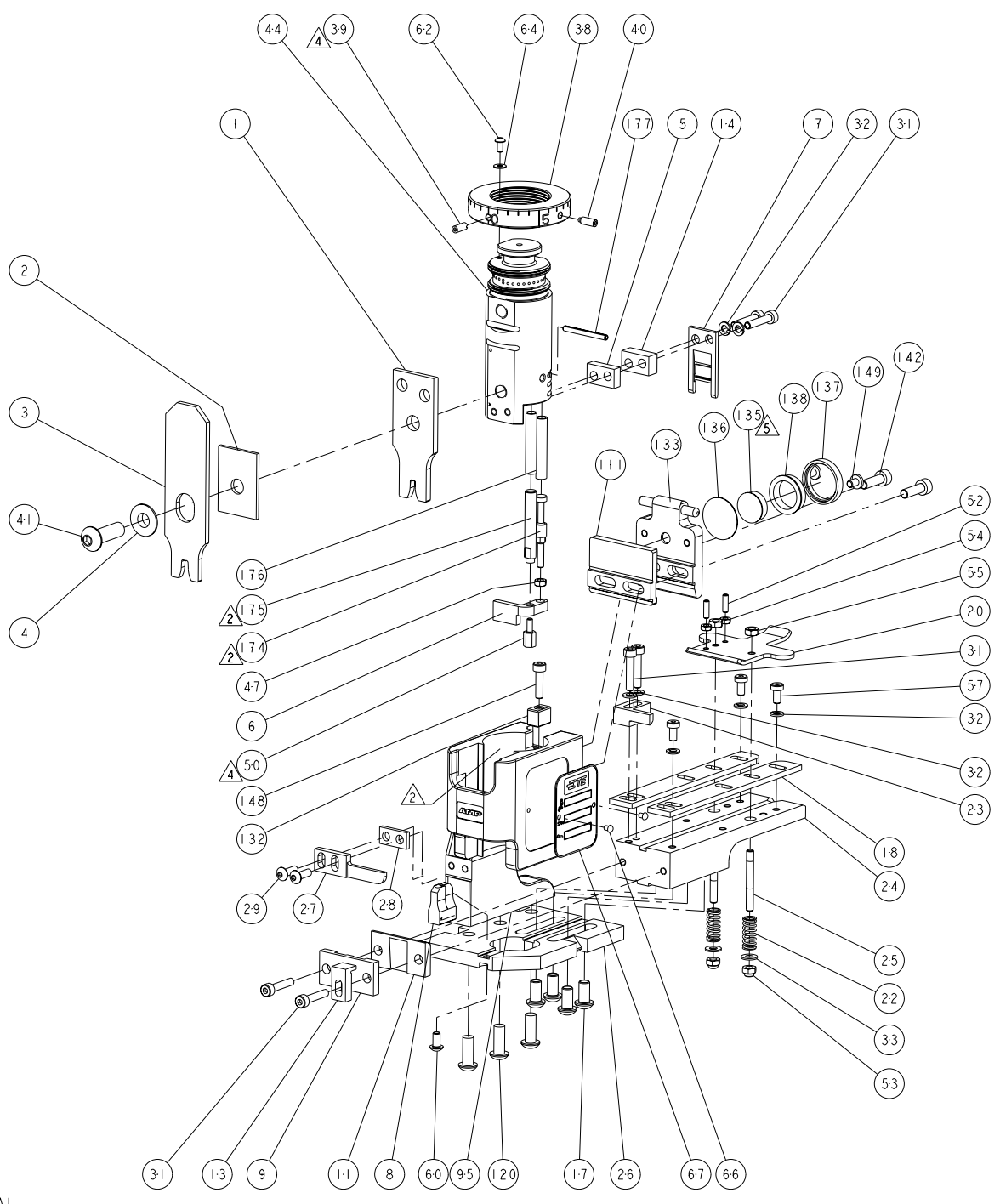
8		7		6		5		4		3		2		1	
THIS DRAWING IS UNPUBLISHED. RELEASED FOR PUBLICATION															
COPYRIGHT © BY TYCO ELECTRONICS CORPORATION. ALL RIGHTS RESERVED.															
PART NUMBER	REV	DESCRIPTION	PROGRAMMED MEMORY CHIP												
1911323-1	A	S3A APPLICATOR	8-1911323-1												
7-1911323-1	A	-1 AND SPARE PARTS	9-1911323-1												
7-1911323-7	A	SPARE PARTS KIT													

APPLICATOR DATA		
CRIMP	SIZE	TYPE
WIRE	3.05 [.120 IN]	F
INSUL	4.57 [.180 IN]	F
APPL INSTRUCTIONS 408-10136		

TERMINAL DATA: TE TERMINAL	TYCO ELECTRONICS CRIMP SPEC		
TERMINAL NAME: FASTIN-FASTON RECEPTACLE, SERIES 9.5mm			
WIRE STRIP LENGTH	INSULATION DIAMETER RANGE		
4.80-5.60mm [.188-.220 IN]	2.40-3.70mm [.094-.145 IN]		
TERMINAL APPL SPEC	114-18022		
TERMINALS APPLIED			
962835-1	962835-2	962835-3	

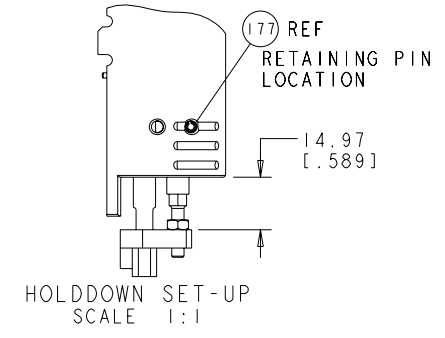
WIRE SIZE	CRIMP HEIGHT mm [INCH]
2.5mm ²	2.18±.05 [.086±.002]
14AWG	2.07±.05 [.082±.002]
2mm ²	2.05±.05 [.081±.002]
1.5mm ²	1.92±.05 [.076±.002]
16AWG	1.87±.05 [.074±.002]
1mm ²	1.79±.05 [.070±.002]
0.75mm ²	1.72±.05 [.068±.002]

FEED FINGER	SET UP GAGE	LOC	DIST	REVISIONS					
1901697-1	1901068-1	A	66	P	LYR	DESCRIPTION	DATE	DWN	APVD
				A		RELEASED	13JAN2012	ROW	TE



-	1	1	1-993111-6	PIN, SLOTTED SPRING 3.0 X 30.0	177
-	2	2	3-22280-7	SPRING, COMPRESSION	176
-	1	1	1752353-1	GUIDE PIN, HOLDDOWN	175
-	1	1	1901680-1	GUIDE PIN, HOLDDOWN	174
-	2	2	992285-1	SCR, LOW SKT HD CAP M4 X 6.0	149
-	1	1	1655316-3	SCR, SKT HD CAP, M4 X 16.0	148
-	2	2	5-1655316-5	SCR, SKT HD CAP, M5 X 16.0	142
-	1	1	1901051-1	RING, OUTER	138
-	1	1	1901052-1	INSULATOR, MEMORY CHIP	137
-	1	1	1901050-1	DISC, INSULATING	136
-	1	1	1901689-1	MEMORY CHIP	135
-	1	1	1901065-1	PLATE, FEEDER ATTACH	133
-	1	1	1901247-1	KEY, RAM	132
-	3	3	994988-1	SCR, BTN SKT HD CAP M6X16.0 W/NYLOK	120
-	-	-	1901094-2	SPACER, FEEDER	111
-	1	1	1752366-1	HOUSING, END FEED	95
-	1	1	1633565-2	DOCUMENTATION PACKAGE SIII	71
-	1	1	1901048-1	TAG, IDENTIFICATION	67
-	2	2	21017-1	SCREW, DRIVE	66
-	1	1	18028-1	WASHER, FLAT, REG M3	64
-	1	1	1655785-9	SCR, BTN SKT HD CAP (M3 X 6)	62
-	1	1	1655785-1	SCR, BTN SKT HD CAP (M4 X 8)	60
-	3	3	1655783-2	SCR, CAP, SOC HD, LOW HEAD, M4 X 8	57
-	2	2	2-1655316-6	SCR, SKT HD CAP, M4 X 20.0	56
-	2	2	18030-2	NUT, HEX, REG M4	55
-	2	2	18030-1	NUT, HEX, REG M3	54
-	2	2	986965-1	NUT, LOCK, HEX, TORQUE (M4)	53
-	2	2	2-18032-2	SCR, SET, FLT POINT M3 X 10.0	52
-	1	1	1-1752354-7	STANDOFF, HOLD-DOWN	50
-	1	1	1-18030-0	NUT, HEX, REG M3.5	47
-	1	1	1752308-1	RAM	44
-	1	1	2-1655785-3	SCR, BTN SKT HD CAP (M8 X 25)	41
-	1	1	993002-4	SCREW, SET, SFT TIP	40
-	1	1	1962043-1	PLUNGER, BALL, METRIC	39
-	1	1	1752309-1	RING, INSULATION CRIMP	38
-	2	2	18028-2	WASHER, FLAT, REG M4	33
-	7	7	18026-2	WASHER, SPRG LOCK, REG M4	32
-	4	4	2-1655316-6	SCR, SKT HD CAP, M4 X 20.0	31
-	2	2	1655785-2	SCR, BTN SKT HD CAP (M4 X 12)	29
-	1	1	1-690451-8	SPACER, STRIPPER	28
-	1	1	240639-1	STRIPPER (MACHINING)	27
-	1	1	1752328-1	BASEPLATE	26
-	2	2	1320906-1	STUD, THREADED	25
-	1	1	1752371-6	PLATE, STRIP GUIDE	24
-	1	1	240825-2	PLATE, STRIP HOLD DOWN	23
-	2	2	4-22281-1	SPRING, DRAG	22
-	1	1	1752373-1	DRAG	20
-	2	2	1901259-6	GUIDE, LOWER STRIP	18
-	4	4	1655785-5	SCR, BTN SKT HD CAP (M6 X 12)	17
-	1	1	6-240641-8	SPACER	14
-	1	1	1752360-1	SPACER, HOLD-DOWN	13
-	1	1	240833-3	PLATE, REAR SHEAR	11
-	1	1	690482-5	PLATE, FRONT SHEAR	9
-	1	2	1333220-4	ANVIL, COMBINATION, .120	8
-	1	1	3-690474-6	BLADE, SLUG	7
-	1	1	1901681-5	HOLDDOWN, TERMINAL	6
-	1	1	1-240641-8	SPACER	5
-	1	1	238009-1	BLOCK, FL CRIMPER SPACER	4
-	1	2	4-456134-6	CRIMPER, INSULATION F PREMIUM	3
-	1	1	1-455888-8	SPACER, CRIMPER	2
-	1	2	3-657555-9	CRIMPER, WIRE PREMIUM	1

- ⊠ RECOMMENDED SPARE PARTS.
- ⊡ GREASE BEARING SURFACES LIGHTLY.
- 3. LUBRICATE DAILY PER THE APPLICATOR INSTRUCTION SHEET SUPPLIED WITH THE APPLICATOR.
- ⊠ APPLY P/N 1-23419-5 LOCTITE® TO THREADS.
- ⊡ APPLICATOR SPECIFIC DATA TO BE ENTERED INTO BLANK MEMORY CHIP AT ASSEMBLY.
- ⊠ WIRE AND INSULATION RANGE QUOTED IS RANGE OF TERMINAL.
- ⊠ USE 1.50mm² CRIMP HEIGHT FOR DOUBLE WIRE CRIMP 0.75mm²+ 0.75mm².
- ⊠ WIRE SIZES 1.00mm² AND 0.75mm² ARE INCLUDED FOR INSULATION RANGE FOR A SPECIFIC CUSTOMER REQUIREMENT. THE MINIMUM INSULATION FOR THESE WIRES IS Ø2.0mm. THESE WIRES ARE OUTSIDE THE TERMINAL APPLICATION RANGE AND THEREFORE CANNOT BE RECOMMENDED.



DIMENSIONS: mm [INCHES]		TOLERANCES UNLESS OTHERWISE SPECIFIED:		DWN R. O. WILSON 03NOV2011		Tyco Electronics Tyco Electronics Harrisburg, PA 17105-3608	
0 PLC	±	1 PLC	±0.05	CHK K. J. STAKEM 03NOV2011	NAME	END FEED SYSTEM III APPLICATOR	
2 PLC	±0.02	3 PLC	±0.005	APVD T. L. ELBIN 04NOV2011	PRODUCT SPEC		
4 PLC	±0.0005	ANGLES	±	APPLICATION SPEC	SIZE	CAGE CODE	DRAWING NO
				WEIGHT	A	00779	1911323
				CUSTOMER DRAWING	SCALE	3:5	SHEET 1 OF 1 REV A