

| ITEM | DESCRIPTION |
|------|----------------|
| 1 | SCREW |
| 2 | CAP |
| 3 | COVER ASSEMBLY |
| 4 | PCB ASSEMBLY |
| 5 | INSERT HOUSING |
| 6 | GASKET |

S11309NB021

SERIES S11= INTERNAL THREAD FORM A
 POLES 2= 2 POLE & 3= 3 POLE
 THREAD 09= PG9, 11= PG11, M6= M16x1.5
 MATERIAL AND HOUSING COLOUR G= PA6 GRAY, N= PA6 BLACK, W= PA6 BLACK V0, T= PA12 TRANSPARENT
 CIRCUIT SEE DETAILS IN CATALOGUE
 VOLTAGE SEE DETAILS IN CATALOGUE
 SCREW AND GASKET 1= NBR PROFILE GASKET & SCREW, 2= NBR FLAT GASKET & SCREW, 3= WHITE SILICON PROFILE GASKET & SCREW, 4= WHITE SILICON FLAT GASKET & SCREW

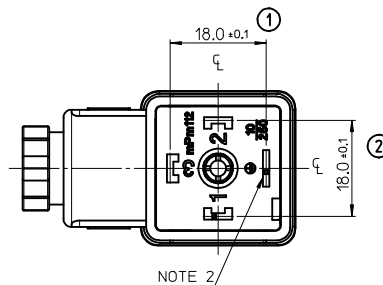
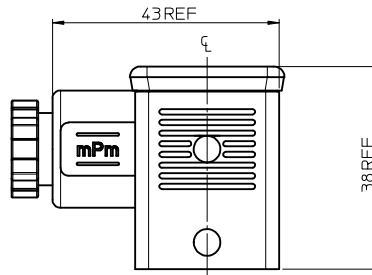
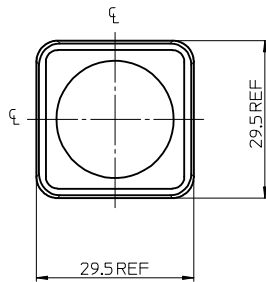
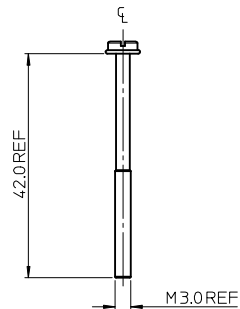
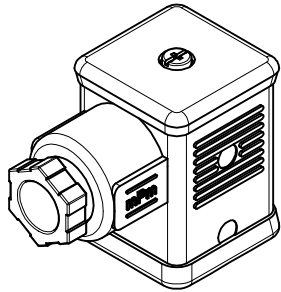
- NOTES
- PLEASE SEE SHEET 2 FOR CURRENTLY CONFIGURED PART NUMBERS. FOR SPECIFIC PART NUMBERS PLEASE CONTACT SALES OR CONSULT THE INTELLIGENT PART NUMBERS IN THE TABLE ATTACHED.
 - EARTH POSITION SHOWN, H12.
 - FOR PACKAGING SEE PACKAGING SPEC PK-121065-S11
 - PRODUCT SPEC: SEE PS-121201-001

LAST INSPECTION NUMBER 2

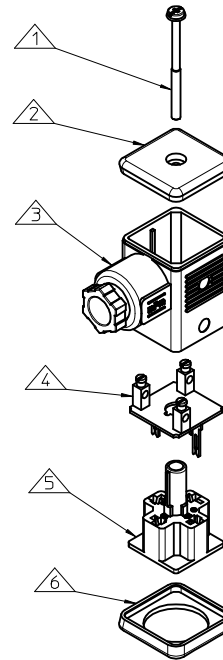
| | | | | | | | | | |
|---|--------------------------------------|---|--|-----------------------------------|--------------------|-------------------------------------|------------------------|------------------------|--|
| ADDED PART NUMBER EC NO: IFC2016-0168 DRWN:BCAFFREY 2015/07/30 CHKD:DMAHER 2015/08/11 APPR:STIGLIEFIN 2015/08/21 | QUALITY SYMBOLS ▽=0 ▽=0 | GENERAL TOLERANCES (UNLESS SPECIFIED) | | DIMENSION STYLE MM ONLY | | SCALE 1.5:1 | DESIGN UNITS METRIC | THIRD ANGLE PROJECTION | |
| | | 4 PLACES ± --- ± --- 3 PLACES ± --- ± --- 2 PLACES ± 0.10 ± --- 1 PLACE ± 0.20 ± --- | mm INCH ± --- ± --- ± 0.10 ± --- ± 0.20 ± --- | DRAWN BY JOCONNOR | DATE 2011/05/31 | TITLE S11 SERIES INTERNAL THREAD | | MOLEX INCORPORATED | |
| H REV | DESCRIPTION | DRAFT WHERE APPLICABLE MUST REMAIN WITHIN DIMENSIONS | | MATERIAL NO. SEE SHEET 2 | | DOCUMENT NO. SD-121064-006 | | SHEET NO. 1 OF 2 | |
| | | THIS DRAWING CONTAINS INFORMATION THAT IS PROPRIETARY TO MOLEX INCORPORATED AND SHOULD NOT BE USED WITHOUT WRITTEN PERMISSION | | | | | | | |

| PART No. | mPm PART No. | DESCRIPTION | CIRCUIT | VOLTAGE | INDICATOR |
|------------|--------------|---|---------|---------|----------------|
| 1210641278 | S11311NB421 | TYPE A 3P PG11 BLACK, NBR PROFILE GASKET | B4 | 24V | RED/YELLOW LED |
| 1210641359 | S11309TQ021 | TYPE A 3P PG9 TRANSPARENT, NBR PROFILE GASKET | Q0 | 24V | RED/GREEN LED |
| 1210641322 | S11311TQ021 | TYPE A 3P PG11 TRANSPARENT, NBR PROFILE GASKET | Q0 | 24V | RED/GREEN LED |
| 1210641801 | S11209NC731 | TYPE A 2P PG9 BLACK HOUSING, TRANSPARENT CAP, NBR PROFILE GASKET | C7 | 48V | RED LED |
| 1210641802 | S11209NC741 | TYPE A 2P PG9 BLACK HOUSING, TRANSPARENT CAP, NBR PROFILE GASKET | C7 | 115V | RED LED |
| 1210640248 | S11209NR021 | TYPE A 2P PG9 BLACK HOUSING, TRANSPARENT CAP, NBR PROFILE GASKET | R0 | 24V | N/A |
| 1210640250 | S11209NR051 | TYPE A 2P PG9 BLACK HOUSING, TRANSPARENT CAP, NBR PROFILE GASKET | R0 | 230V | N/A |
| 1210641692 | S11209NR2M1 | TYPE A 2P PG9 BLACK HOUSING, TRANSPARENT CAP, NBR PROFILE GASKET | R2 | 230V | YELLOW LED |
| 1210641811 | S11209NR2H1 | TYPE A 2P PG9 BLACK HOUSING, TRANSPARENT CAP, NBR PROFILE GASKET | R2 | 24V | YELLOW LED |
| 1210641762 | S11209NC421 | TYPE A 2P PG9 BLACK HOUSING, TRANSPARENT CAP, NBR PROFILE GASKET | C4 | 24V | RED LED |
| 1210641763 | S11209GC421 | TYPE A 2P PG9 GREY HOUSING, TRANSPARENT CAP, NBR PROFILE GASKET | C4 | 24V | RED LED |
| 1210640293 | S11211GR051 | TYPE A 2P PG11 GREY HOUSING, TRANSPARENT CAP, NBR PROFILE GASKET | R0 | 230V | N/A |
| 1210640331 | S11211NR051 | TYPE A 2P PG11 BLACK HOUSING, TRANSPARENT CAP, NBR PROFILE GASKET | R0 | 230V | N/A |

| | | | | | | | | | | | | | | | | | | | | | |
|---|-------------------------------|--|--------------------------------------|----------------------------|------|----------|--------|---------|----------|--------|---------|----------|--------|--------|---------|--------|--------|-----------------------------------|-----------------------|-------------------------------|------------------------|
| SEE SHEET ONE EC NO: IPG2016-0168 DRWN:BCAFFREY 2015/07/30 CHKD:DMAHER 2015/08/11 APPR:STGRIFLIN 2015/08/21 | QUALITY SYMBOLS ▽=0 ▽=0 | GENERAL TOLERANCES (UNLESS SPECIFIED) <table border="1"> <tr> <td></td> <td>mm</td> <td>INCH</td> </tr> <tr> <td>4 PLACES</td> <td>± .005</td> <td>± .0004</td> </tr> <tr> <td>3 PLACES</td> <td>± .008</td> <td>± .0003</td> </tr> <tr> <td>2 PLACES</td> <td>± 0.10</td> <td>± .004</td> </tr> <tr> <td>1 PLACE</td> <td>± 0.20</td> <td>± .008</td> </tr> </table> ANGULAR ± 2 ° | | mm | INCH | 4 PLACES | ± .005 | ± .0004 | 3 PLACES | ± .008 | ± .0003 | 2 PLACES | ± 0.10 | ± .004 | 1 PLACE | ± 0.20 | ± .008 | DIMENSION STYLE MM ONLY | SCALE 1.5:1 | DESIGN UNITS METRIC | THIRD ANGLE PROJECTION |
| | | mm | INCH | | | | | | | | | | | | | | | | | | |
| | 4 PLACES | ± .005 | ± .0004 | | | | | | | | | | | | | | | | | | |
| | 3 PLACES | ± .008 | ± .0003 | | | | | | | | | | | | | | | | | | |
| 2 PLACES | ± 0.10 | ± .004 | | | | | | | | | | | | | | | | | | | |
| 1 PLACE | ± 0.20 | ± .008 | | | | | | | | | | | | | | | | | | | |
| DRAWN BY JOCONNOR | DATE 2011/05/31 | TITLE S11 SERIES INTERNAL THREAD | | | | | | | | | | | | | | | | | | | |
| CHECKED BY DMAHER | DATE 2011/05/31 | MOLEX INCORPORATED | | | | | | | | | | | | | | | | | | | |
| APPROVED BY EFOLAN | DATE 2011/06/22 | MATERIAL NO. SEE CHART | DOCUMENT NO. SD-121064-006 | SHEET NO. 2 OF 2 | | | | | | | | | | | | | | | | | |



NOTE 2



| ITEM | DESCRIPTION |
|------|----------------|
| 1 | SCREW |
| 2 | CAP |
| 3 | COVER ASSEMBLY |
| 4 | PCB ASSEMBLY |
| 5 | INSERT HOUSING |
| 6 | GASKET |

S11309NB021

SERIES S11= INTERNAL THREAD FORM A
 POLES 2= 2 POLE & 3= 3 POLE
 THREAD 09= PG9, 11= PG11, M6= M16x1.5
 MATERIAL AND HOUSING COLOUR G= PA6 GRAY, N= PA6 BLACK, W= PA6 BLACK V0, T= PA12 TRANSPARENT
 CIRCUIT SEE DETAILS IN CATALOGUE
 VOLTAGE SEE DETAILS IN CATALOGUE
 SCREW AND GASKET 1= NBR PROFILE GASKET & SCREW
 2= NBR FLAT GASKET & SCREW
 3= WHITE SILICON PROFILE GASKET & SCREW
 4= WHITE SILICON FLAT GASKET & SCREW

- NOTES
- PLEASE SEE SHEET 2 FOR CURRENTLY CONFIGURED PART NUMBERS. FOR SPECIFIC PART NUMBERS PLEASE CONTACT SALES OR CONSULT THE INTELLIGENT PART NUMBERS IN THE TABLE ATTACHED.
 - EARTH POSITION SHOWN, H12.
 - FOR PACKAGING SEE PACKAGING SPEC PK-121065-S11
 - PRODUCT SPEC: SEE PS-121201-001

LAST INSPECTION NUMBER 2

| | | | | | | | | | | |
|--|---|--|--|----------------------------|-----------------------|-------------------------------------|------------------------|------------------------|-------------------------------|---------------------|
| ADDED PART NUMBER EC NO: IPG2016-0168 DRWN:BCAFFREY 2015/07/30 CHKD:DMAHER 2015/08/11 APPR:STIGLIEFIN 2015/08/21 | QUALITY SYMBOLS ▽=0 ▽=0 | GENERAL TOLERANCES (UNLESS SPECIFIED) | | DIMENSION STYLE MM ONLY | | SCALE 1.5:1 | DESIGN UNITS METRIC | THIRD ANGLE PROJECTION | | |
| | | 4 PLACES ± --- ± --- 3 PLACES ± --- ± --- 2 PLACES ± 0.10 ± --- 1 PLACE ± 0.20 ± --- ANGULAR ± 2 ° | mm INCH ± --- ± --- ± 0.10 ± --- ± 0.20 ± --- | DRAWN BY JOCONNOR | DATE 2011/05/31 | TITLE S11 SERIES INTERNAL THREAD | | MOLEX INCORPORATED | | |
| DESCRIPTION REV | DRAFT WHERE APPLICABLE MUST REMAIN WITHIN DIMENSIONS | | MATERIAL NO. SEE SHEET 2 | | APPROVED BY EFOLAN | | DATE 2011/06/22 | | DOCUMENT NO. SD-121064-006 | SHEET NO. 1 OF 2 |
| | THIS DRAWING CONTAINS INFORMATION THAT IS PROPRIETARY TO MOLEX INCORPORATED AND SHOULD NOT BE USED WITHOUT WRITTEN PERMISSION | | | | | | | | | |

| PART No. | mPm PART No. | DESCRIPTION | CIRCUIT | VOLTAGE | INDICATOR |
|------------|--------------|---|---------|---------|----------------|
| 1210641278 | S11311NB421 | TYPE A 3P PG11 BLACK, NBR PROFILE GASKET | B4 | 24V | RED/YELLOW LED |
| 1210641359 | S11309TQ021 | TYPE A 3P PG9 TRANSPARENT, NBR PROFILE GASKET | Q0 | 24V | RED/GREEN LED |
| 1210641322 | S11311TQ021 | TYPE A 3P PG11 TRANSPARENT, NBR PROFILE GASKET | Q0 | 24V | RED/GREEN LED |
| 1210641801 | S11209NC731 | TYPE A 2P PG9 BLACK HOUSING, TRANSPARENT CAP, NBR PROFILE GASKET | C7 | 48V | RED LED |
| 1210641802 | S11209NC741 | TYPE A 2P PG9 BLACK HOUSING, TRANSPARENT CAP, NBR PROFILE GASKET | C7 | 115V | RED LED |
| 1210640248 | S11209NR021 | TYPE A 2P PG9 BLACK HOUSING, TRANSPARENT CAP, NBR PROFILE GASKET | R0 | 24V | N/A |
| 1210640250 | S11209NR051 | TYPE A 2P PG9 BLACK HOUSING, TRANSPARENT CAP, NBR PROFILE GASKET | R0 | 230V | N/A |
| 1210641692 | S11209NR2M1 | TYPE A 2P PG9 BLACK HOUSING, TRANSPARENT CAP, NBR PROFILE GASKET | R2 | 230V | YELLOW LED |
| 1210641811 | S11209NR2H1 | TYPE A 2P PG9 BLACK HOUSING, TRANSPARENT CAP, NBR PROFILE GASKET | R2 | 24V | YELLOW LED |
| 1210641762 | S11209NC421 | TYPE A 2P PG9 BLACK HOUSING, TRANSPARENT CAP, NBR PROFILE GASKET | C4 | 24V | RED LED |
| 1210641763 | S11209GC421 | TYPE A 2P PG9 GREY HOUSING, TRANSPARENT CAP, NBR PROFILE GASKET | C4 | 24V | RED LED |
| 1210640293 | S11211GR051 | TYPE A 2P PG11 GREY HOUSING, TRANSPARENT CAP, NBR PROFILE GASKET | R0 | 230V | N/A |
| 1210640331 | S11211NR051 | TYPE A 2P PG11 BLACK HOUSING, TRANSPARENT CAP, NBR PROFILE GASKET | R0 | 230V | N/A |

| SEE SHEET ONE EC NO: IPG2016-0168 DRWN:BCAFFREY 2015/07/30 CHKD:DMAHER 2015/08/11 APPR:STGRIFLIN 2015/08/21 | QUALITY SYMBOLS ▼=0 ▽=0 | GENERAL TOLERANCES (UNLESS SPECIFIED) <table border="1"> <tr> <th></th> <th>mm</th> <th>INCH</th> </tr> <tr> <td>4 PLACES</td> <td>± .005</td> <td>± .0004</td> </tr> <tr> <td>3 PLACES</td> <td>± .008</td> <td>± .0003</td> </tr> <tr> <td>2 PLACES</td> <td>± 0.10</td> <td>± .004</td> </tr> <tr> <td>1 PLACE</td> <td>± 0.20</td> <td>± .008</td> </tr> </table> ANGULAR ± 2 ° | | mm | INCH | 4 PLACES | ± .005 | ± .0004 | 3 PLACES | ± .008 | ± .0003 | 2 PLACES | ± 0.10 | ± .004 | 1 PLACE | ± 0.20 | ± .008 | DIMENSION STYLE MM ONLY | SCALE 1.5:1 | DESIGN UNITS METRIC | THIRD ANGLE PROJECTION |
|---|-------------------------------|--|--------------------------------------|----------------------------|------|----------|--------|---------|----------|--------|---------|----------|--------|--------|---------|--------|--------|-----------------------------------|-----------------------|-------------------------------|------------------------|
| | | mm | INCH | | | | | | | | | | | | | | | | | | |
| | 4 PLACES | ± .005 | ± .0004 | | | | | | | | | | | | | | | | | | |
| | 3 PLACES | ± .008 | ± .0003 | | | | | | | | | | | | | | | | | | |
| 2 PLACES | ± 0.10 | ± .004 | | | | | | | | | | | | | | | | | | | |
| 1 PLACE | ± 0.20 | ± .008 | | | | | | | | | | | | | | | | | | | |
| DRAWN BY JOCONNOR | DATE 2011/05/31 | TITLE S11 SERIES INTERNAL THREAD | | | | | | | | | | | | | | | | | | | |
| CHECKED BY DMAHER | DATE 2011/05/31 | MOLEX INCORPORATED | | | | | | | | | | | | | | | | | | | |
| APPROVED BY EFOLAN | DATE 2011/06/22 | MATERIAL NO. SEE CHART | DOCUMENT NO. SD-121064-006 | SHEET NO. 2 OF 2 | | | | | | | | | | | | | | | | | |