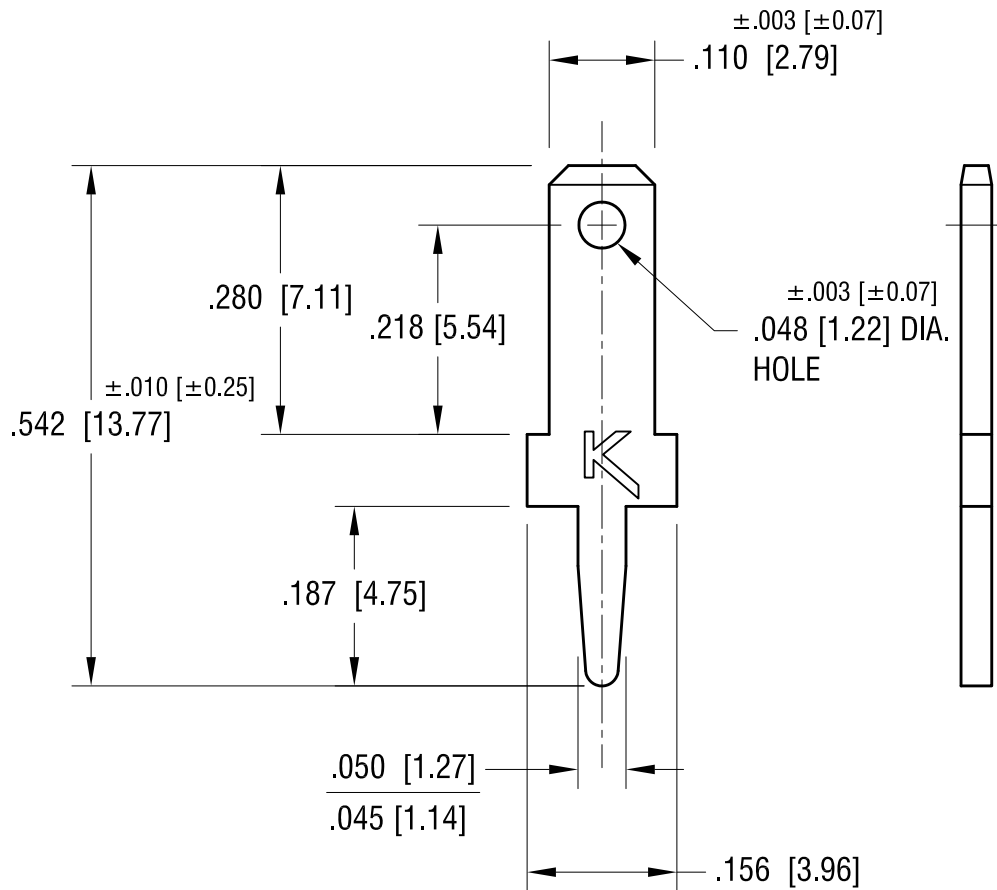



THIS DOCUMENT IS THE PROPERTY OF KEYSTONE ELECTRONICS CORP. AND SHALL NOT BE REPRODUCED, DISTRIBUTED OR USED AS A BASIS FOR MANUFACTURE WITHOUT PRIOR WRITTEN PERMISSION FROM KEYSTONE ELECTRONICS CORP.

ACTUAL SIZE



NOTE:

1. MOUNTING HOLE SIZE: .052 [1.32] DIA.
2.  FILE NUMBER: E201546

8.10.16	CHANGE AS PER ECR 16-045	D
8.21.12	CHANGE AS PER ECN 12-109	C
6.16.09	CHANGE AS PER ECN 09-071	B
12.14.98	CHANGE AS PER ECR 98-088	A
DATE	DESCRIPTION	REV.

<b>KEYSTONE ELECTRONICS CORP.</b>			
www.keyelco.com • ASTORIA, N.Y. 11105-2017 • Tel (718) 956-8900			
PART NAME		.110 PC QUICK-FIT TERMINAL	
MATERIAL		.032 [0.81] TH'K BRASS	
FINISH		DRN BY	DATE
MATTE TIN PLATE		BOONE	9.25.95
		APP'D	SCALE
		<b>MR</b>	5X
TOLERANCES	INCH [MM]	CODE	DWG NO.
DECIMAL	± .005 [± 0.15]	C	<b>1211</b>
ANGULAR	± 1°		
UNLESS OTHERWISE SPECIFIED			