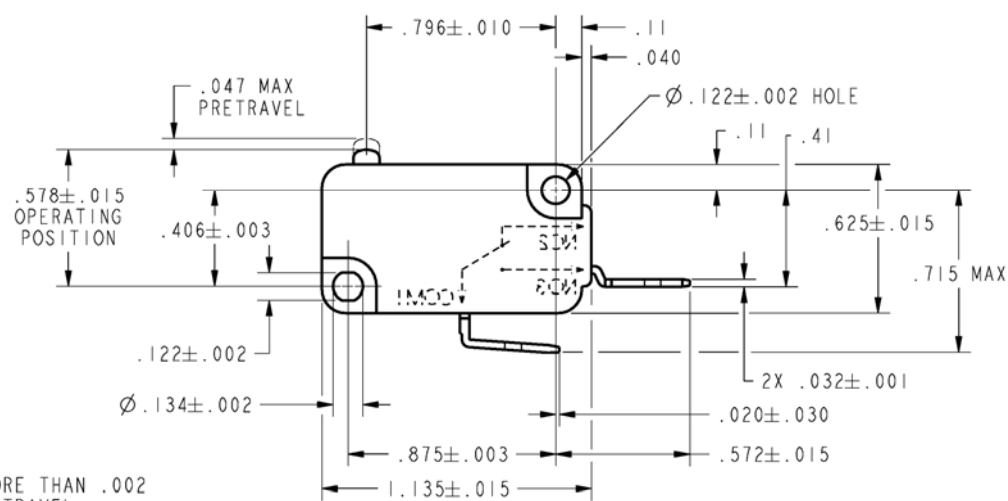
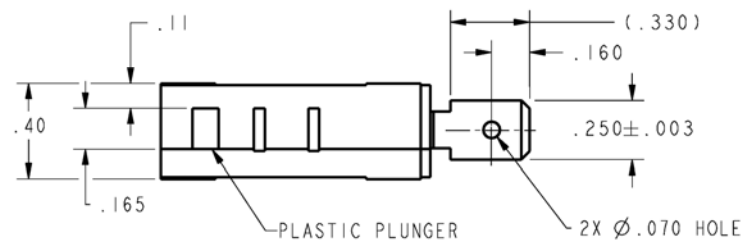


REV	DOCUMENT	CHANGED BY	CHECK
6	202161	DLT 18JAN01	SAV
7	207439	TSM 13FEB03	SAV



NOTE
1 - PLUNGER MUST NOT PROTRUDE MORE THAN .002 ABOVE CASE WHEN AT FULL OVERTRAVEL

CHARACTERISTICS
OPERATING FORCE-----160 GRAMS MAX
RELEASE FORCE-----20 GRAMS MIN
DIFFERENTIAL TRAVEL-----.002-.010
OVERTRAVEL-----.050 MIN
FREE POSITION -----.625 MAX
RELEASE TRAVEL-----.010 MIN

ELECTRICAL DATA
CONTACT ARRANGEMENT S P N O
21A 1HP 125, 250, 277 VAC 2HP 250, 277 VAC

UNLESS OTHERWISE SPECIFIED TOLERANCES ARE:
NO PLACE X ±.040 ±1
ONE PLACE .X ±.030 ±0,4
TWO PLACE .XX ±.015 ±0,15
THREE PLACE .XXX ±.005 ±
ANGLES ± ±
RAW MATERIAL-COMMERCIAL STANDARD
THIRD ANGLE PROJECTION

DRAWN	DLT	18JAN01
CHECK	SAV	18JAN01
THIS DRAWING COVERS A PROPRIETARY ITEM AND IS THE PROPERTY OF HONEYWELL. THIS DRAWING IS NOT TO BE COPIED OR USED WITHOUT THE PERMISSION OF HONEYWELL.		
DIMENSIONS ARE TO BE MET BEFORE PROTECTIVE COATINGS ARE APPLIED		
PTC 2D	ASME Y14.5M-1994	

Honeywell		TITLE		DRAWING NAME		REV
		SWITCH, BASIC		V7-IV20E9-000-1		7
SIZE	DWG TYPE	SCALE	WEIGHT	SHEET	OF	
B	I	2:1		1	OF	1