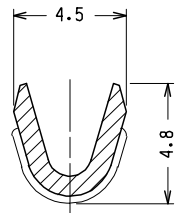
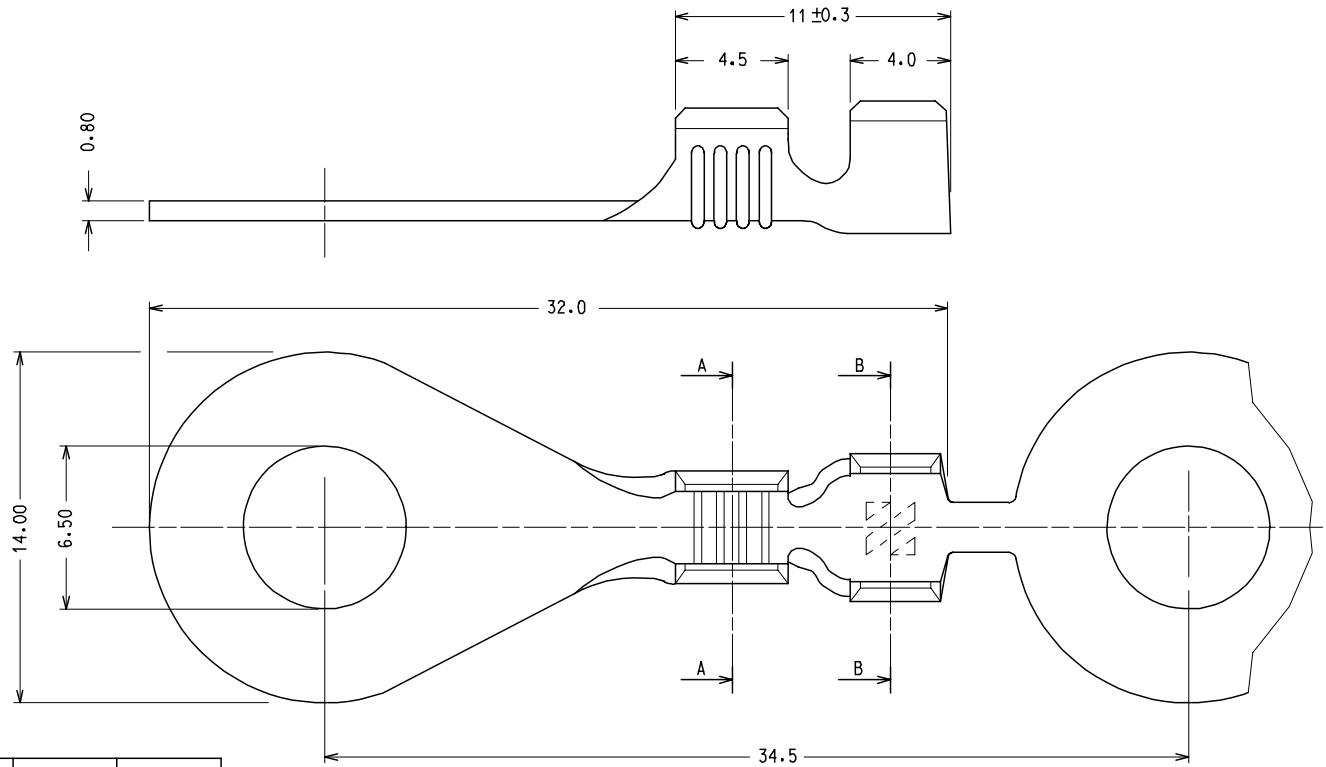


SECTION B - B



SECTION A - A



TIPO di CAVO TYPE of CABLE	Ø ISOLANTE Ø INSULATION	CODICE P / N	A	B
ISOLANTE STANDARD STANDARD INSULATION	2.7 - 4.3	94030-6970	5.9	5.3
ISOLANTE RIDOTTO REDUCED INSULATION	1.9 - 3.0	94030-6975	5.0	4.9

MATERIALE: OTTONE FINITURA: STAGNATO
 MATERIAL: BRASS PLATING: TIN

S.P.Q. = 6000 pz.

Std. Descr.: RING TONGUE TERM BRS TIN 6.5 D 1-2.5

EC NO: Z2005-0030 DRAWN: FGOTTARD 2004/09/23 CHKD: RSANDANO 2004/09/23 APPR: GZUIN 2004/09/23	QUALITY SYMBOLS ▽=0 ▽=0	GENERAL TOLERANCES (UNLESS SPECIFIED)		DIMENSION STYLE MM ONLY	SCALE 5:1	DESIGN UNITS METRIC	FIRST ANGLE PROJECTION		
		4 PLACES ± --- ± ---	3 PLACES ± --- ± ---	mm INCH	DRAWN BY FGOTTARD	DATE 1990/02/27	TITLE RING TONGUE TERMINAL WIRE RANGE 1.0-2.5 MMQ		
		2 PLACES ± 0.1 ± ---	1 PLACE ± 0.2 ± ---	ANGULAR ± 2 °	CHECKED BY	DATE	APPROVED BY MPREVIAT		
		DRAFT WHERE APPLICABLE MUST REMAIN WITHIN DIMENSIONS		SEE CHART	MATERIAL NO.	DATE 1990/02/27	DOCUMENT NO. SD-94030-059	SHEET NO. 1 OF 1	