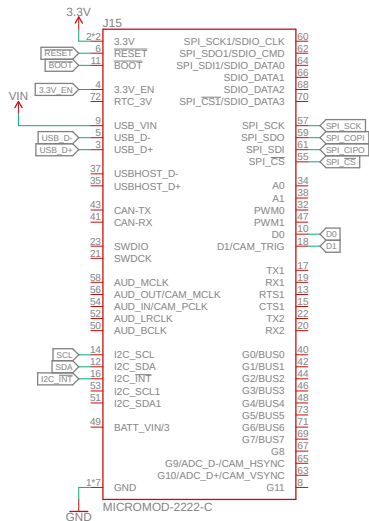
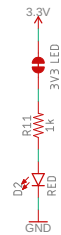


Universal MicroMod Connector



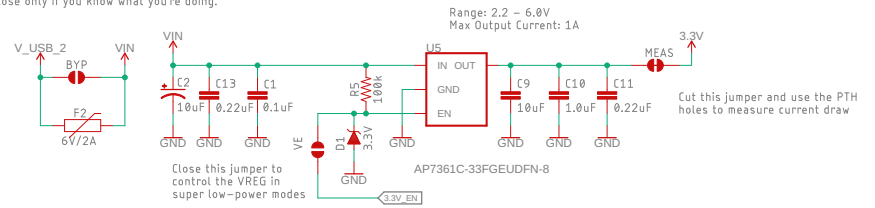
LED



Cut this jumper to remove power LED.

Voltage Regulation

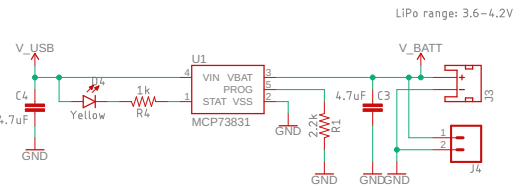
This is the penny-in-the-fuse jumper. Close only if you know what you're doing.



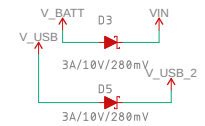
Close this jumper to control the VREG in super low-power modes

Cut this jumper and use the PTH holes to measure current draw

Battery Charger



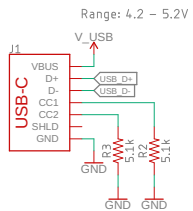
Power Source Select



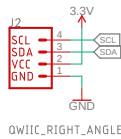
Test Points



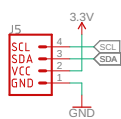
USB-C



Qwiic Connector



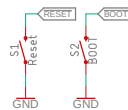
QWIIC_RIGHT_ANGLE



Vertical Qwiic Connector

Qwiic bus conservative max current: 226mA

Buttons



Qwiic Stand offs

Qwiic Board Outline

Qwiic Board Outline

Header



qwiic

open hardware

Released under the Creative Commons Attribution Share-Alike 4.0 License https://creativecommons.org/licenses/by-sa/4.0/		
TITLE: MM-Qwiic-Carrier-Double		
Design by: Priyanka Makin	REV: v1.0	
Date: 3/8/2021 8:58 AM	Sheet: 1/1	