

Light is OSRAM

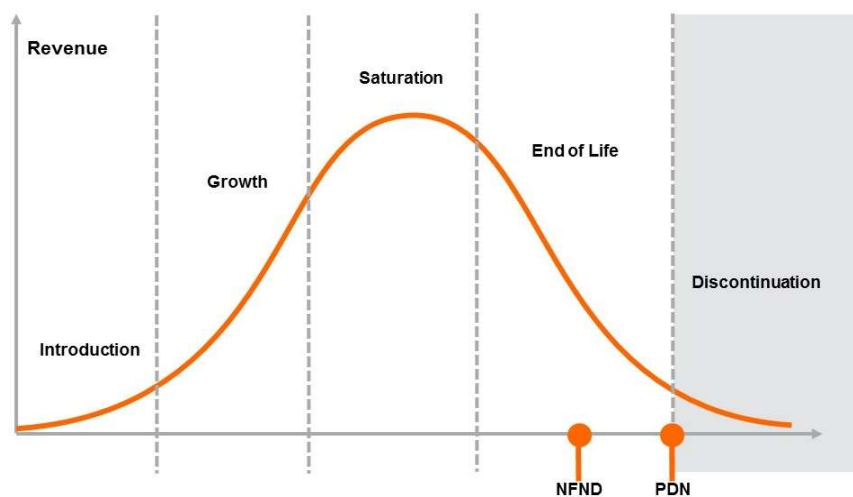
Product Or Individual Q-Code Discontinuation (acc. JEDEC J-STD-048)  
**OS-PDN-2021-016**

16 February 2021

---

Last order: 30 March 2021  
Last delivery: 31 May 2021

---



Please direct your feedback to your local Sales office.

| DISCONTINUED                      |               |             |                               | NEW (REPLACEMENT) |                         |       |
|-----------------------------------|---------------|-------------|-------------------------------|-------------------|-------------------------|-------|
| Device                            | Ordering Code | Brand       | Reason for discontinuation    | Device            | Datasheet Ordering Code | Brand |
| GWM JTLRSA.EM-0912-2210-1-100-R18 | Q65113A0188   | DURIS E2835 | Discontuniation of MMP Device | No Replacement    |                         |       |
| GWM JTLRSA.EM-1013-2708-1-100-R18 | Q65113A0194   | DURIS E2835 | Discontuniation of MMP Device | No Replacement    |                         |       |
| GWM JTLRSA.EM-1016-4005-1-100-R18 | Q65113A0195   | DURIS E2835 | Discontuniation of MMP Device | No Replacement    |                         |       |
| GWM JTLRSA.EM-1016-6501-1-100-R18 | Q65113A0196   | DURIS E2835 | Discontuniation of MMP Device | No Replacement    |                         |       |
| GWM JTLRSA.EM-1016-5003-1-100-R18 | Q65113A0197   | DURIS E2835 | Discontuniation of MMP Device | No Replacement    |                         |       |
| GWM JTLRSA.EM-1016-5702-1-100-R18 | Q65113A0198   | DURIS E2835 | Discontuniation of MMP Device | No Replacement    |                         |       |
| GWM JTLRSA.EM-1014-3007-1-100-R18 | Q65113A0204   | DURIS E2835 | Discontuniation of MMP Device | No Replacement    |                         |       |
| GWM JTL6SA.EM-1213-6501-1-60-R18  | Q65113A0205   | DURIS E2835 | Discontuniation of MMP Device | No Replacement    |                         |       |
| GWM JTL6SA.EM-1314-5702-1-60-R18  | Q65113A0206   | DURIS E2835 | Discontuniation of MMP Device | No Replacement    |                         |       |
| GWM JTL6SA.EM-1314-5003-1-60-R18  | Q65113A0207   | DURIS E2835 | Discontuniation of MMP Device | No Replacement    |                         |       |
| GWM JTL6SA.EM-1314-4005-1-60-R18  | Q65113A0208   | DURIS E2835 | Discontuniation of MMP Device | No Replacement    |                         |       |
| GWM JTL6SA.EM-1213-3007-1-60-R18  | Q65113A0209   | DURIS E2835 | Discontuniation of MMP Device | No Replacement    |                         |       |
| GWM JTL6SA.EM-1012-2708-1-60-R18  | Q65113A0210   | DURIS E2835 | Discontuniation of MMP Device | No Replacement    |                         |       |

| Device        | Product Descr.                    | Ordering Code | Repl. Product Descr. |
|---------------|-----------------------------------|---------------|----------------------|
| GWM JTLRSA.EM | GWM JTLRSA.EM-0912-2210-1-100-R18 | Q65113A0188   | none                 |
| GWM JTLRSA.EM | GWM JTLRSA.EM-1013-2708-1-100-R18 | Q65113A0194   | none                 |
| GWM JTLRSA.EM | GWM JTLRSA.EM-1016-4005-1-100-R18 | Q65113A0195   | none                 |
| GWM JTLRSA.EM | GWM JTLRSA.EM-1016-6501-1-100-R18 | Q65113A0196   | none                 |
| GWM JTLRSA.EM | GWM JTLRSA.EM-1016-5003-1-100-R18 | Q65113A0197   | none                 |
| GWM JTLRSA.EM | GWM JTLRSA.EM-1016-5702-1-100-R18 | Q65113A0198   | none                 |
| GWM JTLRSA.EM | GWM JTLRSA.EM-1014-3007-1-100-R18 | Q65113A0204   | none                 |
| GWM JTL6SA.EM | GWM JTL6SA.EM-1213-6501-1-60-R18  | Q65113A0205   | none                 |
| GWM JTL6SA.EM | GWM JTL6SA.EM-1314-5702-1-60-R18  | Q65113A0206   | none                 |
| GWM JTL6SA.EM | GWM JTL6SA.EM-1314-5003-1-60-R18  | Q65113A0207   | none                 |
| GWM JTL6SA.EM | GWM JTL6SA.EM-1314-4005-1-60-R18  | Q65113A0208   | none                 |
| GWM JTL6SA.EM | GWM JTL6SA.EM-1213-3007-1-60-R18  | Q65113A0209   | none                 |
| GWM JTL6SA.EM | GWM JTL6SA.EM-1012-2708-1-60-R18  | Q65113A0210   | none                 |