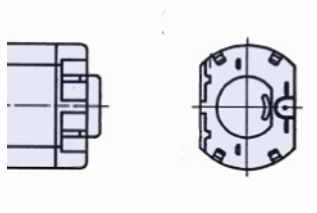
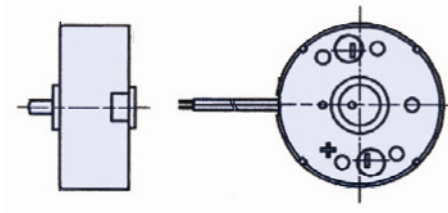


NMB BDC Motor Contact Types

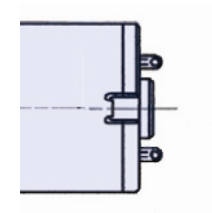
NMB Part No	Contact Type
M1N10	Terminal
MDN2	Lead Wire
MDN3	Lead Wire
MXN12	Terminal
MXN13	Terminal
PAN14	Internal
PKN12	Terminal
PKN7	Terminal
PNN13	Terminal
PNN7	Terminal
PPN13	Terminal
PPN7	Terminal
PWN10V	Internal



Internal Type



Leadwire Type



Terminal Type