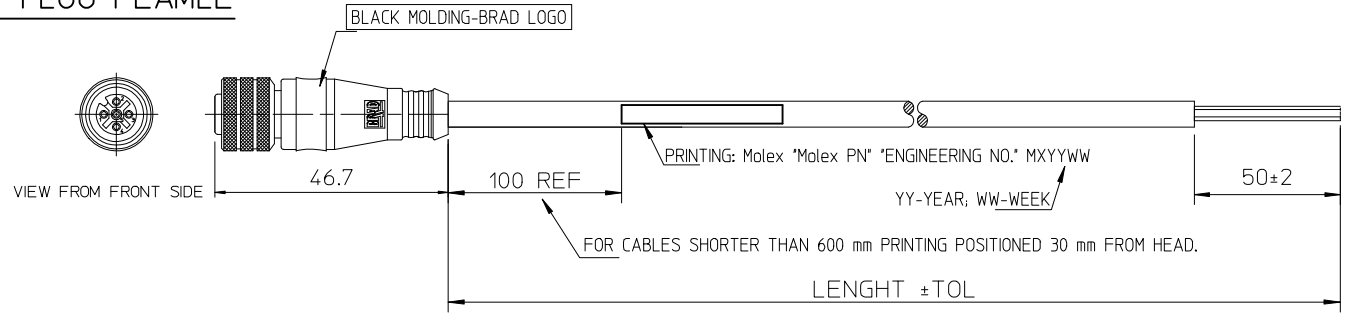


STRAIGHT PLUG FEAMLE

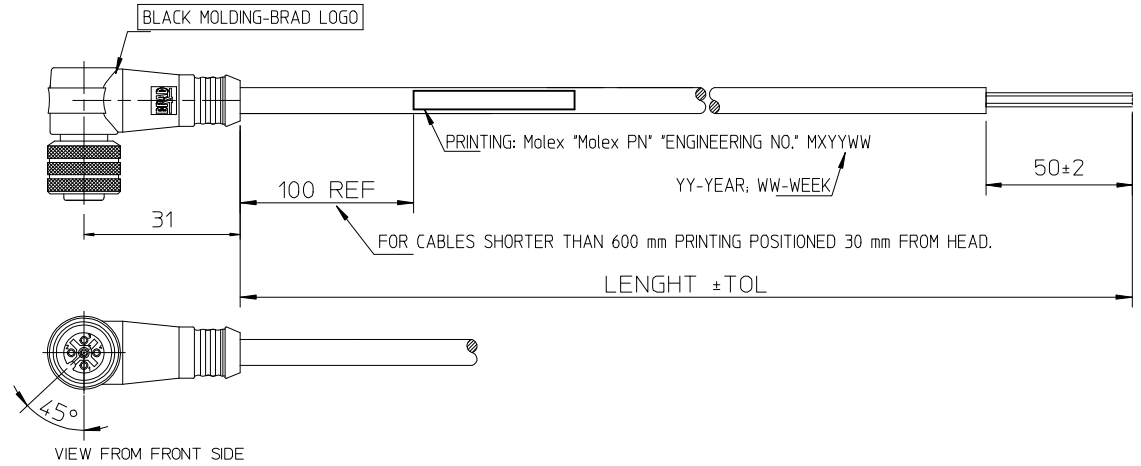
10 9 8 7 6 5 4 3 2 1

WIRING DIAGRAM M12 FEMALE:

3 WIRES		4 WIRES		5 WIRES	
VIEW FROM FRONT SIDE		VIEW FROM FRONT SIDE		VIEW FROM FRONT SIDE	
Pin	Wire color	Pin	Wire color	Pin	Wire color
1	Brown	1	Brown	1	Brown
2	-	2	White	2	White
3	Blue	3	Blue	3	Blue
4	Black	4	Black	4	Black
		5	Grey	5	Grey



90° - PLUG



ENGINEERING P/N KEY DECODING:

0	8	1	2	-	0	X	X	K	F	-	X	X	X	0	0
OVERMOULDED M12 FAMILY					NUMBER OF POLES		TYPE OF CONNECTOR		FEMALE CONNECTOR			LENGTH		TYPE OF CABLE	
					03-3 POLES 04-4 POLES 05-5 POLES		1-STRAIGHT 2-90°					01 = 1m 02 = 2m 05 = 5m 15 = 15m 20 = 20m 90 = 90m		01 = 0.6m 02 = 0.3m 05 = 2.5m 15 = 3.5m 20 = 7.5m 90 = 1.5m	
												1 = PVC BLACK 0.25mm² 2 = PUR/PVC BLACK 0.25mm² F = PUR BLACK 0.5mm² S = PUR BLACK 0.34mm² D = PUR BLACK 22AWG UL			

CABLE LENGTH IN METER	TILL/DO	OVER - TILL	OVER - TILL	OVER	OVER	OVER
	1m	1-5m	5-10m	10m	20m	30m
MANUFACTURING TOLERANCES MM						
M8/M12 CABLE CONNECTOR MALE OR FEMALE	+20 -10	+25	+30	+30	+50	+60
M8/M12 CABLE CONNECTOR JUMPERCABLE	+20 -10	+25	+30	+30	+50	+60
M23 CABLE CONNECTOR MALE OR FEMALE			+50	+50	+50	+60
M23 CABLE CONNECTOR JUMPERCABLE			+50	+50	+50	+60

PRINTING UPDATE EC NO: IPG2015-1471 DRWN: JMARSZALEK 2013/09/25 CHKD: MSZWAJKOWSKI 2013/09/25 APPR: MIWASIECZKO 2015/03/20	QUALITY SYMBOLS ▽=0 ◻=0	GENERAL TOLERANCES (UNLESS SPECIFIED)		DIMENSION STYLE MM ONLY		SCALE ---	DESIGN UNITS METRIC	FIRST ANGLE PROJECTION		
		4 PLACES ± --- ± --- 3 PLACES ± --- ± --- 2 PLACES ± --- ± --- 1 PLACE ± --- ± --- 0 PLACE ± --- ± ---	mm INCH	DRAWN BY HWALCZAK	DATE 2012/05/10	TITLE CSE M12 XP AC FE XM SE				
		DRAFT WHERE APPLICABLE MUST REMAIN WITHIN DIMENSIONS		APPROVED BY MDYSZEWSKA	DATE 2012/05/28	MATERIAL NO. SEE KEY			DOCUMENT NO. SD-120065-053	SHEET NO. 1 OF 1
		ANGLAR ± --- °		SIZE A3		THIS DRAWING CONTAINS INFORMATION THAT IS PROPRIETARY TO MOLEX INCORPORATED AND SHOULD NOT BE USED WITHOUT WRITTEN PERMISSION				

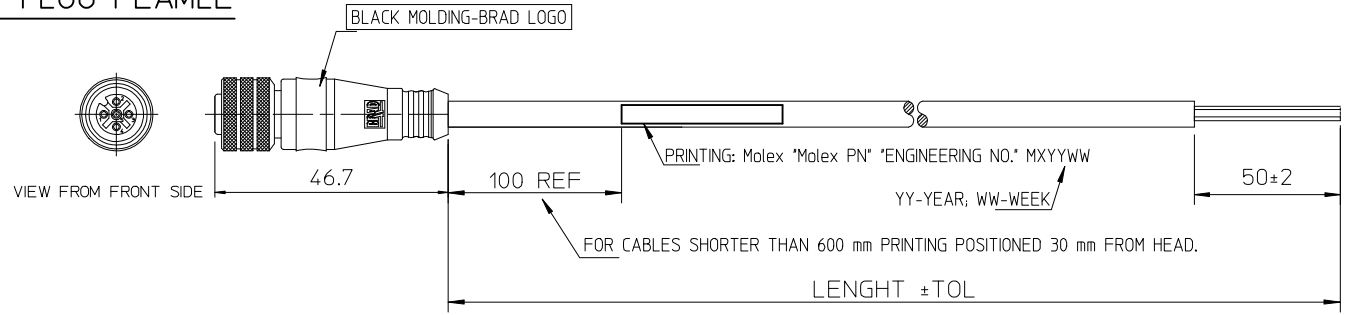
9 8 7 6 5 4 3 2 1

STRAIGHT PLUG FEAMLE

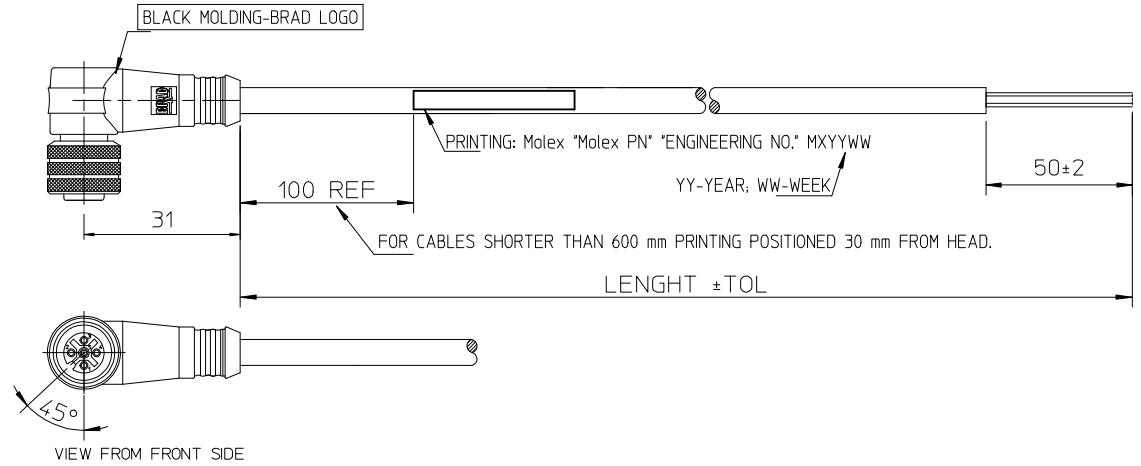
10 9 8 7 6 5 4 3 2 1

WIRING DIAGRAM M12 FEMALE:

3 WIRES		4 WIRES		5 WIRES	
VIEW FROM FRONT SIDE		VIEW FROM FRONT SIDE		VIEW FROM FRONT SIDE	
Pin	Wire color	Pin	Wire color	Pin	Wire color
1	Brown	1	Brown	1	Brown
2	-	2	White	2	White
3	Blue	3	Blue	3	Blue
4	Black	4	Black	4	Black
		5	Grey	5	Grey



90° - PLUG



ENGINEERING P/N KEY DECODING:

0	8	1	2	-	0	X	X	K	F	-	X	X	X	0	0
OVERMOULDED M12 FAMILY					NUMBER OF POLES		TYPE OF CONNECTOR		FEMALE CONNECTOR		LENGTH		TYPE OF CABLE		
					03-3 POLES 04-4 POLES 05-5 POLES		1-STRAIGHT 2-90°				01 = 1m 02 = 2 m 05 = 5 m 15 = 15 m 20 = 20 m 90 = 90 m		91 = 0.6 m 92 = 0.3 m 93 = 2.5 m 94 = 3.5 m 95 = 7.5 m		
													1 = PVC BLACK 0.25mm ² 2 = PUR/PVC BLACK 0.25mm ² E = PVC BLACK 0.5mm ² F = PUR BLACK 0.5mm ² S = PUR BLACK 0.34mm ² D = PUR BLACK 22AWG UL		

CABLE LENGTH IN METER	TILL/DO	OVER - TILL	OVER - TILL	OVER	OVER	OVER
	1m	1-5m	5-10m	10m	20m	30m
MANUFACTURING TOLERANCES MM						
M8/M12 CABLE CONNECTOR MALE OR FEMALE	+20 -10	+25	+30	+30	+50	+60
M8/M12 CABLE CONNECTOR JUMPERCABLE	+20 -10	+25	+30	+30	+50	+60
M23 CABLE CONNECTOR MALE OR FEMALE			+50	+50	+50	+60
M23 CABLE CONNECTOR JUMPERCABLE			+50	+50	+50	+60

PRINTING UPDATE EC NO: IPG2015-1471 DRWN: JMARSZALEK 2013/09/25 CHKD: MSZWAJKOWSKI 2013/09/25 APPR: MIWASIECZKO 2015/03/20	QUALITY SYMBOLS	GENERAL TOLERANCES (UNLESS SPECIFIED)	DIMENSION STYLE	SCALE	DESIGN UNITS	FIRST ANGLE PROJECTION	
	▼=0 ◻=0	mm INCH 4 PLACES ± --- ± --- 3 PLACES ± --- ± --- 2 PLACES ± --- ± --- 1 PLACE ± --- ± --- 0 PLACE ± --- ± ---	MM ONLY	---	METRIC	DRAWN BY: HWALCZAK DATE: 2012/05/10 CHECKED BY: _____ DATE: _____ APPROVED BY: MDYSZEWSKA DATE: 2012/05/28	TITLE: CSE M12 XP AC FE XM SE
		ANGULAR ± --- °	SEE KEY			MATERIAL NO. SD-120065-053 DOCUMENT NO. SD-120065-053 SHEET NO. 1 OF 1	
		DRAFT WHERE APPLICABLE MUST REMAIN WITHIN DIMENSIONS	THIS DRAWING CONTAINS INFORMATION THAT IS PROPRIETARY TO MOLEX INCORPORATED AND SHOULD NOT BE USED WITHOUT WRITTEN PERMISSION				

9 8 7 6 5 4 3 2 1