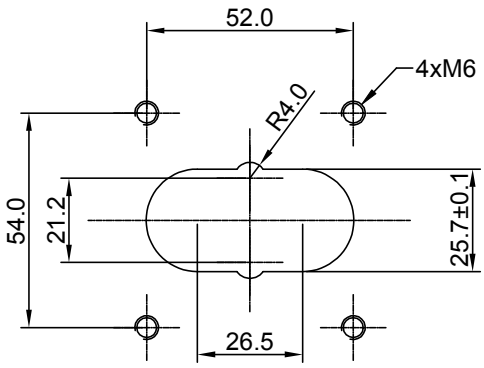
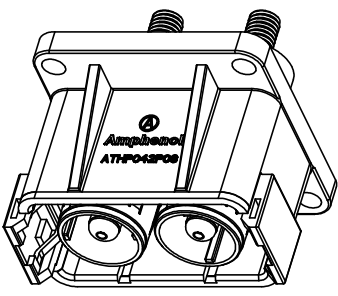
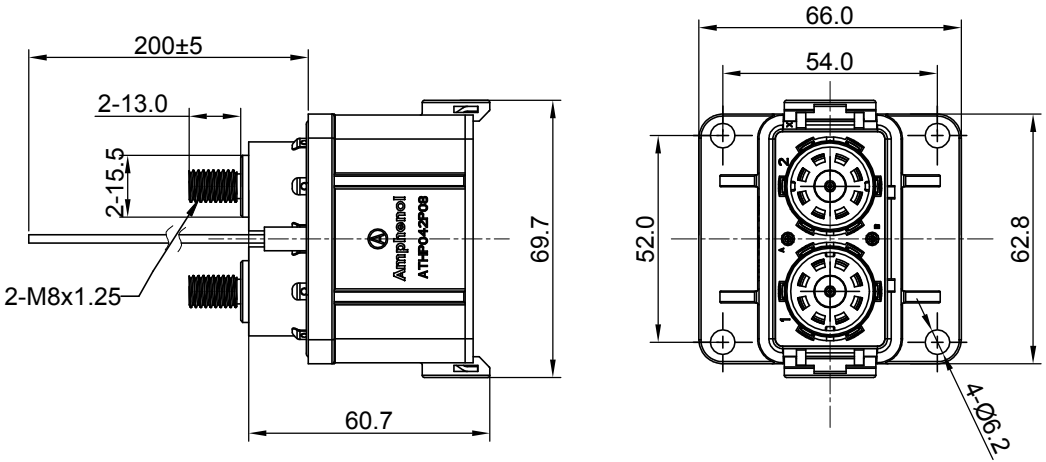


| REVISIONS | | | | | |
|-----------|-----|---------------------|-----------|-------|-------|
| REV | ECO | DESCRIPTION | DATE | BY | APPR |
| A1 | - | RELEASE NEW DRAWING | Dec.12.18 | Blink | Tommy |



RECOMMEND PANEL CUT

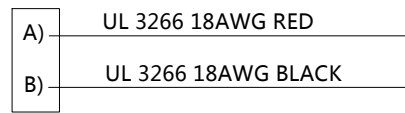
NOTES: UNLESS OTHERWISE SPECIFIED

- MATERIAL:
 - HOUSING: THERMOPLASTIC UL 94V0
 - SEAL: SILICONE RUBBER
 - POWER CONTACT: COPPER ALLOY, SILVER PLATED
 - SHIELDING: COPPER ALLOY, TIN PLATED
- SPECIFICATIONS:
 - CURRENT RATING: 180 AMPS
 - VOLTAGE RATING: 1000 V AC/DC
 - CONTACT RESISTANCE: 0.3 mΩ@POWER CONTACT
 - OPERATING TEMPERATURE: -40°C TO +130°C
 - DIELECTRIC WITHSTANDING VOLTAGE: LESS THAN 2 MILLIAMPS CURRENT LEAKAGE @ 3000 VOLTS AC.
 - INSULATION RESISTANCE: 500 MEGOHMS MIN@25°C.
 - DEGREE OF PROTECTION: IP67 (MATED CONDITION)
 - MATING CYCLE DURABILITY: 100 CYCLES
 - RoHS COMPLIANT

- SIGNAL CONTACT: RT SERIES 16# PIN CONTACT
POWER CONTACT: SC000384-8-M1

4. ALL DIMENSIONS ARE FOR REFERENCE USE ONLY.

Wiring Diagram



| QUANTITY | PART NUMBER | DESCRIPTION | ITEM |
|--|-------------|--|--|
| MATERIALS LIST | | | |
| <small>UNLESS OTHERWISE SPECIFIED</small> 1) All dimensions are in metric(mm). 2) Tolerances are as follows: 1 PL DEC ±0.30 Fractions ±1/64 2 PL DEC ±0.15 Angles ±1° 3 PL DEC ±0.08 3) Note reference = | | Amphenol Sine Systems - www.amphenol-sine.com 44724 Morley Drive Clinton Township, MI 48036 | |
| <small>MATERIAL SPECIFICATIONS:</small> <small>PROCESS SPECIFICATIONS:</small> <small>NEXT ASSY:</small> | | <small>SIGNATURES</small> DRAWN: Blink DATE: Dec.12.18 CHECKED: Tod DATE: Dec.12.18 APPROVAL: Tommy DATE: Dec.12.18 <small>CUSTOMER:</small> THIS DRAWING IS SUPPLIED FOR INFORMATION ONLY. DESIGN FEATURES, SPECIFICATIONS AND PERFORMANCE DATA SHOWN HEREON ARE THE PROPERTY OF THE AMPHENOL CORPORATION. NO RIGHTS OF REPRODUCTION ARE IMPLIED. ALL DIMENSIONS ARE SUBJECT TO NORMAL MANUFACTURING VARIATIONS. | |
| | | ATHP, RECEPTACLE,2 PIN,8MM FLANG MOUNTING WITH EMC SHIELDING | |
| | | <small>SIZE</small> B <small>TYPE</small> C- <small>DWG NO.</small> ATHP042P08EL16-M1 <small>REVISION</small> A1 | <small>SCALE:</small> NONE <small>SHEET</small> 1 of 1 |

TITLE: ATHP, RECEPTACLE, 2 PIN, 8MM, FLANG MOUNTING WITH EMC SHIELDING
DWG NO.: ATHP042P08EL16-M1
REV: A1
SH: 1
OF: 1

MagnaMate™ ATHP Standard - Contact Options

| Power Contacts - Machined Contacts, Sockets & Pins | | | | | |
|--|--|------|-------|----------|------|
| Part Number | Description | Size | AWG | Type | Amps |
| SC000383-8 | Female Contact - Socket, Gold-plated | 8mm | 50mm2 | Machined | 180A |
| SC000384-8 | Male Contact - Pin, Nickel-plated | 8mm | 50mm2 | Machined | 180A |
| SC000445-8 | Female Contact - Socket, Nickel-plated | 8mm | 50mm2 | Machined | 180A |
| SC000384-8-M1 | Male Contact - Pin, Gold-plated | 8mm | 50mm2 | Machined | 180A |

| Tooling - Machined Contacts | | |
|---|-------------|--|
| Part | Part Number | Description |
|  | WA23 | Heavy Duty Pneumatic Crimp Tool -Uses Universal Positioner Part No. WA23-101DA and Crimp Locator MFX-3961 |
|  | WA23-8 | Die Assembly -for WA23 Heavy Duty Pneumatic Crimp Tool |
|  | WA23-10 | Contact Locator, Size 50mm |
|  | 96-978-22 | Crimper and Dies -for Size 10mm ² -185mm ² Wires |
|  | QXATHP-50 | Contact Extraction Tool 50mm2 |

| Control Contacts - Crimp Contacts, Stamped & Formed | | | | |
|---|-----------|-------|-------------------------------|------------|
| Part Number | | AWG | Wire Range (mm ²) | Plating |
| Male | Female | | | |
| | SS14M2F | 14 | 2.0-2.5 | Gold Flash |
| | SS14M2G5 | 14 | 2.0-2.5 | Gold 5μ" |
| | SS14M2G10 | 14 | 2.0-2.5 | Gold 10μ" |
| | SS14M2G15 | 14 | 2.0-2.5 | Gold 15μ" |
| | SS14M2G30 | 14 | 2.0-2.5 | Gold 30μ" |
| SP16M2F | | 18-16 | 0.75-1.50 | Gold Flash |
| SP16M2G5 | | 18-16 | 0.75-1.50 | Gold 5μ" |
| SP16M2G10 | | 18-16 | 0.75-1.50 | Gold 10μ" |
| SP16M2G15 | | 18-16 | 0.75-1.50 | Gold 15μ" |
| SP16M2G30 | | 18-16 | 0.75-1.50 | Gold 30μ" |

| Tooling, Stamped & Formed | |
|---------------------------|--|
| Part Number | Description |
| QXRT16 | Contact Extraction Tool, #16 (Ø 1.6) Contact |
| MFX-3954 | Hand Tool, Stamped & Formed Contact, Size 16, 20-14AWG |
| MFX-3957 | Crimp Die for Stamped & Formed Contact |

Amphenol Sine Systems
 44724 Morley Drive
 Clinton Township, MI 48036 USA
www.amphenol-sine.com
 04/2022