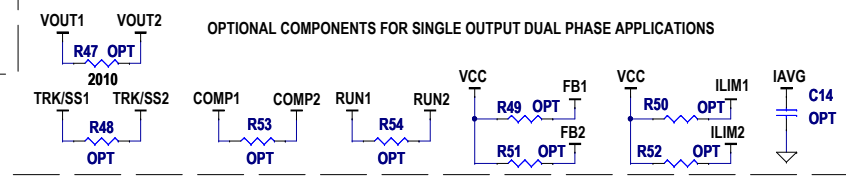
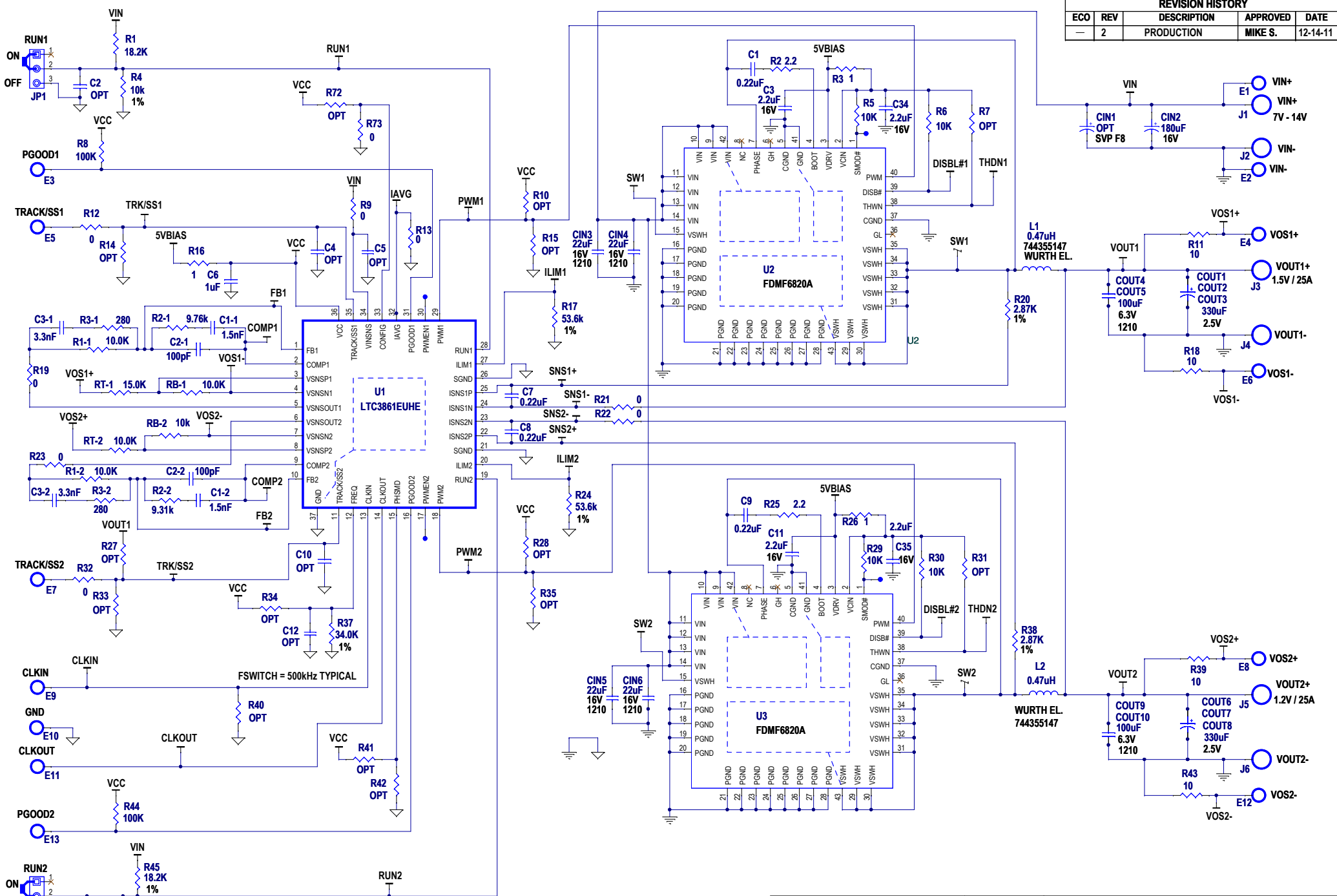


REVISION HISTORY				
ECO	REV	DESCRIPTION	APPROVED	DATE
-	2	PRODUCTION	MIKE S.	12-14-11



CUSTOMER NOTICE

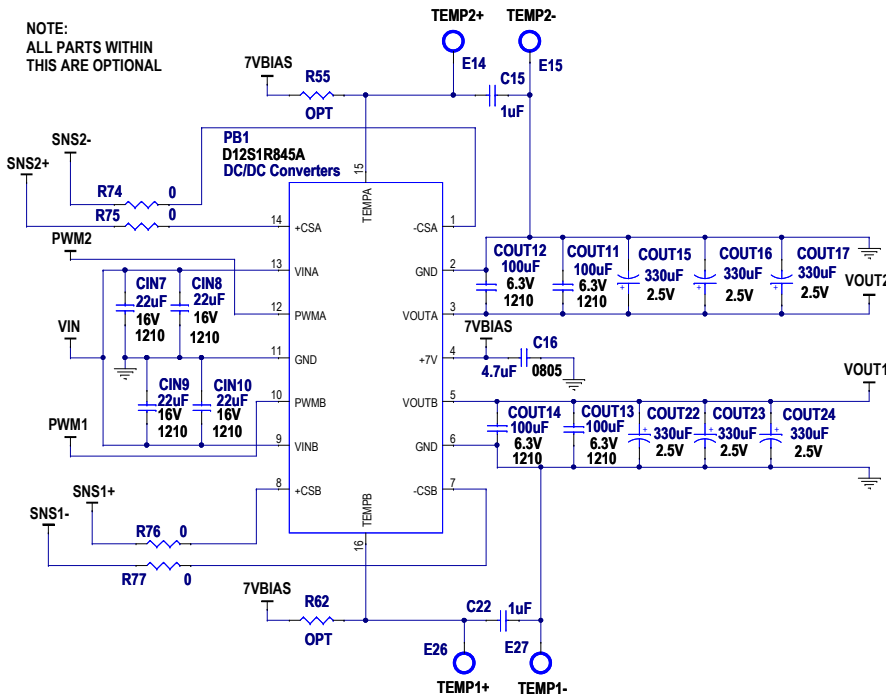
LINEAR TECHNOLOGY HAS MADE A BEST EFFORT TO DESIGN A CIRCUIT THAT MEETS CUSTOMER-SUPPLIED SPECIFICATIONS; HOWEVER, IT REMAINS THE CUSTOMER'S RESPONSIBILITY TO VERIFY PROPER AND RELIABLE OPERATION IN THE ACTUAL APPLICATION. COMPONENT SUBSTITUTION AND PRINTED CIRCUIT BOARD LAYOUT MAY SIGNIFICANTLY AFFECT CIRCUIT PERFORMANCE OR RELIABILITY. CONTACT LINEAR TECHNOLOGY APPLICATIONS ENGINEERING FOR ASSISTANCE.

THIS CIRCUIT IS PROPRIETARY TO LINEAR TECHNOLOGY AND SUPPLIED FOR USE WITH LINEAR TECHNOLOGY PARTS.

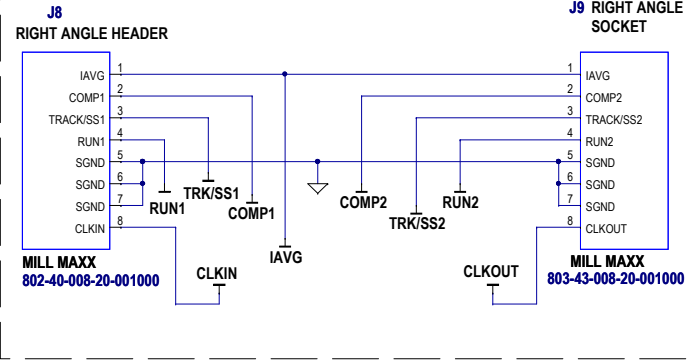
APPROVALS		TITLE: SCHEMATIC		1630 McCarthy Blvd. Milpitas, CA 95035 Phone: (408) 432-1900 www.linear.com Fax: (408) 434-0987 LTC Confidential-For Customer Use Only	
PCB DES.	A.K.	HIGH CURRENT DUAL OUTPUT SYNCHRONOUS BUCK CONVERTER		REV. 2	
APP ENG.	MIKE S.	LTC3861EUHE DEMO CIRCUIT 1822A		DATE: Monday, May 14, 2012	
SCALE = NONE		SIZE N/A		SHEET 1 OF 3	

OPTIONAL POWER BLOCK

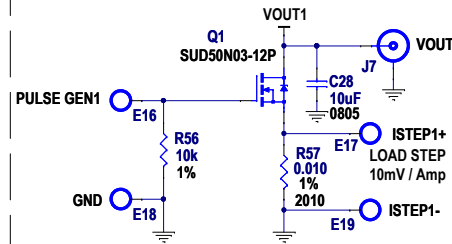
NOTE:
ALL PARTS WITHIN
THIS ARE OPTIONAL



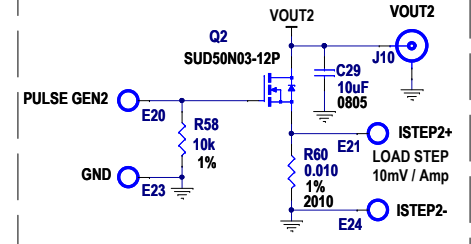
HEADER/SOCKET TO PARALLEL DC1822A TO ANOTHER DC1822A



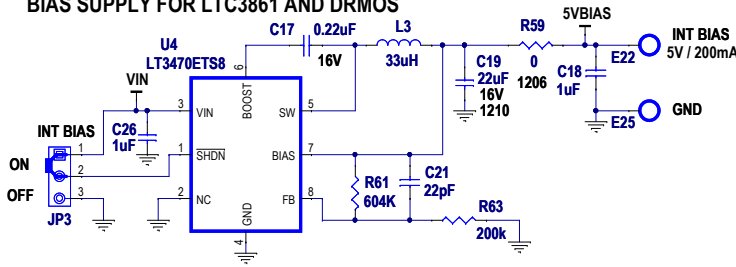
DYNAMIC LOAD CIRCUIT FOR VOUT1



DYNAMIC LOAD CIRCUIT FOR VOUT2

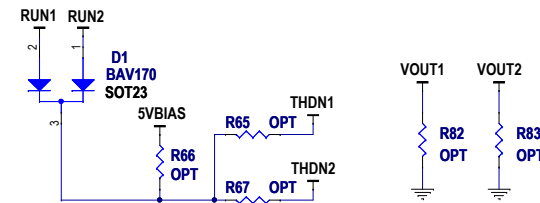


BIAS SUPPLY FOR LTC3861 AND DRMOS



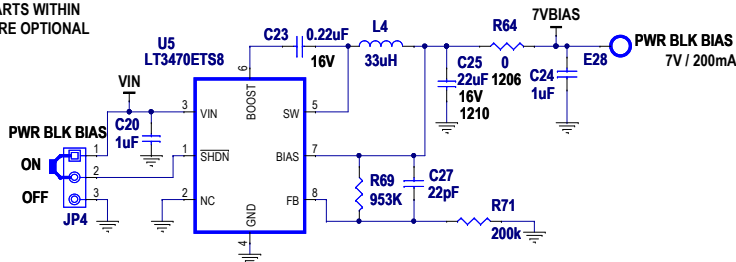
NOTE:
ALL PARTS WITHIN
THIS ARE OPTIONAL

UVLO CIRCUIT



OPTIONAL BIAS SUPPLY FOR POWER BLOCK

NOTE:
ALL PARTS WITHIN
THIS ARE OPTIONAL



CUSTOMER NOTICE

LINEAR TECHNOLOGY HAS MADE A BEST EFFORT TO DESIGN A CIRCUIT THAT MEETS CUSTOMER-SUPPLIED SPECIFICATIONS; HOWEVER, IT REMAINS THE CUSTOMER'S RESPONSIBILITY TO VERIFY PROPER AND RELIABLE OPERATION IN THE ACTUAL APPLICATION. COMPONENT SUBSTITUTION AND PRINTED CIRCUIT BOARD LAYOUT MAY SIGNIFICANTLY AFFECT CIRCUIT PERFORMANCE OR RELIABILITY. CONTACT LINEAR TECHNOLOGY APPLICATIONS ENGINEERING FOR ASSISTANCE.

THIS CIRCUIT IS PROPRIETARY TO LINEAR TECHNOLOGY AND SUPPLIED FOR USE WITH LINEAR TECHNOLOGY PARTS.

APPROVALS

PCB DES.	A.K.
APP ENG.	MIKE S.
SCALE = NONE	



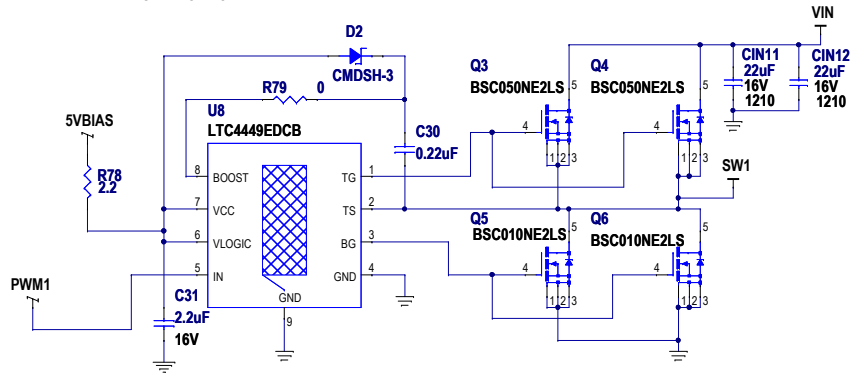
1630 McCarthy Blvd.
Milpitas, CA 95035
Phone: (408)432-1900 www.linear.com
Fax: (408)434-0507
LTC Confidential-For Customer Use Only

TITLE: SCHEMATIC **HIGH CURRENT DUAL OUTPUT SYNCHRONOUS BUCK CONVERTER**

SIZE N/A IC NO. **LTC3861EUHE** REV. **2**
DATE: **Wednesday, March 28, 2012** SHEET **2** OF **3**

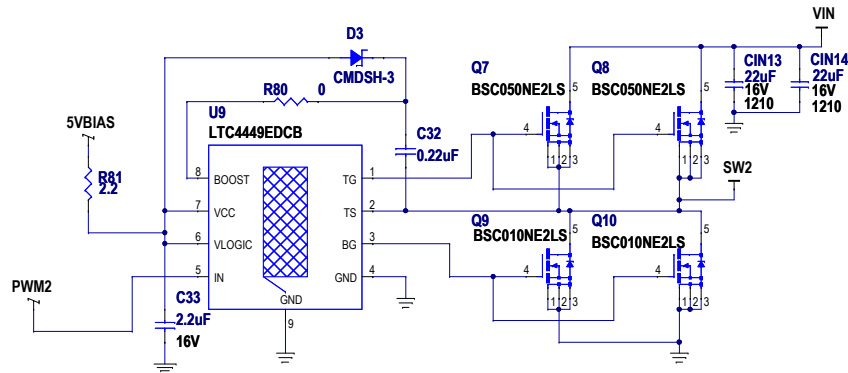
OPTIONAL DISCRETE GATE DRIVER AND MOSFETS FOR PHASE 1

NOTE:
ALL PARTS WITHIN
THIS ARE OPTIONAL



OPTIONAL DISCRETE GATE DRIVER AND MOSFETS FOR PHASE 2

NOTE:
ALL PARTS WITHIN
THIS ARE OPTIONAL



CUSTOMER NOTICE		APPROVALS		LINEAR TECHNOLOGY		1630 McCarthy Blvd. Milpitas, CA 95035 Phone: (408)432-1900 www.linear.com Fax: (408)434-0507 LTC Confidential-For Customer Use Only	
LINEAR TECHNOLOGY HAS MADE A BEST EFFORT TO DESIGN A CIRCUIT THAT MEETS CUSTOMER-SUPPLIED SPECIFICATIONS; HOWEVER, IT REMAINS THE CUSTOMER'S RESPONSIBILITY TO VERIFY PROPER AND RELIABLE OPERATION IN THE ACTUAL APPLICATION. COMPONENT SUBSTITUTION AND PRINTED CIRCUIT BOARD LAYOUT MAY SIGNIFICANTLY AFFECT CIRCUIT PERFORMANCE OR RELIABILITY. CONTACT LINEAR TECHNOLOGY APPLICATIONS ENGINEERING FOR ASSISTANCE.				PCB DES.	A.K.	TITLE: SCHEMATIC	
				APP ENG.	MIKE S.	HIGH CURRENT DUAL OUTPUT SYNCHRONOUS BUCK CONVERTER	
				SCALE = NONE	DATE: Wednesday, December 14, 2011	IC NO. LTC3861EUHE	REV. 2
THIS CIRCUIT IS PROPRIETARY TO LINEAR TECHNOLOGY AND SUPPLIED FOR USE WITH LINEAR TECHNOLOGY PARTS.				SHEET 3 OF 3		DEMO CIRCUIT 1822A	