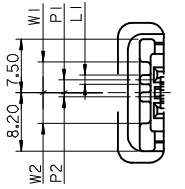
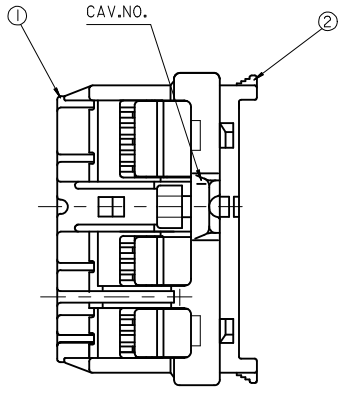


7 6 5 4 3 2 1

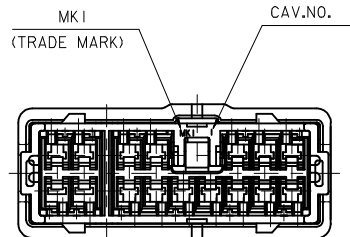
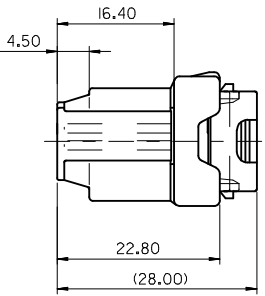
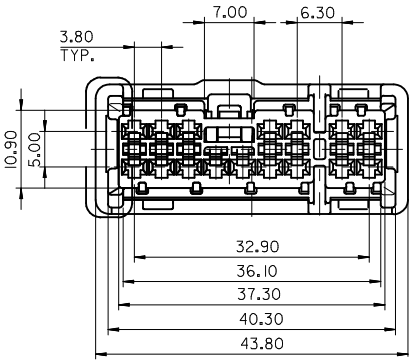


POLARIZED GUIDE RIBS



ENG.NO.	DIMENSIONS					COLOR
	L1	P1	P2	W1	W2	
35284-1690	--- (NO RIB)			4.20	2.70	NATURAL
35284-1695	1.30	1.80	---	4.30	4.30	GRAY
35284-1697	1.30	---	0.60	4.30	4.30	BROWN

	PART NO.	PART NAME	MATERIAL
①	35284-169*	UNICONN FEMALE HOUSING-16P	PBT
②	35285-168 I	UNICONN FEMALE TPA-16P	PBT, BLACK



MATERIAL NO.	ORDER NO.	COLOR
352841610	35284-1610	NATURAL
352841615	35284-1615	GRAY
352841617	35284-1617	BROWN

REVISED EC NO: KTR2015-0033 DRWN: JKSE001 2014/11/24 CHKD: APPR: JYCH01 2014/12/05	DESCRIPTION B1	QUALITY SYMBOLS	GENERAL TOLERANCES (UNLESS SPECIFIED)	DIMENSION STYLE	SCALE	DESIGN UNITS	THIRD ANGLE PROJECTION	
		▼=0 ▽=0	mm INCH 4 PLACES ± --- ± --- 3 PLACES ± --- ± --- 2 PLACES ± --- ± --- 1 PLACE ± 0.30 ± --- ANGULAR ± 1 °	MM ONLY	1:1	METRIC		
		DRAFT WHERE APPLICABLE MUST REMAIN WITHIN DIMENSIONS			DRAWN BY DATE WYYANG 97/11/17 CHECKED BY DATE BKCHOI 97/11/17 APPROVED BY DATE CWLEE 97/11/17	TITLE UNICONN FEMALE ASS'Y - 16P		
					MATERIAL NO. SEE TABLE	DOCUMENT NO. SD-35284-1610		SHEET NO. 1 OF 1

6 5 4 3 2 1

