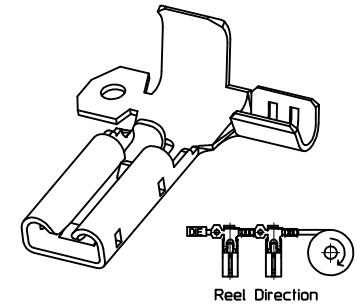
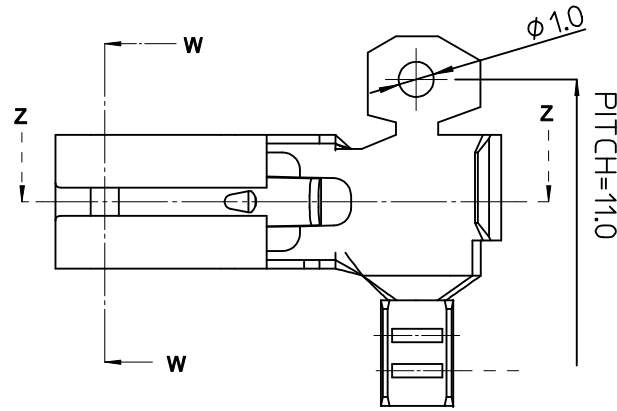
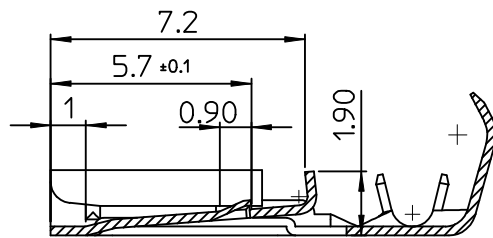
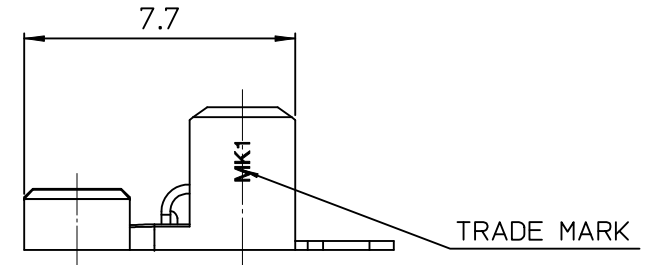
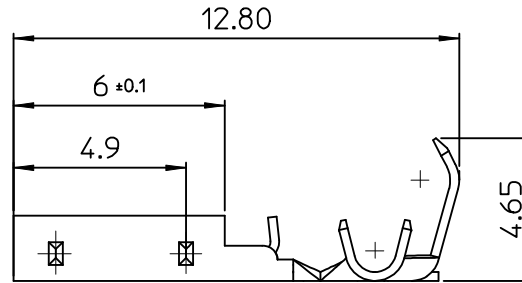
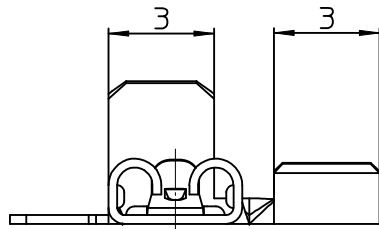


SECTION W-W



NOTES

1. MATERIAL : BRASS
2. FINISH : PRE-TIN PLATED
0.8~1.8 μ m TIN PLATING
OVERALL 0.3~0.8 μ m COPPER PLATING
3. PRODUCT SPECIFICATION : PS-104441-001
4. PACKING SPECIFICATION : PK-104441-001
5. CRIMPING SPECIFICATION : CS-104441-001
6. MATED TAB : 0.5 t
7. APPLICABLE WIRE RANGE :
AWG #24 (UL1007)
AWG #24+AWG #24 (UL1061)



SECTION Z-Z

<p>NEW RELEASED EC NO: KOR2009-0084 DRAWN: JHPARK01 2009/03/02 CHKD: W. YANG 2009/03/02 APPR: YUNSIKIM 2009/03/02</p>	<p>QUALITY SYMBOLS ▽=0 ▽=0</p>	GENERAL TOLERANCES (UNLESS SPECIFIED)		DIMENSION STYLE	SCALE	DESIGN UNITS	THIRD ANGLE PROJECTION		
				MM ONLY	7:1	METRIC			
				4 PLACES ± --- ± ---	3 PLACES ± --- ± ---	DRAWN BY DATE		.110 P-LOCK FLAG TERMINAL	
				2 PLACES ± 0.20 ± ---	1 PLACE ± 0.30 ± ---	JH. PARK 2009/02/27			
		ANGULAR ± 1 °		CHECKED BY DATE		MOLEX INCORPORATED			
		DRAFT WHERE APPLICABLE MUST REMAIN WITHIN DIMENSIONS		WY. YANG 2009/02/27					
				APPROVED BY DATE		SD-104441-001			
				EH. JUNG 2009/02/37					
				MATERIAL NO.		DOCUMENT NO.			
				SEE NOTES		SHEET NO.			
				SIZE A3		1 OF 01			