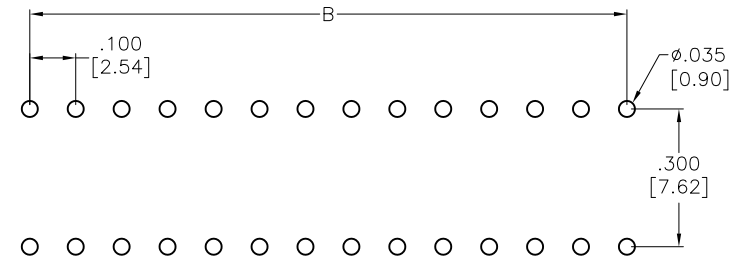
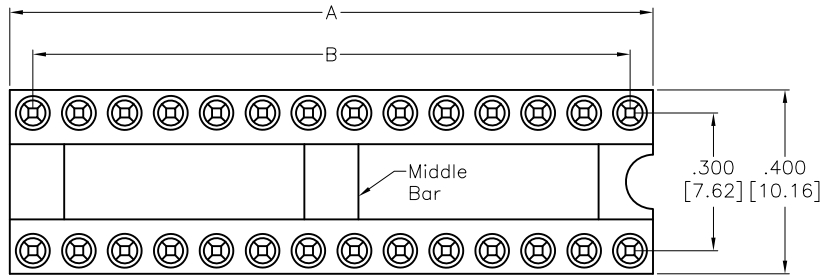
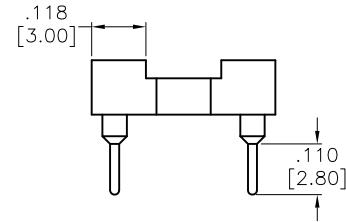
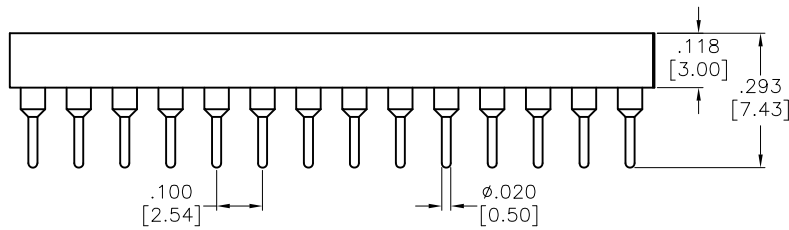


APPROVED: _____
 DATE: _____ TITLE: _____

Rev	AWO #	Description	Date	Appr
-		RELEASED	5/19/08	
A		REVISED SPEC.	10/25/11	
B		REDRAWN	11/01/11	
C		REDRAWN	10/16/15	AY/TW
D		UPDATE SPEC.	11/5/18	AY/RC
E		UPDATE SPEC.	1/27/21	OW/EY



RECOMMENDED PCB LAYOUT



SPECIFICATIONS:
 Material:
 Insulator: (PPS) Hi-Temp Thermoplastic, rated UL 94V-0
 Insulator color: Black
 Pin (Outer Sleeve): Brass
 Clip (Contact 4 finger): Beryllium Copper
 Plating:
 Inner contact: Gold flash over Nickel underplate
 Outer sleeve: Tin over Nickel underplate overall
 Electrical :
 Operating voltage : 60VAC/DC
 Current rating : 3 Amps/contact max.
 Current resistance : $\leq 4m\Omega$ / contact
 Insulation resistance : $\geq 1,000M\Omega$ at 100 V
 Mechanical :
 Operating temperature : Gold plated : -55°C to + 105°C
 Tin plated : -40°C to + 105°C
 Average insertion force : < 250g
 With steel pin of $\phi 0.017 [0.43mm]$
 Average withdrawal force : > 20g min.
 With steel pin of $\phi 0.017 [0.43mm]$
 Mechanical life : 200 Cycle min.
 Environmental:
 Lead free, RoHS compliant



Series	POSITION	A	B	MIDDLE BAR
ICM-3XX	6	.300 [7.62]	.200 [5.08]	WITHOUT
	8	.400 [10.16]	.300 [7.62]	
	10	.500 [12.70]	.400 [10.16]	
	12	.600 [15.24]	.500 [12.70]	
	14	.700 [17.78]	.600 [15.24]	
	16	.800 [20.32]	.700 [17.78]	
	18	.900 [22.86]	.800 [20.32]	WITH
	20	1.000 [25.40]	.900 [22.86]	
	24	1.200 [30.48]	1.100 [27.94]	
	28	1.400 [35.56]	1.300 [33.02]	

UNLESS OTHERWISE SPECIFIED
 ALL DIMENSIONS ARE INCHES [MM]
 TOLERANCES: EXCEPT AS NOTED
 INCHES HOLES
 .X ± .10 Ø.X ± .10
 .XX ± .020 Ø.XX ± .015
 .XXX ± .015 Ø.XXX ± .010



909 Rahway Avenue,
 Union, NJ 07083
 Phone: 908-687-5000
 Fax: 908-687-5710

APPROVALS		DATE
DRAWN	SS	5/19/08
CHECKED		
APPROVED		

TITLE SCREW MACHINE IC SOCKET .300" ROW SPACING			
SIZE X	PART NO. ICM-3XX-1-GT-HT	REV. E	
REF: S00145C	SCALE: NTS	SHEET 1 OF 1	