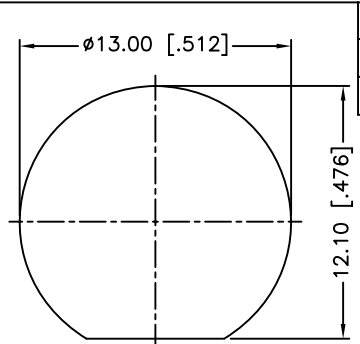
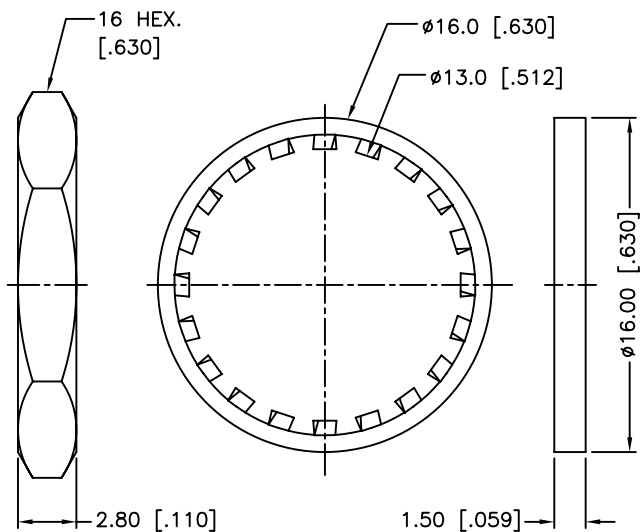


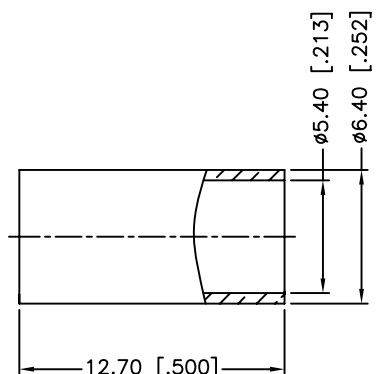
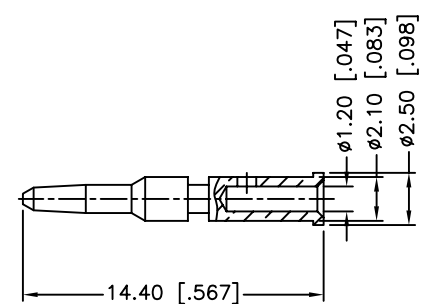
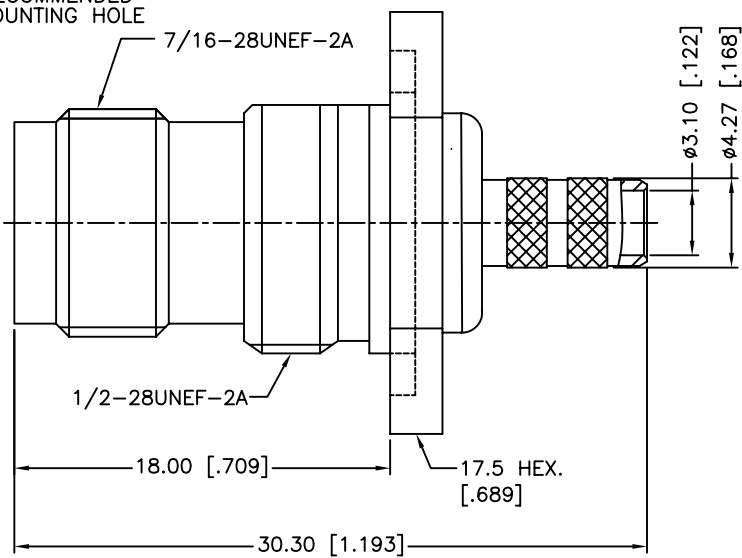
RECOMMENDED  
CABLE STRIPPING DIM'S



REV.	DATE	ECR NO.	DESCRIPTION
NC	06/10/04	XXXXXX	INITIAL RELEASE
A	06/13/13	2480	UPDATE DRAWING FORMAT,ADD ELECTRICAL AND MECHANICAL NOTES



RECOMMENDED  
MOUNTING HOLE



1. IMPEDANCE: 50 OHM
2. FREQUENCY RANGE: 0-11 GHZ
3. DIELECTRIC WITHSTANDING VOLTAGE: 1500 VRMS, MIN.
4. DURABILITY: 500 CYCLES MIN.
5. TEMPERATURE RANGE: -65°C TO +165°C
6. CRIMPED FERRULE  
HEX. CRIMP SIZE .213"
7. CRIMPED CONTACT PIN  
HEX. CRIMP SIZE .068"

QTY	DESCRIPTION	MATERIAL	FINISH	QTY
3	FERRULE	BRASS	NICKEL	1
2	CONTACT PIN	BRASS	GOLD	1
1	HEX NUT	BRASS	NICKEL	1
3	LOCK WASHER	BRASS	NICKEL	1
2	GASKET	SILICONE RUBBER	NATURAL	1
1	BARREL	BRASS	NICKEL	1
3	INSULATOR	PTFE	NATURAL	1
2	BODY	BRASS	NICKEL	1
1	HOUSING	BRASS	NICKEL	1

UNLESS OTHERWISE SPECIFIED DIMENSIONS ARE IN MILLIMETERS. DIMENSIONS IN [ ] ARE IN INCHES AND FOR CUSTOMER REFERENCE ONLY.  
UNLESS OTHERWISE SPECIFIED  
TOLERANCES FOR MILLIMETERS ARE:  
<0.5 ± 0.05mm  
0.5 - 6mm ± 0.10mm  
6 - 30mm ± 0.20mm  
30 - 120mm ± 0.30mm  
ANGLES ± 1°  
UNLESS OTHERWISE SPECIFIED  
TOLERANCES FOR INCHES ARE:  
<.020 ± 0.002"  
.020 - .236 = ± 0.004"  
.236 - 1.180 = ± 0.007"  
1.180 - 4.724 = ± 0.012"  
ANGLES ± 1°  
DO NOT SCALE DRAWING

APPROVALS	DATE
DRAWN M.ZHANG	06/13/13
CHECKED	
ISSUED	
SHEET 1 OF 1	
CAD FILE C:/CONNEX/122413RP.DWG	

<h1>Amphenol Connex</h1>			
PART DESCRIPTION <b>TNC REVERSE POLARITY BULKHEAD CRIMP JACK (FOR LMR-200 CABLE)</b>			
PART NO. <b>122413RP</b>			
DWG. NO.	122413RP.DWG	REV.	A
SIZE	A	SCALE	NA