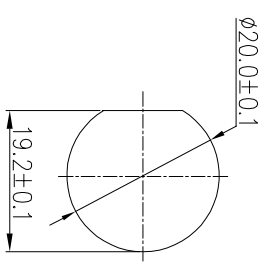
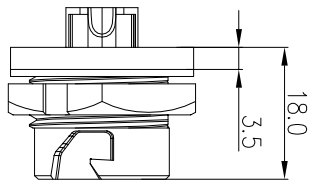


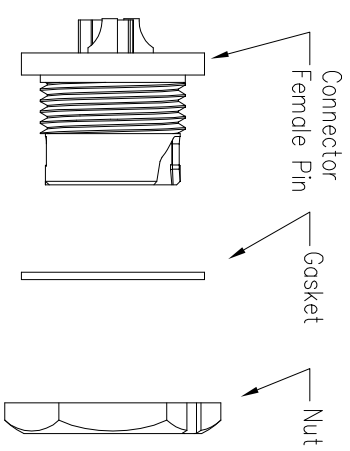
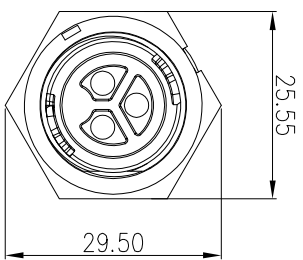
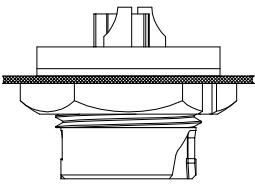
REV.	EON NO.	DESCRIPTION	SIGN	DATE
C1	N/A	INITIAL DRAWING	Liu	2019/08/13



Recommended Panel Cut-Out

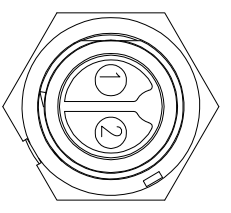


Panel T: Max 2.5



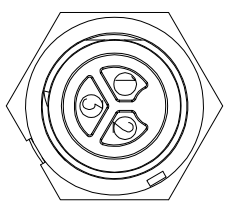
**Specification:**

1. Operation Temperature:  $-45^{\circ}\text{C} \sim 105^{\circ}\text{C}$ .
2. Insulation Resistance:  $100\text{M}\Omega$  at DC500V.
3. Contact Resistance:  $<10\text{m}\Omega$
4. Withstand Voltage: 2000V AC
5. Operating Current: 20A
6. Operating Voltage: AC 300V
7. Waterproof Rate: IP67 (Mated)
8. Housing: Nylon, Black
9. Female Pin: Copper Alloy, Gold Plated
10. Gasket: Silicon Gray
11. Panel Nut: Nylon, Blue
12. Torque Rate:  $0.8 \sim 1.0\text{N} \cdot \text{m}$
13. RoHS Compliant
14. UL Compliant
15. Mating Cap P/N: 806-00047-00



2 Pin

P/N: 23002635-01



3 Pin

P/N: 23003635-01

Pin Assignments Front View



UNIT: mm	
TOLERANCE	
.X	$\pm 0.25$
.XX	$\pm 0.15$
.XXX	$\pm 0.05$
ANGLES	$\pm 1^{\circ}$

**DESCRIPTION**

Middle Series Push Lock  
Front Mount With Female Pin

SCALE	1:1
REV.	C1
SIZE	A4
SHEET	1 OF 1
* : Inspection Item	

**CHOGORI**

PART NO 23XXXX635-01

DRAWN BY Liu

DATE 2019/08/13

DWG NO

CHECKED BY MIO

DATE 2019/08/13

CUSTOMER

APPROVED BY Panson

DATE 2019/08/13