

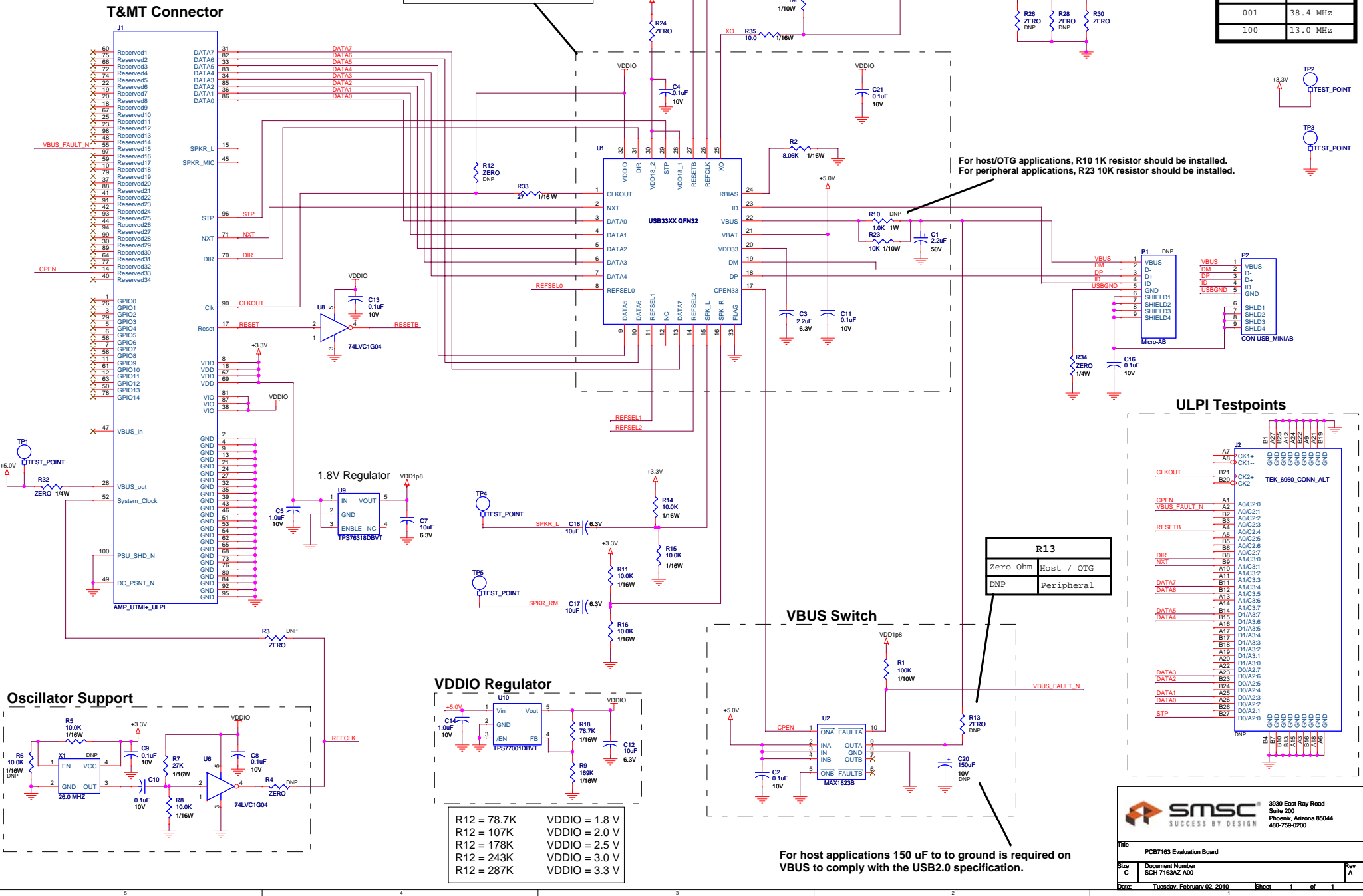
# Selectable Frequency 32-pin QFN Evaluation Board

Transceiver	R24	C3	C19
USB3320	ZERO	2.2uF	0.1uF
USB83340	DNP	1.0uF	1.0uF

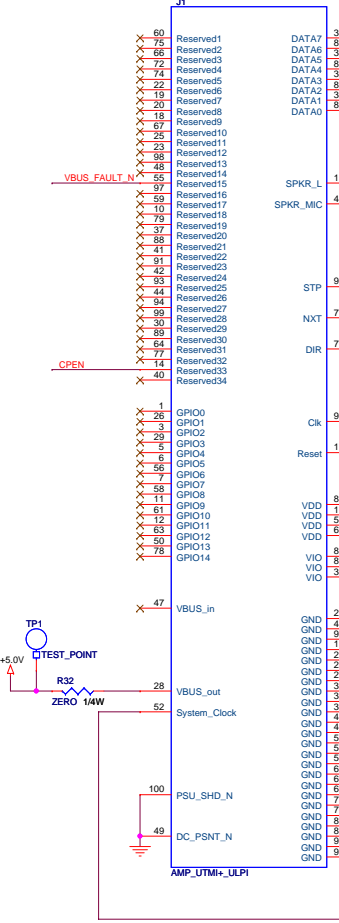
This portion of the schematic shows components needed for PHY to operate in a HS peripheral application.

Schematic shows 26.0 MHz Configuration.  
REFCLK[2:0] = 110

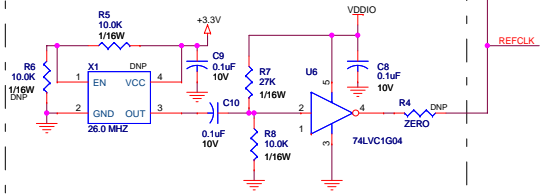
REFSEL[ 2:0]	REFCLK Source
110	26.0 MHz
010	12.0 MHz
000	52.0 MHz
111	24.0 MHz
101	19.2 MHz
011	27.0 MHz
001	38.4 MHz
100	13.0 MHz



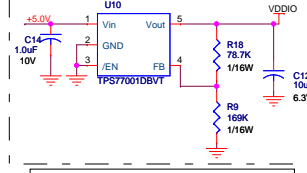
## T&M Connector



## Oscillator Support

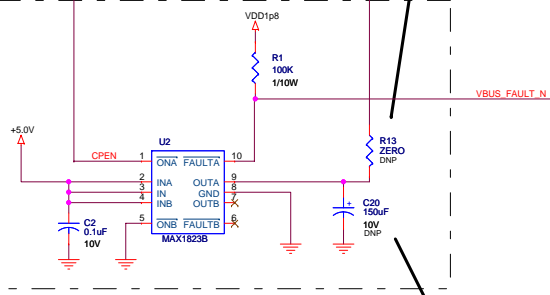


## VDDIO Regulator



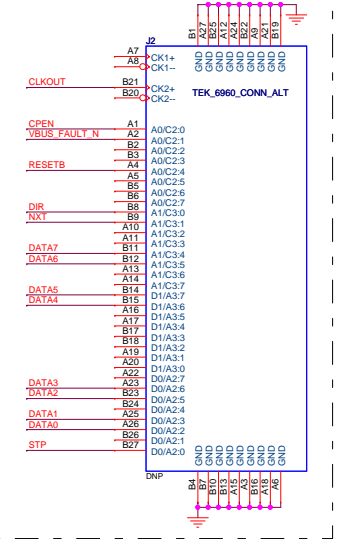
R12 = 78.7K	VDDIO = 1.8 V
R12 = 107K	VDDIO = 2.0 V
R12 = 178K	VDDIO = 2.5 V
R12 = 243K	VDDIO = 3.0 V
R12 = 287K	VDDIO = 3.3 V

## VBUS Switch



For host applications 150 uF to ground is required on VBUS to comply with the USB2.0 specification.

## ULPI Testpoints



R13	
Zero Ohm	Host / OTG
DNP	Peripheral

