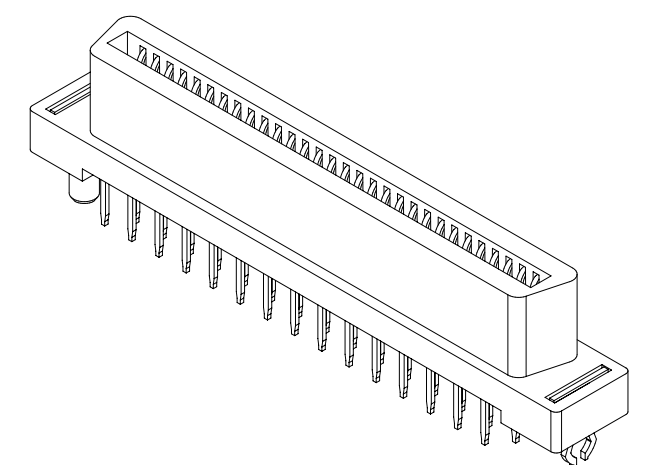
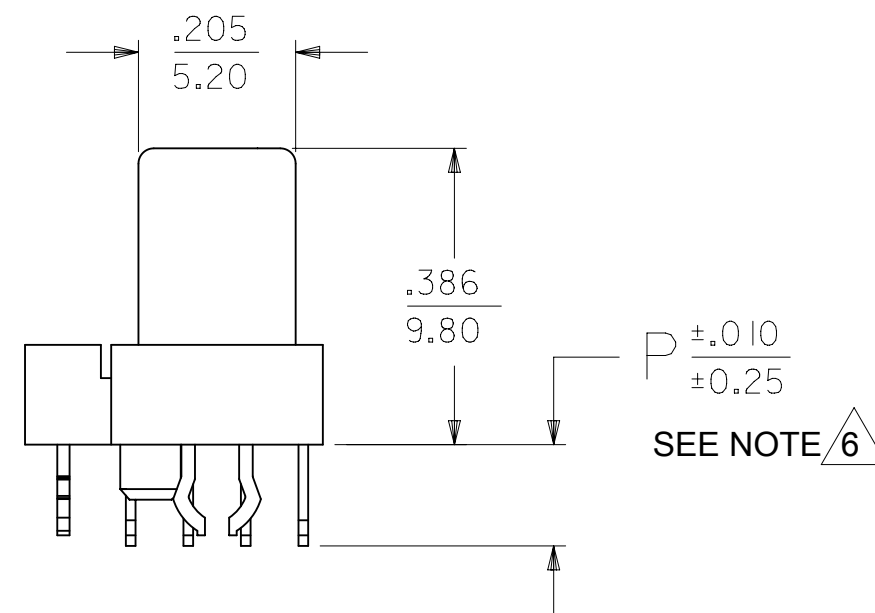
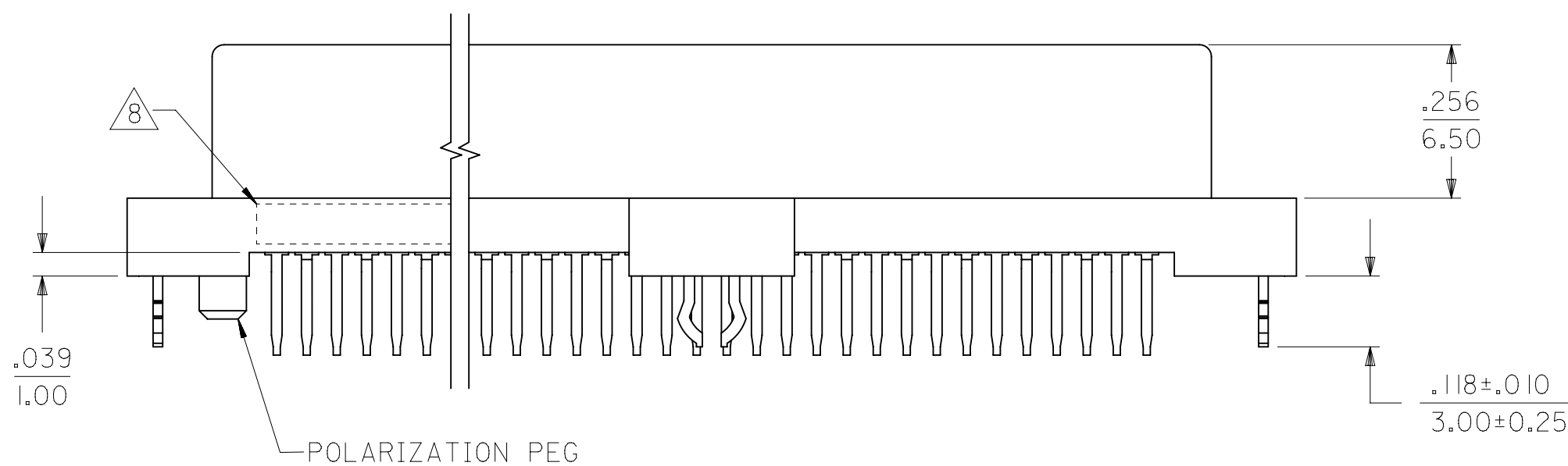
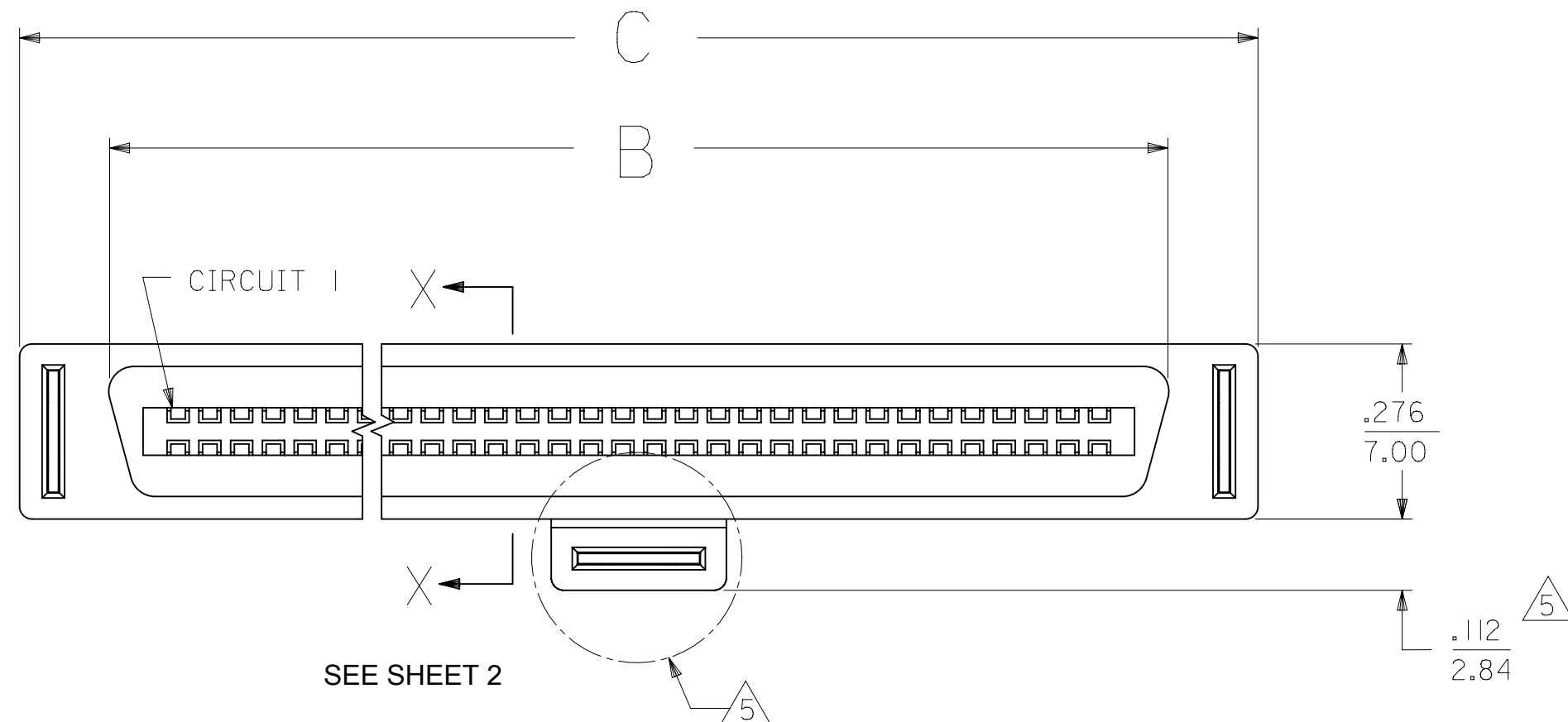


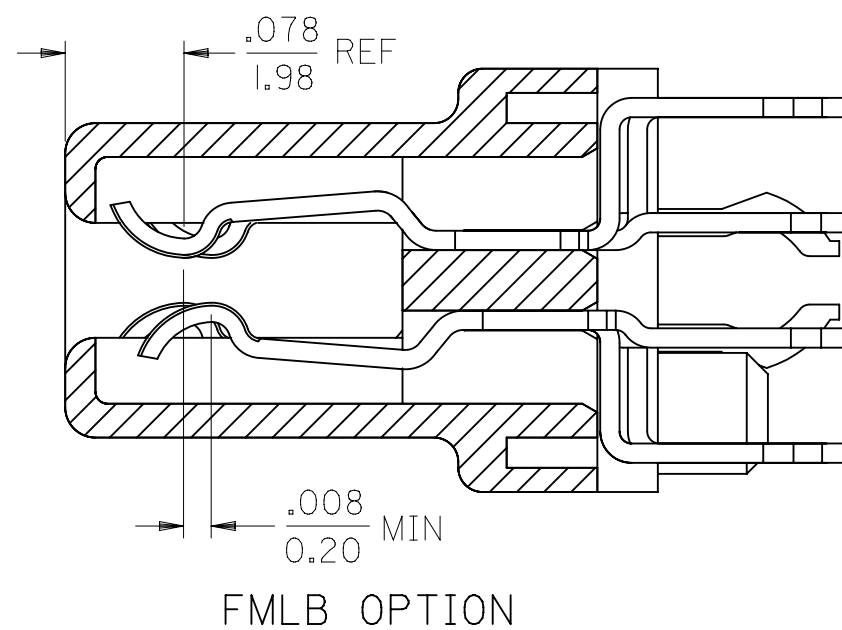
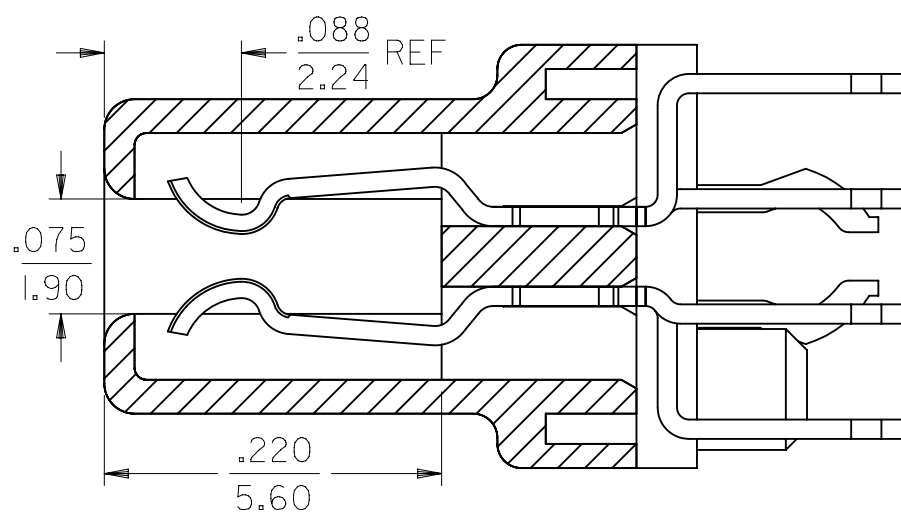
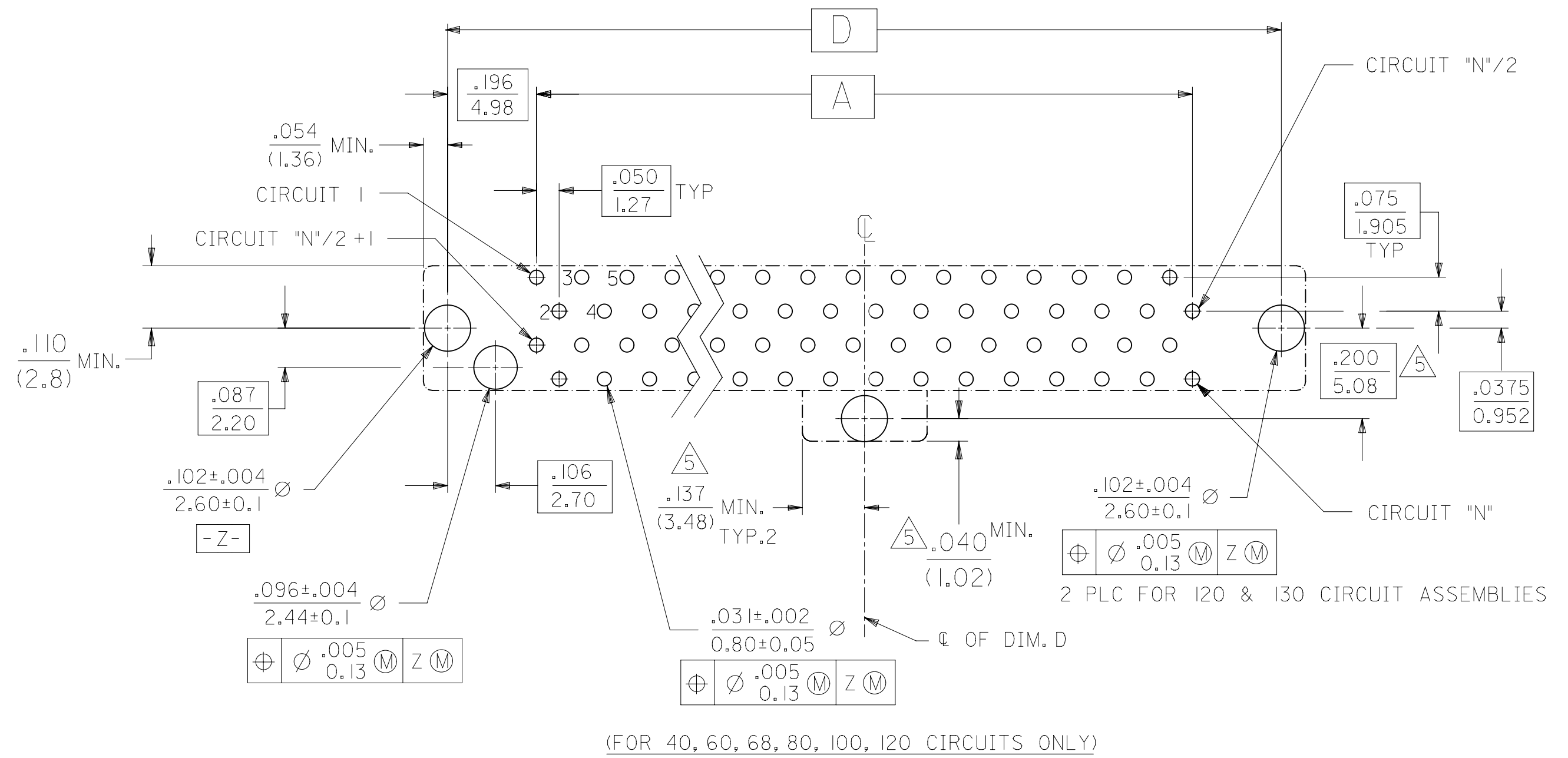
NOTES:

- 1) MATERIALS:  
HOUSING- LCP, GLASS FILLED, 94V-0, BLACK.  
TERMINALS- COPPER ALLOY  
METAL PEGS- COPPER ALLOY
- 2) FINISH:  
TERMINALS:  
.000030/(0.00076) MINIMUM GOLD IN CONTACT AREA OVER  
.000050/(0.00127) MINIMUM TIN IN TAIL AREA OVER  
.000075/(0.00191) MINIMUM NICKEL UNDERPLATE OVERALL.
- 3) ASSEMBLY MATES WITH MOLEX P/N SDA-71661-\*\*\*\*.
- 4) CONFORMS TO PRODUCT SPECIFICATION PS-71660.
- 5 CENTER PEG IS ONLY ON 120 AND 130 CIRCUIT ASSEMBLIES.
- 6 TAIL LENGTH ON FIRST MATE CONTACTS IS APPROXIMATELY .010 INCH/0.25 mm SHORTER THAN THE TAIL LENGTH SPECIFIED.
- 7 CONNECTOR WILL ACCEPT MATING TO A P.C. BOARD WITH A THICKNESS OF .062±.003.
- 8 FOUR DIGIT DATE CODE (WK YR), EXAMPLE => 26 96 LOCATED IN AREA INDICATED.
- 9 SEE CHART FOR PACKAGING INFORMATION.



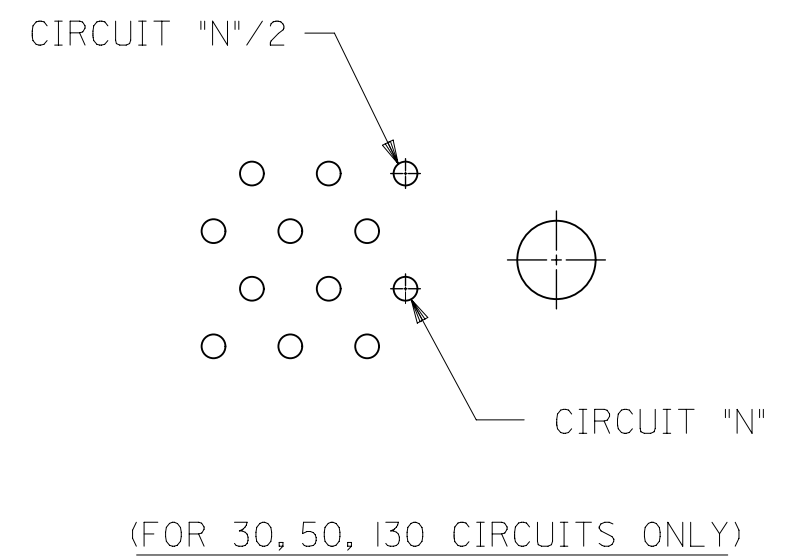
60 CIRCUIT ASSEMBLY SHOWN  
SCALE 2:1

THIS DRAWING CONTAINS INFORMATION THAT IS PROPRIETARY TO MOLEX ELECTRONIC TECHNOLOGIES, LLC AND SHOULD NOT BE USED WITHOUT WRITTEN PERMISSION									
DIMENSION UNITS <b>IN/mm</b>		SCALE <b>4:1</b>		CURRENT REV DESC: OBSOLETE PART NUMBERS				<b>molex</b>	
GENERAL TOLERANCES (UNLESS SPECIFIED)				EC NO: 644856					
		MM	INCH	DRWN: RPRABHUM		2020/06/19		SALES ASSEMBLY MOLEX EBBI 50D VERTICAL RECEPTACLE CONNECTOR	
4 PLACES ±				CHK'D: GGA		2020/10/07		PRODUCT CUSTOMER DRAWING	
3 PLACES ±			± 0.005	APPR: GGA		2020/10/07		DOCUMENT NUMBER	
2 PLACES ±		0.13	± 0.01	INITIAL REVISION:		1992/06/15		SDA-71660-1XXX	
1 PLACE ±		0.25	±	DRWN: RAN		1992/06/15		DOC TYPE	
0 PLACES ±			±	APPR: CAB		1992/06/15		PSD	
ANGULAR TOL ± 0.5°				THIRD ANGLE PROJECTION		DRAWING		DOC PART	
DRAFT WHERE APPLICABLE MUST REMAIN WITHIN DIMENSIONS				C-SIZE		SERIES		REVISION	
				71660		MATERIAL NUMBER		001	
				SEE TABLE		CUSTOMER		R	
				GENERAL MARKET		SHEET NUMBER		1 OF 3	




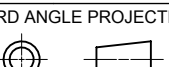
SECTION X-X  
SCALE - 8:1

RECOMMENDED PC BOARD LAYOUT  
COMPONENT SIDE



THIS DRAWING CONTAINS INFORMATION THAT IS PROPRIETARY TO MOLEX ELECTRONIC TECHNOLOGIES, LLC AND SHOULD NOT BE USED WITHOUT WRITTEN PERMISSION											
DIMENSION UNITS <b>IN/mm</b>		SCALE <b>4:1</b>		CURRENT REV DESC: OBSOLETE PART NUMBERS							
GENERAL TOLERANCES (UNLESS SPECIFIED)				EC NO: 644856							
		MM	INCH	DRWN: RPRABHUM 2020/06/19							
4 PLACES ±				CHK'D: GGA 2020/10/07		<b>SALES ASSEMBLY</b> <b>MOLEX EBBI 50D VERTICAL RECEPTACLE CONNECTOR</b>					
3 PLACES ±			± 0.005	APPR: GGA 2020/10/07							
2 PLACES ±		0.13	± 0.01	INITIAL REVISION:		<b>PRODUCT CUSTOMER DRAWING</b>					
1 PLACE ±		0.25	±	DRWN: RAN 1992/06/15							
0 PLACES ±			±	APPR: CAB 1992/06/15		DOCUMENT NUMBER		DOC TYPE	DOC PART	REVISION	
ANGULAR TOL ± 0.5°				DRAWING		SERIES		<b>SDA-71660-1XXX</b>			
DRAFT WHERE APPLICABLE MUST REMAIN WITHIN DIMENSIONS		THIRD ANGLE PROJECTION		C-SIZE		71660		MATERIAL NUMBER		CUSTOMER	SHEET NUMBER
								SEE TABLE		GENERAL MARKET	2 OF 3

ENGINEERING NUMBER	EDP NUMBER	PACKAGING SPEC	CKT ("N")	A	B	C	D	P	ADVANCED TERMINALS / CKTS SEE SECTION X-X "FMLB OPT"
SDA-71660-1050	015-92-1050	PK-71660	50	1.200 (30.48)	1.418 (36.02)	1.699 (43.15)	1.592 (40.45)	.134 (3.40)	↑ N/A ↓
SDA-71660-1120	015-92-1120	PK-71660	120	2.950 (74.93)	3.168 (80.47)	3.449 (87.60)	3.342 (84.90)		
SDA-71660-1130	015-92-1130	PK-71660	130	3.200 (81.28)	3.418 (86.82)	3.699 (93.95)	3.592 (91.25)		
SDA-71660-1330	015-92-1430	PK-71660	30	.700 (17.78)	.918 (23.32)	1.199 (30.45)	1.092 (27.75)	↑ .110 (2.79) ↓	↑ N/A ↓
SDA-71660-1340	015-92-1440	PK-71660	40	.950 (24.13)	1.168 (29.67)	1.449 (36.80)	1.342 (34.10)		
SDA-71660-1350	015-92-1450	PK-71660	50	1.200 (30.48)	1.418 (36.02)	1.699 (43.15)	1.592 (40.45)		
SDA-71660-1380	015-92-1480	PK-71660	80	1.950 (49.53)	2.168 (55.07)	2.449 (62.20)	2.342 (59.50)		
SDA-71660-1400	015-92-1500	PK-71660	100	2.450 (62.23)	2.668 (67.77)	2.949 (74.90)	2.842 (72.20)		

THIS DRAWING CONTAINS INFORMATION THAT IS PROPRIETARY TO MOLEX ELECTRONIC TECHNOLOGIES, LLC AND SHOULD NOT BE USED WITHOUT WRITTEN PERMISSION														
DIMENSION UNITS		SCALE		CURRENT REV DESC: OBSOLETE PART NUMBERS						 SALES ASSEMBLY MOLEX EBBI 50D VERTICAL RECEPTACLE CONNECTOR				
IN/mm		4:1												
GENERAL TOLERANCES (UNLESS SPECIFIED)				EC NO: 644856 DRWN: RPRABHUM 2020/06/19 CHK'D: GGA 2020/10/07 APPR: GGA 2020/10/07 INITIAL REVISION: DRWN: RAN 1992/06/15 APPR: CAB 1992/06/15						DOCUMENT NUMBER		DOC TYPE	DOC PART	REVISION
	MM	INCH								SDA-71660-1XXX		PSD	001	R
4 PLACES	±	±								SEE TABLE		GENERAL MARKET		SHEET NUMBER
3 PLACES	±	± 0.005												3 OF 3
2 PLACES	± 0.13	± 0.01												
1 PLACE	± 0.25	±												
0 PLACES	±	±												
ANGULAR TOL ± 0.5 °				THIRD ANGLE PROJECTION		DRAWING	SERIES							
DRAFT WHERE APPLICABLE MUST REMAIN WITHIN DIMENSIONS						C-SIZE	71660							