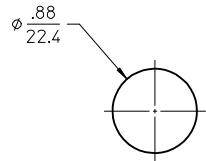
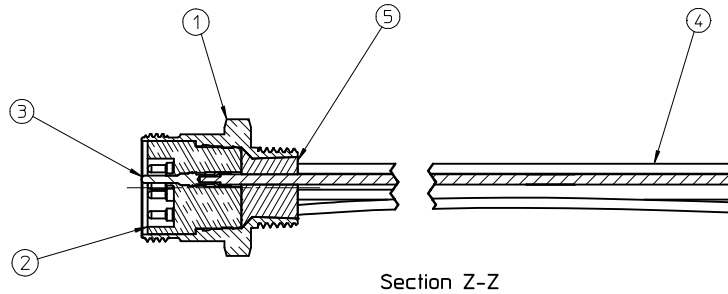
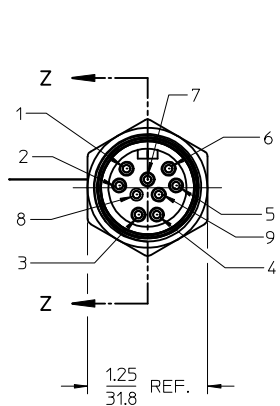
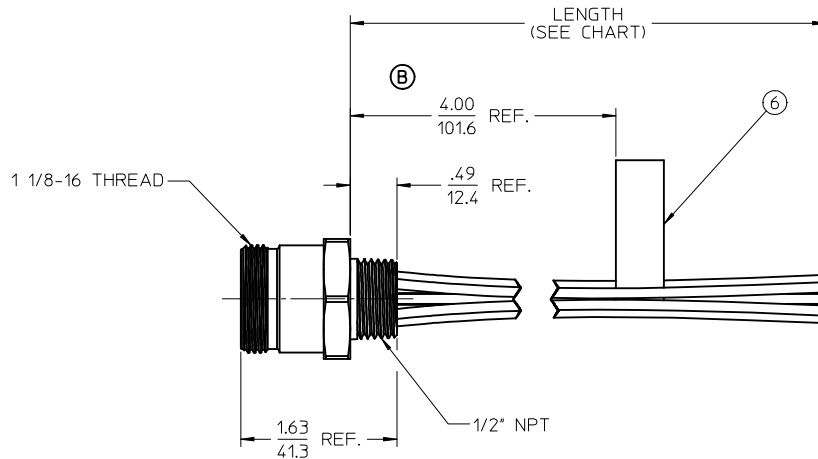


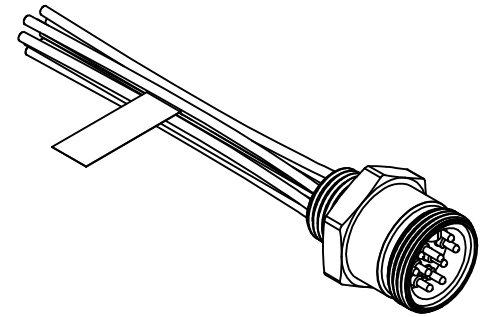
| MATERIAL NO. | ENGINEERING NO. | LENGTH                       |
|--------------|-----------------|------------------------------|
| 1300150137   | 3R9006A20A120   | 12' +.75-0 [305mm +19.0-0]   |
| 1300150140   | 3R9006A20F030   | 3'0" +1.75-0 [ .9M +44.5-0]  |
| 1300150143   | 3R9006A20F060   | 6'0" +2.19-0 [ 1.8M +55.6-0] |



REF. KNOCK-OUT HOLE



Section Z-Z



NOTES:

1. MATERIAL: SEE TABLE
2. FINISHES: SEE TABLE
3. MATES WITH: NONE
4. ELECTRICAL SPECIFICATIONS:  
VOLTAGE RATING: 600V AC/DC  
CURRENT RATING: 7 AMPS
5. RoHS COMPLIANT

|   |              |
|---|--------------|
| 1 | ORANGE       |
| 2 | BLUE         |
| 3 | RED-BLACK    |
| 4 | GREEN-BLACK  |
| 5 | WHITE        |
| 6 | RED          |
| 7 | GREEN-YELLOW |
| 8 | WHITE-BLACK  |
| 9 | BLACK        |

WIRING DIAGRAM

| ITEM | QTY. | DESCRIPTION            | MATERIAL      | FINISH           |
|------|------|------------------------|---------------|------------------|
| 6    | 1    | LABEL                  | PLASTIC FILM  | BLACK/YELLOW     |
| 5    | 1    | POTTING                | EPOXY         |                  |
| 4    | 9    | WIRE, 16 AWG (UL 1015) | PVC INSULATED | SEE WIRE DIAGRAM |
| 3    | 9    | CONTACT PIN            | BRASS         | GOLD PLATED      |
| 2    | 1    | INSERT                 | PVC           | YELLOW           |
| 1    | 1    | RECEPCTACLE SHELL      | ZINC ALLOY    | E-COAT, BLACK    |

**DIM WAS 8.00**  
EC NO: MNA2010-0101  
DRAWN BY: DRWINRSTONE 2009/08/17  
CHKD BY: WOODMAN  
APPR: J. MURPHY 2009/08/21

QUALITY SYMBOLS  
▽=0  
▽=0

GENERAL TOLERANCES (UNLESS SPECIFIED)

|          | mm      | INCH    |
|----------|---------|---------|
| 4 PLACES | ± .005  | ± .0005 |
| 3 PLACES | ± .003  | ± .0003 |
| 2 PLACES | ± .002  | ± .0002 |
| 1 PLACE  | ± 0.015 | ± .0005 |

ANGULAR ±1/2°

DRAFT WHERE APPLICABLE  
MUST REMAIN  
WITHIN DIMENSIONS

DIMENSION STYLE  
**IN/MM**

DRAWN BY: R. STONE DATE: 2009/03/26  
CHECKED BY: B. WOODMAN DATE: 2009/03/27  
APPROVED BY: J. MURPHY DATE: 2009/03/31

MATERIAL NO. **SEE CHART**

SCALE: 1:1  
DESIGN UNITS: INCH  
THIRD ANGLE PROJECTION

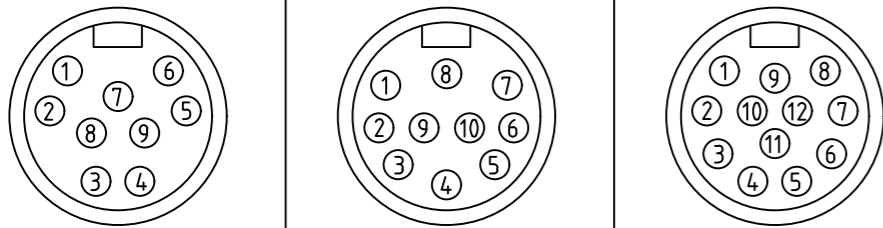
TITLE: **MC RECEPTACLE, MALE  
9 POLE, 1/2" NPT**

**MOLEX INCORPORATED**

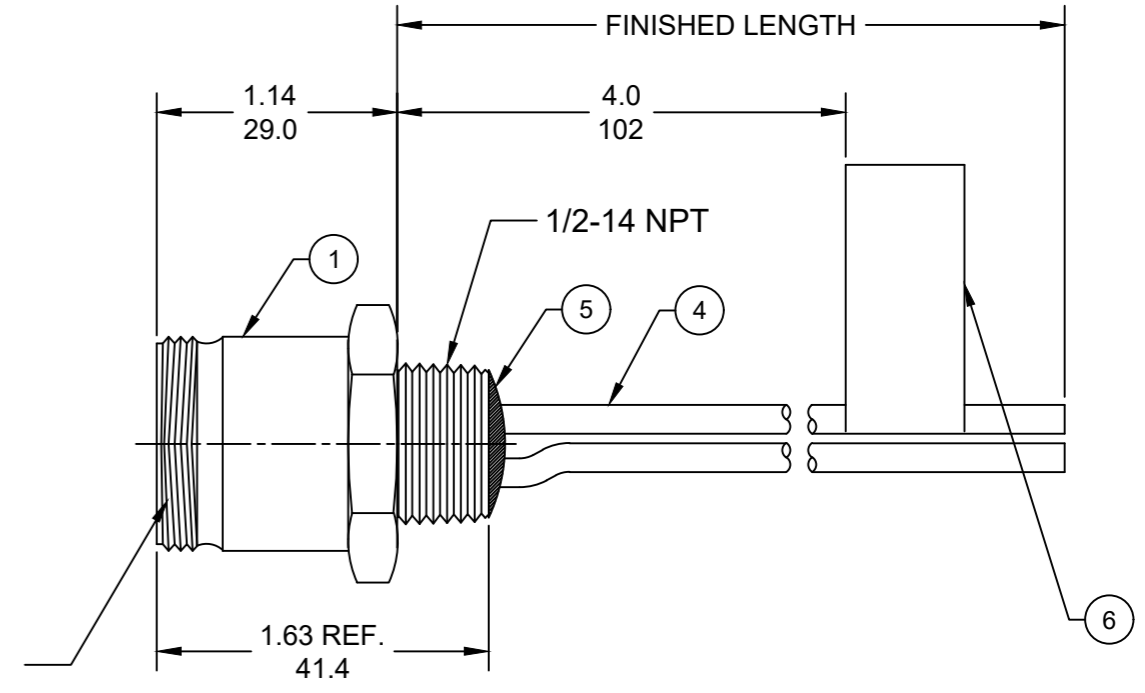
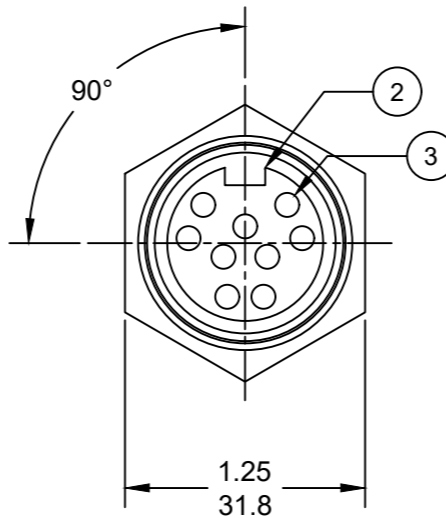
DOCUMENT NO. **SD-130015-003** SHEET NO. **1 OF 1**

THIS DRAWING CONTAINS INFORMATION THAT IS PROPRIETARY TO MOLEX INCORPORATED AND SHOULD NOT BE USED WITHOUT WRITTEN PERMISSION

FACE VIEW-MALE INSERT

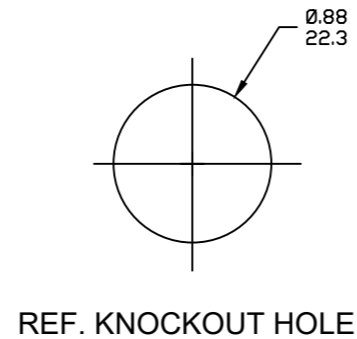


|  |   |  |
|--|---|--|
| 1 ORANGE<br>2 BLUE<br>3 RED/BLACK<br>4 GREEN/BLACK<br>5 WHITE<br>6 RED<br>7 GREEN/YELLOW<br>8 WHITE/BLACK<br>9 BLACK | 1 ORANGE<br>2 BLUE<br>3 WHITE/BLACK<br>4 RED/BLACK<br>5 GREEN/BLACK<br>6 ORANGE/BLACK<br>7 RED<br>8 GREEN/YELLOW<br>9 BLACK<br>10 WHITE | 1 ORANGE<br>2 BLUE<br>3 WHITE/BLACK<br>4 RED/BLACK<br>5 GREEN/BLACK<br>6 ORANGE/BLACK<br>7 BLUE/BLACK<br>8 BLACK/WHITE<br>9 GREEN/YELLOW<br>10 RED<br>11 WHITE<br>12 BLACK |
|--|---|--|



| PART NO    | ENGINEERING NO. | FINISHED LENGTH   |
|------------|-----------------|-------------------|
| 1300150137 | 3R9006A20A120   | 12 IN [0.3M]      |
| 1300150051 | 3R1006A20F120   | 12 FT [3.6M]      |
| 1300150091 | 3R2006A20M050   | 5.0M [16 FT 5 IN] |

- NOTES:
- MATERIAL: AS NOTED
  - FINISH: AS NOTED
  - ELECTRICAL:  
VOLTAGE: 320V PER IEC60664  
600V PER UL2238  
CURRENT: 9 POLE: 7A  
10 POLE: 7A  
12 POLE: 5A
  - TEMP RATING: -20°TO +105°C
  - PROTECTION: IP67 (WHEN MATED)
  - UL RECOGNIZED, FILE: E152210  
CSA CERTIFIED, FILE: LR6837
  - ALL DIMENSIONS ARE FOR REFERENCE UNLESS TOLERANCED OR NOTED OTHERWISE



PART NO. MATRIX  
3R1006A20F010

LENGTH:  
A120= 12 INCHES  
F001= .1 FT  
F020= 2 FT  
F200= 20 FT

M005= 0.5 METER  
M010= 1 METER  
M100= 10 METER

CABLE LENGTH TOLERANCES

|                          |                         |
|--------------------------|-------------------------|
| >.3M [1FT]:              | +19mm-0 [+ .75in-0]     |
| .3 - .9M [1 - 3FT]:      | +44.5mm-0 [+1.75in-0]   |
| .9 - 1.8M [3 - 6FT]:     | +55.6mm-0 [+2.19in-0]   |
| 1.8 - 3.7M [6 - 12FT]:   | +88.9mm-0 [+3.50in-0]   |
| 3.7 - 7.3M [12 - 24FT]:  | +165.1mm-0 [+6.50in-0]  |
| 7.3-14.6M [24 - 48FT]:   | +317.5mm-0 [+12.50in-0] |
| 14.6 - 30.5M [48-100FT]: | +622.3mm-0 [+24.50in-0] |
| OVER 30M [100FT]         | +2% OF FINISHED LENGTH  |

| ITEM | DESCRIPTION            | MATERIAL       | FINISH       |
|------|------------------------|----------------|--------------|
| 6    | FLAG LABEL             | VINYL          | BLACK/YELLOW |
| 5    | POTTING MATERIAL       | EPOXY          |              |
| 4    | WIRE, 16 AWG UL (1015) | PVC INSULATION | SEE CHART    |
| 3    | CONTACT PIN            | COPPER ALLOY   | GOLD PLATED  |
| 2    | MALE INSERT (C-SIZE)   | TPE            | YELLOW       |
| 1    | RECEPTACLE SHELL       | ZINC DIE-CAST  | BLACK        |

|  |   |                        |                          |                            |   |
|--|---|------------------------|--------------------------|----------------------------|---|
| FUNCTIONAL SYMBOLS<br>F=0<br>E=0<br>P=0              | THIS DRAWING CONTAINS INFORMATION THAT IS PROPRIETARY TO MOLEX ELECTRONIC TECHNOLOGIES, LLC AND SHOULD NOT BE USED WITHOUT WRITTEN PERMISSION |                        |                          |                            |   |
|  | DIMENSION UNITS   | SCALE                  |                          |                            | MINI-CHANGE RECEPTACLE, C-SIZE, 9, 10 & 12 POLE, MALE, STRAIGHT, SINGLE KEY, 16 AWG |
|  | INCH/MM   | NTS                    | PRODUCT CUSTOMER DRAWING |                            |   |
|  | GENERAL TOLERANCES (UNLESS SPECIFIED)   |                        | DOCUMENT NUMBER          |                            |   |
| 4 PLACES   | ±----   | ±----                  | SD-130015-027            | DOC TYPE/DOC PART/REVISION |   |
| 3 PLACES   | ±----   | ±----                  | PSD                      | 001 B                      |   |
| 2 PLACES   | ±----   | ±----                  | SHEET NUMBER             |                            |   |
| 1 PLACE  | ±----   | ±----                  | 1 OF 1                   |                            |   |
| 0 PLACES   | ±----   | ±----                  |                          |                            |   |
| ANGULAR TOL ± ---- °                                 |   | THIRD ANGLE PROJECTION |                          | DRAWING SERIES             |   |
| DRAFT WHERE APPLICABLE MUST REMAIN WITHIN DIMENSIONS |   | B-SIZE                 |                          | 130015                     |   |