



ELECTRONICS, INC.  
 44 FARRAND STREET  
 BLOOMFIELD, NJ 07003  
 (973) 748-5089  
<http://www.nteinc.com>

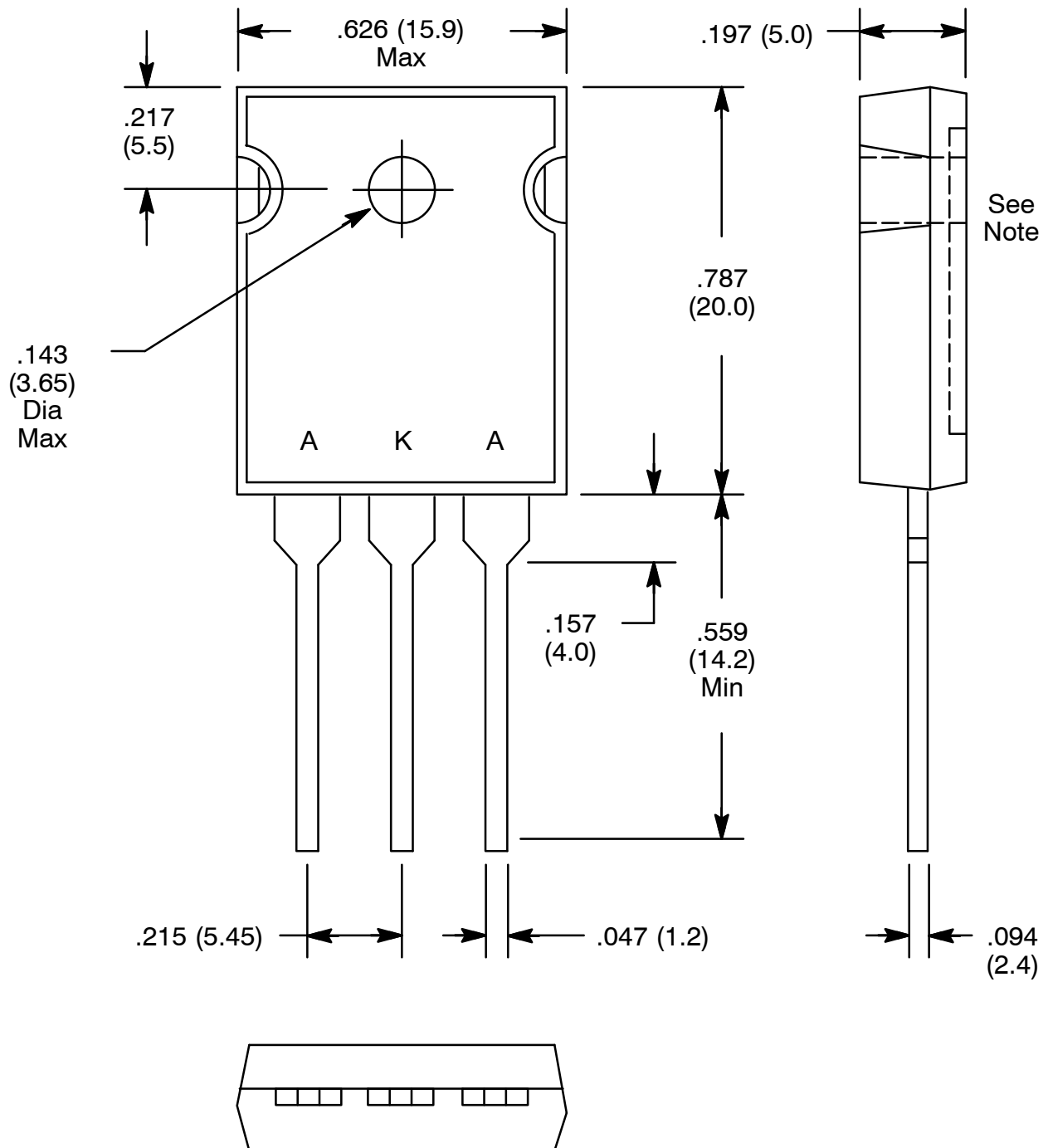
## NTE6091 Silicon Schottky Barrier Rectifier 45V, 40 Amp, TO247

**Features:**

- Guarding for Stress Protection
- Low Forward Voltage
- +125°C Operating Junction Temperature

**Maximum and Electrical Ratings:**

Maximum Peak Repetitive Reverse Voltage, $V_{RRM}$ .....	45V
Maximum Working Peak Reverse Voltage, $V_{RWM}$ .....	45V
Maximum DC Blocking Voltage, $V_R$ .....	45V
Maximum RMS Reverse Voltage, $V_{R(RMS)}$ .....	31V
Maximum Average Rectified Forward Current ( $V_R = 45V$ , $T_C = +125^\circ C$ ), $I_{F(AV)}$	
Per Leg .....	20A
Total Device .....	40A
Peak Repetitive Forward Current ( $V_R = 45V$ , Square Wave, 20kHz, $T_C = +125^\circ C$ Max), $I_{FRM}$ .	40A
Non-Repetitive Peak Surge Current, $I_{FSM}$	
(Surge Applied at Rated Load Conditions, Halfwave, Single Phase, 60Hz) .....	300A
Operating Junction Temperature Range, $T_J$ .....	-65° to +250°C
Storage Temperature Range, $T_{stg}$ .....	-65° to +250°C
Maximum Instantaneous Forward Voltage ( $I_F = 20A$ ), $V_F$	
$T_C = +125^\circ C$ .....	0.50V
$T_C = +25^\circ C$ .....	0.55V
Maximum Instantaneous Reverse Current (rated DC voltage), $I_R$	
$T_C = +125^\circ C$ .....	10mA
$T_C = +25^\circ C$ .....	100mA



**Note:** Pin2 connected to metal part of mounting surface.