

Feed-through terminal, Screw connection, Mounting type: Mounting rail TS 35/7.5, Rated cross-section: 35 mm², Width: 16 mm, Colour: Grey

RAL: 7032

Business data

Packaging unit	20
Quantity unit	PC
Weight per piece (not including packaging)	59.8 g
Weight per piece (including packaging)	62.9 g
Unit of weight	G
Customs number	85369010
Country of origin	DE
Prio-Article	17371.2
Product description	Feed-through terminal

17371.6

RK 35/35 N/IS GR

Technical data

Dimensions

Length	58 mm
Width	16 mm
Height TS 35/7.5	52 mm

Ratings

Rated voltage	800 V
Rated current	125 A
Rated cross-section	35 mm ²
Rated impulse voltage	8 kV
Overvoltage category	III
Contamination degree	3
Maximum power dissipation for nominal condition	4 W

Technical data

Connection data

Connection principle	Screw connection
Connection position	Lateral
Connections	2
Number of terminals per level	2
Number of levels	1
Wire cross-section single-core (rigid) / stranded, min.	2.5 mm ²
Wire cross-section single core (rigid)/stranded, max.	50 mm ²
Wire cross-section stranded, min.	2.5 mm ²
Wire cross-section stranded, max.	35 mm ²
Wire cross-section stranded with wire-end ferrules, min.	2.5 mm ²
Wire cross-section stranded with wire-end ferrules, max.	35 mm ²
Wire cross-section AWG, min.	12
Wire cross-section AWG, max.	2
Stripping length	20 mm
Screw head	Inner hex (Allen)
Screw threading	M 6
Tightening torque, min.	2.5 Nm
Tightening torque, max.	5 Nm

Materials

Insulation housing	Polyamide 6.6
Flammability class UL 94	V-2
Working temperature, min.	-40 °C
Working temperature, max.	105 °C

Further technical data

Mounting type	Mounting rail TS 35/7,5
Gauge plug acc. to EN 60 947-1	B9
Number of cross-connection channels	1

Print

Colour	Grey
--------	------

Data sheet

17371.6

RK 35/35 N/IS GR



Technical data

Environmental Product Compliance

REACH Conform	yes
REACH Reference date	2021-07-08
REACH Candidate Substance Note	No
RoHS Conform	yes

17371.6

RK 35/35 N/IS GR

Approvals

CSA approval

CSA File Number	042110_0_000
CSA approval	C22.2 No 158
CSA approval granted	yes
CSA Usegroup C: rated voltage	600 V
CSA Usegroup C: rated current	115 A
CSA wire cross-section AWG, min.	12
CSA wire cross-section AWG, max.	2
CSA stripping length	20 mm

CSAus approval

CSAus File Number	042110_0_000
CSAus approval	UL 1059
CSAus approval granted	yes
CSAus Usegroup C: rated voltage	600 V
CSAus Usegroup C: rated current	115 A
CSAus wire cross-section AWG, min.	12
CSAus wire cross-section AWG, max.	2
CSAus stripping length	20 mm

Approvals

UL Recognized

UL File Number	E95701
UL approval	UL 1059
UL Usegroup C: rated voltage	600 V
UL Usegroup C: rated current	115 A
UL wire cross-section single-core (rigid) AWG, min.	12
UL wire cross-section single-core (rigid) AWG, max.	2
UL wire cross-section stranded AWG, min.	12
UL wire cross-section stranded AWG, max.	2
UL torque	40 Lb In
UL wire material	Cu
UL factory wiring	yes
UL field wiring	yes
UL Recognized	yes

cUL Recognized

cUL File Number	E95701
cUL approval	C22.2 No 158
cUL Usegroup C: rated voltage	600 V
cUL Usegroup C: rated current	115 A
cUL wire cross-section single-core (rigid) AWG, min.	12
cUL wire cross-section single-core (rigid) AWG, max.	2
cUL wire cross-section stranded AWG, min.	12
cUL wire cross-section stranded AWG, max.	2
cUL torque	40 Nm
cUL wire material	Cu
cUL Recognized	yes

Standards and regulations

EAC approval	TR ZU 004/2011
EAC approval granted	yes

17371.6

RK 35/35 N/IS GR

Approvals

German Lloyd approval

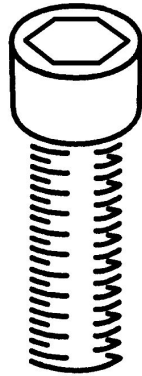
GL approval	IEC 60947-7-1:2002
GL approval granted	yes
GL rated voltage	800 V
GL rated current	125 A
GL rated cross-section	35 mm ²
GL environmental category	C

KEMA KEUR approval

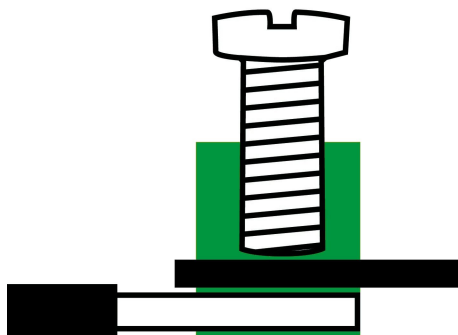
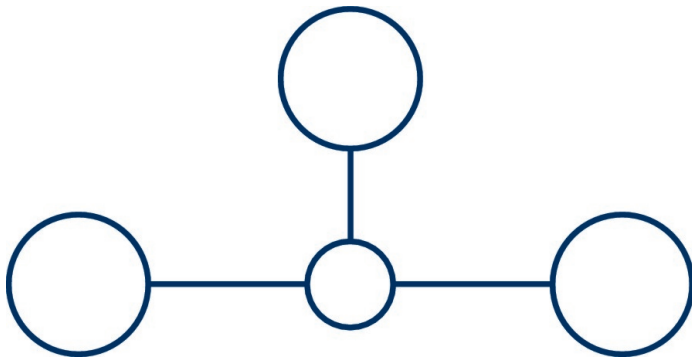
KEMA KEUR approval	EN 60947-7-1:2009
KEMA KEUR approval granted	yes
KEMA rated voltage	1000 V
KEMA rated current	125 A
KEMA rated impulse voltage	8 kV
KEMA wire cross-section single core (rigid), min.	2.5 mm ²
KEMA wire cross-section single-core (rigid), max.	50 mm ²
KEMA wire cross-section stranded, min.	2.5 mm ²
KEMA wire cross-section stranded, max.	35 mm ²

Media

M6



EAC





17371.6

RK 35/35 N/IS GR

Accessories

Cover



Cover, Length: 37.3 mm, Width: 16 mm,
Colour: Yellow

General order data

Product number:	Article name	GTIN (EAN)	Packaging unit
2956.0	AD 1/16/N/B YE	4044211056841	500 ST



Cover, Length: 37.3 mm, Width: 16 mm,
Colour: White

General order data

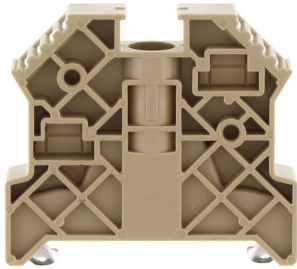
Product number:	Article name	GTIN (EAN)	Packaging unit
2968.0	AD 1/16/N WH	4044211056971	500 ST

17371.6

RK 35/35 N/IS GR

Accessories

End stop



End stop, Mounting type: Mounting rail TS
35/7.5, Width: 9.5 mm, Colour: Beige

General order data

Product number:	Article name	GTIN (EAN)	Packaging unit
2828.0	ES 35/K/ST BG	4044211055547	500 ST

17371.6

RK 35/35 N/IS GR

Accessories

Cross-connector



Cross-connector, No. of poles: 3, Mounting type: Can be screwed on, Width: 41 mm, Rated cross-section: 35 mm², Colour: natural

General order data

Product number:	Article name	GTIN (EAN)	Packaging unit
17287.0	Q 3	4044211180331	500 ST



Cross-connector, No. of poles: 10, Mounting type: Can be screwed on, Width: 153 mm, Rated cross-section: 35 mm², Colour: natural

General order data

Product number:	Article name	GTIN (EAN)	Packaging unit
17289.0	Q 10	4044211180355	500 ST



Cross-connector, No. of poles: 2, Mounting type: Can be screwed on, Width: 25 mm, Rated cross-section: 35 mm², Colour: natural

General order data

Product number:	Article name	GTIN (EAN)	Packaging unit
17253.0	Q 2	4044211186531	500 ST

17371.6

RK 35/35 N/IS GR

Accessories

Cross-connector

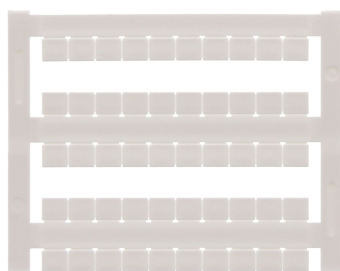


Cross-connector, No. of poles: 4, Mounting type: Can be screwed on, Width: 57 mm, Rated cross-section: 35 mm², Colour: natural

General order data

Product number:	Article name	GTIN (EAN)	Packaging unit
17288.0	Q 4	4044211180348	500 ST

Quick marking



Terminal marker / Pocket Maxicard, Length: 5 mm, Width: 6 mm, Colour: White

General order data

Product number:	Article name	GTIN (EAN)	Packaging unit
4702.7	PMC SB 6/50 WH	4044211089986	500 ST