

**MICRO SWITCH**

FREEDPORT ILLINOIS, U.S.A.  
A DIVISION OF HONEYWELL

FED. REG. CODE 91928

**SWITCH ENCLOSED**

CATALOG LISTING  
**2 ML7-E1**

REPLACES

RELEASE NO. PR-9943

DRAWING NUMBER

**M**

ISSUE  
**2**  
**10**

CHECK

REVISIONS

A WAS ETS

PR-2943

G J W

19 MAR 81

B 0058367

JAS

11 NOV 85

C 055051C

T A D

6 JAN 86

D C063739

T SK

17 JAN 88

E 0074287

G J W

15 APR 93

C E B

C E B

CHECK

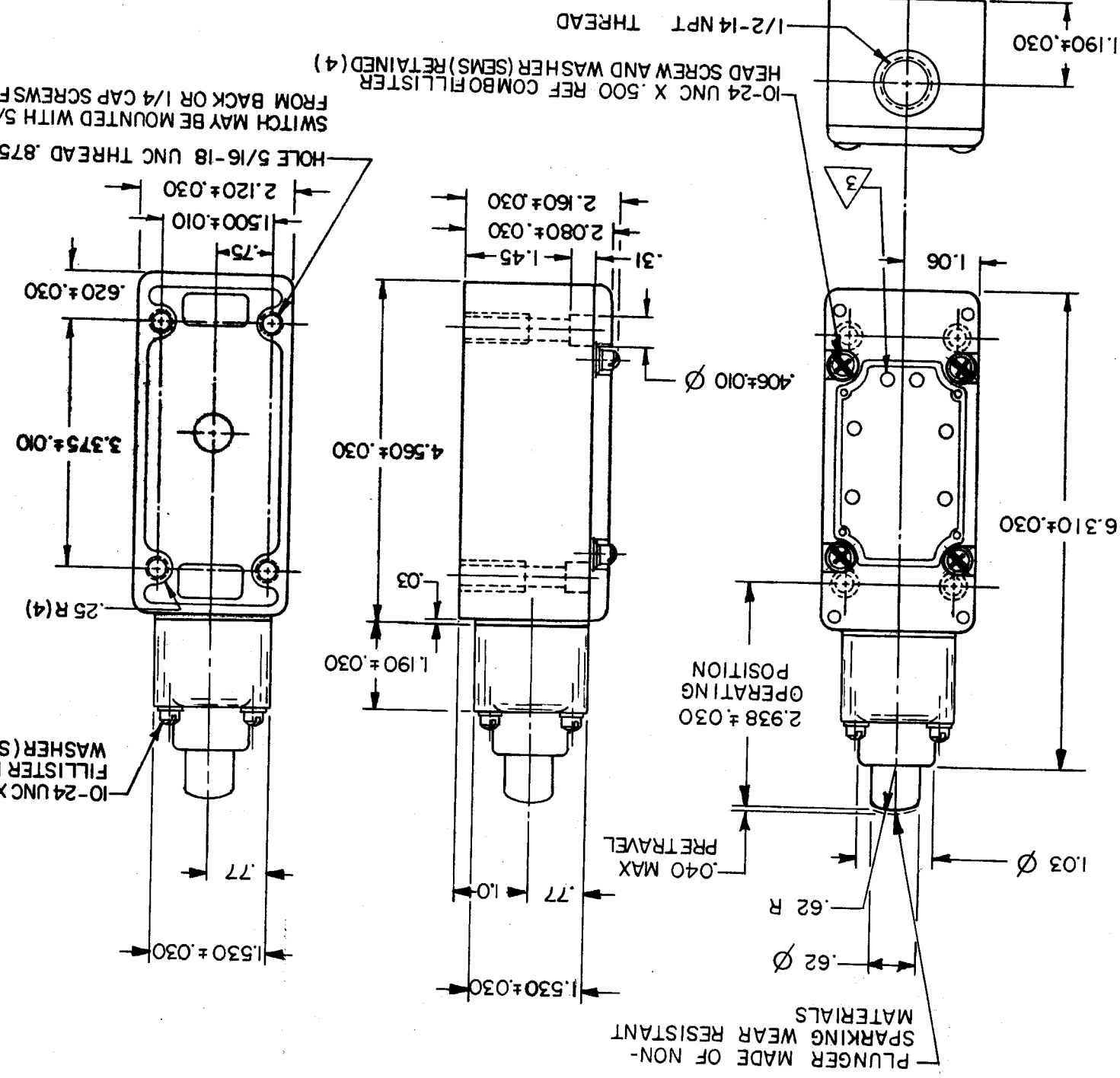
19 MAR 81

FO-82851-B  
DRAWN

G J W

19 MAR 81

CHARACTERISTICS (TENTATIVE)	OPERATING FORCE ---6 LB APPROX
RELEASE FORCE ---4 LB APPROX	DIFFERENTIAL TRAVEL---.020 MAX
OVERTRAVEL---.485 MIN	SWITCH-BASIC REPLACEMENT-DT-2R711-A7
10A-125 OR 250 VAC 0.3A 125 VDC; 0.15A 250 VDC	
D. P. D. T.	
CONTACT ARRANGEMENT	
ELECTRICAL DATA	
THIS DRAWING COVERS A PROPRIETARY ITEM AND IS THE PROPERTY OF MICRO SWITCH, A DIVISION OF HONEYWELL. THIS DRAWING IS NOT TO BE COPIED OR USED WITHOUT THE APPROVAL OF MICRO SWITCH.	
SCALE 1/2 TO 1	
DO NOT SCALE PRINT	
TOLERANCES	
APPLY TO DESIGN UNITS. CONVERSIONS ARE ONLY FOR REFERENCE. UNLESS NOTED, TOLERANCES ARE:	
NO PLACES	DIM. .001
TWO PLACES	DIM. .002
THREE PLACES	DIM. .005
ANGLES	ANGLE .001
DESIGN UNITS	SI METRIC
US CUSTOMARY	US CUSTOMARY
THIRD ANGLE PROJECTION	
WEIGHT	



NOTES

- 1 IT IS ESSENTIAL THAT THE CONDUIT OPENING BE PROPERLY SEATED IN ORDER TO MAINTAIN THE EXPLOSION PROOF PROPERTIES
- 2 FOR USE IN CLASS I GROUPS C AND D, CLASS II GROUPS E, F AND G HAZARDOUS LOCATIONS
- 3 CAUTION: IN ORDER TO MAINTAIN THE EXPLOSION PROOF PROPERTIES OF THIS UNIT, DO NOT OBSTRUCT THE HOLES IN THE COVER PLATE

**M**