

ONE TOOL TO MEET ALL NEEDS

GOES WHEREVER THE JOB TAKES YOU

Featuring a temperature range from $-20\text{ }^{\circ}\text{C}$ to $550\text{ }^{\circ}\text{C}$ ($-4\text{ }^{\circ}\text{F}$ to $1022\text{ }^{\circ}\text{F}$), the T-Cam 300 is perfect for electrical, building, and mechanical applications. View an entire electrical cabinet at 1 m by taking advantage of the 56° FOV while still being able to perform inspections of narrow spaces. Enable the center/highest/lowest temperature point and alarming features to assist in detecting critical failures. Meets all radiometric and analysis needs.

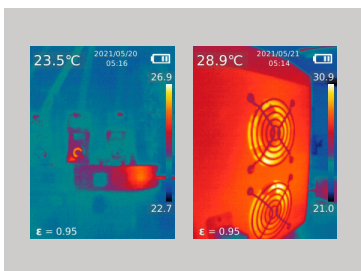


T-Cam 300 P-Series



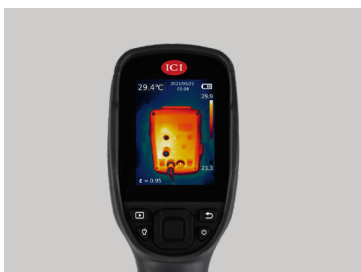
COMPACT AND RUGGED

11 hours of battery life ensures the T-Cam 300 meets time requirements of inspections. Recharge lightning fast with the Type-C interface and provided cable. Rated IP54 to protect against dirt, dust, and other non-corrosive materials. 2 m (6.56') drop-rating to meet the rigors of inspections.



CRISP THERMAL IMAGES

Provides 256 x 192 quality resolution thermal captures at short and medium distances. Take advantage of ICI Dual Vision to overlay visible and thermal images. Features 4 image modes: picture-in-picture, visible, infrared and ICI Dual Vision for situational awareness and target location. 7 color palettes to enhance viewing and easily find hot spots. Save images to the provided 16 GB Micro-SD card.



EASY TO USE

Quick start instruction guide provided. No additional training required. One-handed, 5-button easy operation for fast inspections. Use handheld or on a tripod. Utilize the Type-C connector for fast charging. Features a built-in LED flashlight for dimly lit areas.



The T-Cam 300 handheld thermal camera provides high quality 256 x 192 thermal images in rich details at short and medium distances to meet professional work requirements easily. Provides a wide temperature range measuring from -20 °C to 550 °C (-4 °F to 1022 °F) and an accuracy of $\pm 2^{\circ}\text{C}$ ($\pm 3.6^{\circ}\text{F}$) or $\pm 2\%$. 11 hours of battery life ensures the T-Cam 300 meets time requirements of inspections. Increased battery life through power management settings to shutdown the device when not in use. Take advantage of ICI Dual Vision to overlay visible and thermal images with color palettes to enhance viewing.

Features

- Central spot, hot spot, cold spot
- ICI Dual Vision - IR and visible
- Single-handed operation
- Simple 5-button design
- Automatic alarming
- 11 hour battery life
- 2 m (6.56') drop protection
- Power management
- High-temperature measuring
- Built-in LED Flashlight
- Small size
- Light weight

Applications

- Electrical poles
- Electrical inspections
- Process control
- Plant/General maintenance
- Industrial vision systems
- Transportation/Automotive
- HVAC/AC
- Home/building Inspections

Accessories

- USB Cable
- 16 GB Micro-SD card

Specifications

- **Pixel Resolution:** 256 x 192
- **Accuracy:** $\pm 2^{\circ}\text{C}$ ($\pm 3.6^{\circ}\text{F}$) or $\pm 2\%$
- **Temperature Range:** -20 °C to 550 °C (-4 °F to 1022 °F)
- **Operation Range:** -10 °C to 50 °C (14 °F to 122 °F)
- **Storage Range:** -20 °C to 60 °C (-4 °F to 140 °F)
- **Pixel Pitch:** 12 μm
- **FOV:** 56° x 42°
- **IFOV:** 3.8 mrad
- **Focal Length:** 3.2 mm
- **Focus:** fixed
- **Measurement Distance:** setting dependent
- **Thermal Sensitivity (NETD):**
< (50 mK) 0.05 °C at 30 °C (86°F)
- **Frame Rate:** 25 Hz
- **Humidity:** 10% to 95% non-condensing
- **Pixel Operability:** > 99 %
- **Drop Rating:** 2 m (6.56')
- **Dimensions (without lens):**
237 mm x 75 mm x 92 mm (L x W x H ± 0.5 mm)
(9.33" x 2.95" x 3.62" (L x W x H ± 0.02 "))
- **Power:** 5 V DC 2 A
- **Battery:** Li-ion, built-in rechargeable
- **Operation Time:** 11 hours
- **Charging Time:** 4 hours
- **Power Management:** adjustable (automatic shutdown, 5 minutes, 10 minutes, 20 minutes)
- **Weight (without lens):** 520 g (1.15 lbs)
- **Interface:** USB Type-C, MicroSD
- **Image Format:** JPG (with data)
- **Image Polarity:** white hot, black hot, iron, lava, rainbow, high-contrast rainbow, black red
- **Image Modes:** IR, fusion (ICI Dual Vision), visible picture-in-picture
- **Memory:** MicroSD card (up to 64 GB)
- **Screen:** 2.8" color LCD, 240 x 320
- **Emissivity Correction:** 0.01 to 1.0
- **Measurement Units:** °C, °F, °K
- **IP Rating:** IP 54
- **Light:** LED
- Automatic alarm
- Internal non-uniformity correction (NUC)
- 1/4"-20 tripod support