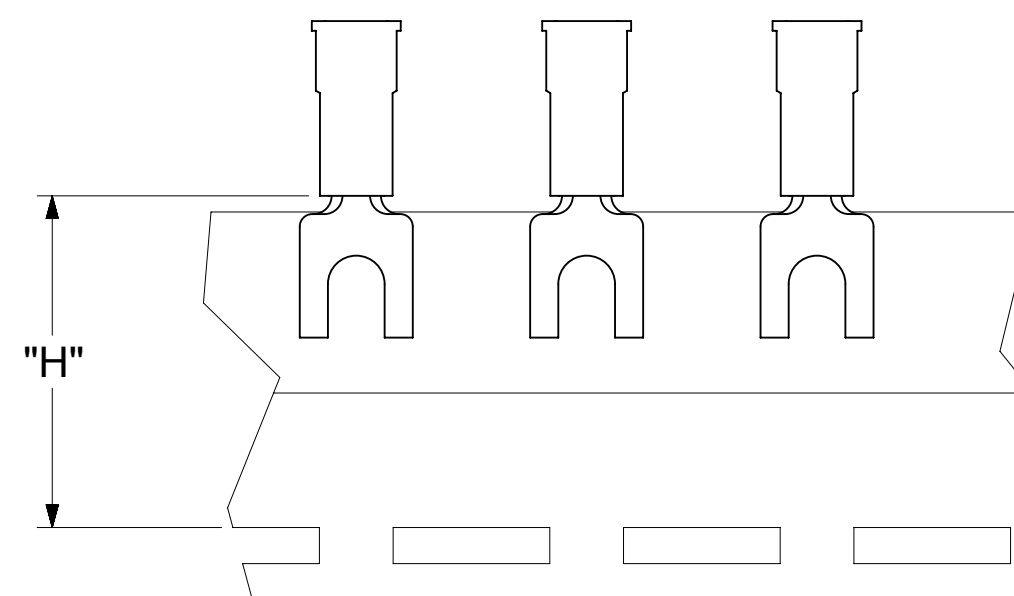
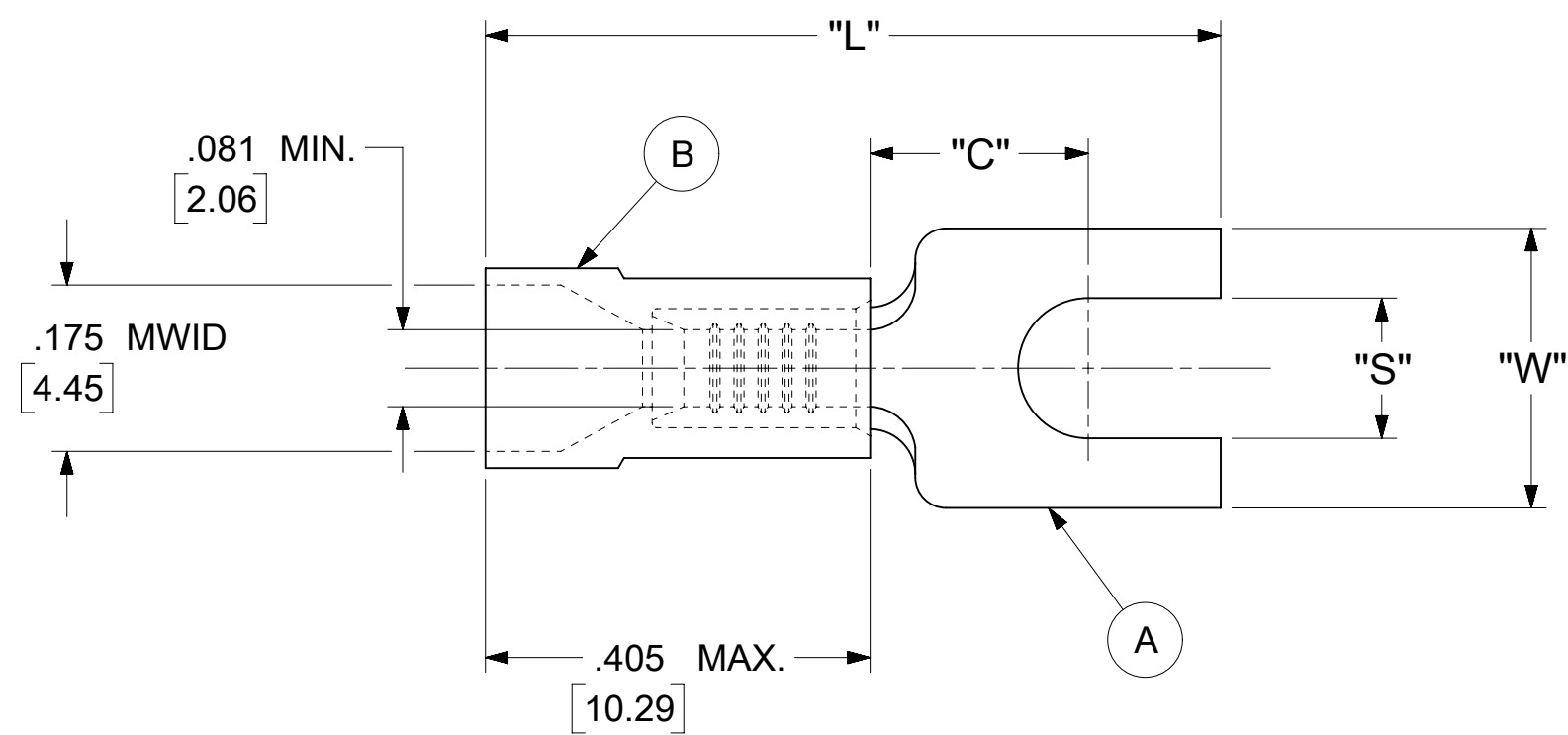


LOOSE PIECE		TAPE MOUNTED		SPECIFICATIONS						
MATERIAL NUMBER	ENGINEERING NUMBER	MATERIAL NUMBER	ENGINEERING NUMBER	STUD SIZE	"S" ±.005 [0.13]	"W" ±.010 [0.25]	"C" MIN.	"L" MAX.	"H"	STOCK ±.001[0.25] THICKNESS
191310025	BB-2471-04X	191310024	BB-2471-04XT	4	.119 [3.02]	.245 [6.22]	.224 [5.69]	.785 [19.94]	.980 [24.89]	.031 [0.79]
191310023	BB-2471-06X	191310022	BB-2471-06XT	6	.146 [3.71]					



PARTS ON TAPE

NOTES:

- MATERIAL:
 - (A). SPADE TONGUE TERMINAL: COPPER
PLATING: ELECTRO-TIN (.0003 MIN.)
 - (B). INSULATION: MOLDED PVC (BLUE)
- MWID: MAXIMUM WIRE INSULATION DIAMETER
- WIRE SIZE: 16 -14 AWG
1.0 -2.5 MM²
- "UL" LISTING #E32244
"CSA" LISTING #18689
- ALL DIMENSIONS IN INCHES/[MM].
- PARTS ARE ROHS COMPLIANT.
- DIMS. SHOWN ARE FOR REFERENCE ONLY.

SYMBOLS	THIS DRAWING CONTAINS INFORMATION THAT IS PROPRIETARY TO MOLEX ELECTRONIC TECHNOLOGIES, LLC AND SHOULD NOT BE USED WITHOUT WRITTEN PERMISSION												
	DIMENSION UNITS	SCALE		CURRENT REV DESC: MIGRATION TO ECTR/NX									
∇ = 0	INCH/MM	NTS		EC NO: 620815									
∇ = 0	GENERAL TOLERANCES (UNLESS SPECIFIED)			DRWN: ABENJAMINLW 2019/07/01						SPADE TONGUE TERMINAL INSULKRIMP 200-SERIES			
∇ = 0		MM	INCH	CHK'D: GROJAS01 2019/07/18									
S = 0	4 PLACES	±	---	±	---	APPR: JMACNEIL 2019/08/05				PRODUCT CUSTOMER DRAWING			
∇ = 0	3 PLACES	±	---	±	.005	INITIAL REVISION:							
∇ = 0	2 PLACES	±	0.13	±	.01	DRWN: JJ 1984/11/06				DOCUMENT NUMBER 191440028			
∇ = 0	1 PLACE	±	0.25	±	---	APPR: JMACNEIL 2019/08/05							
∇ = 0	0 PLACES	±	---	±	---	ANGULAR TOL ± 0.5°				DOC TYPE DOC PART REVISION PSD 000 A			
∇ = 0	DRAFT WHERE APPLICABLE MUST REMAIN WITHIN DIMENSIONS			THIRD ANGLE PROJECTION		DRAWING		SERIES					
∇ = 0				C-SIZE		19144		MATERIAL NUMBER		CUSTOMER		SHEET NUMBER	
						SEE TABLE			GENERAL MARKET			1 OF 1	

NOTES: $\pm .001$

① MAT'L: COPPER (STOCK TKN. $\frac{.031}{.79}$)

PLATING: ELECTRO-TIN (.0003 MIN.)

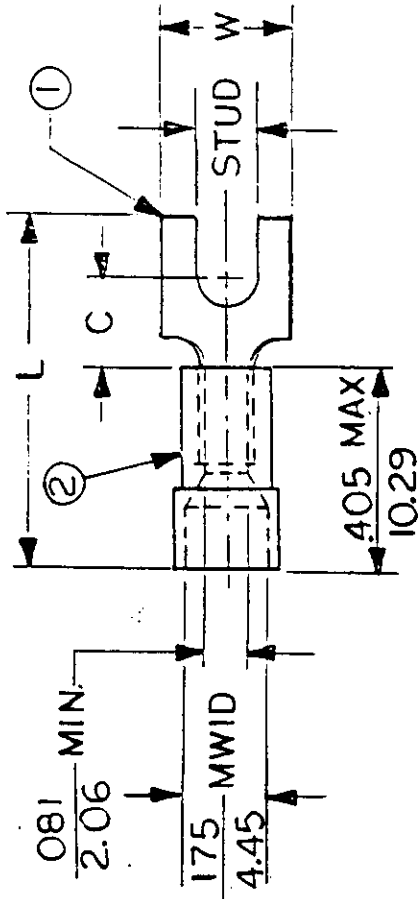
② INSULATION: MOLDED PVC (BLUE)

STUD SIZES: ($\pm .005$)

- 02 = .094
- 04 = .119
- 06 = .146
- 08 = .173
- 10 = .198
- 14 = .265
- 56 = .328
- 38 = .390

"UL" LISTING #E32244
 "CSA" LISTING #18689

ALL DIMENSIONS = $\frac{\text{INCHES}}{\text{MM}}$



MWID = MAXIMUM WIRE INSULATION DIAMETER
 WIRE SIZE: 16 - 14 AWG
 1.0 - 2.5MM²

PART NUMBER	"W" $\pm .010$	"C" MIN.	"L" MAX.	REFERENCE	SCALE: NTS	DATE	TITLE:	DIMENSIONAL TOLERANCES UNLESS OTHERWISE SPECIFIED		
								FRAC.	DEC.	ANG.
BB-281-	$\frac{.420}{10.67}$	$\frac{.235}{5.97}$	$\frac{.875}{22.23}$			11-6-84	SPADE TONGUE TERMINAL			
BB-284-	$\frac{.375}{9.53}$	$\frac{.235}{5.97}$	$\frac{.870}{22.10}$			11-14-84	INSULKRIMP 200 SERIES			
BB-287-	$\frac{.325}{8.26}$	$\frac{.235}{5.97}$	$\frac{.868}{22.05}$							
BB-2471-	$\frac{.245}{6.22}$	$\frac{.224}{5.69}$	$\frac{.785}{19.94}$							

EIC ^{molex} INCORPORATED

DWG. NO. A	CUSTOMER DWG.
------------	---------------