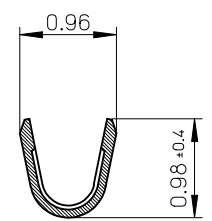
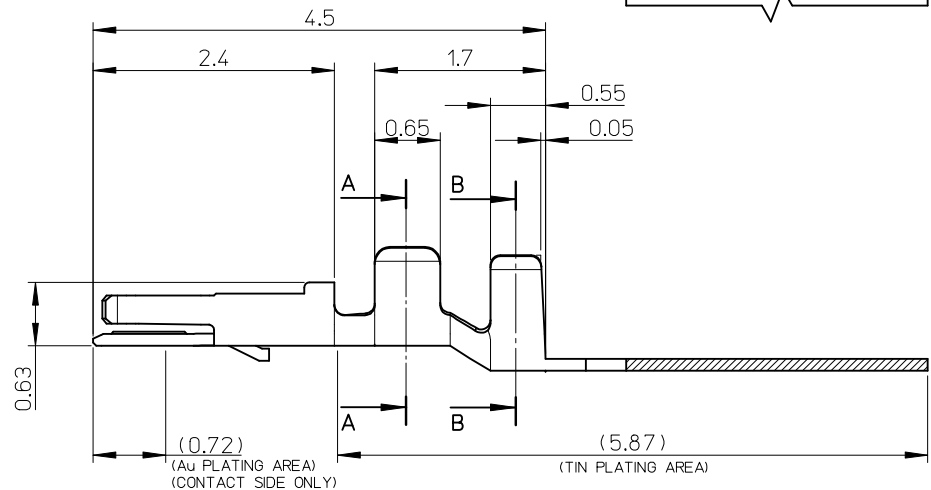
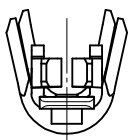
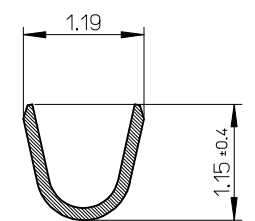


NOTES

- 適合ハウジング: 503764シリーズ  
APPLICABLE HPUSING : 503764 SERIES
- 材質 : 銅合金  
MATERIAL : COPPER ALLOY
- メッキ仕様  
PLATING  
接点部: 金メッキ  
バレル部: 錫メッキ  
ニッケル下地メッキ  
CONTACT : GOLD PLATING  
BARREL : TIN PLATING  
NICKEL UNDER PLATING
- 圧着後CS-503765-001の内容を満たす事  
FULFILL THE CONTENTS OF CS-503765-001  
AFTER CRIMP.
- 圧着時の注意事項としてATS-57427-000を参照  
AS ATTENTION AT THE TIME OF CRIMP,  
REFER TO ATS-57427-000



SECTION A-A



SECTION B-B

∅ 0.5 - 0.7 mm	AWG #28 -30	5037650098	CHAIN
INS. RANGE	WIRE RANGE	ORDER No.	FORM

RELEASED EC NO: J2014-1278 DRWN: YWAKE 2014/03/03 CHKD: KASAKAWA 2014/03/03 APPR: NUKITA 2014/03/05	GENERAL TOLERANCES (UNLESS SPECIFIED)		DIMENSION STYLE		SCALE	DESIGN UNITS	THIRD ANGLE PROJECTION  1.0 WORE TO BOARD CONN. R/A H=1.5MM REC CRIMP TERM  <b>molex</b> SD-503765-001 SHEET NO. 1 OF 1
			MM ONLY		20:1	METRIC	
	10 UNDER	± 0.2	DRAWN BY	DATE	TITLE		
	10 OVER 30 UNDER	± 0.25	YWAKE	2014/03/03	SEE CHART		
30 OVER	± 0.3	CHECKED BY	DATE				
		KASAKAWA	2014/03/03				
		APPROVED BY	DATE				
		NUKITA	2014/03/05				
		MATERIAL NO.		DOCUMENT NO.			
		SEE CHART		SD-503765-001			
		THIS DRAWING CONTAINS INFORMATION THAT IS PROPRIETARY TO MOLEX INCORPORATED AND SHOULD NOT BE USED WITHOUT WRITTEN PERMISSION					