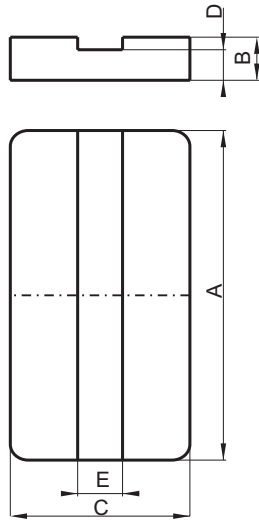


Specification for:
CR-42216-IC

111 Zeta Drive
Pittsburgh, PA 15238
Phone: 412/696-1333
Fax: 412/696-0333
Email: magnetics@spang.com

DIMENSIONS



(mm)	Nominal:	Tol.min.:	Tol.max.:
(A)	21.8	-0.4	+0.4
(B)	2.9	-0.05	+0.05
(C)	15.8	-0.3	+0.3
(D)	2.5	-0.1	+0.1
(E)	2.9	0	+0.2
Eff. Parameters with CR-42216-EC			
Ae mm²	Amin. mm²	le mm	Ve mm³
80.4	72.5	26.1	2100

INDUCTANCE

AI value (nH) with CR-42216-EC	Test conditions
Nominal: 5956 Minimum: 4467	10 kHz, 0.5 mT, 25°C

CORE LOSSES

P_i max	Test conditions
88 mW/cm ³ (0.18 W/set) 595 mW/cm ³ (1.25 W/set)	100 kHz, 100 mT, 100°C 100 kHz, 200 mT, 100°C

MARKING

NO MARKING

NOTE

Spec. modification	Previous	Revised
2005.06.16	A=21.6±0.26 LOSSES: GENERAL R MATERIAL	A=21.8±0.4 LOSSES: DETAIL AS INDICATED