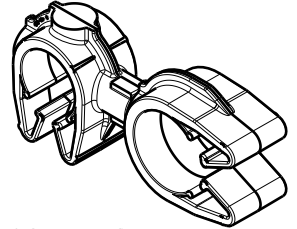
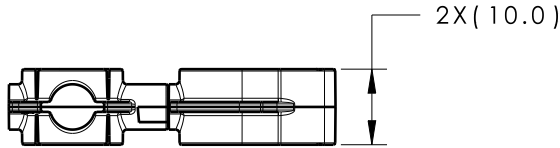
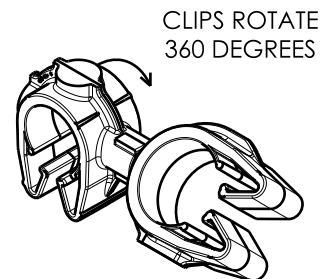
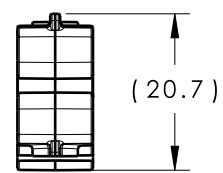
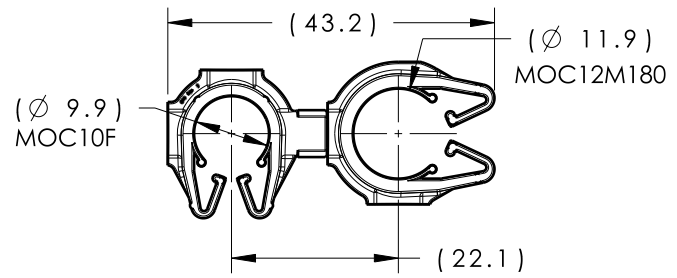


| Revision Level |                |      | Revision Record | Changed | Date    | Approved | Date    |
|----------------|----------------|------|-----------------|---------|---------|----------|---------|
| Drawing        | State          | Part |                 |         |         |          |         |
| 00.0           | Design Release | -    | SEE ECN# 014503 | TAT     | 6/28/18 | EJH      | 6/28/18 |



ISOMETRIC VIEW



CLIPS ROTATE 360 DEGREES

ISOMETRIC VIEW ROTATED

| TYPE           | MOC10F        | MOC12M180     |
|----------------|---------------|---------------|
| HARNESS        | 10.0MM-11.5MM | 11.5MM-13.0MM |
| HOSE           | 9.5MM-11.5MM  | 10.5MM-13.0MM |
| HARD PIPE/TUBE | 10.0MM-11.5MM | 12.0MM-13.8MM |

\*RECOMMENDED SIZES MAY DIFFER DEPENDING ON THE APPLICATION, PRODUCT REQUIREMENTS AND MATERIALS USED

\*\*PATENT PENDING 29/582,271\*\*

| GLOBAL PART DESCRIPTION        | MOC10F**        |             |       | MOC12M180**     |             |       |
|--------------------------------|-----------------|-------------|-------|-----------------|-------------|-------|
|                                | DRAWING         | MATERIAL    | COLOR | DRAWING         | MATERIAL    | COLOR |
| MOC10FMOC12M180-PA66HIRHSUV-BK | 16-0318-000-CSU | PA66HIRHSUV | BLACK | 16-0319-000-CSU | PA66HIRHSUV | BLACK |

|   |                                     |                    |  |  |     |         |                                    |   |                 |         |    |
|---|-------------------------------------|--------------------|--|--|-----|---------|------------------------------------|---|-----------------|---------|----|
| Material<br>SEE CHART<br>COLOR: SEE CHART | Units                               | millimeters        | The copyright of this drawing is reserved by HellermannTyton. It is issued on condition that it is not reproduced, copied or disclosed to a third party, either wholly or in part, without the consent of HellermannTyton. | Drawn  | TAT | 6/27/18 | Article/Type-No<br>MOC10FMOC12M180 | Scale                                   | 1:1             |         |    |
|   | Tolerance defined on each dimension | PRODUCTION : Phase |  | Approved   | EJH | 6/27/18 |                                    | Title<br>10MM MOC COUPLED TO A 12MM MOC | Project Number  | 16-0330 |    |
|   |                                     |                    |  | <br>North America<br>Email: corp@htamericas.com<br>Web: www.hellermann.tyton.com |     |         | Drawing-No                         |   | 16-0330-333-CSU | Format  | AH |
|   |                                     |                    |  |  |     |         | Sheet                              |   | 1/1             |         |    |