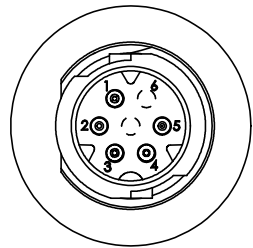
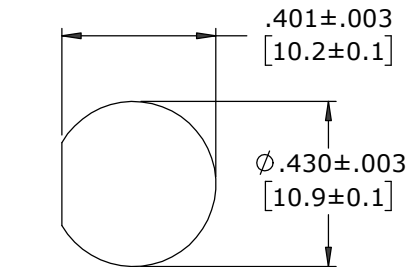


ASS'Y P/N	NO. OF CONTACTS	KEY STYLE
W17982-5PG-P-300	5 #26	A-KEY
W17982-6PG-P-300	6 #26	B-KEY
W17982-7PG-P-300	7 #26	A-KEY

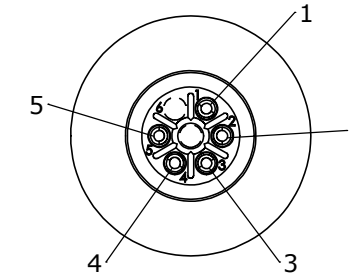
- NOTES:
 1. ALL PARTS TO BE BULK PACKED
 2. CONTACTS INSERTED INTO CONNECTOR WITH SOLDER CUPS FACING OUTWARD RADIALLY. THE CENTER CONTACT SHOULD BE FACING BETWEEN POSITION 1 AND 6
 3. ALL DIMENSIONS ARE REFERENCE EXCEPT THOSE WITH A TOLERANCE



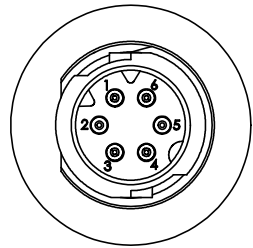
FACE VIEW
 W17982-5PG-P-300
 5 POSITION
 A-KEY



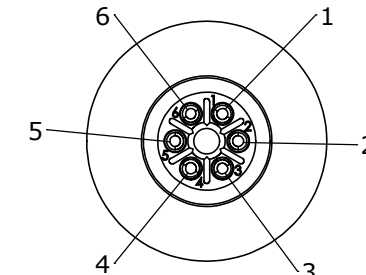
**RECCOMENDED
 PANEL CUT-OUT**



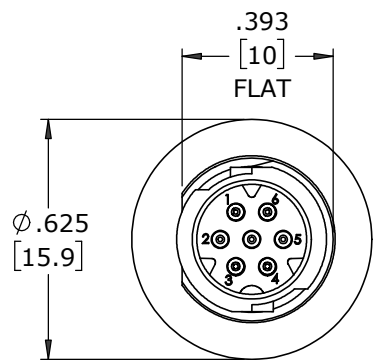
WIRE VIEW
 W17982-5PG-P-300



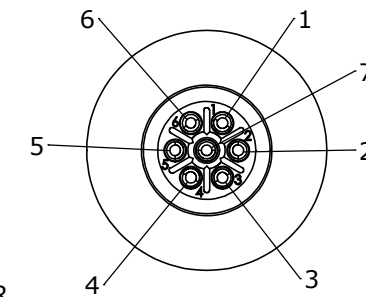
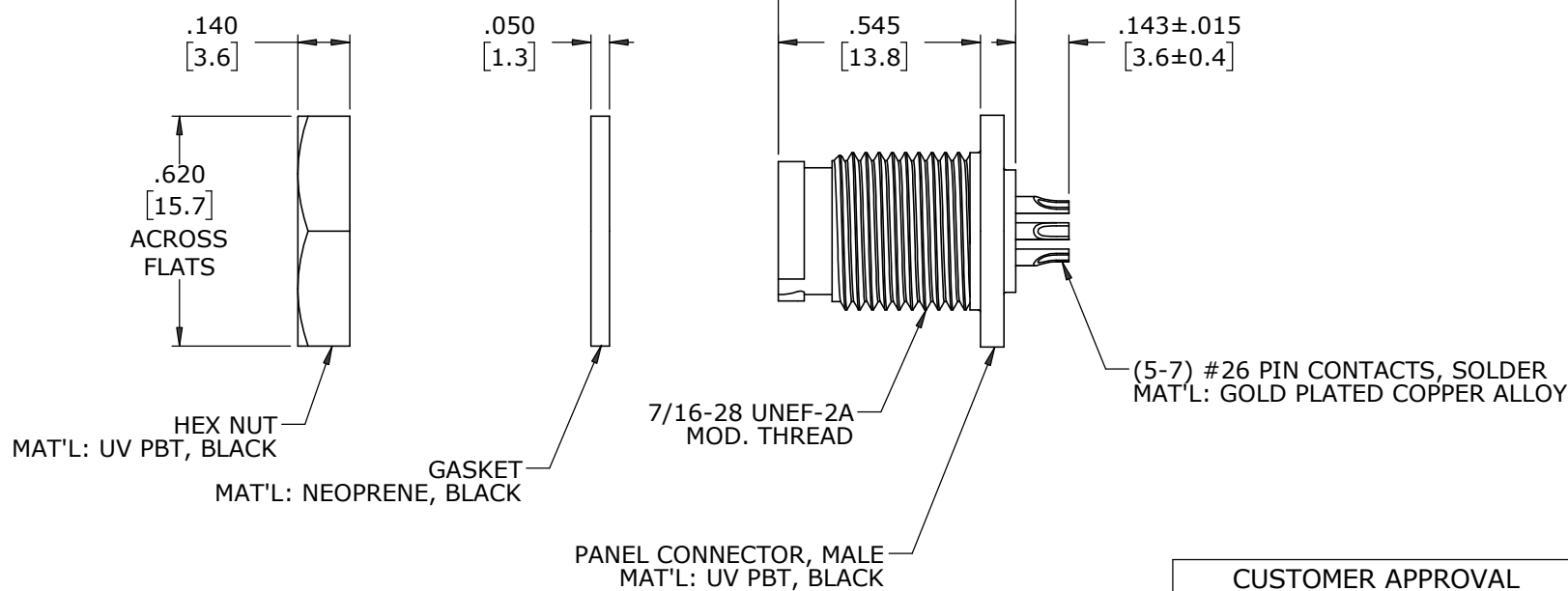
FACE VIEW
 W17982-6PG-P-300
 6 POSITION
 B-KEY



WIRE VIEW
 W17982-6PG-P-300



FACE VIEW
 W17982-7PG-P-300
 7 POSITION
 A-KEY



WIRE VIEW
 W17982-7PG-P-300

CUSTOMER PRINT

PART NUMBER: W17982-XPG-P-300

CUSTOMER APPROVAL

THIS DOCUMENT CONTAINS CONFIDENTIAL INFORMATION PROPRIETARY TO CONXALL CORPORATION. ANY REPRODUCTION, DISCLOSURE, OR USE OF THIS DOCUMENT /INFORMATION IS EXPRESSLY PROHIBITED UNLESS AUTHORIZED IN WRITING BY CONXALL CORPORATION.

APPROVED BY: _____
 DATE: _____

MA	08-10-20	RELEASED PER PDR 18004-2
A	JGK	8/14/19
REV.	INIT.	DATE
ALL INFORMATION ILLUSTRATED IS THE PROPERTY OF "CONXALL CORPORATION". UNAUTHORIZED DUPLICATION OR DISTRIBUTION OF THIS DOCUMENT IS PROHIBITED.		DESCRIPTION
ALL UNITS ARE IN FEET, INCHES, FRACTIONS OF INCHES AND DECIMALS.		ORIG. DRAWN BY: JGK
		DATE: 8/14/19
		CHECKED BY:
		APPROVED BY:
SCALE	SIZE	SHEET
NTS	B	1 OF 1
FILE:	DIRECTORY:	PART NUMBER:
W17982-XPG-P-300	SLW	W17982-XPG-P-300
		REV A



601 E. WILDWOOD VILLA PARK, IL 60181

TITLE: PANEL MOUNT ASSEMBLY (5-7) #26 PIN CONTACTS, SOLDER INSTA-CLICK™ MICRO-CON-X STANDARD PRODUCT

DIMENSIONS IN BRACKETS [] ARE IN MILLIMETERS UNLESS INDICATED

RoHS COMPLIANT

CRITICAL CHARACTERISTIC FLAG PER SPEC. XXXX