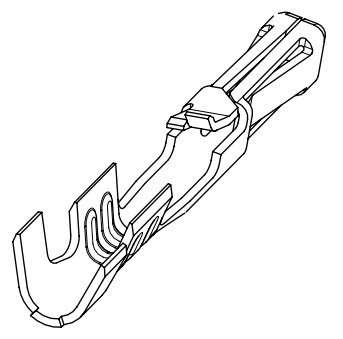


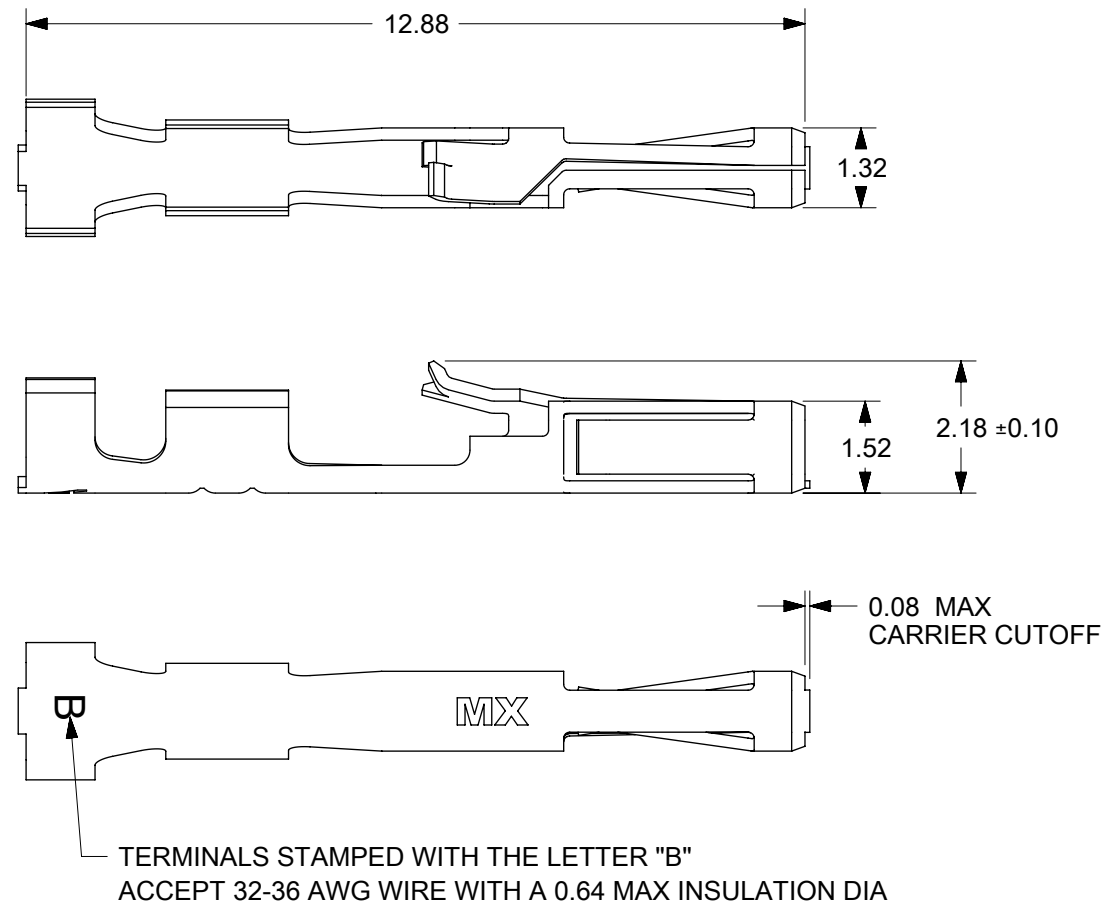
- NOTES:
1. MATERIAL: PHOSPHOR BRONZE
  2. PLATING:
    - 124 = SELECT BRIGHT TIN: 3.75 MICROMETERS MIN OVER NICKEL
    - 207 = SELECT HARD GOLD: 0.38 MICROMETERS MIN.  
SELECT TIN: 2.0 MICROMETERS MIN BOTH OVER NICKEL
    - 206 = SELECT HARD GOLD: 0.75 MICROMETERS MIN.  
SELECT TIN: 2.0 MICROMETERS MIN BOTH OVER NICKEL
    - P124 = PREPLATED OVERALL BRIGHT TIN: 3.75 MICROMETERS MIN OVER NICKEL  
(MAY HAVE UNPLATED EDGES)
  3. PRODUCT SPECIFICATION: TERMINALS CONFORM TO PS-70058 AND PS-70400 WHEN CRIMPED WITH MOLEX CRIMP TOOLS.
  4. COSMETIC SPECIFICATION: PS-45499-002 CLASS B
  5. TERMINAL FOR USE WITH HOUSING SERIES 70066 AND 70450
  6. WIRE SPECIFICATION: TERMINALS STAMPED WITH THE LETTER:
    - A = ACCEPTS 24-30 AWG STRANDED WIRE WITH A 1.52 MAX INSULATION DIA
    - B = ACCEPTS 32-36 AWG STRANDED WIRE WITH A 0.64 MAX INSULATION DIA.
    - C = ACCEPTS 22-24 AWG STRANDED WIRE WITH A 1.63 MAX INSULATION DIA

**TERMINALS ON THIS SHEET ARE FOR USE WITH 24-30 AWG WIRE. SEE SHEETS 2 AND 3 FOR OTHER WIRE SIZES**



| MATERIAL NO: | PACKAGING | PLATING<br>SEE NOTE 2 | WIRE<br>SIZE | MAX<br>INSULATION DIA |
|--------------|-----------|-----------------------|--------------|-----------------------|
| 70058-1069   | REEL      | 124<br>SELECT TIN     | 24-30<br>AWG | 1.52 DIA MAX          |
| 70058-1096   | LOOSE     |                       |              |                       |
| 70058-0082   | REEL      | 207<br>0.38 GOLD      |              |                       |
| 70058-0097   | LOOSE     |                       |              |                       |
| 70058-0083   | REEL      | 206<br>0.75 GOLD      |              |                       |
| 70058-0098   | LOOSE     |                       |              |                       |

|   |                     |   |  |       |                 |        |                |          |          |
|---|---------------------|---|--|-------|-----------------|--------|----------------|----------|----------|
| THIS DRAWING CONTAINS INFORMATION THAT IS PROPRIETARY TO MOLEX ELECTRONIC TECHNOLOGIES, LLC AND SHOULD NOT BE USED WITHOUT WRITTEN PERMISSION |                     |   |  |       |                 |        |                |          |          |
| DIMENSION UNITS<br><b>mm</b>  | SCALE<br><b>8:1</b> | CURRENT REV DESC: OBSOLETE PART NUMBER<br>AS PER PCN#508517 |  |       | <b>molex</b>    |        |                |          |          |
| GENERAL TOLERANCES<br>(UNLESS SPECIFIED)  |                     | EC NO: 667105<br>DRWN: SUGEEB<br>CHK'D: GGA<br>APPR: GGA    |  |       |                 |        |                |          |          |
| ANGULAR TOL   | ± °                 | INITIAL REVISION:   |  |       | DOCUMENT NUMBER |        | DOC TYPE       | DOC PART | REVISION |
| 4 PLACES  | ±                   | 2021/05/27  |  |       | 700580000-SD    |        | PSD            | 000      | B2       |
| 3 PLACES  | ±                   | 2021/06/29  |  |       | MATERIAL NUMBER |        | CUSTOMER       |          |          |
| 2 PLACES  | ± 0.15              | 2017/05/03  |  |       | SEE TABLE       |        | GENERAL MARKET |          |          |
| 1 PLACE   | ± 0.25              | 2017/06/16  |  |       | SERIES          |        | SHEET NUMBER   |          |          |
| 0 PLACES  | ± 0.0               | THIRD ANGLE PROJECTION                                      |  |       | B-SIZE          |        | 70058          |          |          |
| DRAFT WHERE APPLICABLE<br>MUST REMAIN<br>WITHIN DIMENSIONS  |                     | DRAWING   |  | 70058 |                 | 1 OF 4 |                |          |          |



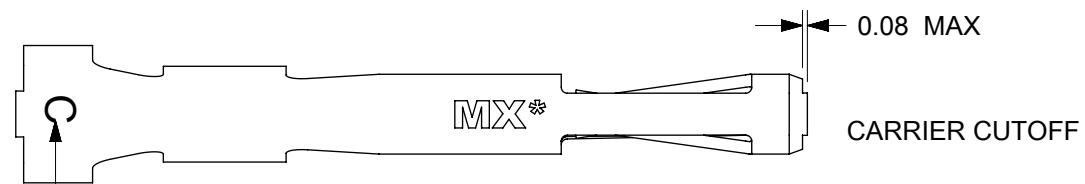
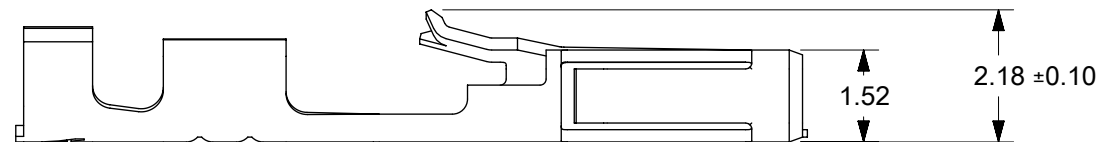
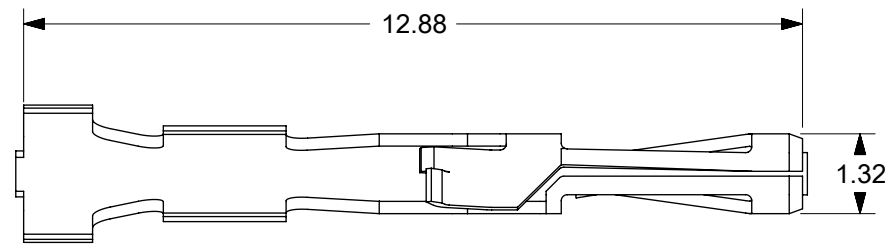
NOTES:

1. MATERIAL: PHOSPHOR BRONZE
2. PLATING:
  - 124 = SELECT BRIGHT TIN: 3.75 MICROMETERS MIN OVER NICKEL
  - 207 = SELECT HARD GOLD: 0.38 MICROMETERS MIN.  
SELECT TIN: 2.0 MICROMETERS MIN BOTH OVER NICKEL
  - 206 = SELECT HARD GOLD: 0.75 MICROMETERS MIN.  
SELECT TIN: 2.0 MICROMETERS MIN BOTH OVER NICKEL
  - P124 = PREPLATED OVERALL BRIGHT TIN: 3.75 MICROMETERS MIN OVER NICKEL  
(MAY HAVE UNPLATED EDGES)
3. PRODUCT SPECIFICATION: TERMINALS CONFORM TO PS-70058 AND PS-70400 WHEN CRIMPED WITH MOLEX CRIMP TOOLS.
4. COSMETIC SPECIFICATION: PS-45499-002 CLASS B
5. TERMINAL FOR USE WITH HOUSING SERIES 70066 AND 70450
6. WIRE SPECIFICATION: TERMINALS STAMPED WITH THE LETTER:
  - A = ACCEPTS 24-30 AWG STRANDED WIRE WITH A 1.52 MAX INSULATION DIA
  - B = ACCEPTS 32-36 AWG STRANDED WIRE WITH A 0.64 MAX INSULATION DIA.
  - C = ACCEPTS 22-24 AWG STRANDED WIRE WITH A 1.63 MAX INSULATION DIA

**TERMINALS ON THIS SHEET ARE FOR USE  
WITH 32-36 AWG WIRE.  
SEE SHEETS 1 AND 3 FOR OTHER WIRE SIZES**

| MATERIAL NO: | PACKAGING | PLATING<br>SEE NOTE 2 | WIRE<br>SIZE   | MAX<br>INSULATION DIA |
|--------------|-----------|-----------------------|----------------|-----------------------|
| 70058-1084   | REEL      | 124<br>SELECT TIN     | 32 - 36<br>AWG | 0.64 DIA MAX          |
| 70058-1099   | LOOSE     |                       |                |                       |
| 70058-0074   | REEL      | 207<br>0.38 GOLD      |                |                       |
| 70058-0100   | LOOSE     |                       |                |                       |
| 70058-0085   | REEL      | 206<br>0.75 GOLD      |                |                       |
| 70058-0101   | LOOSE     |                       |                |                       |

|   |       |   |         |        |                                       |  |                |  |        |
|---|-------|---|---------|--------|---------------------------------------|--|----------------|--|--------|
| THIS DRAWING CONTAINS INFORMATION THAT IS PROPRIETARY TO MOLEX ELECTRONIC TECHNOLOGIES, LLC AND SHOULD NOT BE USED WITHOUT WRITTEN PERMISSION |       |   |         |        |                                       |  |                |  |        |
| DIMENSION UNITS   | SCALE | CURRENT REV DESC: OBSOLETE PART NUMBER<br>AS PER PCN#508517 |         |        | <b>molex</b>                          |  |                |  |        |
| mm  | 8:1   |   |         |        |                                       |  |                |  |        |
| GENERAL TOLERANCES<br>(UNLESS SPECIFIED)  |       | EC NO: 667105   |         |        | SL CRIMP TERMINAL<br>(32-36 AWG WIRE) |  |                |  |        |
| ANGULAR TOL ± °   |       | DRWN: SUGEEB 2021/05/27                                     |         |        |                                       |  |                |  |        |
| 4 PLACES ±  |       | CHK'D: GGA 2021/06/29                                       |         |        | PRODUCT CUSTOMER DRAWING              |  |                |  |        |
| 3 PLACES ±  |       | APPR: GGA 2021/06/29  |         |        |                                       |  |                |  |        |
| 2 PLACES ± 0.15   |       | INITIAL REVISION:   |         |        | DOCUMENT NUMBER                       |  |                |  |        |
| 1 PLACE ± 0.25  |       | DRWN: KSAMIEC 2017/05/03                                    |         |        |                                       |  |                |  |        |
| 0 PLACES ± 0.0  |       | APPR: FSMITH 2017/06/16                                     |         |        | 700580000-SD PSD 000 B2               |  |                |  |        |
| DRAFT WHERE APPLICABLE<br>MUST REMAIN<br>WITHIN DIMENSIONS  |       | THIRD ANGLE PROJECTION                                      | DRAWING | SERIES |                                       |  |                |  |        |
|   |       |   | B-SIZE  | 70058  | SEE TABLE                             |  | GENERAL MARKET |  | 2 OF 4 |



TERMINALS STAMPED WITH THE LETTER "C"  
ACCEPT 22-24 AWG WIRE WITH A 1.63 MAX INSULATION DIA



NOTES:

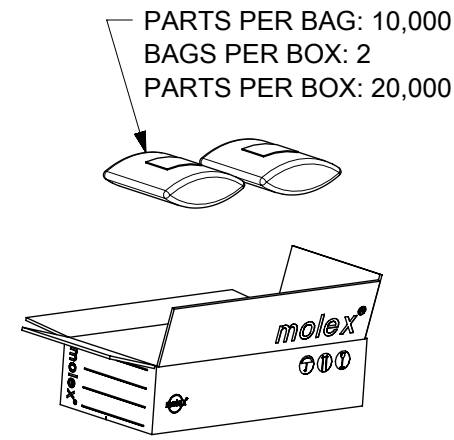
1. MATERIAL: PHOSPHOR BRONZE
2. PLATING:
  - 124 = SELECT BRIGHT TIN: 3.75 MICROMETERS MIN OVER NICKEL
  - 207 = SELECT HARD GOLD: 0.38 MICROMETERS MIN.  
SELECT TIN: 2.0 MICROMETERS MIN BOTH OVER NICKEL
  - 206 = SELECT HARD GOLD: 0.75 MICROMETERS MIN.  
SELECT TIN: 2.0 MICROMETERS MIN BOTH OVER NICKEL
  - P124 = PREPLATED OVERALL BRIGHT TIN: 3.75 MICROMETERS MIN OVER NICKEL  
(MAY HAVE UNPLATED EDGES)
3. PRODUCT SPECIFICATION: TERMINALS CONFORM TO PS-70058 AND PS-70400 WHEN CRIMPED WITH MOLEX CRIMP TOOLS.
4. COSMETIC SPECIFICATION: PS-45499-002 CLASS B
5. TERMINAL FOR USE WITH HOUSING SERIES 70066 AND 70450
6. WIRE SPECIFICATION: TERMINALS STAMPED WITH THE LETTER:
  - A = ACCEPTS 24-30 AWG STRANDED WIRE WITH A 1.52 MAX INSULATION DIA
  - B = ACCEPTS 32-36 AWG STRANDED WIRE WITH A 0.64 MAX INSULATION DIA.
  - C = ACCEPTS 22-24 AWG STRANDED WIRE WITH A 1.63 MAX INSULATION DIA

**TERMINALS ON THIS SHEET ARE FOR USE  
WITH 22-24 AWG WIRE.  
SEE SHEETS 1 AND 2 FOR OTHER WIRE SIZES**

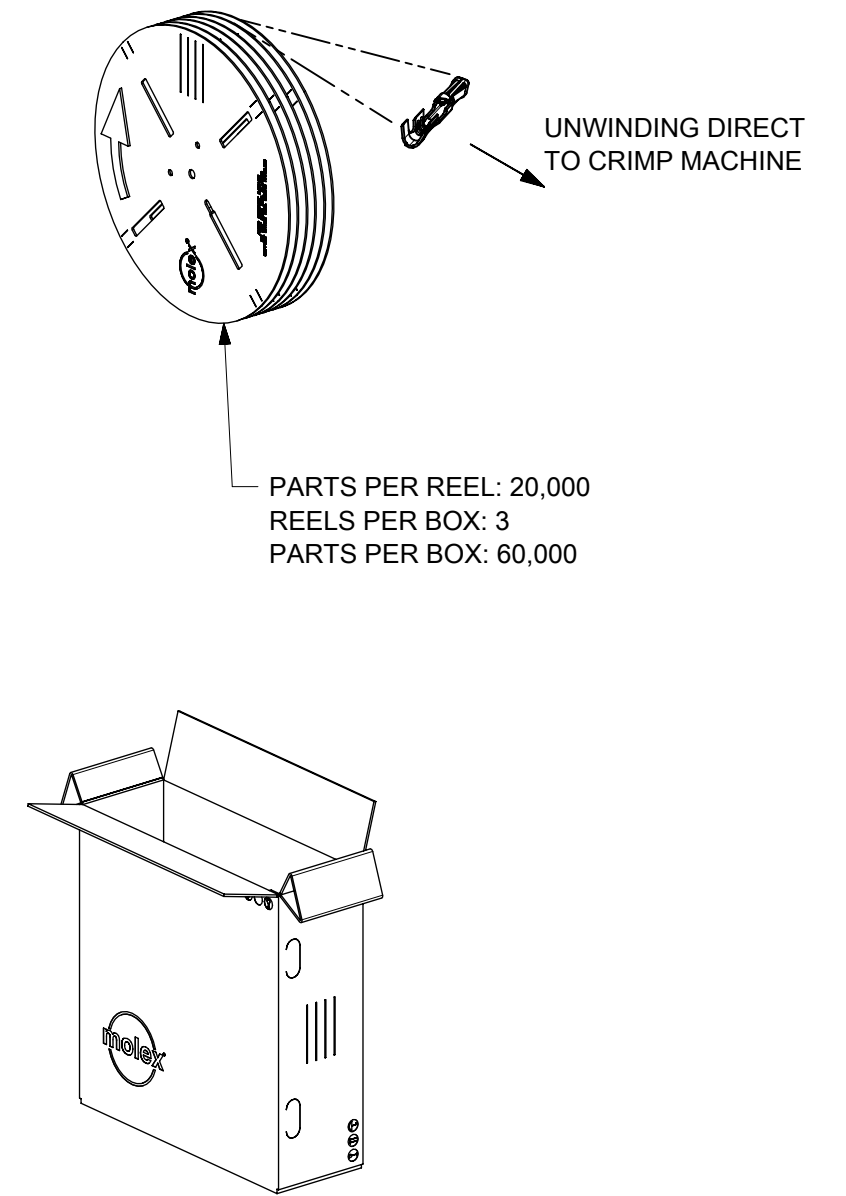
| MATERIAL NO: | PACKAGING | PLATING<br>SEE NOTE 2 | WIRE<br>SIZE | MAX<br>INSULATION DIA |
|--------------|-----------|-----------------------|--------------|-----------------------|
| 70058-1086   | REEL      | 124<br>SELECT TIN     | 22-24<br>AWG | 1.63 DIA MAX          |
| 70058-1102   | LOOSE     |                       |              |                       |
| 70058-0086   | REEL      | P124<br>OVERALL TIN   |              |                       |
| 70058-0102   | LOOSE     |                       |              |                       |
| 70058-0087   | REEL      | 207<br>0.38 GOLD      |              |                       |
| 70058-0103   | LOOSE     |                       |              |                       |
| 70058-0088   | REEL      | 206<br>0.75 GOLD      |              |                       |
| 70058-0104   | LOOSE     |                       |              |                       |

|   |       |   |         |        |                 |                                       |  |              |          |              |
|---|-------|---|---------|--------|-----------------|---------------------------------------|--|--------------|----------|--------------|
| THIS DRAWING CONTAINS INFORMATION THAT IS PROPRIETARY TO MOLEX ELECTRONIC TECHNOLOGIES, LLC AND SHOULD NOT BE USED WITHOUT WRITTEN PERMISSION |       |   |         |        |                 |                                       |  |              |          |              |
| DIMENSION UNITS   | SCALE | CURRENT REV DESC: OBSOLETE PART NUMBER<br>AS PER PCN#508517 |         |        |                 | <b>molex</b>                          |  |              |          |              |
| mm  | 8:1   |   |         |        |                 |                                       |  |              |          |              |
| GENERAL TOLERANCES<br>(UNLESS SPECIFIED)  |       | EC NO: 667105   |         |        |                 | SL CRIMP TERMINAL<br>(22-24 AWG WIRE) |  |              |          |              |
| ANGULAR TOL ± °   |       | DRWN: SUGEEB 2021/05/27                                     |         |        |                 |                                       |  |              |          |              |
| 4 PLACES ±  |       | CHK'D: GGA 2021/06/29                                       |         |        |                 | PRODUCT CUSTOMER DRAWING              |  |              |          |              |
| 3 PLACES ±  |       | APPR: GGA 2021/06/29  |         |        |                 |                                       |  |              |          |              |
| 2 PLACES ± 0.15   |       | INITIAL REVISION:   |         |        |                 | DOCUMENT NUMBER                       |  | DOC TYPE     | DOC PART | REVISION     |
| 1 PLACE ± 0.25  |       | DRWN: KSAMIEC 2017/05/03                                    |         |        |                 | 700580000-SD                          |  | PSD          | 000      | B2           |
| 0 PLACES ± 0.0  |       | APPR: FSMITH 2017/06/16                                     |         |        |                 | MATERIAL NUMBER                       |  | CUSTOMER     |          | SHEET NUMBER |
| DRAFT WHERE APPLICABLE<br>MUST REMAIN<br>WITHIN DIMENSIONS  |       | THIRD ANGLE PROJECTION                                      | DRAWING | SERIES | MATERIAL NUMBER | CUSTOMER                              |  | SHEET NUMBER |          |              |
|   |       |   | B-SIZE  | 70058  | SEE TABLE       | GENERAL MARKET                        |  | 3 OF 4       |          |              |

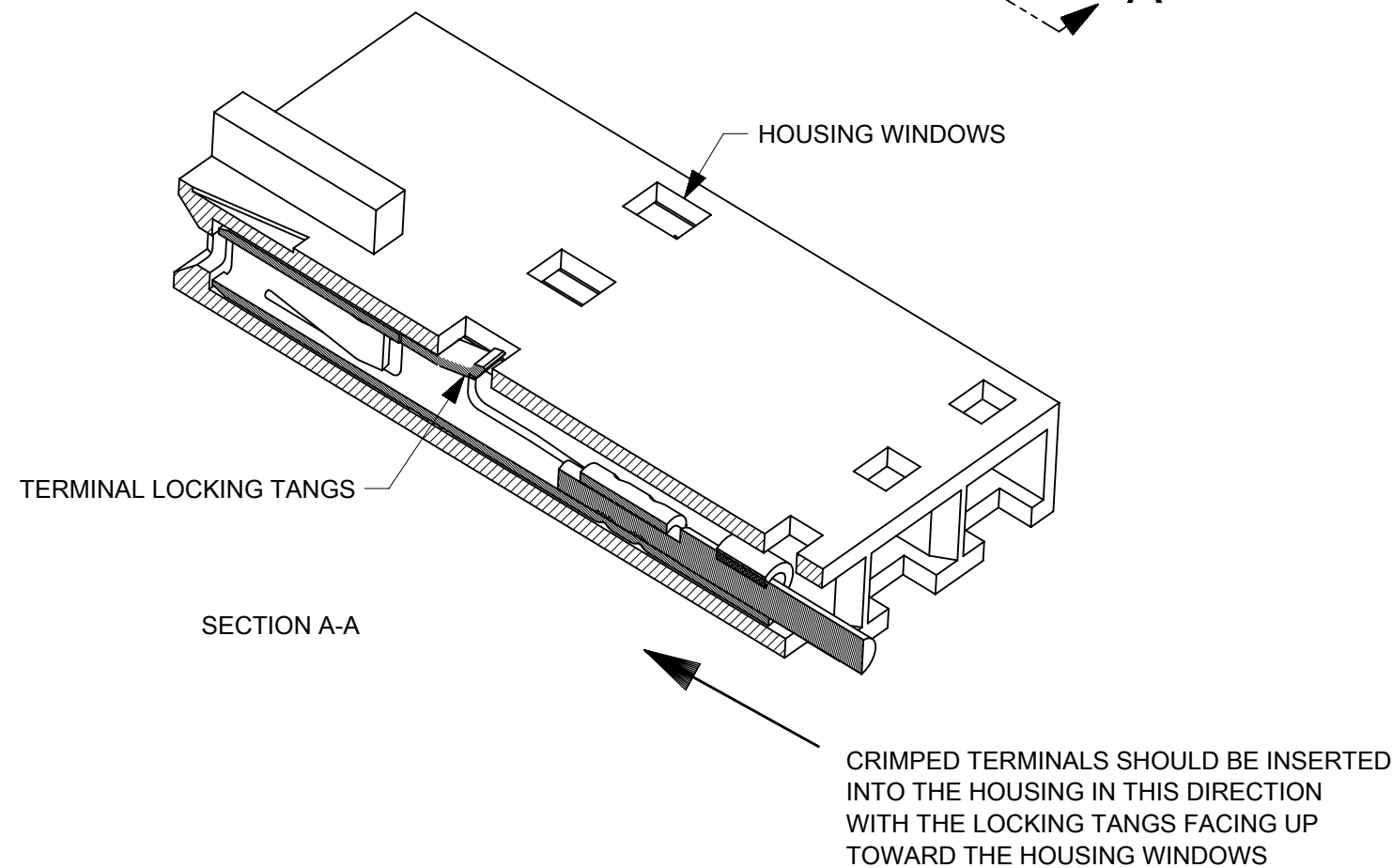
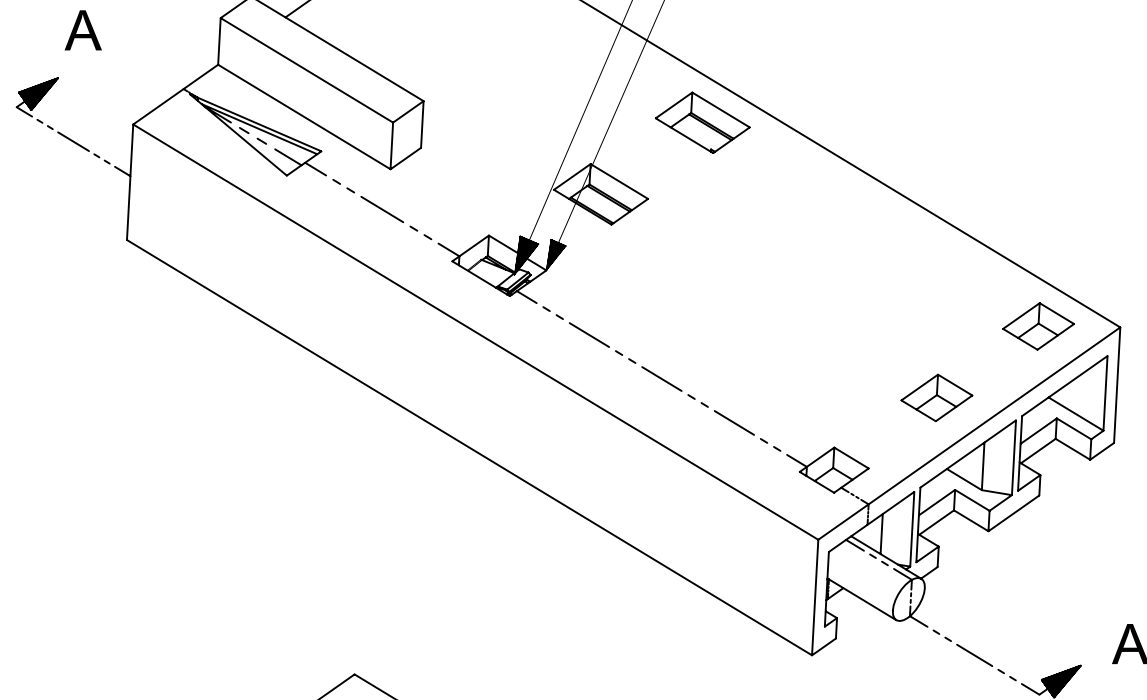
### LOOSE PACKED



### REEL PACKED



WHEN TERMINALS ARE FULLY INSERTED INTO THE HOUSINGS. THE TERMINAL'S LOCKING TANG SHOULD BE VISABLE IN THE HOUSING'S WINDOWS



|   |        |  |         |        |                 |                          |              |  |  |
|---|--------|--|---------|--------|-----------------|--------------------------|--------------|--|--|
| THIS DRAWING CONTAINS INFORMATION THAT IS PROPRIETARY TO MOLEX ELECTRONIC TECHNOLOGIES, LLC AND SHOULD NOT BE USED WITHOUT WRITTEN PERMISSION |        |  |         |        |                 |                          |              |  |  |
| DIMENSION UNITS   | SCALE  | CURRENT REV DESC: OBSOLETE PART NUMBER AS PER PCN#508517 |         |        |                 | <b>molex</b>             |              |  |  |
| mm  | 1:15   |  |         |        |                 |                          |              |  |  |
| GENERAL TOLERANCES (UNLESS SPECIFIED)   |        | EC NO: 667105  |         |        |                 | SL CRIMP TERMINAL        |              |  |  |
| ANGULAR TOL   | ± °    | DRWN: SUGEEB 2021/05/27                                  |         |        |                 |                          |              |  |  |
| 4 PLACES  | ±      | CHK'D: GGA 2021/06/29                                    |         |        |                 | PRODUCT CUSTOMER DRAWING |              |  |  |
| 3 PLACES  | ±      | APPR: GGA 2021/06/29                                     |         |        |                 |                          |              |  |  |
| 2 PLACES  | ± 0.15 | INITIAL REVISION:  |         |        |                 | DOCUMENT NUMBER          |              |  |  |
| 1 PLACE   | ± 0.25 | DRWN: KSAMIEC 2017/05/03                                 |         |        |                 | 700580000-SD             |              |  |  |
| 0 PLACES  | ± 0.0  | APPR: FSMITH 2017/06/16                                  |         |        |                 | PSD 000 B2               |              |  |  |
| DRAFT WHERE APPLICABLE MUST REMAIN WITHIN DIMENSIONS  |        | THIRD ANGLE PROJECTION                                   | DRAWING | SERIES | MATERIAL NUMBER | CUSTOMER                 | SHEET NUMBER |  |  |
|   |        |  | B-SIZE  | 70058  | SEE TABLE       | GENERAL MARKET           | 4 OF 4       |  |  |